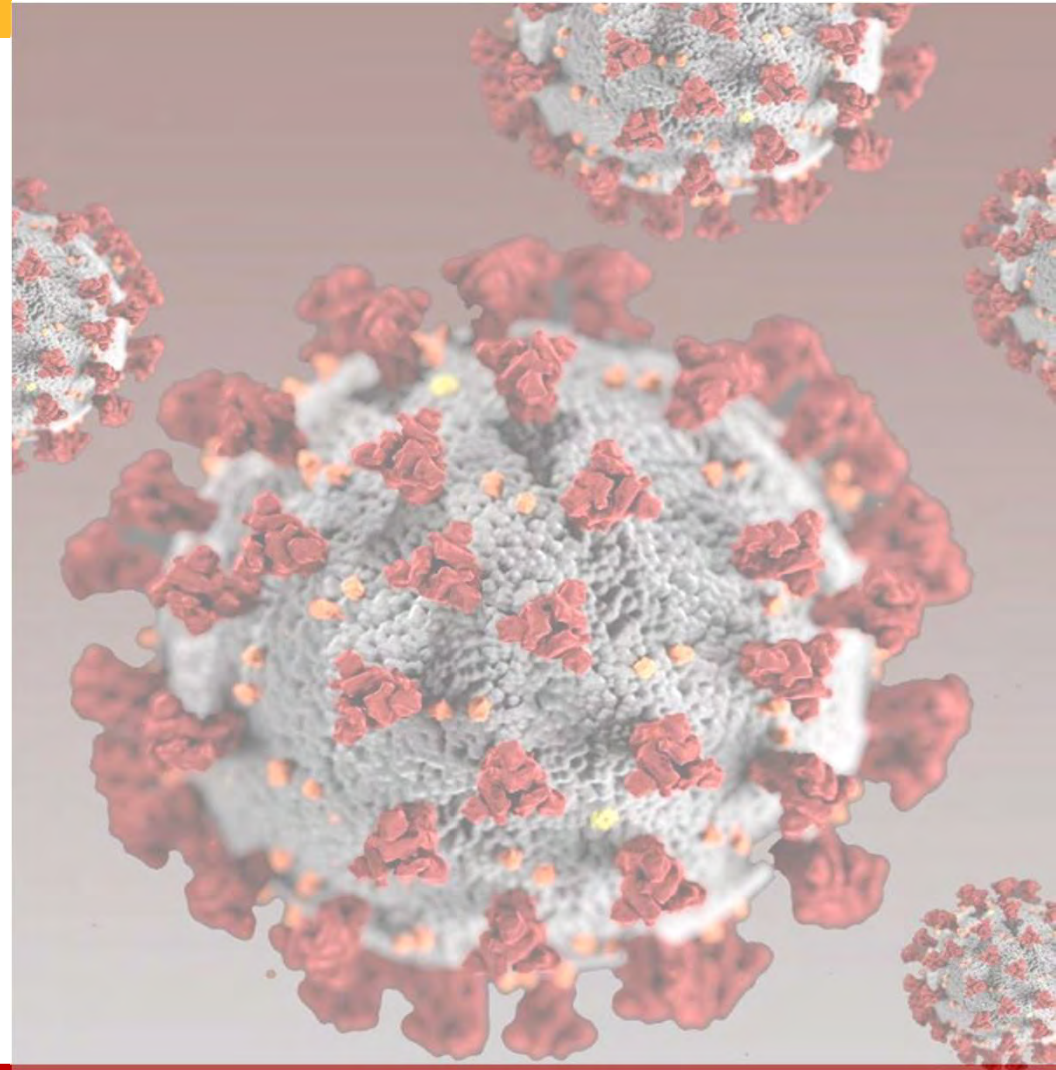


Alameda County COVID-19 Community Advisory Group

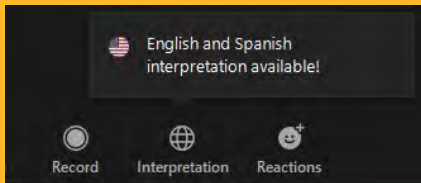
COVAX@acgov.org

Meeting 32
February 7, 2023



ALAMEDA COUNTY HEALTH CARE SERVICES AGENCY
PUBLIC HEALTH DEPARTMENT

INTERPRETATION



La siguiente presentación tiene servicio de interpretación al español.

Para iniciar esta función:

1. Haga clic en el icono de Interpretación
2. Seleccione español como idioma

Opcional: Para escuchar solo el audio en español, haga clic sobre “Mute Original Audio”

Live interpretation services are available in Spanish.



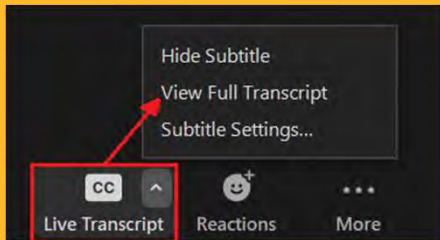
Android & PC

● ● ● iPhone & Mac



ALAMEDA COUNTY HEALTH CARE SERVICES AGENCY
PUBLIC HEALTH DEPARTMENT

INTERPRETATION



Using Closed Captioning

- Click Closed Caption in the controls at the top or bottom of your screen
- After selecting “Closed Caption,” you will see the captioning at the bottom of your screen
- If you need to adjust the caption size
- Click on the arrow next to “stop/start video” and choose “Video Settings”
- Click on “Accessibility”
- Move the slider to adjust the caption size

Como Usar los Subtítulos

- Haga click sobre Closed Caption en los controles arriba en su pantalla
- Después de seleccionar “Closed Caption”, vera los subtítulos al pie de su pantalla
- Si necesita ajustar el tamaño de los subtítulos
- Haga click sobre la flecha cerca de “stop/start video” y elija “Video Settings”
 - Haga click en “Accessibility”
 - Mueva el deslizador para ajustar el tamaño de los subtítulos

AGENDA

1. **Welcome**
2. **Partner Updates**
3. **County Updates**
4. **Medi-Cal Redetermination-*Social Services Agency***
5. **Close Out**

Please mute your
microphone when not
speaking.

Please ask your questions
in the chat.

2. Partner Updates



3. County Updates



COVID Data & COVID Policies

Dr. Nick Moss



Epidemic Data Key Points

- Daily reported COVID-19 case rate now flat after 2-month decline
- 95 hospitalized, 8 ICU
- Wastewater signal is mixed
- Alameda County in CDC "Low" COVID-19 Community Level
- Flu and RSV situations improved
- Conditions are substantially better than in prior two winters

BLPH00

Visit the COVID-19 [dashboard](#) for more data

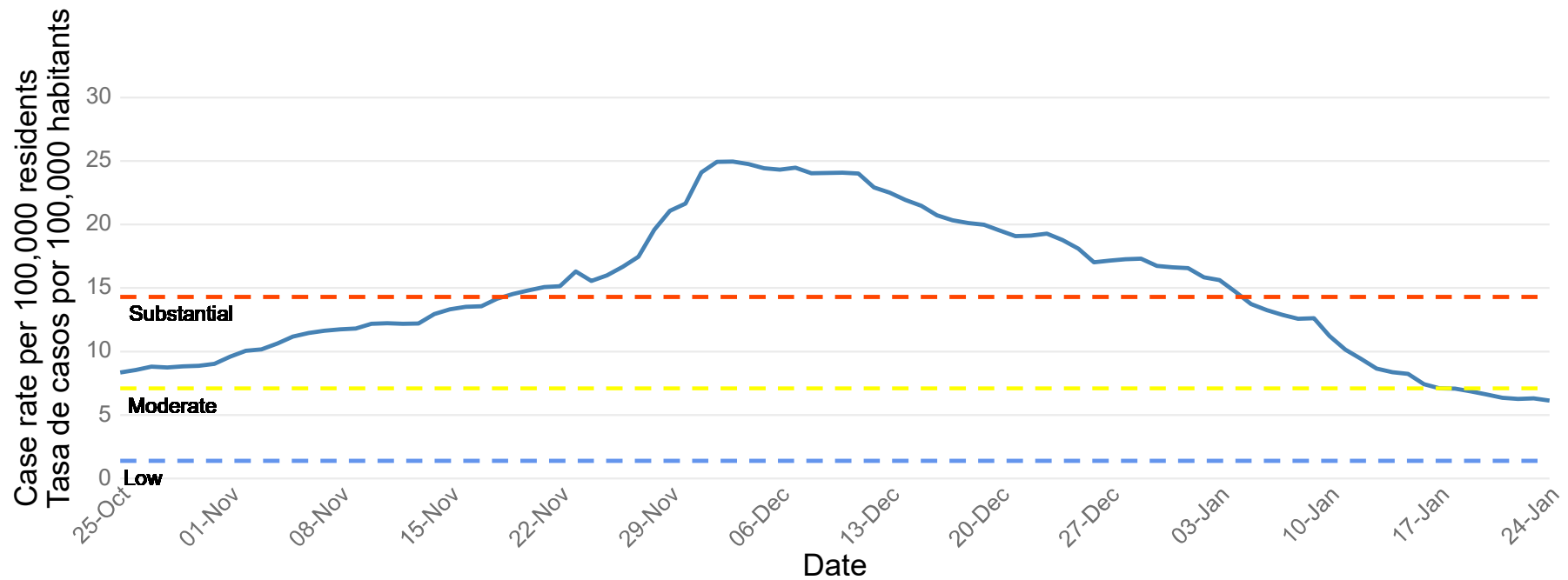
Slide 8

BLPH00 Lower than what?

Baranco, Lauren, Public Health,, 2023-02-07T19:37:33.277

Alameda County COVID-19 Daily Case Rate

Tasa diaria de casos de COVID-19 del Condado de Alameda

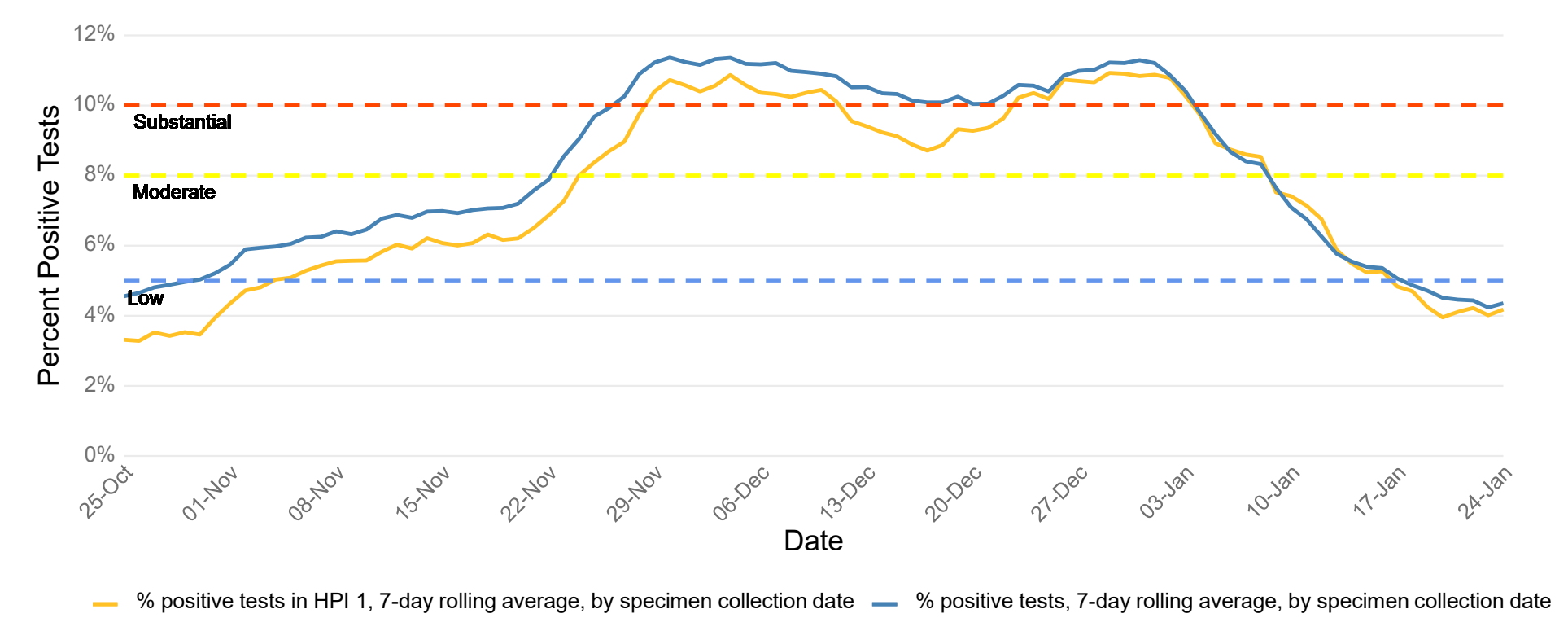


New cases per 100,000 per day, 7-day average, by episode date
— Casos nuevos por 100,000 por día, promedio de 7 días, por fecha de episodio

1 of Berkeley

Source: CalREDIE Data Distribution Portal download February 1, 2023

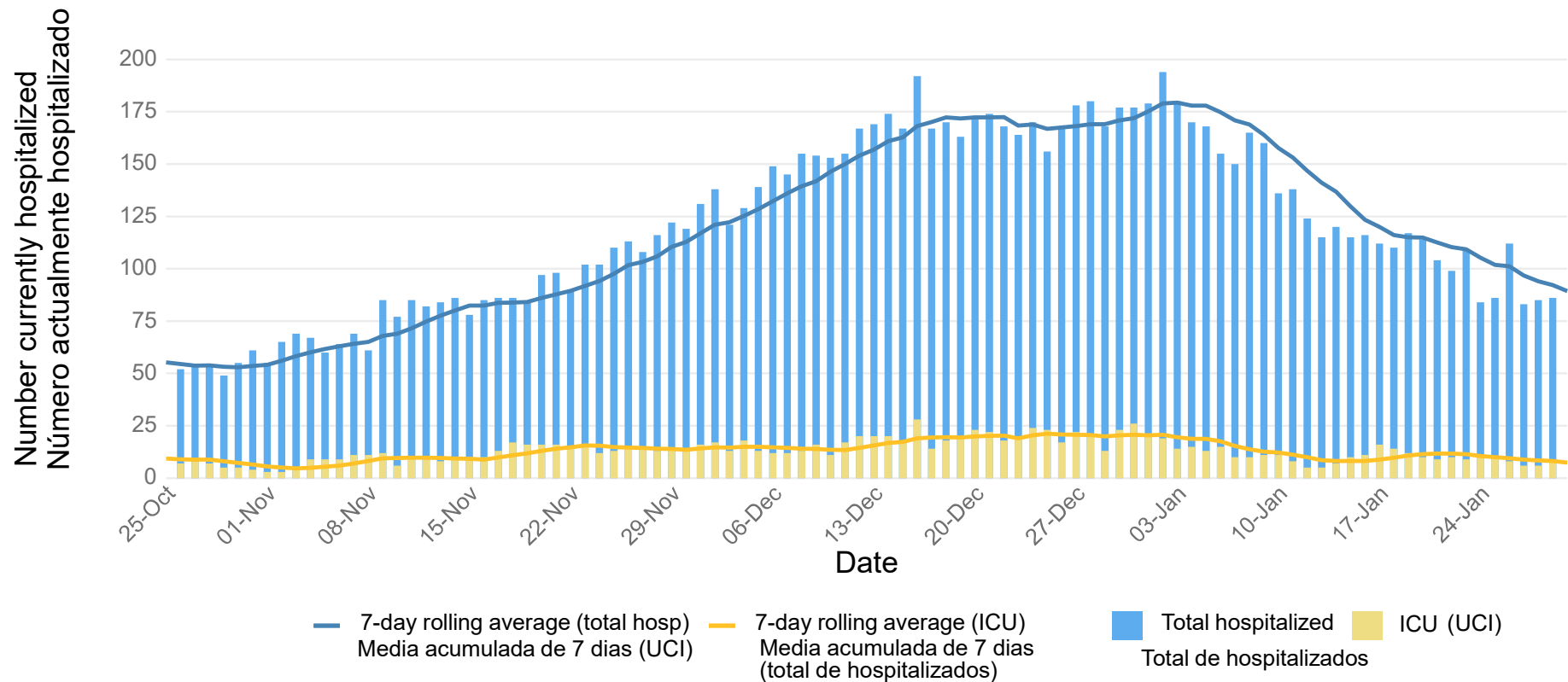
Alameda County COVID-19 Test Positivity



Includes City of Berkeley
Source: CalREDIE Data Distribution Portal download February 1, 2023

Patients with COVID-19 Currently Hospitalized in Alameda County

Pacientes con COVID-19 actualmente hospitalizados en el Condado de Alameda

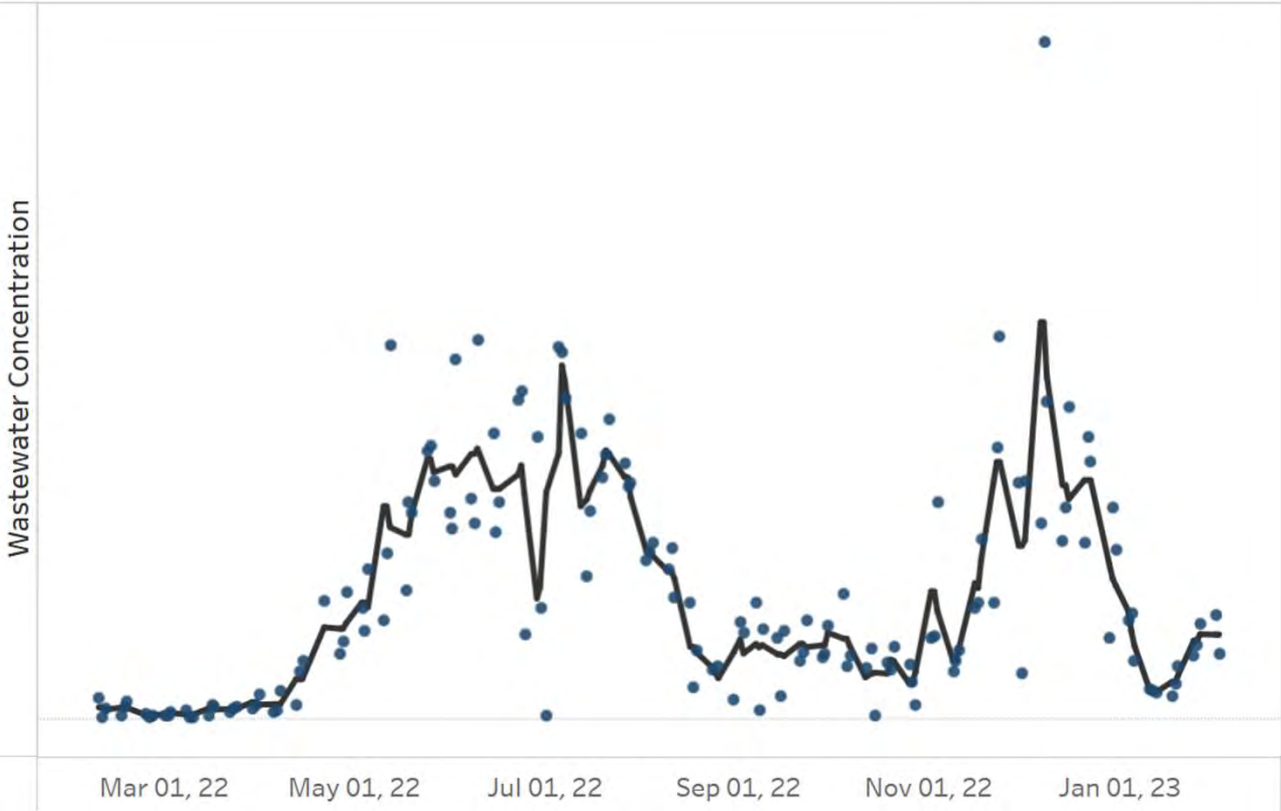


Source: California Department of Public Health

Wastewater Monitoring to 2/1 – East Bay Municipal Utilities District

Concentration Unit: SARS-CoV-2/L
Data Source: CDPH Drinking Water and Radiation Lab

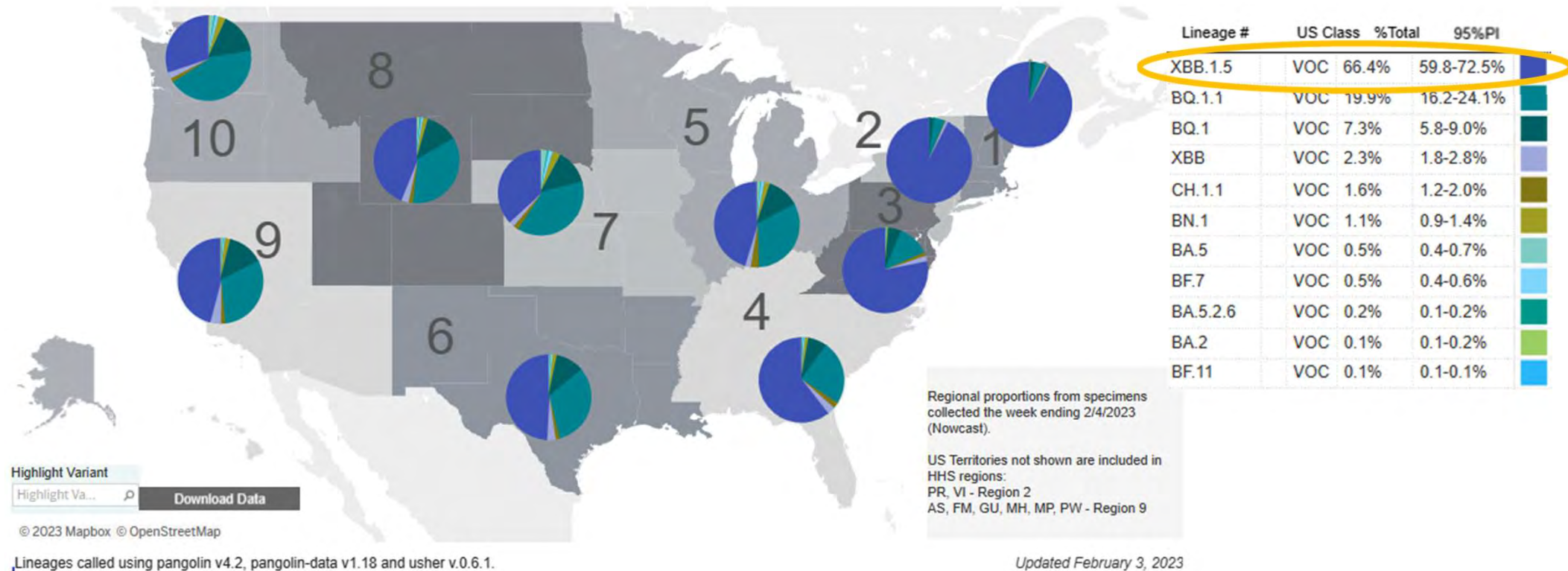
Change Sample Date
Dec 16, 20 Feb 01, 23



[Cal-SuWers Network Dashboard](#) accessed 02/6/23

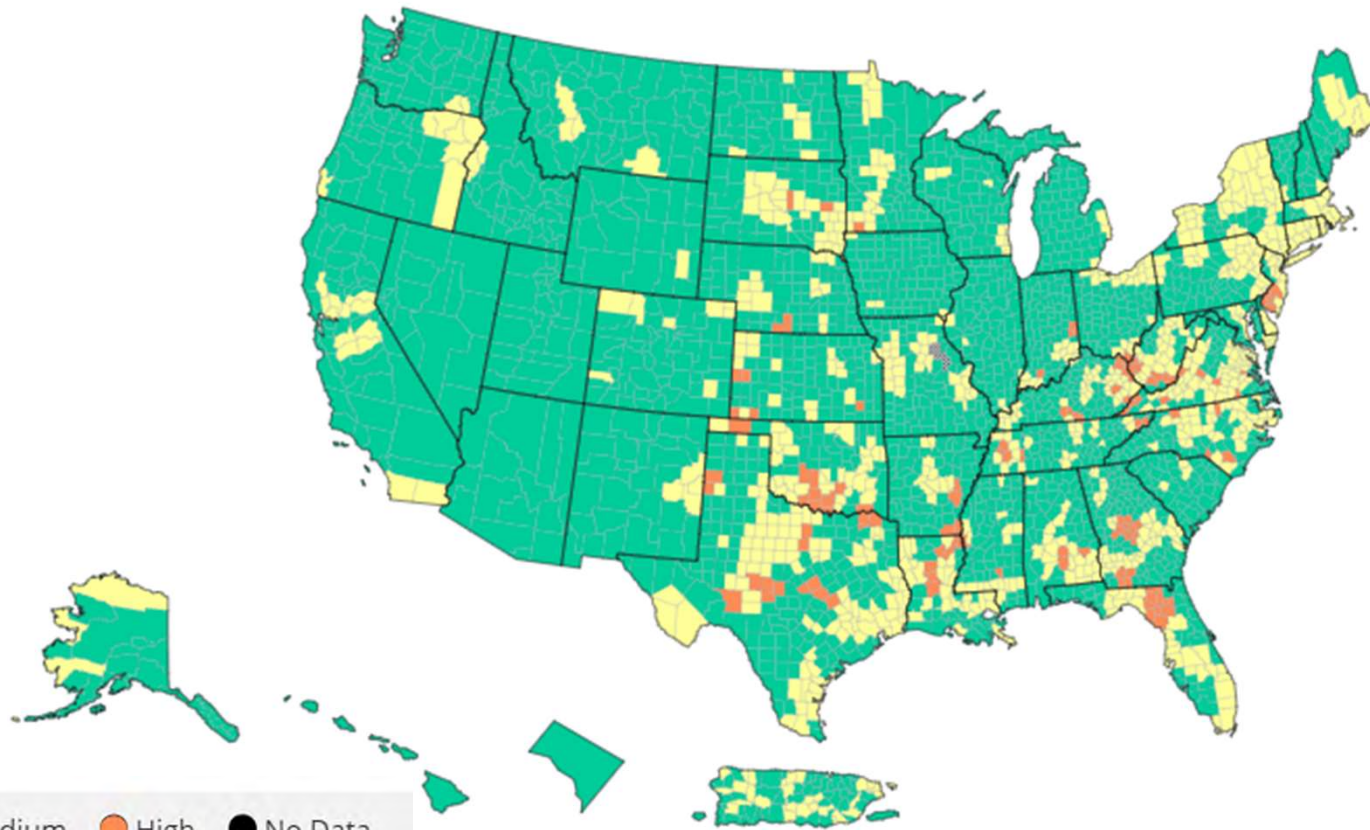


COVID-19 Variant Distribution Nowcast, 1/29-2/4, 2023



[CDC COVID Data Tracker: Variant Proportions](#) Accessed 2/1/23

CDC COVID-19 Community Levels in US by County, 2/2/23



[CDC COVID Data Tracker: County View](#) 02/3/23



ALAMEDA COUNTY HEALTH CARE SERVICES AGENCY
PUBLIC HEALTH DEPARTMENT

Changes to Health Orders

Level of Government	Date of Change	Change	What Remains
Federal	March 31, 2023	<ul style="list-style-type: none"> Medicaid continuous coverage requirement ends 	
	May 11, 2023	<ul style="list-style-type: none"> Disaster Declaration & Public Health Emergency end Medicaid COVID uninsured program ends 	<ul style="list-style-type: none"> FDA Emergency Use Authorizations end date TBD (not May 11) Free vaccine until supply runs out Cost of testing may rise
State	February 28, 2023	<ul style="list-style-type: none"> State of Emergency Declaration Ends Waivers end on regulations Reduce state resources & staffing 	<ul style="list-style-type: none"> Timeline for remaining State health orders (e.g., masking) is TBD Testing, vaccines and treatment covered by insurance – eventually will need to be within insurer network
Local/County	February 28, 2023	<ul style="list-style-type: none"> Aligning with State to lift local Health Emergency Order, if conditions permit End requirements for general isolation, isolation & quarantine in corrections, testing in Long-Term Care Facilities – move to recommendations 	<ul style="list-style-type: none"> Align with State & CDC for ongoing guidance Shift from response to prevention COVID-19 work integrated into ongoing Public Health programs
	60 days after local health emergency ends*	<ul style="list-style-type: none"> The Board of Supervisors eviction moratorium is set to expire 60 days after the local health emergency ends 	



What to expect going forward:

- Emergencies are ending but COVID-19 will remain part of our lives
 - Greatest risk is for older adults and those with serious health conditions
- New variants will emerge
- Our understanding of short and long-term impacts of infection will grow
- Treatments and vaccination strategies should continue to evolve
- Public health strategies may come to resemble those for influenza
- Much uncertainty remains

What can residents do about **COVID-19** and other respiratory viruses?

- Stay home when sick
- Stay up-to-date on vaccinations
- Keep gatherings smaller and outside or well-ventilated
- Wear masks for greater protection
- Test for COVID-19
- Have a plan to get treatment



COVID Division & Strategy Updates

Dr. Donata Nilsen



Optum Serve Testing Site Updates

- San Leandro Marina Community Center closed permanently 1.22.23
- Mobile testing buses shut down 2.5.23
- Optum Serve San Pablo Park, 2800 Street, Berkeley will close permanently 2.28.23



Community Testing Services Continue

- 10 Testing Vendors
- 22 Stationary Sites
- Hosting 61 Events per week including mobile events
- Rapid Testing, PCR testing and At Home Kit distribution + COVID Care information
- Co-location of services, resources with vaccination and basic needs whenever possible
- LaClinica and La Familia currently still supporting access to treatment
- Target populations: uninsured/underinsured, communities most impacted by COVID/racial/health disparities
- Testing website provides up to date test site information: <https://covid-19.acgov.org/testing>

Right Sizing Our COVID Response Work

- State ending emergency declaration February 28, 2023
- Shift from a purely response driven approach to a prevention approach
- Focus testing on un/underinsured; increase outreach, education, access to care
- Update data management strategy for long term sustainability
- Changes in Recommendations/Guidance
 - OSHA no longer requiring reporting of cases to LHJs
 - Lifting testing requirement of unvaccinated
 - Loosening restrictions on visitation
 - Lifting vaccination requirement of Health Care Personnel



Public Health COVID Services



ALAMEDA COUNTY HEALTH CARE SERVICES AGENCY
PUBLIC HEALTH DEPARTMENT

Questions about COVID-19?

Call 510 268-2101 or email ncov@acgov.org

- Reduced Ongoing Services
 - Focus on Infection Prevention & Outbreak Guidance
 - Supporting LTCFs and other vulnerable congregate settings
 - Treatment Education and Outreach will shift to provider education
 - Community Vaccinations, PopUps, In Home Vaccinations
 - Community Testing with increased Outreach and Education
- Coordination with Community Partners
- Community Support /Referrals will transition into PH Nursing
- Dashboards, Data Management streamlined based on
- Therapeutics Coordination



Alameda County
Health Care Services Agency

Behavioral Health | Environmental Health | Office of Agency Director | Public Health

4. Medi-Cal Redetermination

Juan Ventanilla, Social Services Agency



5. Close Out



THANK YOU!

COVID-19 Vaccine

covid-19.acgov.org/vaccines

(510) 208-4829

COVID-19 Testing

covid-19.acgov.org/testing

@Dare2BWell



WAYS TO STAY INFORMED



Community Advisory Group (CAG)

2nd Tues. of the month, 5:30-7:00 PM; next on 3/14/23

covid-19.acgov.org/community-advisory-group



Public Health Commission

2nd Thurs. of the month, 6:00-8:00 PM; next on 3/16/23

acphc.wordpress.com



Health Care Services Agency (HCSA)

COVID-19 Updates

Includes presentations & newsletters

covid-19.acgov.org/response



Access to COVID Therapeutics (Treatment) Acceso a la terapéutica COVID (Tratamiento)

TESTED POSITIVE? NEED TREATMENT? NO DOCTOR?
¿HA DADO POSITIVO? ¿NECESITA TRATAMIENTO? ¿NO HAY MÉDICO?

Sesame Care: 833-686-5051 | <https://sesamecare.com/covidca>

- California COVID Telemedicine Line for FREE virtual health screenings and FREE prescriptions (Paxlovid or molnupiravir) / Línea de telemedicina COVID de California para realizar exámenes de salud virtuales y prescripciones GRATUITAS (Paxlovid o molnupiravir)
- Appointments in English & Spanish, interpretation line for other languages / Citas en inglés y español, línea de interpretación para otros idiomas

HAVING TROUBLE OR HAVE OTHER QUESTIONS?
¿TIENE PROBLEMAS O TIENE OTRAS PREGUNTAS?

ACPHD COVID Community Support : 510-268-2101 | ncov@acgov.org

