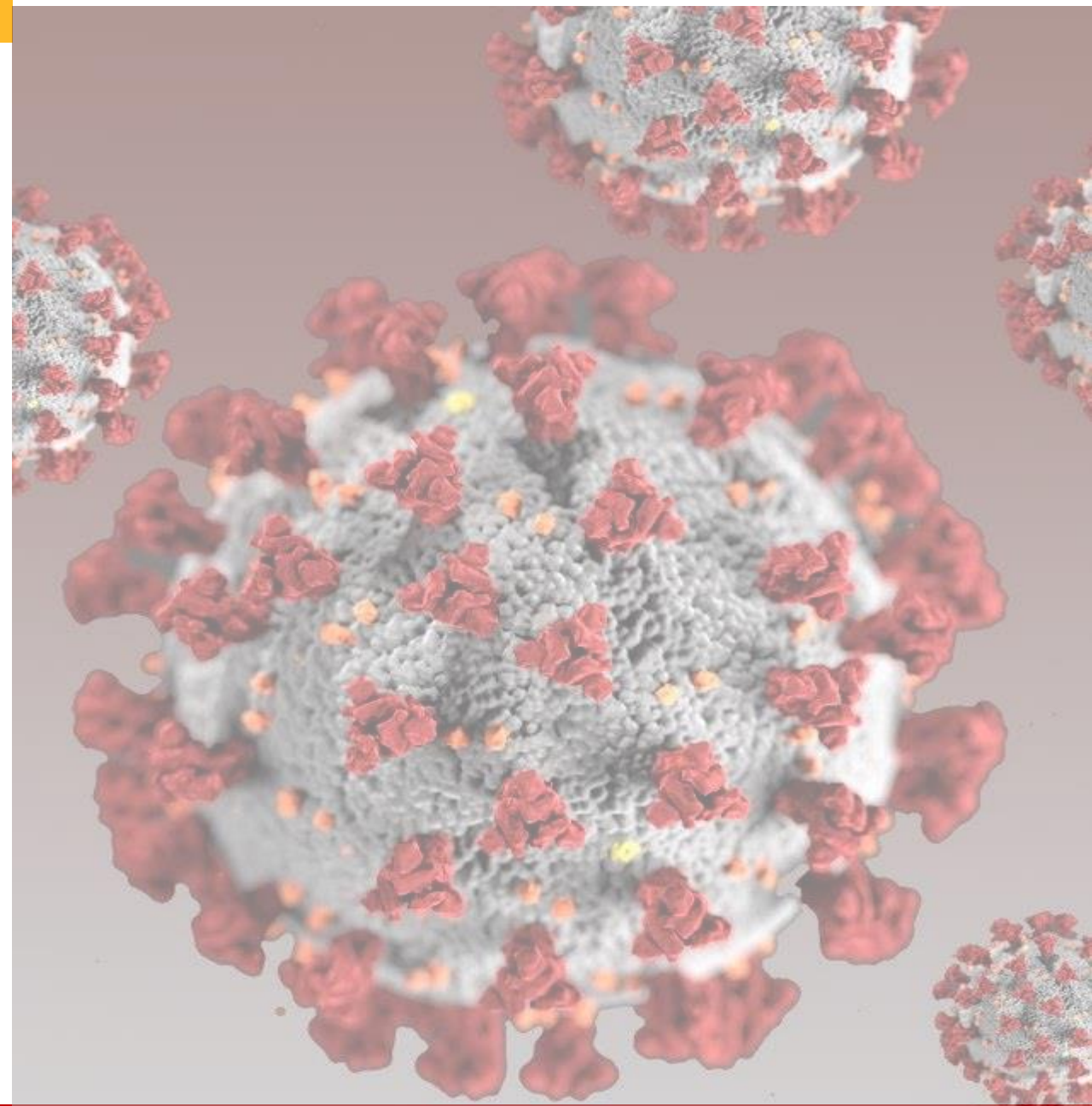


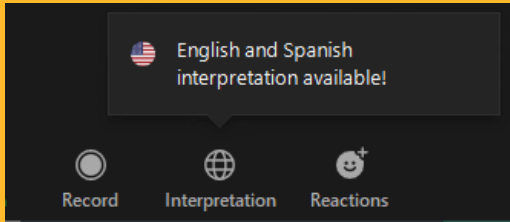
Alameda County COVID-19 Community Advisory Group

COVAX@acgov.org

Meeting 28
October 11, 2022



INTERPRETATION



La siguiente presentación tiene servicio de interpretación al español.

Para iniciar esta función:

1. Haga clic en el icono de Interpretación
2. Seleccione español como idioma

Opcional: Para escuchar solo el audio en español, haga clic sobre “Mute Original Audio”

Live interpretation services are available in Spanish.

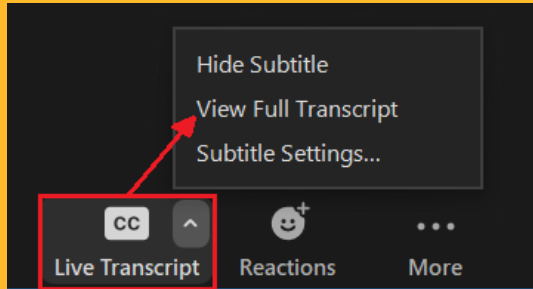


Android & PC

● ● ● iPhone & Mac



INTERPRETATION



Using Closed Captioning

- Click Closed Caption in the controls at the top or bottom of your screen
- After selecting “Closed Caption,” you will see the captioning at the bottom of your screen
- If you need to adjust the caption size
- Click on the arrow next to “stop/start video” and choose “Video Settings”
- Click on “Accessibility”
- Move the slider to adjust the caption size

Como Usar los Subtítulos

- Haga click sobre Closed Caption en los controles arriba en su pantalla
- Después de seleccionar “Closed Caption”, vera los subtítulos al pie de su pantalla
- Si necesita ajustar el tamaño de los subtítulos
- Haga click sobre la flecha cerca de “stop/start video” y elija “Video Settings”
 - Haga click en “Accessibility”
 - Mueva el deslizador para ajustar el tamaño de los subtítulos

AGENDA

1. Welcome
2. Partner Updates and Lessons from the Field
 1. Umoja Youth Mobilizers
3. County Updates
4. COVID-19 Division Updates
5. Close Out

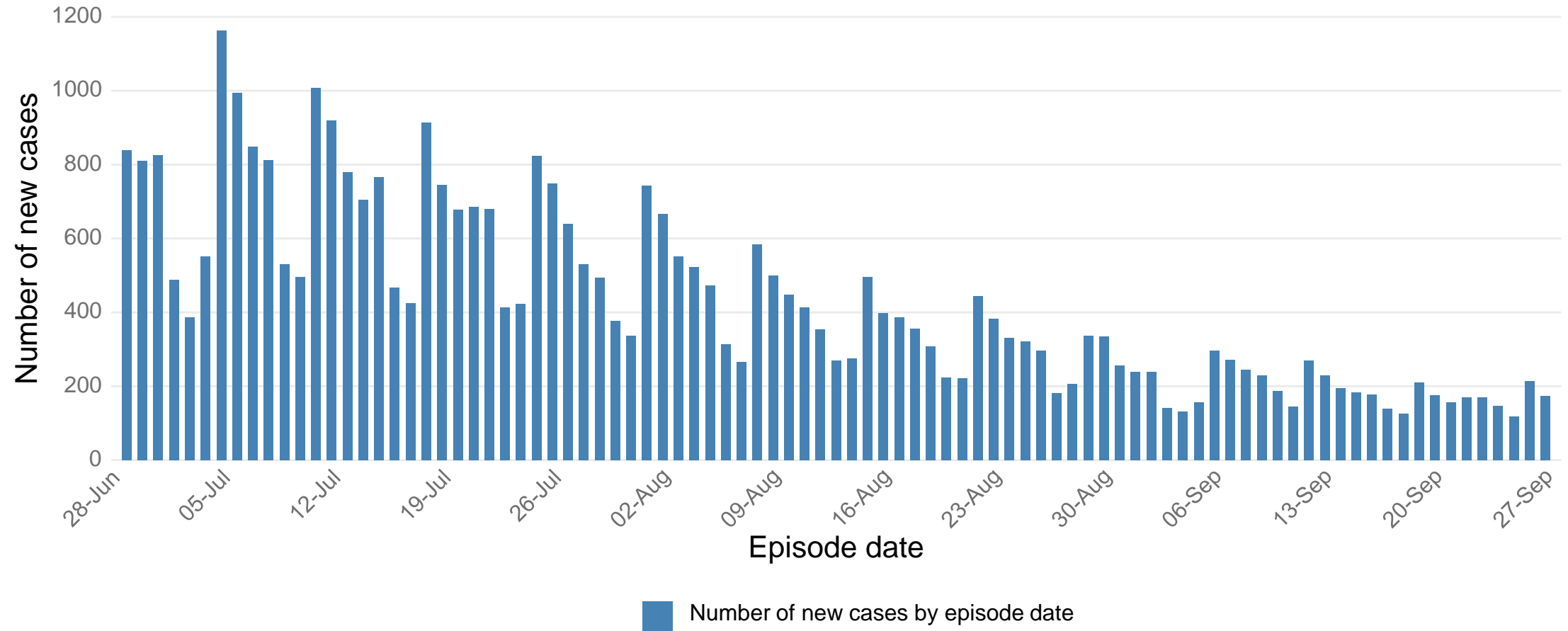
Please mute your
microphone when not
speaking.

Please ask your questions
in the chat.

2. Partner Updates & Lessons from the Field

3. County Updates

New Alameda County COVID-19 Cases by episode date

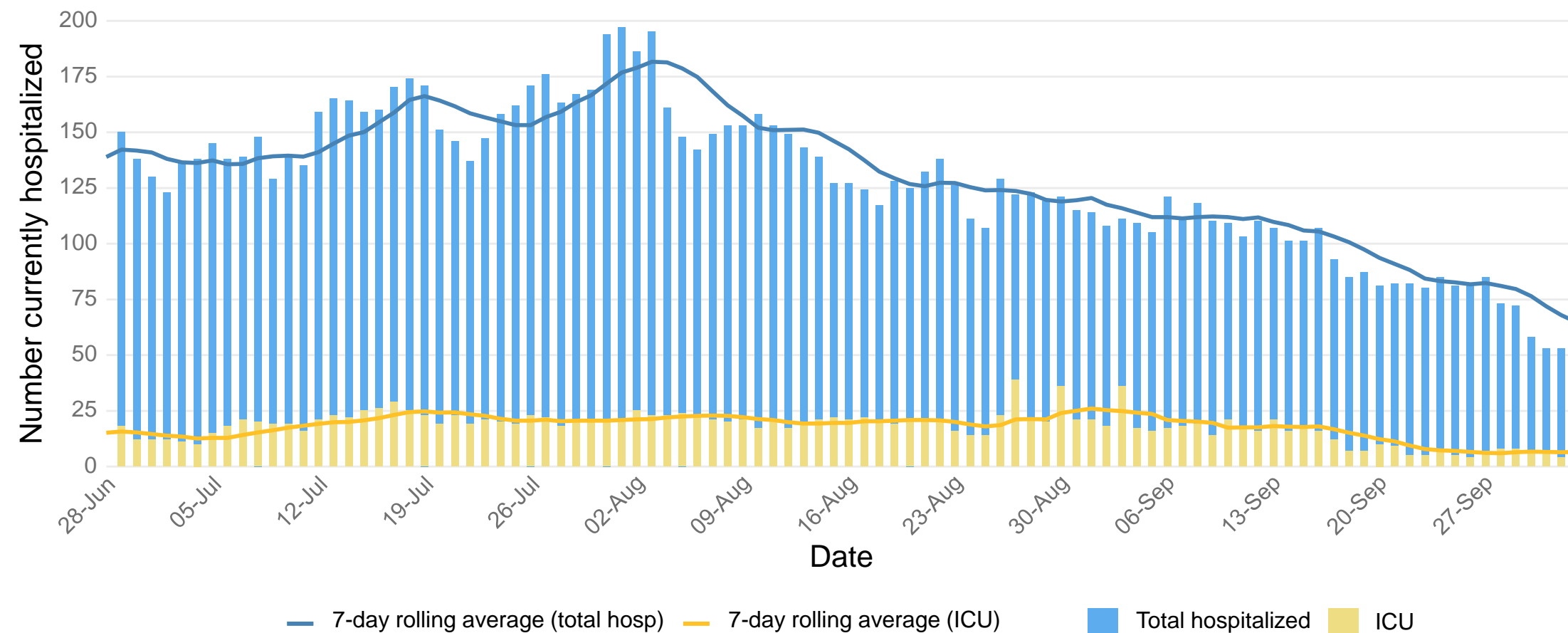


Includes City of Berkeley

Source: CalREDIE Data Distribution Portal download October 5, 2022



Patients with COVID-19 Currently Hospitalized in Alameda County



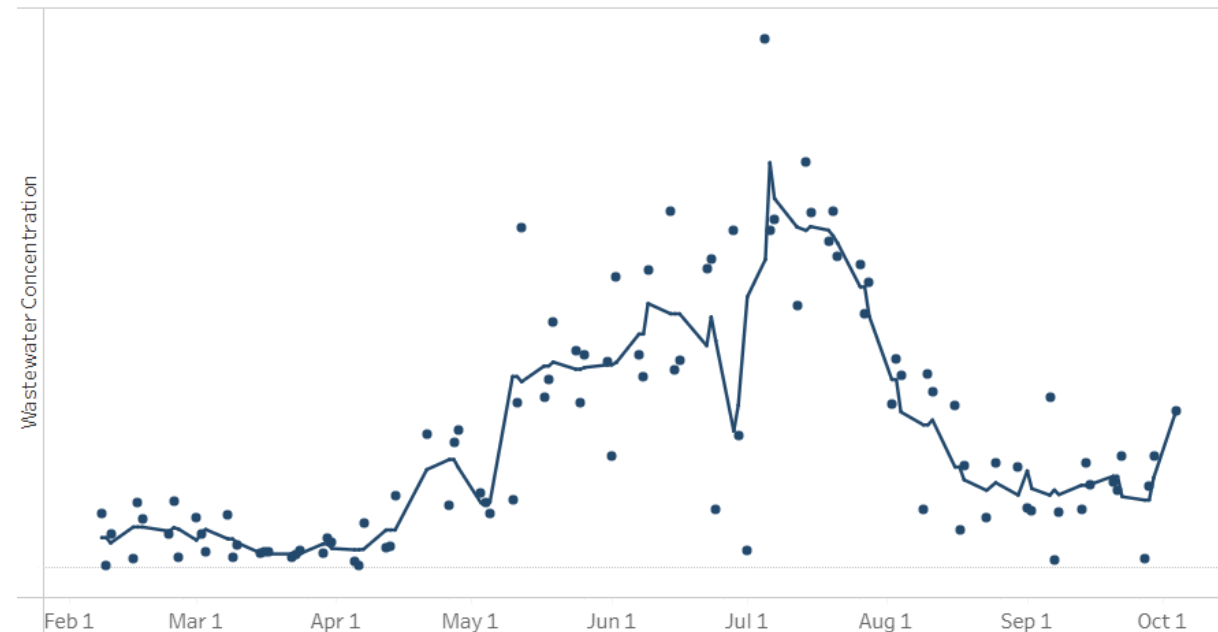
Source: California Department of Public Health

Wastewater Monitoring for Alameda County

EBMUD (CDPH) to 10/4

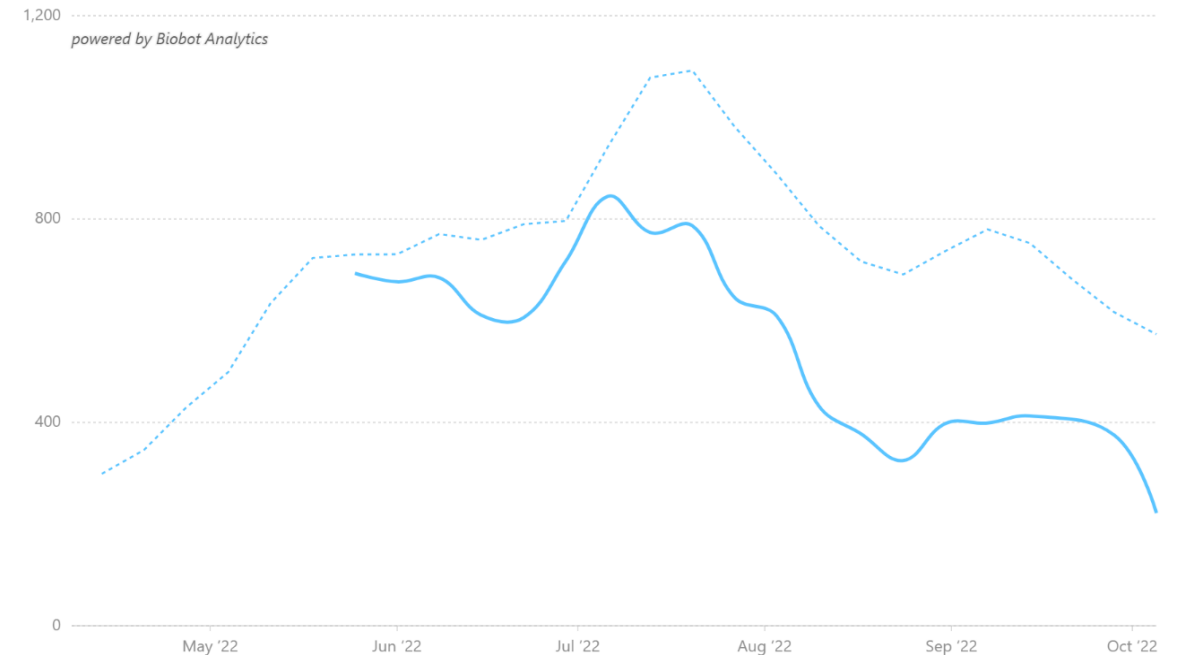
Concentration Unit: SARS-CoV-2/PMMoV

Data Source: CDPH Drinking Water and Radiation Lab



[Cal-SuWers Network Dashboard](#) accessed 10/11/22

Biobot (CDC) to 10/5

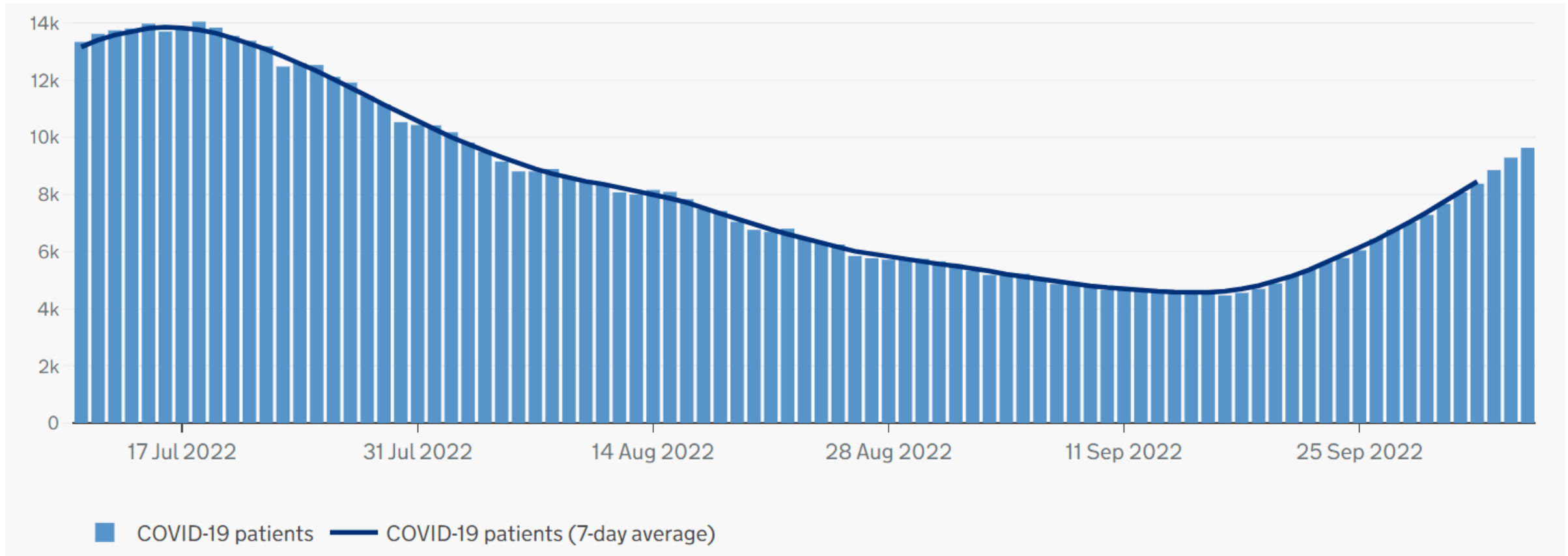


BA.5: 99.6% • BA.2*: 0.2% • BA.4: 0%

[Biobot Network of Wastewater Treatment Plants](#) accessed 10/11/22



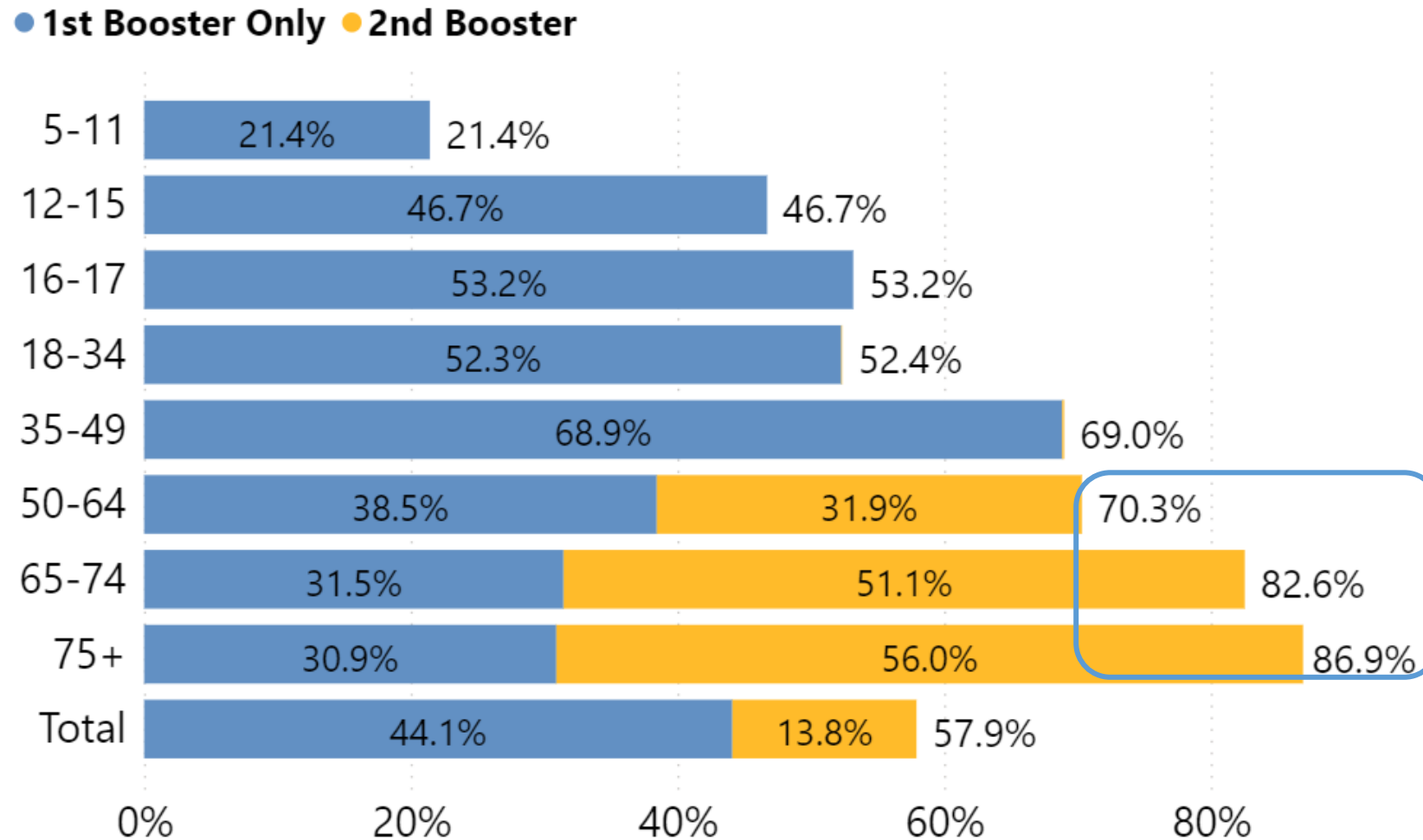
COVID-19 Hospitalizations in England, Past 3 months



[Healthcare in England | Coronavirus in the UK \(data.gov.uk\)](#) Accessed 10/11/22



COVID-19 Boosters by Age, 10/11/22

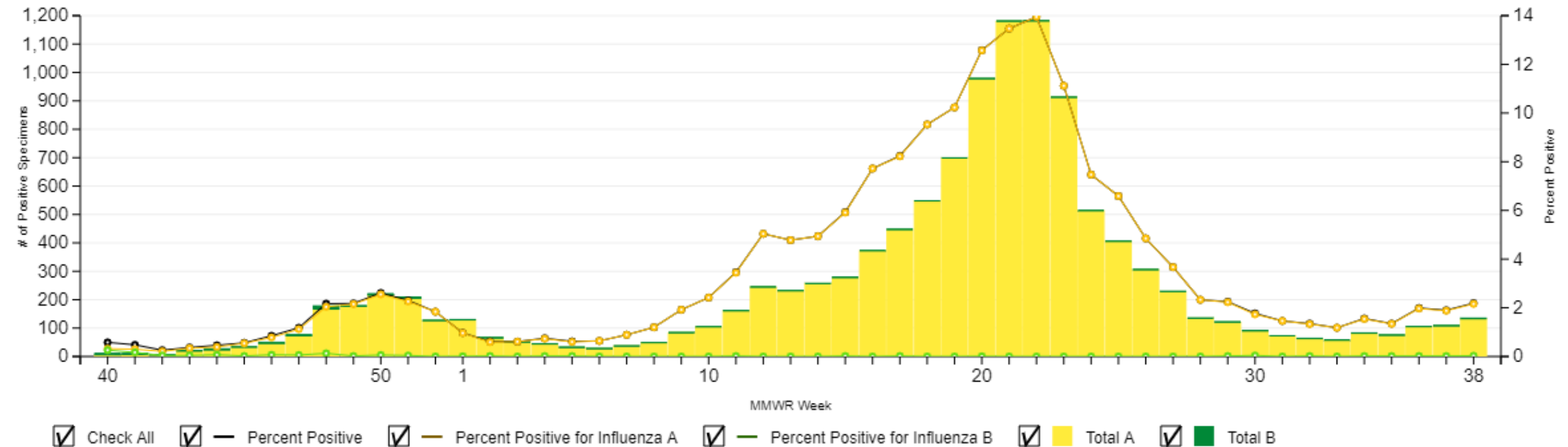


Influenza Positive Tests from CA Clinical Labs

FLUVIEW
interactive



Influenza Positive Tests Reported to CDC by Clinical Laboratories, California,
2021-22 Season, week ending Sep 24, 2022
Reported by: U.S. WHO/NREVSS Collaborating Laboratories and ILINet



State Mask Policy Updates Effective 9/23

- Recommendations now tied to [CDC COVID-19 Community Levels](#)*
 - Everyone recommended to mask indoors at High Community Levels
 - Vulnerable people recommended to mask at Medium and High Community Levels
- High-risk congregate setting changes:
 - At Low Community Levels, masking optional in shelters and correctional settings
 - Alameda County-operated facilities still subject to mask requirement for all County buildings
 - Masking required in Medium or High Community Levels, outbreaks and clinical areas
- Masks remain required by State in health care and long-term care facilities
- Masks remain recommended as part of exposure and isolation guidance

*CDC Community Levels based on case rates and hospital burden.

<https://covid-19.acgov.org/face-masks> update in process

California COVID-19 Supplemental Paid Sick Leave

- Provides 80 hours of paid COVID-19 related sick leave
 - Up 40 hours for isolation, quarantines, vaccination, or child's school closure
 - Remaining 40 hours for COVID-19 illness only
- For employees unable to work or telework
- Can be applied to care for qualified family member
- Only applies to employers with 26 or more employees
- Started 1/1/22 and now extended through 12/31/22
- More details: [2022 SPSL FAQs \(ca.gov\)](#)

Current COVID-19 States of Emergency

- Federal
 - National Emergency
 - Public Health Emergency
 - Has implications for Medicaid enrollment
 - Declaration by HHS Secretary to allow FDA EUAs
 - PREP Act Emergency Declaration by HHS Secretary
 - Liability immunity for COVID-19 medical countermeasures
- State Declaration of Emergency
- Local Emergency (Sheriff)
- Local Health Emergency (Health Officer)

Considerations for lifting local health emergency

- Status of state and federal emergency declarations
- Ongoing pandemic conditions
 - Deaths, emerging variants, severe disease, treatment access, booster uptake
- Impact of message on ongoing response efforts
- No pre-specified metrics
 - COVID-19 metrics improve dramatically between waves
 - Emerging variants complicate assessments of risk
 - Need flexibility given potential for state, federal and regional changes

What is ahead?

- Expect continued roll-back of local, state and federal COVID-19 policies
- Expect infections to rise again in coming months
 - Greatest risk of severe disease is in unvaccinated & unboosted older adults
 - Disparities will reflect underlying health conditions and health care access barriers
 - People in denser housing and working conditions will continue to have highest exposure risk
- Challenge: Supporting the most impacted residents through this transition



2022 MPX (Monkeypox) Outbreak Updates

Eileen Dunne

10/11/2022

Guidance and Resources:

[MPX.acgov.org](https://mpx.acgov.org)

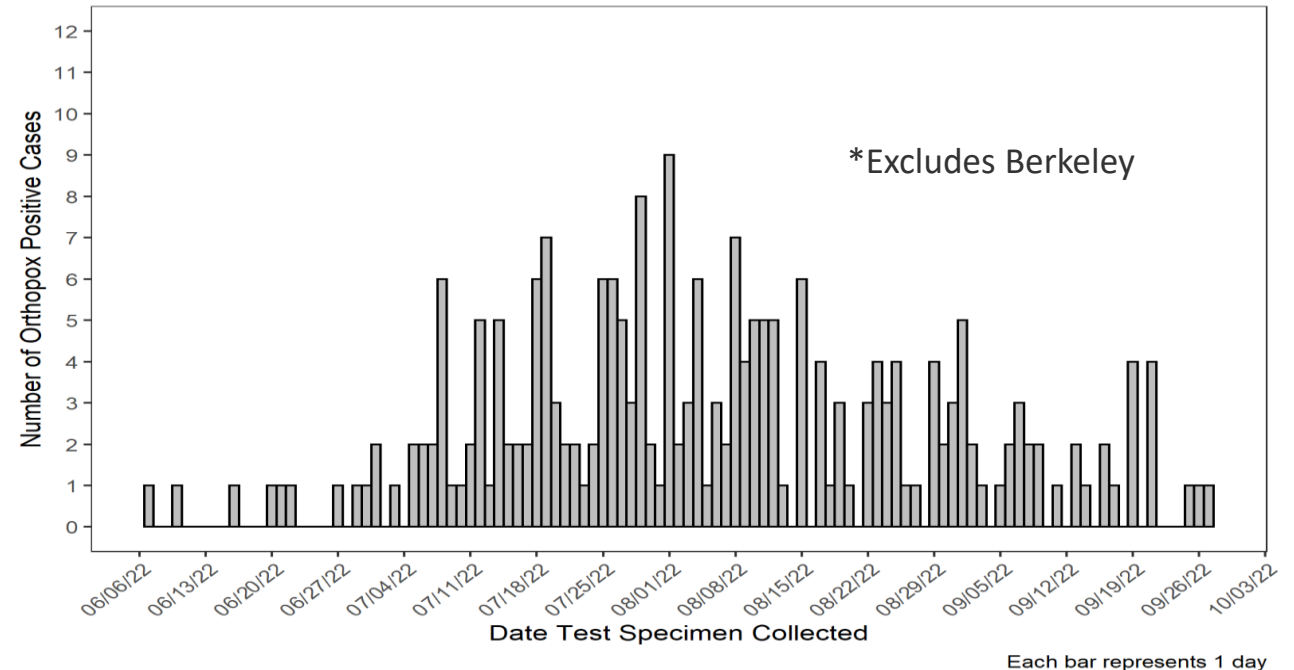
510-268-2101



Alameda County MPX Cases

- Alameda County: 233
 - Most (64%) are <40 years of age
 - Most (94%) are male
 - Most are gay or bisexual men - although anyone can get MPX after an exposure
 - 40% Hispanic/Latinx, 25% Black/African American, 21% White, 9% Asian
 - 63% of persons with MPX live in Oakland
 - 27% are people living with HIV

MPX Cases by Test Date, Alameda County



[MPX.acgov.org](https://mpx.acgov.org)



MPX Vaccine Eligibility (Updated 10/11/22)

- Gay and bisexual men and their sex partners
- Transgender people and their sex partners
- Sex workers and their sex partners
- People with multiple sex partners
- People living with HIV
- People who had sex at any sex venue
- Healthcare workers who are likely to collect laboratory specimens from persons with MPX (e.g., persons working in sexual health clinics or clinical settings that serve at risk populations)
- Laboratory workers who perform MPX testing



Alameda County MPX Vaccine Updates (10/10/22)

9,026 Alameda County residents have received the JYNNEOS vaccine

| Race/Ethnicity ▼ | Vaccinated Persons | % of Vaccinated Persons |
|---|--------------------|-------------------------|
| White | 3729 | 41.31% |
| Unknown race | 110 | 1.22% |
| Other race | 263 | 2.91% |
| Native Hawaiian or Other Pacific Islander | 40 | 0.44% |
| Multiracial | 482 | 5.34% |
| Latino | 1697 | 18.80% |
| Black or African American | 1111 | 12.31% |
| Asian | 1569 | 17.38% |
| American Indian or Alaska Native | 25 | 0.28% |
| Total | 9026 | 100.00% |



MPX priorities

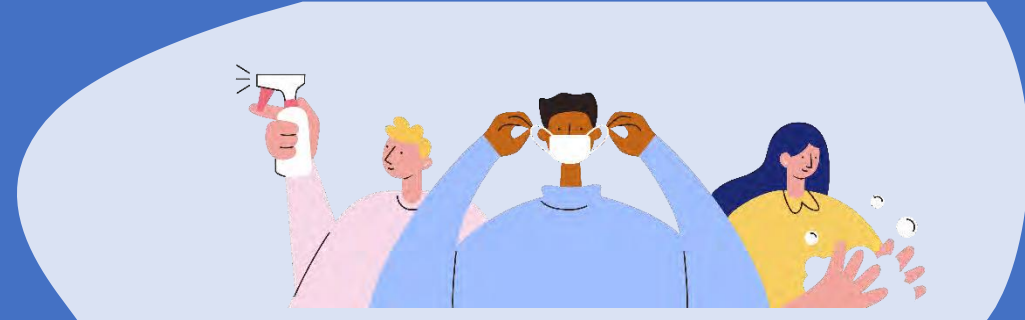
- Working with community partners to reach young gay and bisexual men of color and their sex partners to ensure knowledge and vaccine access
 - Deeper focused approaches to community engagement including outreach in clubs, bars, balls, high school LGBTQ clubs
 - Communications on importance of completing vaccine series
- Considering expanded vaccine eligibility criteria
- Continued partnership with the LGBTQ Center
- Ongoing timely identification of cases and contact tracing
- Ensuring guidance on Alameda County website is up to date
 - Countering misinformation - i.e., intradermal vaccination is less efficacious



4. COVID-19 Division Updates

2-YEAR COVID-19 STRATEGY

Strategic refresh process



Three Phases of COVID-19 Strategy Refresh

Step 1: May 2022 Review of high-level activities of the plan and get feedback from community

Step 2: June 2022 discuss masking order; identify priorities for next strategic plan using a racial equity, community-focused lens.

(July – focus on MPX)

Step 3: Aug -Sept 2022 Share community feedback with COVID Division, ACPHD and HCSA leadership to shape the strategic refresh.

October 2022 – Updated COVID-19 Strategy: Final Draft

Parts of the COVID-19 Strategy

1. Goals = Alameda County population level health outcomes for the COVID-19 response focused on:
 - Prevention
 - Disease containment
 - Health disparities
 - Public health infrastructure
2. Strategies = actions to accomplish the goals
3. Implementation Plan = largely unseen and internal to operations team

SUMMARY – CAG Input To Updated Booster Strategy

What are you hearing?

- **Safety** – are they safe? Is it safe to do both flu and updated booster?
- **Erosion of trust** – vaccines have not ended the pandemic. Why?
- **Need to learn more** of the science before we can teach others what is going on.
- **Caregivers** are really important to reach – if not over 50, a lot of questions about whether to get boosted.
- **Messaging** about protecting their families is not as impactful for younger people

How to increase uptake?

- Put forward real world **examples** to make it clear what people should do
- **Simplify the message** - Be realistic: vaccines & boosters will reduce illness, hospitalizations and death. They will not stop transmission or end the pandemic. Be real - we are all figuring this out together.
- Do targeted marketing focused on the **elderly, SSI workers** and those receiving **SSI**.

Does this reflect your ideas? Other input?

SUMMARY – CAG Input To Improve Access To Treatments

Do people know what to do when they get COVID? What concerns are you hearing?

- Treatment and treatment options not widely understood.
- Providers not up to date on what is available and who is eligible.
 - People being turned away for eligibility, esp if no ‘proof’ that they are immunocompromised
 - Challenging to get to a provider within 5 days
- Paxlovid – side effects are a deterrent (metallic taste, diarrhea)
- Latinx community – many do not know about test to treat; especially seniors and people not connected
- Confusion about isolation and quarantine rules (5 and 10 day period) Employers messaging inconsistently.
- Many without insurance are deterred from seeking vaccine

SUMMARY – CAG Input To Improve Access To Treatments

How to increase awareness and uptake of therapeutics?

- A good decision-tree about what to do when exposed.
- “Arm” people with information so they can talk to their providers. (Patient advocacy script)
- Raise awareness and availability of treatments among community providers
- Need delivery options for people with limited technology access

Does this reflect your ideas? Other input?

Alameda County Health Care Services Agency
Public Health Department



**2-YEAR
COVID-19 STRATEGIC PLAN**
2022 - 2024 Strategic Refresh

COVID-19 2022-2024, Two-Year Strategic Refresh

Table of Contents

| | |
|--|----|
| Mission | 4 |
| I. Introduction | 4 |
| II. Background | 5 |
| III. Looking Ahead: Factors to Track | 7 |
| Vaccinations for Youth | 7 |
| Vaccine Uptake | 7 |
| Global Vaccine Supply | 7 |
| Waning Immunity | 8 |
| Variants of Concern | 8 |
| Decreased Public Tolerance for COVID-19 Restrictions | 8 |
| Communication Strategies | 9 |
| Future Surges | 9 |
| IV. COVID-19 Recovery and Beyond | 9 |
| V. Strategy | 10 |
| Goal 1: Prevent COVID-19 infection, transmission, and serious illness | 12 |
| Strategy 1.1 Vaccinate Alameda County residents and work with the health system to maintain optimal vaccination of residents | 12 |
| Strategy 1.2 Provide guidance and technical support to individuals, organizations, businesses and congregate settings on how to minimize risk, exposure and transmission | 12 |
| Strategy 1.3 Support adoption of policies and procedures that prevent infection and serious illness | 13 |
| Strategy 1.4 Communicate effectively through multiple means to inform and educate providers and residents, with an increased focus on serving populations disproportionately impacted by COVID | 13 |
| Strategy 1.5 Protect populations disproportionately impacted by COVID | 15 |
| Strategy 1.6 Support community-informed and community-led health promotion efforts | 15 |
| Strategy 1.7 Align prevention, health promotion, and education initiatives with testing and vaccination work | 16 |
| Strategy 1.8: Provide or connect people to resources as needed | 16 |
| Goal 2: Test, isolate, and support care of people with COVID-19 | 16 |
| Strategy 2.1: Expand partnership with health system to maintain access to testing for all | 17 |

| | |
|--|----|
| Strategy 2.2: Investigate cases and outbreaks as needed | 18 |
| Strategy 2.3: Isolate people who test positive for COVID and follow current guidelines for quarantine of contacts | 18 |
| Strategy 2.4 Ensure equitable and ethical access to medication and therapies | 18 |
| Strategy 2.5: Link Alameda residents who test positive for COVID to housing resources and provide housing to those with no other options | 19 |
| Goal 3: Address COVID-19-related and other health conditions racial/ethnic health disparities | 19 |
| Strategy 3.1 Track epidemiologic trends by race/ethnicity, SES, gender, sexual orientation, zip code and age | 19 |
| Strategy 3.2 Target COVID-19-related services to communities shouldering disproportionate disease burden | 19 |
| Strategy 3.3: Identify and address root causes to disparities in COVID-19 and other health conditions | 20 |
| Strategy 3.4: Support and advocate for funding to community-based organizations led by and serving people shouldering disproportionate disease burden | 20 |
| Strategy 3.5: Ensure that all services are accessible, of high quality, culturally competent and linguistically appropriate | 20 |
| Goal 4: Strengthen, align, and evaluate public health infrastructure | 21 |
| Strategy 4.1: Building on the lessons learned from COVID, strengthen the capacity of people, technologies and systems to address current and future issues that impact the public's health | 21 |
| Strategy 4.2 Modernize and expand surveillance (behavioral and epidemiologic) and laboratory services | 22 |
| Strategy 4.3 Expand program evaluation and community research capacities | 22 |
| Strategy 4.4 Continue to use data to drive decisions | 22 |
| Strategy 4.5 Meaningfully engage communities most impacted by COVID-19 | 22 |
| Strategy 4.6: Support and advocate for funding to maintain community-based emergency response partnerships | 23 |
| Strategy 4.7 Support and institutionalize the department's Disaster Service Worker Corps | 23 |
| Strategy 4.8 Expand quality improvement and assurance initiatives within the Public Health Department | 23 |
| Strategy 4.9 Ensure language access and culturally reliable services across the agency | 23 |



COVID Transition – Discontinuing:

- Universal Case Investigations
- Contact Tracing
- CBO CICT Contracts
- Mass Vaccinations
- Stationary POD Sites
- Siloed Outbreak Management
- Manual Case Migration to CalConnect

Strategy Refresh – Focus Moving Forward

Equity

- ✓ Focus on disparate impact of long COVID & chronic conditions

Outreach & Education

- ✓ Support Community resilience coalitions and single organizations outreach and education to reach unvaccinated and uninsured
- ✓ Increase community support team to link residents to resources
- ✓ Treatment, Education and Outreach (TEO) – reach out to cases >50 yrs in priority zip codes

Outbreak Investigations

- ✓ Focus on Complex cases, Treatment calls
- ✓ Increase Infection Prevention, technical assistance with outbreak management
- ✓ Cross-train all teams for rapid response capability across settings

Strategy Refresh – Focus Moving Forward

Vaccines

- ✓ In-home and “pop-up” Points of Dispensing (PODs), in partnership with community resilience coalitions and organizations
- ✓ **Focus:** Boosters, information on other health issues, including MPX
- ✓ **Support:** Pediatric providers to vaccinate 0 - 4-year-old group
- ✓ Work with health system to increase vaccination/booster coverage

Testing & Treatment

- ✓ Link residents directly to treatment at testing sites
- ✓ Build internal capacity for testing inside of DCDCP
- ✓ Provide test kits and masks to CBOs
- ✓ Link un/underinsured residents with tele-health resources
- ✓ Work with health system to increase access

THANK YOU!

COVID-19 Vaccine

covid-19.acgov.org/vaccines

(510) 208-4829

COVID-19 Testing

covid-19.acgov.org/testing

@Dare2BWell



WAYS TO STAY INFORMED



Community Advisory Group (CAG)

2nd Tues. of the month, 5:30-7:00 PM; next on 11/8

covid-19.acgov.org/community-advisory-group



Public Health Commission

2nd Thurs. of the month, 6:00-8:00 PM; next on 11/10

acphc.wordpress.com



Health Care Services Agency (HCSA)

COVID-19 Updates

Includes presentations & newsletters

covid-19.acgov.org/response



COVID-19 Treatment

- Medication is available for people with COVID at high risk* of severe illness
 - Paxlovid, Remdesivir, Molnupravir, Bebtelivomab
- Low-barrier treatment options in Alameda County:
 - CDPH Optum Serve mobile test sites (Paxlovid)
 - COVID Division treatment call center in planning
 - COVID Division working with local testing providers to offer treatment (LFCS, WOHC, La Clinica, ROOTS)
- **Test-to-treat** resources also linked at <https://covid.gov/>
 - **Test to Treat Locator**
 - **Find a testing site**
- Contact your medical provider first if possible
- COVID Division Call Center in progress to connect COVID positive individuals to treatment options **510.268.2101** ncov@acgov.org



* **Underlying Medical Conditions Associated with Higher Risk for Severe COVID-19: Information for Healthcare Professionals | CDC**

Monkeypox (MPX)

- A rare disease caused by the monkeypox virus
- 97% of persons have rash: usually bumps and sometimes pustules or blisters
 - Located anywhere on the body and may occur in the mouth, around the anus, or on the genitals.
 - Persons with a rash characteristic of MPX should be tested and isolate.
 - Serious illness can occur especially in people with immunocompromising conditions.
 - Treatment is available (Tecoviromat or TPOXX).
- Vaccine (JYNNEOS) is a 2-dose vaccine--it prevents illness when given before or soon after exposure
 - Recent data on the vaccine finds that there may be protection even with one dose of the vaccine.

