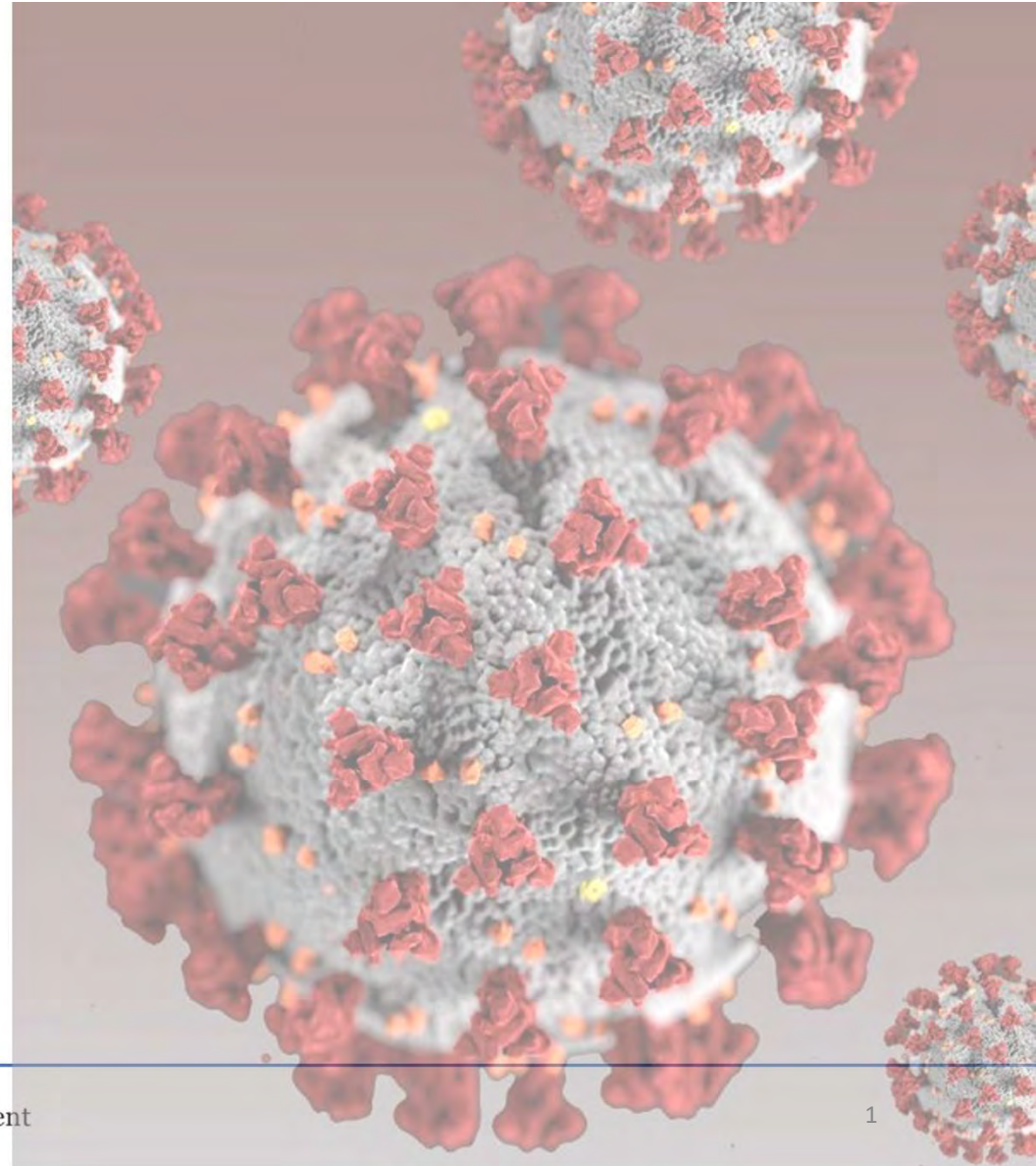


Alameda County COVID-19 Vaccine Community Advisory Group

COVAX@acgov.org

Meeting 15
September 14, 2021



La siguiente presentación tiene servicio de interpretación al Español.

Para iniciar esta función:

1. Haga clic en el icono de Interpretación, el símbolo de un globo o mundo
2. Seleccione Spanish/Español como su idioma

- Opcional: Para escuchar solo el audio en Español, haga clic sobre "Mute Original Audio"

The following presentation has interpretation in Spanish.

To start this function:

1. Click the Interpretation icon, the globe or world symbol
2. Select Spanish as your language

- Optional: To listen to only Spanish audio, click on "Mute Original Audio"



For PC and Android

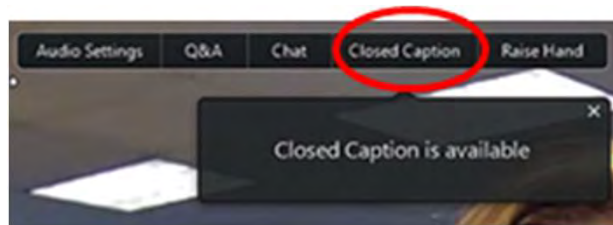
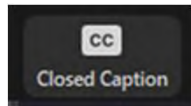
...

For iPhone and Mac



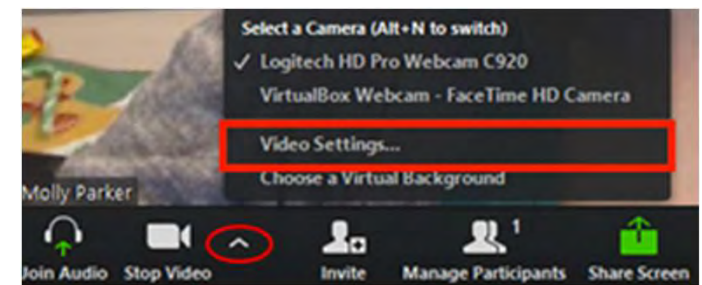
Using Closed Captioning

- Click **Closed Caption** in the controls at the top or bottom of your screen
- After selecting Closed Caption, you will see the captioning at the bottom of your screen.
- If you need to adjust the caption size
 - Click on the arrow next to stop/start video and choose Video Settings
 - Click on Accessibility
 - Move the slider to adjust the caption size



Como Usar los Subtítulos

- Haga click sobre Closed Caption en los controles arriba en su pantalla
- Después de seleccionar “Closed Caption”, vera los subtítulos al pie de su pantalla
- Si necesita ajustar el tamaño de los subtítulos
- Haga click sobre la flecha cerca de “stop/start video” y elija “Video Settings”
 - Haga click en “Accessibility”
 - Mueva el deslizador para ajustar el tamaño de los subtítulos



Agenda

1. Housekeeping & Welcome
2. Partner Updates
3. County Updates
 1. COVID Epidemic
 2. COVID Response
 3. COVID Survey Results
4. Panelist Comments/Q&A

Panelists:

Please mute your microphone
when not speaking

Everyone:

Please ask your questions
in the Q&A box

2. Partner Updates

Caniya Johnson & Saher Khan, Umoja Health Youth Mobilizers

3.1 COVID Epidemic Updates

Dr. Nick Moss



Alameda County
Health Care Services Agency



Alameda County Public Health Department
Celebrating Healthy People in Healthy Communities

Epidemic Data Key Points

- **Overall improvement**
- Daily case rate is 13.6 per 100,000
 - ~170 reported cases per day
- Test positivity is 2.6%
 - HPI first quartile: 3.2%
- Hospitalized COVID cases 171; ICU 53
- Testing above 12,000 per day
- **Case rate 3 times higher among unvaccinated** versus vaccinated persons



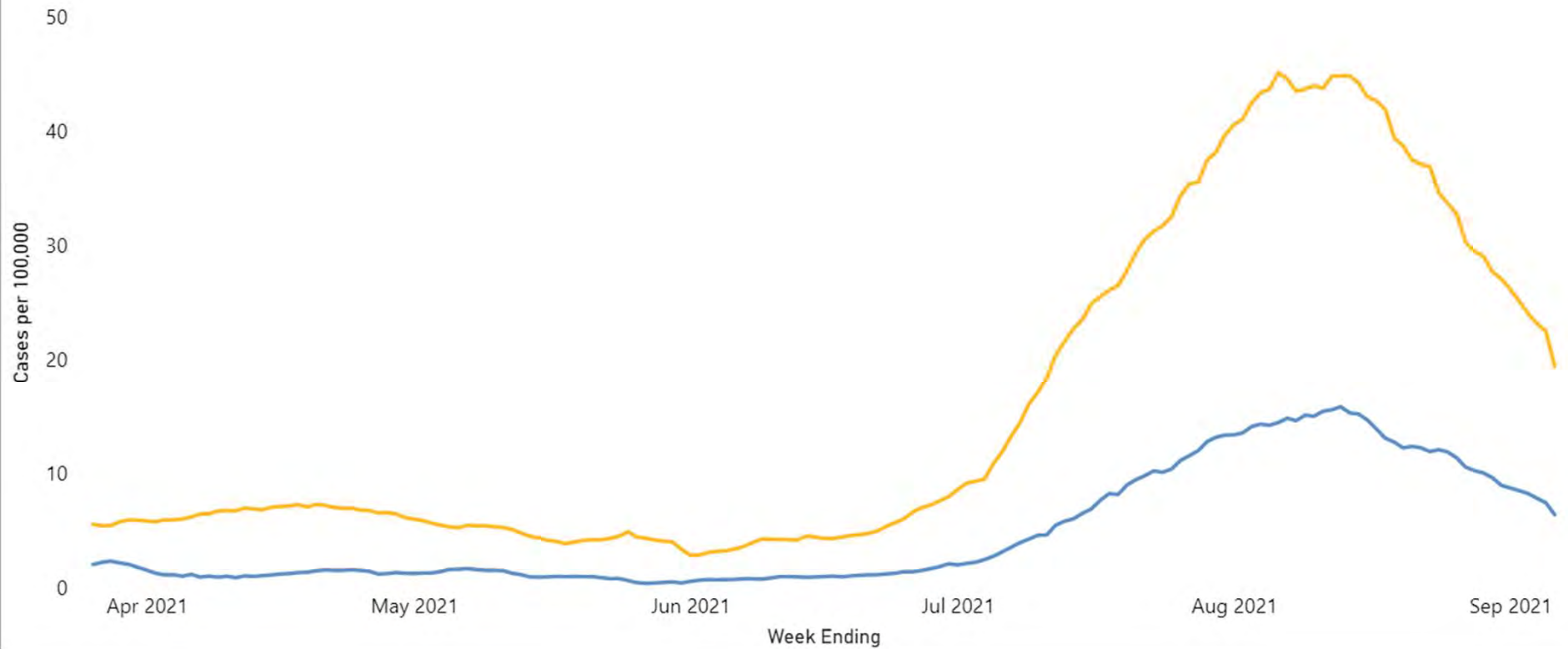


Alameda County Cases by Vaccination Status

Case Rate 7-Day Average

● 7-day Average Daily Rate among Unvaccinated Population ● 7-day Average Daily Rate among Fully Vaccinated Population

Data from last five days especially subject to change.

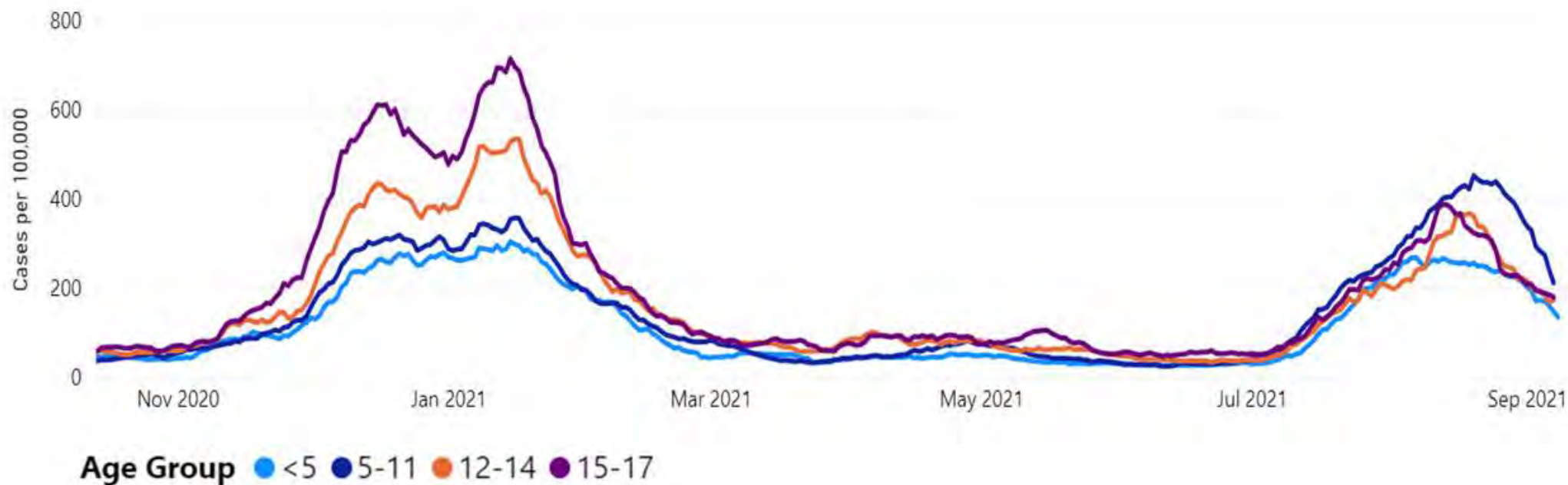


Alameda County
Health Care Services Agency



Alameda County Public Health Department
Celebrating Healthy People in Healthy Communities

Alameda County COVID-19 14-day Case Rates Among Children



Variants in California

- In California, the **Delta** variant went from **2.1%** of the cases sequenced in April to **98.6%** in August.
- Pattern in Alameda County is similar to state and US
- **> 10 total Lambda and Mu** specimens identified in Alameda County to date

**THE DELTA
VARIANT IS STRONG.
ALAMEDA COUNTY
IS STRONGER.**

GET VACCINATED



ALAMEDA COUNTY HEALTH CARE SERVICES AGENCY
PUBLIC HEALTH DEPARTMENT

510.268.2101



ALAMEDA COUNTY HEALTH CARE SERVICES AGENCY

@Dare2BWell



Alameda County
Health Care Services Agency



Alameda County Public Health Department
Celebrating Healthy People in Healthy Communities

**After Delta became the most common variant,*
fully vaccinated people had reduced risk[†] of...**

INFECTION

5X

HOSPITALIZATION

>10X

DEATH

>10X

**Vaccination offers strong
protection against COVID-19**



bit.ly/MMWR91021

* June 20-July 17, 2021

[†] Compared with people not fully vaccinated

MMWR



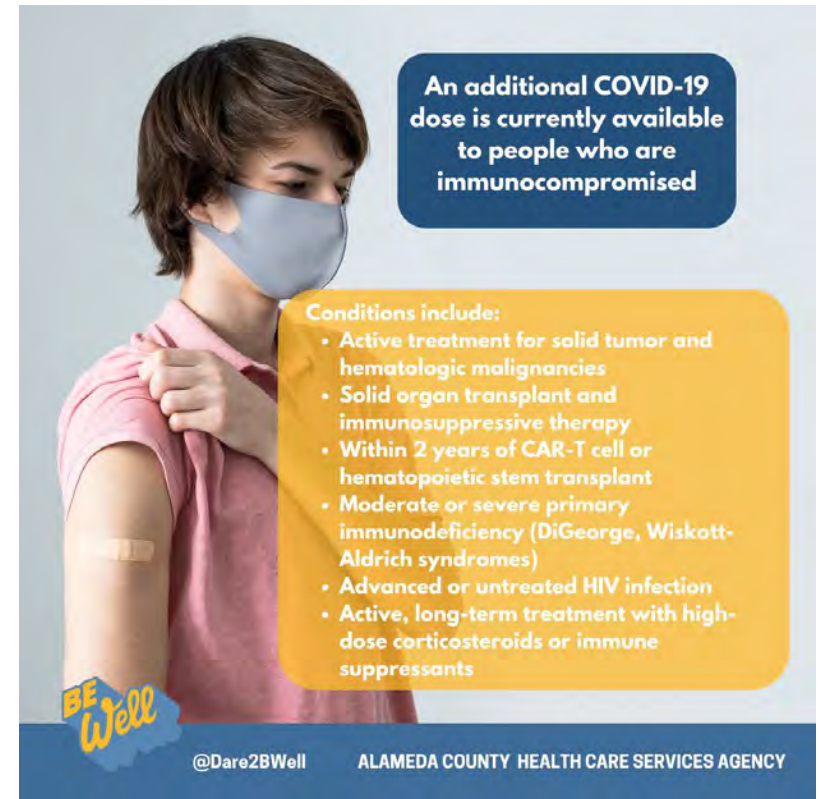
Alameda County
Health Care Services Agency



Alameda County Public Health Department
Celebrating Healthy People in Healthy Communities

Additional Vaccine Dose for Immunocompromised Persons

- CDC recommends that persons with compromised immune systems receive a 3rd dose of a mRNA COVID-19 vaccine
- May provide additional protection to this group; consult health care provider
- Alameda County-supported vaccine clinics provide additional doses
- No guidance yet for Johnson & Johnson recipients who are immunocompromised



Booster Doses

- Awaiting FDA authorization and CDC guidance, expected at end of month
- Alameda County will continue to prioritize reaching *unvaccinated* residents
- For boosters, would prioritize persons at highest risk for severe illness and exposure



3.2 COVID Response

Donata Nilsen



Alameda County
Health Care Services Agency



Alameda County Public Health Department
Celebrating Healthy People in Healthy Communities



Alameda County COVID-19 Vaccination Dashboard

% ≥ 12 Years with at Least One Dose

89.6%

See Counts

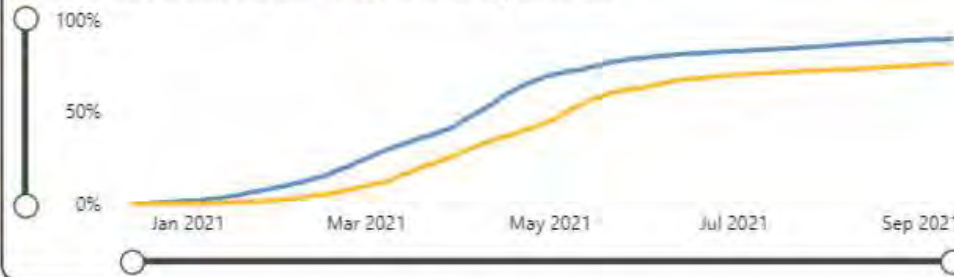
% ≥ 12 Years Fully Vaccinated

76.3%

See Percentages

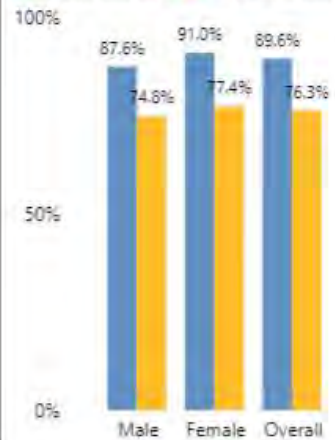
Alameda County Cumulative Percentage of Vaccine Doses

● % ≥ 12 Years At Least One Dose ● % ≥ 12 Years Fully Vaccinated



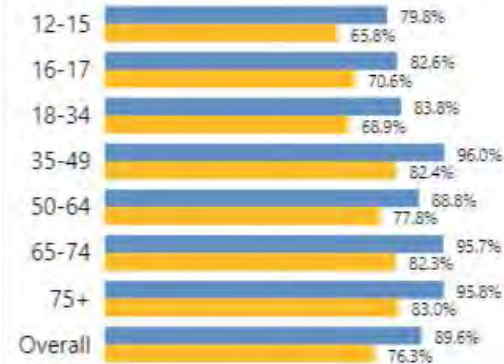
Doses by Gender (% of population ≥ 12 years)

● At Least One Dose ● Fully Vaccinated



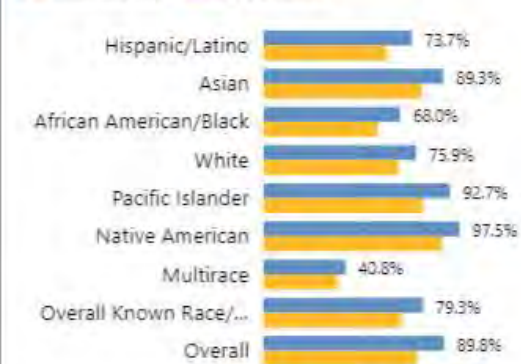
Doses by Age Group (% of population)

● At Least One Dose ● Fully Vaccinated



Doses by Race/Ethnicity (% of population ≥ 12 Years)

● At Least One Dose ● Fully Vaccinated



% of population ≥ 12 Years

| Place | At Least One Dose | Fully Vaccinated |
|---------------------|-------------------|------------------|
| Albany | 97.5% | 85.3% |
| Piedmont | 97.5% | 89.0% |
| Fremont | 95.4% | 82.1% |
| Alameda | 93.3% | 80.5% |
| Castro Valley | 93.0% | 78.3% |
| Pleasanton | 92.0% | 79.6% |
| Hayward | 90.0% | 76.7% |
| Dublin | 90.0% | 76.8% |
| Emeryville | 89.8% | 74.9% |
| Union City | 89.8% | 77.5% |
| San Leandro | 89.3% | 76.6% |
| Newark | 88.4% | 77.4% |
| Sunol | 88.1% | 77.2% |
| Oakland | 87.7% | 73.6% |
| Fairview | 86.0% | 74.2% |
| San Lorenzo | 85.9% | 74.8% |
| Berkeley | 85.2% | 72.5% |
| Cherryland | 84.2% | 69.2% |
| Livermore | 81.4% | 69.8% |
| Ashland | 80.1% | 65.7% |
| Hayward | 73.9% | 65.3% |
| Acres | | |
| Remainder of County | 70.3% | 60.7% |



Alameda County
Health Care Services Agency



Alameda County Public Health Department
Celebrating Healthy People in Healthy Communities

Source: <https://covid-19.acgov.org/data> (9/14/2021)

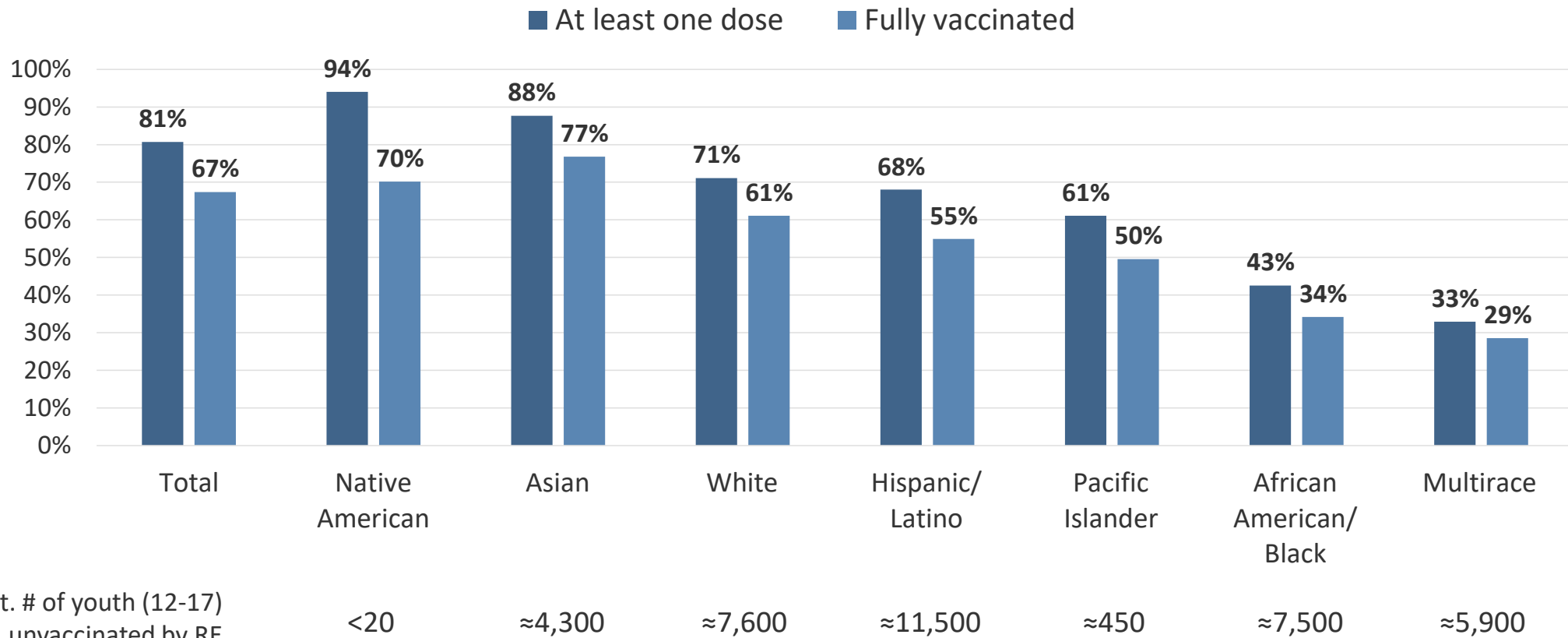
Youth (12-17) Vaccination Progress in Alameda County

Total 12-17 Population = 121,673

| | # Vaccinated | % Vaccinated | Est. # unvaccinated |
|-------------------|--------------|--------------|---------------------|
| At Least One Dose | 98,206 | 81% | 23,467 |
| Fully Vaccinated | 82,018 | 67% | |

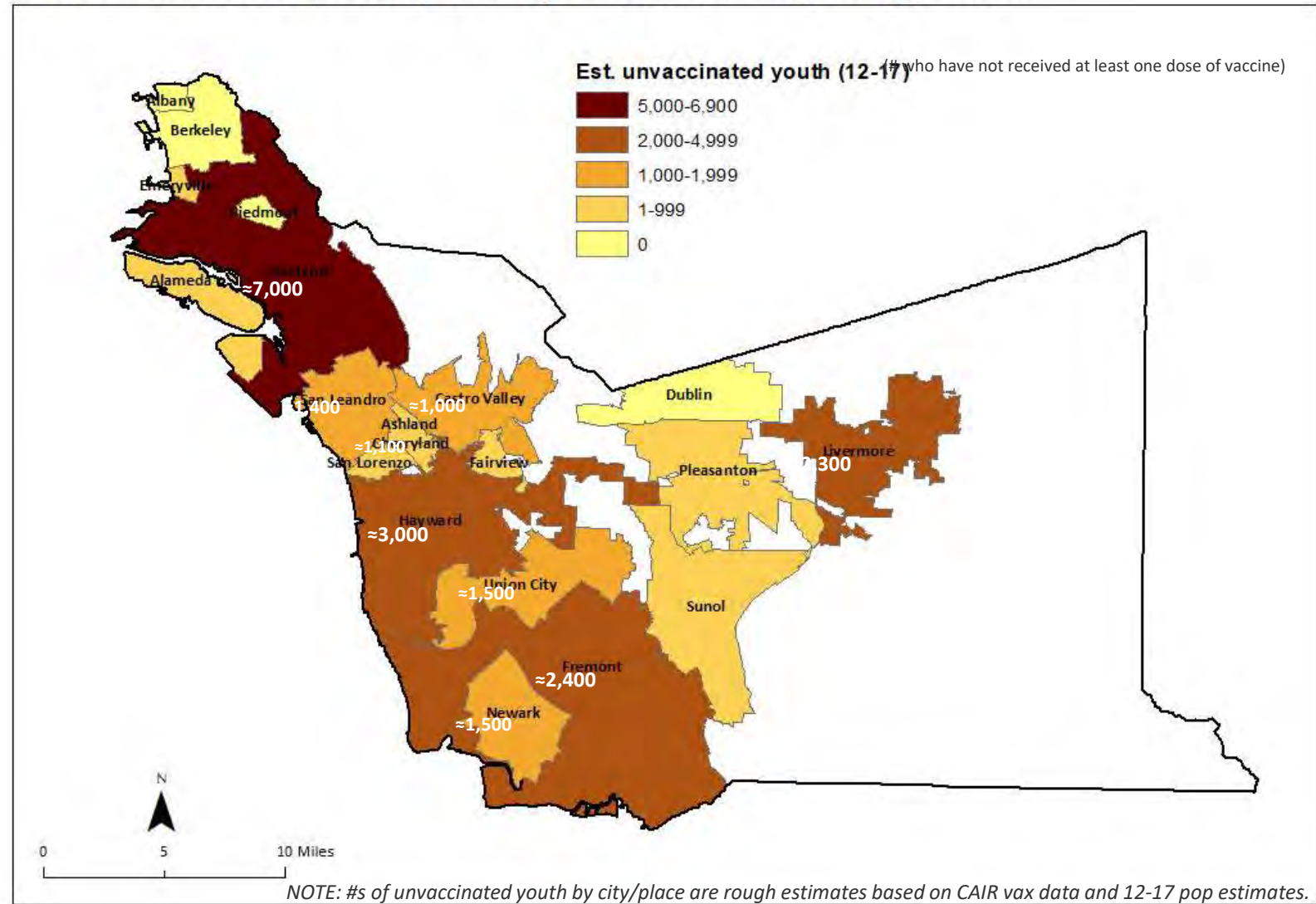


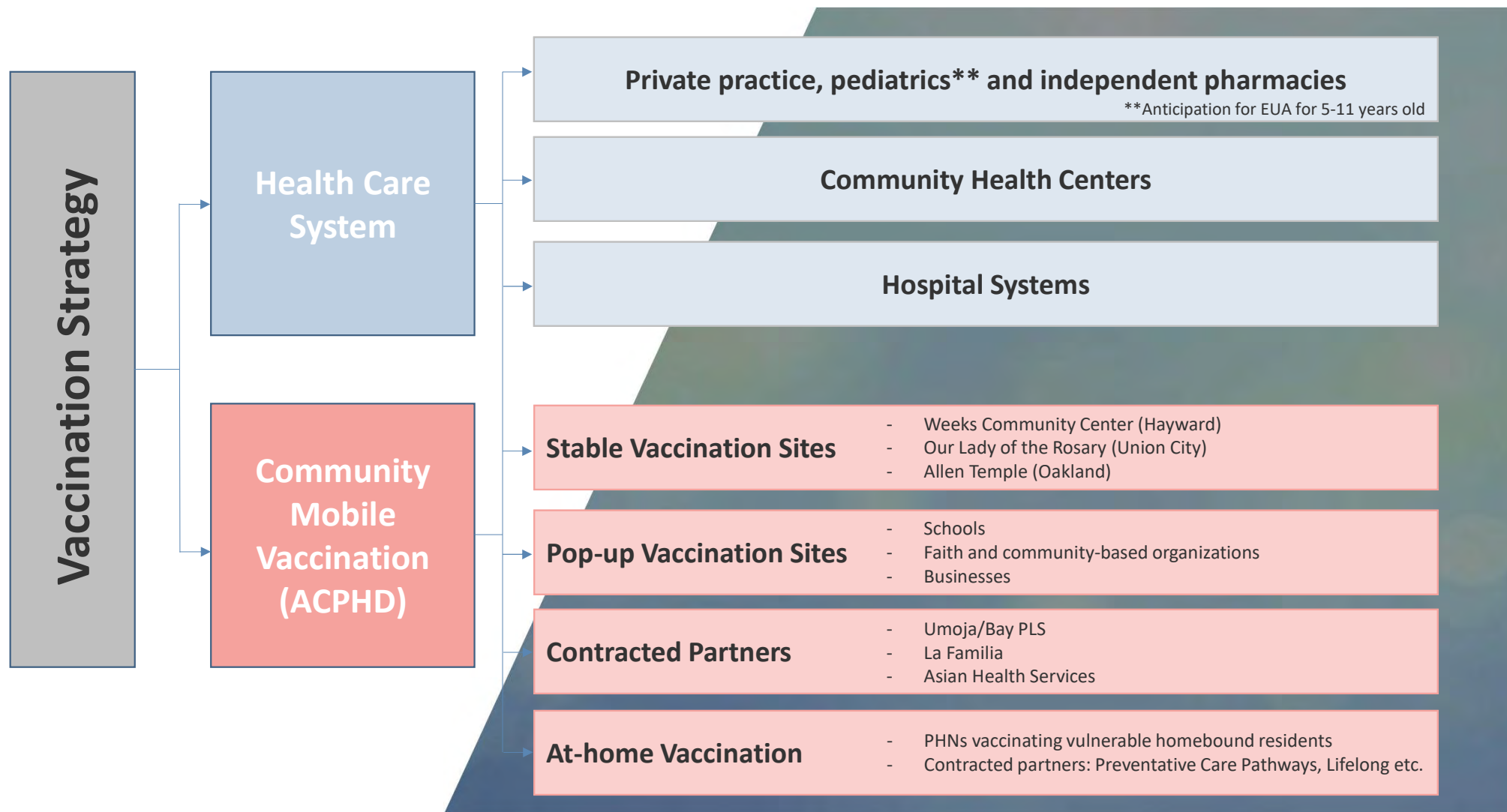
Youth (12-17) Vaccination Rates: Overall & by Race/Ethnicity



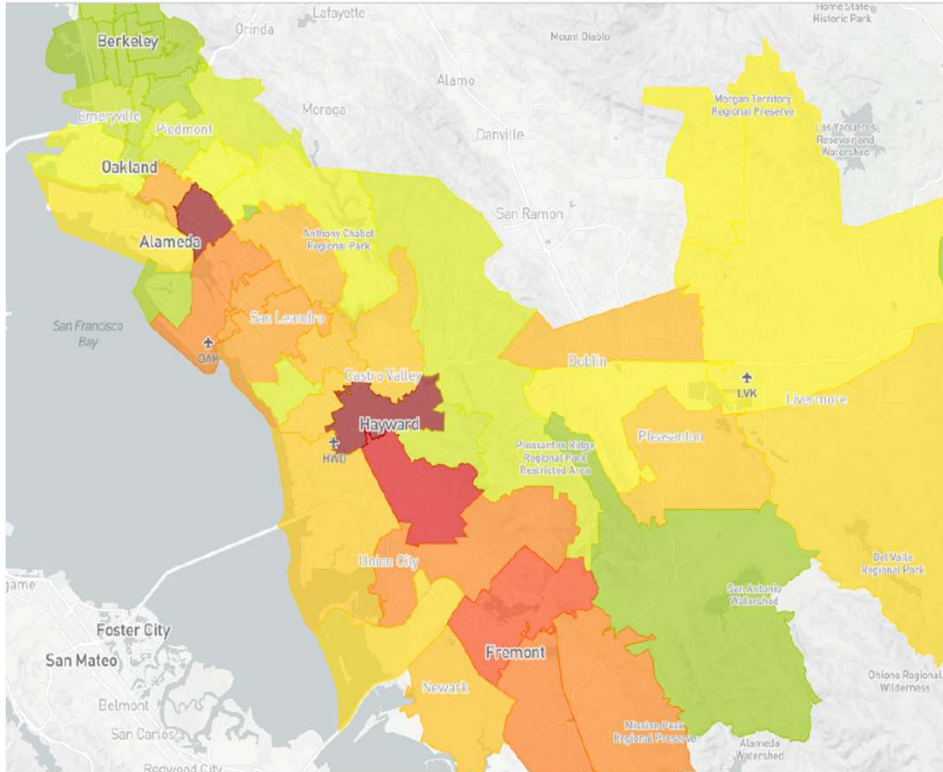
NOTE: Youth vax rates are estimates based on data in CAIR and 12-17 pop estimates. Race/ethnicity is unknown for 15% of youth (12-17) who received at least one dose in CAIR. Thus, vaccination rates by RE may be an under-estimate and unvaccinated estimates by RE may be an over-estimate.

Unvaccinated Youth (12-17) Estimates by City/Place





Alameda County COVID-19 Vaccine Incentives Program



- **Program Goal:** Provide incentives to increase vaccination rates, with a focus on high priority areas of Alameda County by 15-20%.
- **Number of residents to be served:** 5,000-6,000
- **Potential Launch Date:** September 13, 2021
- **Duration:** One year or when incentive supply has been depleted

Alameda County Community Vaccination Clinics



ALAMEDA COUNTY HEALTH CARE SERVICES AGENCY
PUBLIC HEALTH DEPARTMENT

| August 2021 | | | | | | |
|-------------|----|----|----|----|----|----|
| M | T | W | T | F | S | S |
| | | | | | | 1 |
| 2 | 3 | 4 | 5 | 6 | 7 | 8 |
| 9 | 10 | 11 | 12 | 13 | 14 | 15 |
| 16 | 17 | 18 | 19 | 20 | 21 | 22 |
| 23 | 24 | 25 | 26 | 27 | 28 | 29 |
| 30 | 31 | | | | | |

◀ September 13 - 19, 2021 ▶

Event hosted by:

| October 2021 | | | | | | |
|--------------|----|----|----|----|----|----|
| M | T | W | T | F | S | S |
| | | | | 1 | 2 | 3 |
| 4 | 5 | 6 | 7 | 8 | 9 | 10 |
| 11 | 12 | 13 | 14 | 15 | 16 | 17 |
| 18 | 19 | 20 | 21 | 22 | 23 | 24 |
| 25 | 26 | 27 | 28 | 29 | 30 | 31 |

Monday

Tuesday

Wednesday

Thursday

Friday

Saturday

Sunday

13

- 9:00am - 3:00pm Skywest Golf Course **Hayward**
- 12:00pm - 2:00pm Clinton Park **Oakland**

14

- 9:00am - 5:00pm NAHC 3050 Parking Lot **Oakland**
- 9:00am - 3:00pm Skywest Golf Course **Hayward**
- 10:00am - 4:00pm Madison Square Park **Oakland**
- 10:30am - 3:30pm Bible Fellowship MBC **Oakland**
- 10:30am - 3:30pm Eastmont Town Cntr **Oakland**
- 11:00am - 3:00pm College of Alameda **Alameda**
- 1:00pm - 4:30pm Public Library at Civic Center **Livermore**

15

Erev Yom Kippur

- 2:00am - 4:00pm Madison Square Park **Oakland**
- 6:30am - 9:30am Corovan **San Leandro**
- 9:00am - 3:00pm Skywest Golf Course **Hayward**
- 10:00am - 4:00pm AC Transit Division 6 **Hayward**
- 10:30am - 3:30pm Bible Fellowship MBC **Oakland**
- 10:30am - 3:30pm Eastmont Town Cntr **Oakland**
- 10:30am - 3:30pm Hively at LDS Church **Pleasanton**
- 11:00am - 2:00pm AC Transit Division 4 **Oakland**
- 12:30pm - 2:00pm BACS HEDCO Wellness Cntr **Hayward**
- 1:30pm - 4:00pm East Oakland Health Cntr **Oakland**

16

Yom Kippur

- 8:30am - 4:30pm St Vincent de Paul Dining Room **Oakland**
- 8:30am - 4:30pm United for Success Acmdy-MS **Oakland**
- 9:00am - 4:00pm Madison Square Park **Oakland**
- 9:00am - 5:00pm NAHC 3050 Parking Lot **Oakland**
- 9:00am - 3:00pm Skywest Golf Course **Hayward**
- 10:30am - 2:30pm Center of Hope **Oakland**
- 11:00am - 5:00pm Community Church **Oakland**
- 1:00pm - 4:30pm Public Library at Civic Center **Livermore**

17

- 8:00am - 12:00pm Madison Square Park **Oakland**
- 8:30am - 4:30pm Axis Pleasanton Clinic **Pleasanton**
- 9:00am - 5:00pm NAHC 3050 Parking Lot **Oakland**
- 9:00am - 3:00pm Skywest Golf Course **Hayward**
- 10:00am - 3:00pm Hively at LDS Church **Pleasanton**
- 10:00am - 2:00pm Serenity House **Oakland**
- 12:00pm - 7:00pm Daylight Foods **Union City**
- 1:00pm - 3:30pm Laney College **Oakland**
- 1:30pm - 4:00pm West Berkeley Health Cntr **Berkeley**
- 4:30pm - 7:30pm Our Lady of the Rosary **Union City**
- 5:00pm - 8:00pm First Presbyterian **Hayward**

18

- 9:00am - 11:00am Hively at LDS Church **Pleasanton**
- 9:00am - 1:00pm Lake Merritt UMC **Oakland**
- 9:00am - 1:00pm St Vincent de Paul Dining Room **Oakland**
- 10:00am - 2:00pm Allen Temple Baptist Church **Oakland**
- 10:00am - 2:00pm Weekes Community Cntr **Hayward**
- 11:00am - 2:00pm BASIS Independent Fremont **Fremont**

19

- 8:00am - 2:00pm Our Lady of the Rosary **Union City**

Legend: ● ACPHD Partner

● Community

● Public Health



Powered By CalendarWiz



Alameda County
Health Care Services Agency



Alameda County Public Health Department
Celebrating Healthy People in Healthy Communities

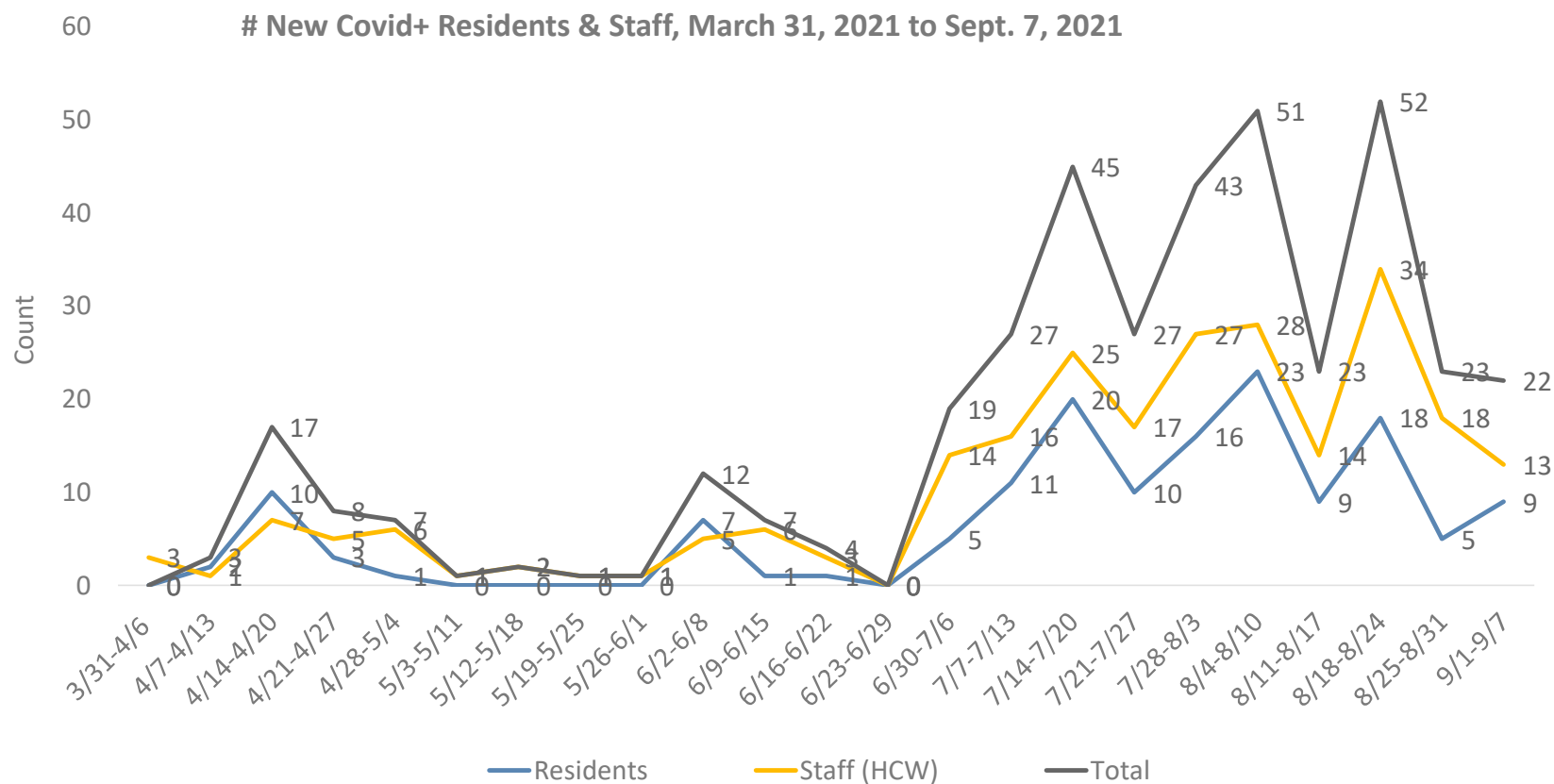
Source: <https://covid-19.acgov.org/vaccines>

Community Testing Site Trends

- **High testing utilization in Hayward and unincorporated areas**
- **Highest positivity in these groups:**
 - ✓ Native Hawaiian or Other Pacific Islander (NHOP) from smaller sample
 - ✓ Latino/Latinx
 - ✓ African American
- **Testing locations on our website**
<https://covid-19.acgov.org/testing>

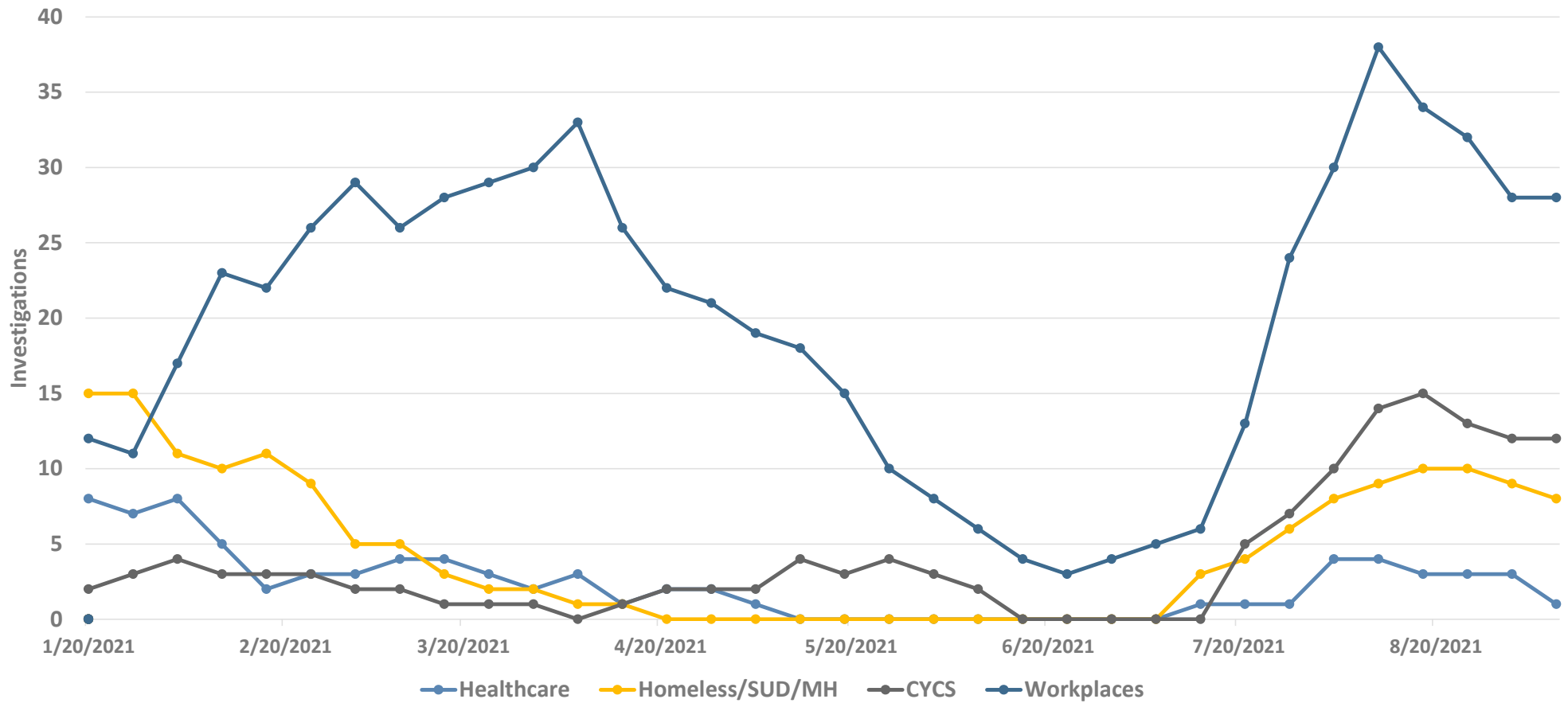


Long Term Care Facilities (LTCF) Outbreak Data



More than 58 facilities received follow up from LTCF Outbreak team from 9/1 – 9/7, from which 21 were confirmed OBs, and 28 were under investigation.

Active Outbreak Investigations



Schools and Safe Learning

Lisa Erickson – HCSA Center for Healthy Schools and Communities,
Michelle Smith McDonald – Alameda County Office of Education (ACOE)

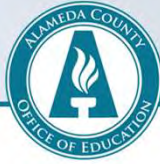


Alameda County
Health Care Services Agency



Alameda County Public Health Department
Celebrating Healthy People in Healthy Communities

Working Together



ACOE

- Supporting districts and schools in following public health guidelines.
- Facilitating and preparing guidance provided by CDPH
- Connecting staff and families with vaccine opportunities
- Working directly with public health on COVID-19 liaison training and outreach to stakeholder groups
- Supporting Districts with testing options



HCSA

- Provides guidance for school reopening
- Provides support with COVID-19 protocols, including case investigation and contact tracing, single cases, and outbreaks
- Provides training for COVID-19 Liaisons
- Meets with school nurses, school leaders, and other stakeholder groups
- Supporting Districts with testing options

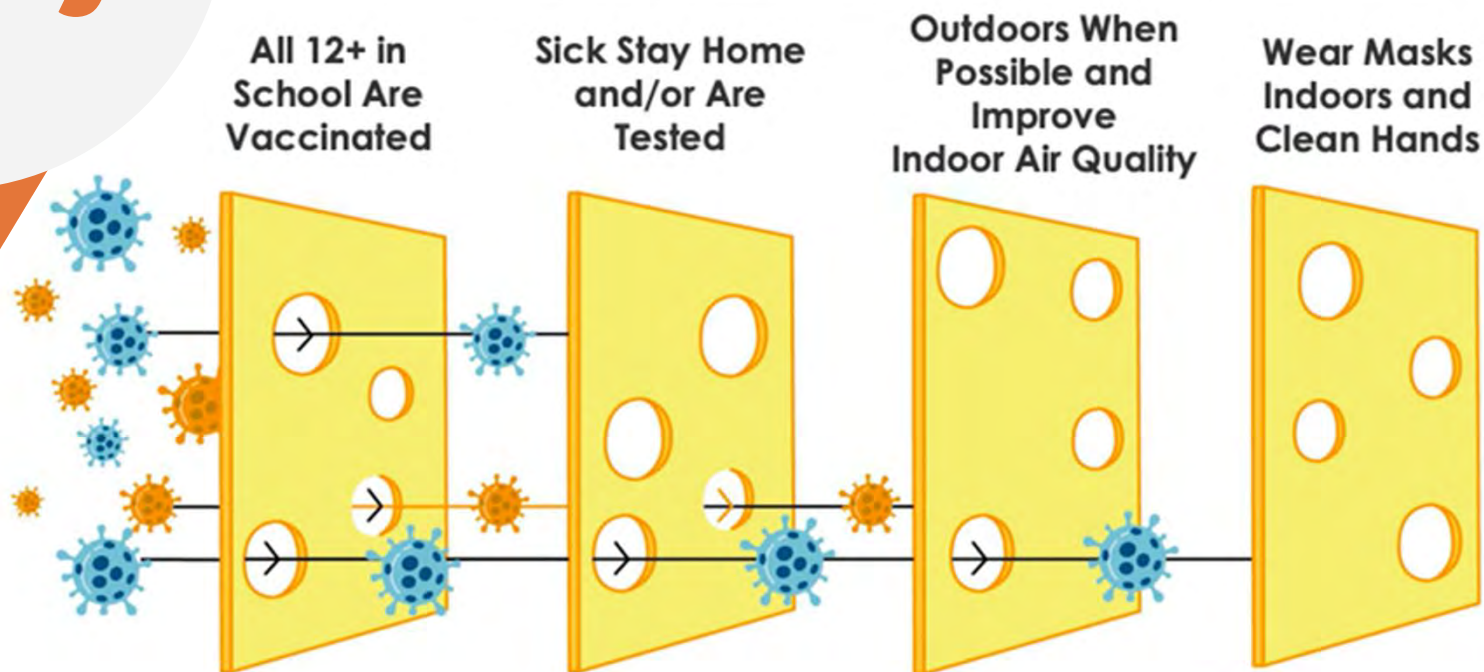


Districts & Schools

- Operate using public health guidelines and recommendations
- Provide case investigation and contact tracing when positive case on campus
- Implement testing programs for students/staff where appropriate
- Provide notification to appropriate groups regarding COVID cases and exposures

Layers of Safety

Making Schools the Safest Places in the Community



Protocols

Masking

Masks are **required for all individuals** in the following indoor settings, regardless of vaccination status:
(State to re-evaluate masking requirements by November 1)

Indoors in [K-12 schools](#), [childcare](#) settings

Outdoors recommended*

Exemptions

Younger than 2 years

Medical conditions, mental health or disability that prevents wearing a mask

Hearing impaired

Work-related risks

*Per [CDC recommendations](#), in areas of [substantial to high transmission](#), people who are not fully vaccinated are encouraged to wear a mask in **crowded outdoor settings or during activities that involve sustained close contact** (including high-risk contact sports) **with other people who are not fully vaccinated.**

Testing

Testing has become critical mitigation measure to keep schools open and students in classrooms.

STUDENTS

Students should be tested if sick/exposed; If entering modified quarantine, must test twice weekly during the MQ period

STAFF

Teachers and staff should be tested if sick/exposed; Unvaccinated teachers and staff must test weekly to comply with state executive order

Test results required in many cases for return to school/return to work

Most testing provided by districts and schools at no cost to students and staff

Testing

Testing Resources

Options

- PCR
- PCR Pooled
- Rapid Antigen

Testing Costs

Free for all schools in California!

Personnel Support

Available for select districts

If district is eligible, your superintendent received letter from CDPH on 8/5/21

Protocols

Modified Quarantine

7-10 day-period during which **asymptomatic, unvaxxed STUDENTS** may continue in-person instruction. Modified quarantine is **OPTIONAL** for schools to implement.

Exposure must have occurred in school setting (inside or outside) with both parties masked

Does not apply to exposures that took place in household or community settings

No extracurricular participation (excluding after school care)

Does not apply to staff

Students tested twice weekly

Protocols

Shortened Quarantine

Is available in cases where:

Masked or unmasked unvaccinated close contacts **who remain asymptomatic.**

Exposures that occur in school, household and community settings

Release from quarantine on day 8 (or later) if test is taken on or after day 6 and result is negative.

Independent Study

Independent Study

The California Legislature passed **Senate Bill (SB 130)**, directing districts across the state to offer **Independent Study (IS)** as the educational option for 2021-22 for families who opt not to have their children return to in-person instruction in public K-12 schools.

- The Legislature designated IS as the lone alternative to in-person learning for the 2021-22 school year only.
- Districts do not have the option to offer “hybrid” learning as was done in 2020-21.
- Short-Term IS applicable for quarantine situations
- Long-term IS for students not returning to in-person instruction

3.3 COVID Survey Results

Dr. George Ayala



Alameda County
Health Care Services Agency



Alameda County Public Health Department
Celebrating Healthy People in Healthy Communities

4. Panelist Comments / Questions & Answers



Climate Survey



Help make your community more resilient to heat, smoke, and other climate impacts. Share ideas for the @AlamedaCounty Climate Action Plan for Govt Services & Operations by taking a survey by Sept. 30 at

<https://tinyurl.com/ACGovClimatePlanSurveyEng>.

Enter a raffle for a \$100 gift card.





**It's wildfire season, and
the air may be affected.**

Stay informed about air quality.



@Dare2BWell

ALAMEDA COUNTY HEALTH CARE SERVICES AGENCY

Keeping our community informed of health risks beyond COVID-19 and providing guidance including links to resources.

As neighboring communities are experiencing fires, please monitor the air quality and protect your health.

For health and air quality information, please visit airnow.gov.



Alameda County
Health Care Services Agency



Alameda County Public Health Department
Celebrating Healthy People in Healthy Communities

THANK YOU!



JOIN THE CONVERSATION

@Dare2BWell



STAY INFORMED



Vaccine Community Advisory Board

2nd Tuesday of the month at 5:30 PM

Next meeting: Tuesday, October 12th

covid-19.acgov.org/community-advisory-group



Alameda County Health Care Services Agency Bi-Weekly COVID-19 Updates

Includes presentations & newsletters

covid-19.acgov.org/response



Updates About COVID-19 Vaccines

Find Testing and Vaccine information

covid-19.acgov.org/vaccines

