

# Alameda County COVID-19 Community Advisory Group

[COVAX@acgov.org](mailto:COVAX@acgov.org)

Meeting 25  
July 12, 2022



Alameda County  
Health Care Services Agency



Alameda County Public Health Department  
Celebrating Healthy People in Healthy Communities

La siguiente presentación tiene servicio de interpretación al Español.

Para iniciar esta función:

1. Haga clic en el icono de Interpretación, el símbolo de un globo o mundo
2. Seleccione Spanish/Español como su idioma

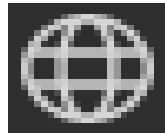
- Opcional: Para escuchar solo el audio en Español, haga clic sobre "Mute Original Audio"

The following presentation has interpretation in Spanish.

To start this function:

1. Click the Interpretation icon, the globe or world symbol
2. Select Spanish as your language

- Optional: To listen to only Spanish audio, click on "Mute Original Audio"



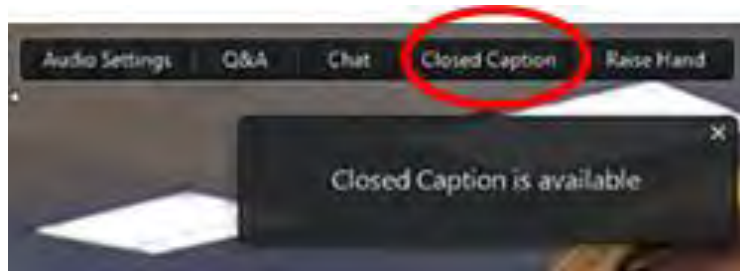
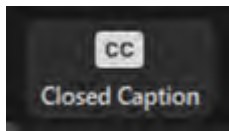
For PC and Android



For iPhone and Mac

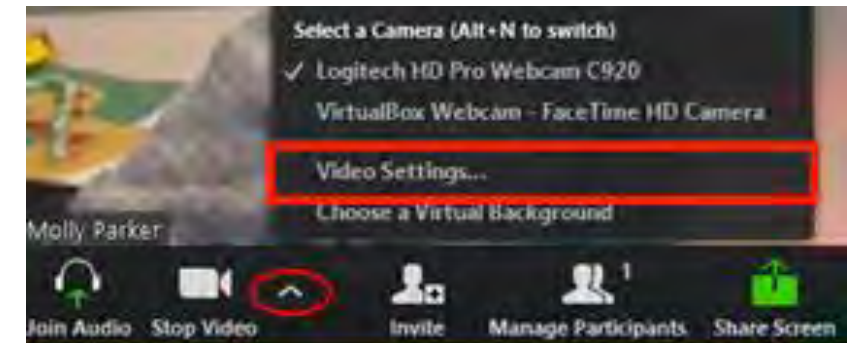
## Using Closed Captioning

- Click **Closed Caption** in the controls at the top or bottom of your screen
- After selecting Closed Caption, you will see the captioning at the bottom of your screen.
- If you need to adjust the caption size
  - Click on the arrow next to stop/start video and choose Video Settings
  - Click on Accessibility
  - Move the slider to adjust the caption size



## Como Usar los Subtítulos

- Haga click sobre Closed Caption en los controles arriba en su pantalla
- Después de seleccionar “Closed Caption”, verá los subtítulos al pie de su pantalla
- Si necesita ajustar el tamaño de los subtítulos
- Haga click sobre la flecha cerca de “stop/start video” y elija “Video Settings”
  - Haga click en “Accessibility”
  - Mueva el deslizador para ajustar el tamaño de los subtítulos



# Agenda

1. Housekeeping & Welcome
2. Partner Updates & Lessons & Advice from the Field
3. County Updates
4. Strategic Refresh
5. Close Out

**Everyone:**

Please mute your microphone  
when not speaking

Please ask your questions  
in the Chat



## 2. Partner Updates & Lessons & Advice from the Field



# 3. County Updates

# Local Epi and Policy Summary

- Spring wave is having second peak after period of improvement in June
  - May be due to emergence of BA.5
  - Impacts from severe disease remain below past waves
- Overall, conditions reflect increasing return to pre-pandemic activities
- Mask requirement lifted 6/24 after key metrics improved or stabilized
  - Subsequent increases in metrics reflect ongoing spring wave
  - Indoor masking remains strongly recommended
- Quarantine policy now aligned with CDPH & CalOSHA
  - Quarantine of close-contacts not required except in high-risk settings
  - Anyone in a shared indoor airspace with an infectious person is considered exposed to COVID-19
  - Masking around others for 10 days and testing within 3-5 days recommended after an exposure
  - Isolation of persons with COVID-19 infection is still required



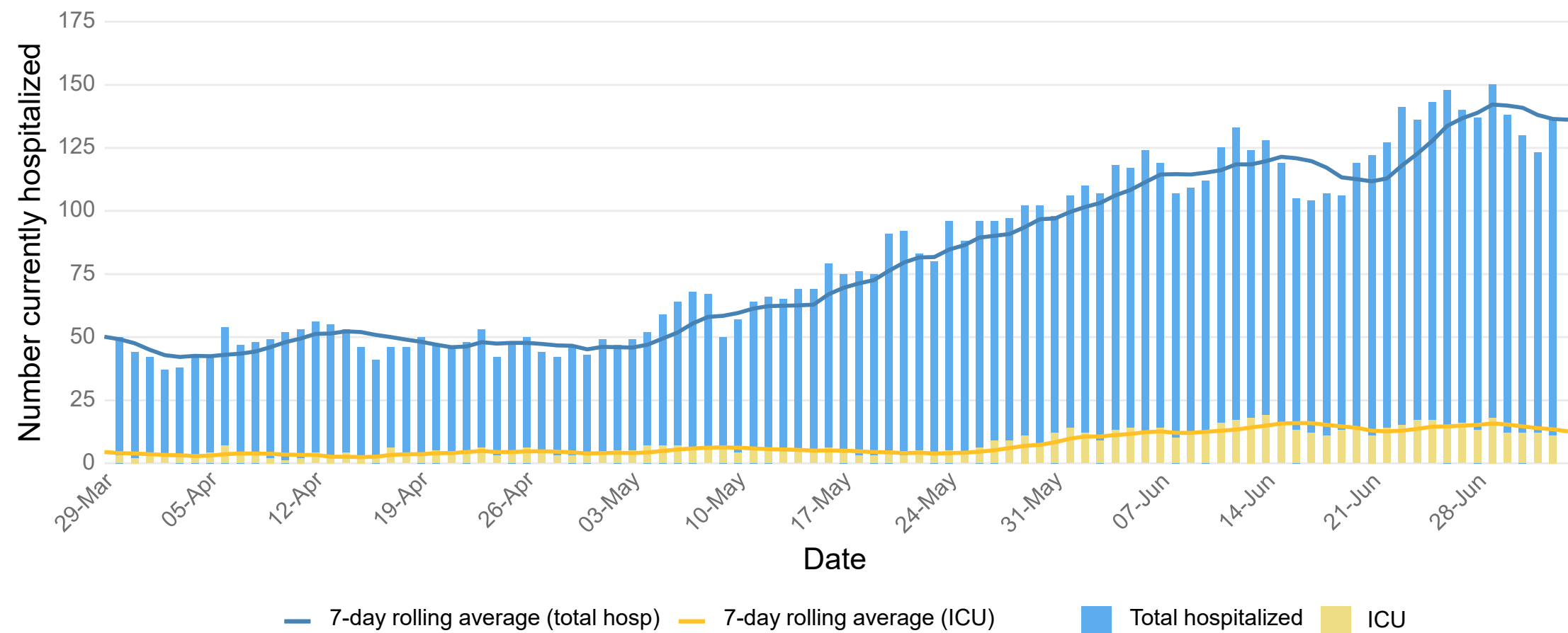
# Updated State K-12 School Guidance for 22-23

- Improve indoor air quality
- Follow mask guidance for general public
- Support antigen testing access
- Support hand hygiene
- Stay home when sick
- Notify families about COVID-19 exposures
  - Asymptomatic exposed children can stay in school; masks and testing recommended
- School and class closures for COVID-19 should only be used as last resort

[K-12-Guidance-2022-23-School-Year \(ca.gov\)](https://www.ca.gov/K-12-Guidance-2022-23-School-Year)



# Patients with COVID-19 Currently Hospitalized in Alameda County

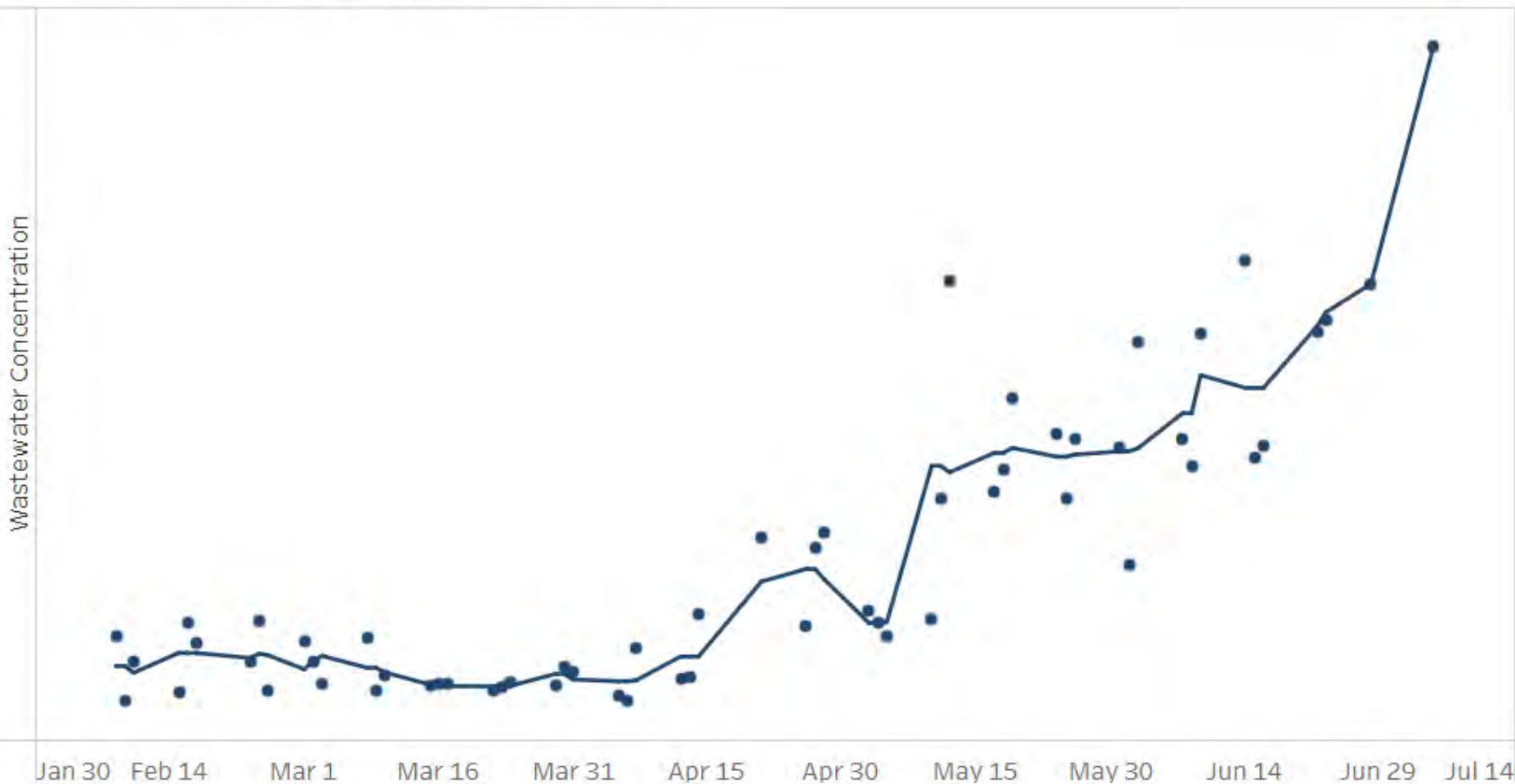


Source: California Department of Public Health

# Wastewater Monitoring to 7/5 – East Bay Municipal Utilities District

Concentration Unit: SARS-CoV-2/PMMoV

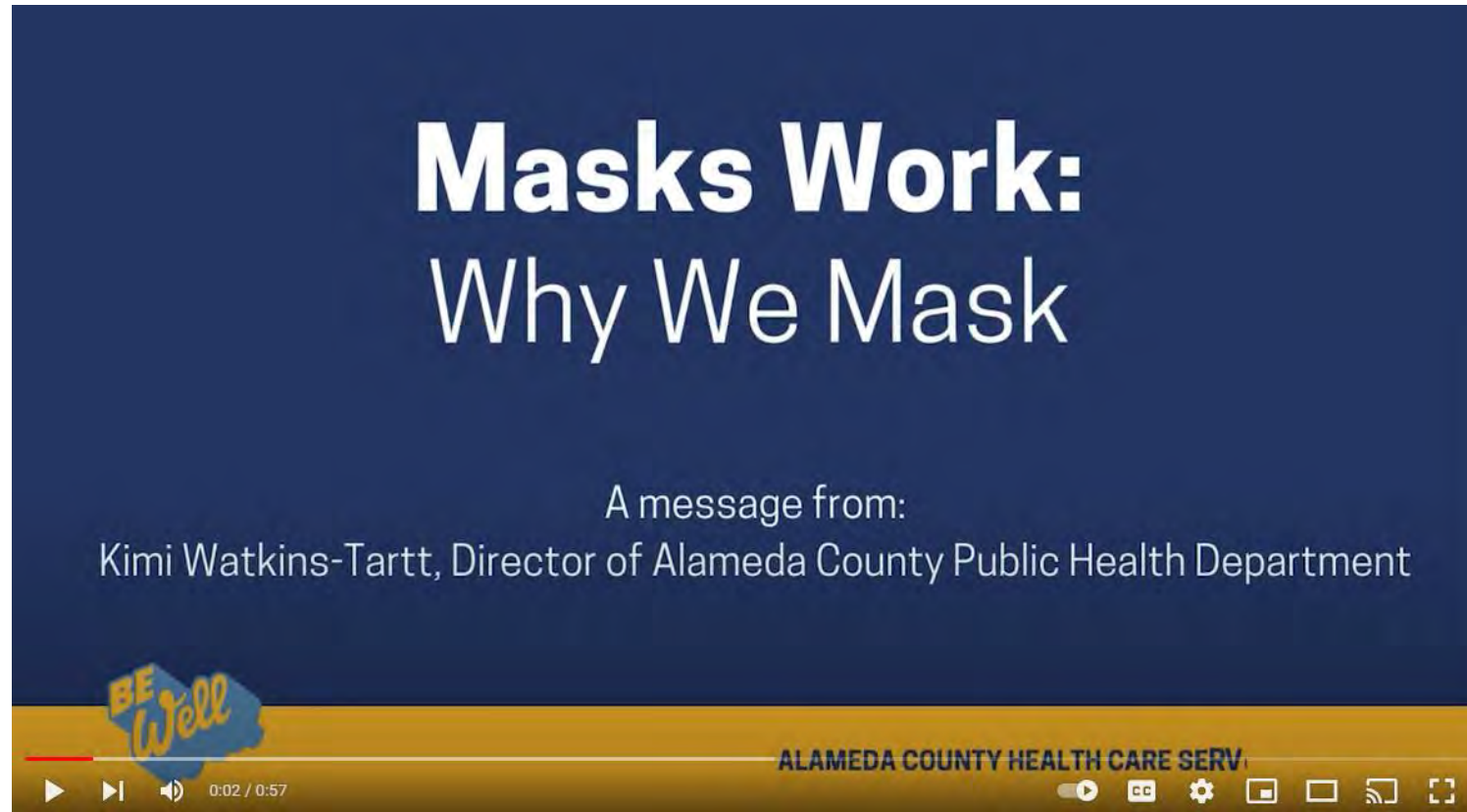
Data Source: CDPH Drinking Water and Radiation Lab



[Cal-SuWers Network Dashboard](#) accessed 7/11/22



# Visit the HCSA YouTube Channel for Latest Video Messages



<https://www.youtube.com/watch?v=Ltjib7S2EaA>

# 4. Strategic Refresh

# 1-YEAR COVID-19 STRATEGY

*Strategic refresh process*



## Three Phases of COVID-19 Strategy Refresh

**Step 1: May 2022** Review of high-level activities of the plan and get feedback from community

**Step 2: June 2022** discuss masking order; identify priorities for next strategic plan using a racial equity, community-focused lens.

**Step 3: July-August** Share community feedback with COVID Division, ACPHD and HCSA leadership to shape the strategic refresh.

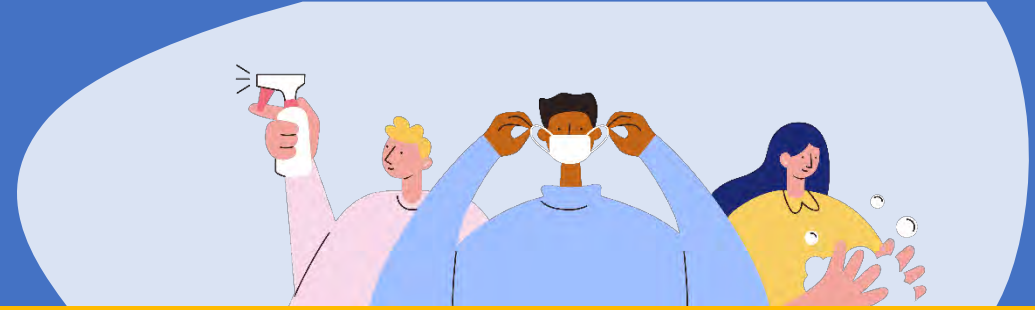
## Parts of the COVID-19 Strategy

1. Goals= Alameda County population level health outcomes for the COVID-19 response focused on:
  - Prevention
  - Disease containment
  - Health disparities
  - Public health infrastructure
2. Strategies= actions to accomplish the goals
3. Implementation Plan= largely unseen and internal to operations team

**Objective of next CAG meeting:** Ensuring the next version of the Alameda County COVID-19 Strategy has community input

# 1-YEAR COVID-19 STRATEGY

DRAFT for 2022 Strategic Refresh



## GOALS

**Prevent COVID-19 infection, transmission, and serious illness.**

**Test, isolate, and support care of people with COVID-19.**

**Redress COVID-19-related racial/ethnic health disparities.**

**Strengthen, align, and evaluate public health infrastructure.**

## STRATEGIES

- ✓ Vaccinate Alameda County residents and work with the health system to maintain optimal vaccination of residents.
- ✓ Provide guidance and technical support to individuals, organizations, businesses and congregate settings on how to minimize risk, exposure and transmission.
- ✓ Support adoption of policies and procedures that prevent infection and serious illness.
- ✓ Communicate effectively through multiple means to inform and educate *providers and residents and with an increased focus on serving populations disproportionately impacted by COVID*
- ✓ Protect populations *disproportionately impacted by COVID*
- ✓ Support community-informed and community-led health promotion efforts
- ✓ Align prevention, health promotion, and education

- ✓ Expand partnership with health system to maintain access to testing for all.
- ✓ Investigate cases and outbreaks as needed.
- ✓ Isolate people who test positive for COVID and follow current guidelines for quarantine of contacts.
- ✓ Ensure equitable and ethical access to medication and therapies.
- ✓ Link Alameda residents who test positive for COVID to housing resources, and provide housing to those with no other options.

- ✓ Track epidemiologic trends by race/ethnicity, SES, gender, sexual orientation, zip code, and age.
- ✓ Target COVID-19-related services to communities shouldering disproportionate disease burden.
- ✓ Identify and address root causes to disparities in COVID-19 and other health conditions.
- ✓ Support and advocate for funding to community-based organizations led by and serving people shouldering disproportionate disease burden.
- ✓ Ensure that all services are accessible, of high quality, culturally competent and linguistically appropriate.

- ✓ Building on the lessons learned from COVID, strengthen the capacity of people, technologies and systems to address current and future issues that impact the public's health.
- ✓ Modernize and expand surveillance (behavioral and epidemiologic) and laboratory services.
- ✓ Expand program evaluation and community research capacities.
- ✓ Continue to use data to drive decisions.
- ✓ Meaningfully engage communities most impacted by COVID-19
- ✓ Support and advocate for funding to maintain community-based emergency response partnerships.
- ✓ Support and institutionalize the department's disaster service worker corp.
- ✓ Expand quality improvement and assurance initiatives within the public health department.
- ✓ Ensure language access and culturally relatable services across the agency.

# CAG ACTIVITY- Instructions



- You will be randomly assigned to one of ~~four~~ three **breakout rooms** to comment on three ~~four~~ **different topics**
  1. Prevention – Vaccines
  2. Disease containment - Testing
  3. Disease containment - Community Support
  - ~~4. Community Engagement – structure/process for ongoing feedback~~

*An equity approach is built into all strategies*

- Facilitators will rotate through your breakout room. You will not have to move!
- Each round will be 15 minutes

# 1. PREVENTION – VACCINES

## GOALS

Prevent COVID-19 infection, transmission, and serious illness.



### Previous Operations:

- Mass Vaccination sites
- Stable PODS in priority neighborhoods
- Some mobile and in-home vaccination services

### New Operations: *May shift with new guidance about boosters.*

- Reduce the number of stable PODs
- Increase mobile and “pop-up” PODs (going to one-time community events)
- Increase in-home vaccinations, include broadening definition of “in-home”
- Co-locate with other vaccines, such as flu

### Questions:

- What system-wide barriers need to be overcome to make access to vaccines equitable to communities disproportionately impacted by COVID?
- What are potential impacts of co-location of COVID vaccinations with other vaccines to help increase uptake for COVID vaccines?
- What approaches to COVID vaccination efforts should be continued?



# 2. DISEASE CONTAINMENT -TESTING

## GOALS

Test, isolate, and support care of people with COVID-19.

### Previous Operations:

- Universal testing with PCR tests
- Focus of community testing sites in high priority neighborhoods

### New Operations:

- Focus on uninsured or underinsured
- Redirect insured residents to their providers
- Moving to rapid testing, from PCR
- Maintain equity approach: sites located in areas with high transmission and low vaccination + provide test services in language spoken by residents
- Link testing to treatment options

### Questions:

- What are you hearing from your communities about access to test sites? What are the barriers to getting tested?
- What locations should county-led testing services consider to increase COVID testing?
- How can CBO partners support community testing access?

# 3. DISEASE CONTAINMENT

## – Access and Awareness

### GOALS

Test, isolate, and support care of people with COVID-19.

Redress COVID-19-related racial/ethnic health disparities.



#### Previous Operations:

- Vaccine call line, Inquiries line, Community Support Team
- Direct delivery of financial assistance, isolation care kits, food, and other basic needs resources
- CBO partners doing outreach and health education
- Universal case investigations/contact tracing
- Zip codes with highest transmission, lowest vaccination rates prioritized

#### New Operations (continue to apply equity priorities):

- Combining Vaccine call line, Inquiries line, Treatment Guidance, and Community Support teams to increase accessibility: 510-268-2101
- Proactive outreach for Treatment Education and navigation
- All COVID+ cases receive “virtual assistant” survey with up-to-date information on what to do
- Building resilience via Community Coalitions
- Referrals to financial, food, health insurance, and other basic need resources.
- Case investigations linked to outbreaks prioritized to most at risk/vulnerable settings

#### Questions:

- How aware is your community of COVID treatment options? What are the barriers to access?
- How do communities learn about COVID vaccinations, testing and treatments?
- What outreach and educational strategies are most effective for those with no internet/low tech literacy? Are there neighborhoods/communities that have not yet been reached?

# THANK YOU!

**COVID-19 Vaccine**

[covid-19.acgov.org/vaccines](https://covid-19.acgov.org/vaccines)

**(510) 208-4829**

**COVID-19 Testing**

[covid-19.acgov.org/testing](https://covid-19.acgov.org/testing)

**@Dare2BWell**



## WAYS TO STAY INFORMED



### **Community Advisory Group (CAG)**

2<sup>nd</sup> Tues. of the month, 5:30-7:00 PM; next on 8/9

[covid-19.acgov.org/community-advisory-group](https://covid-19.acgov.org/community-advisory-group)



### **Public Health Commission**

2<sup>nd</sup> Thurs. of the month, 6:00-8:00 PM; next on 8/11

[acphc.wordpress.com](https://acphc.wordpress.com)



### **Health Care Services Agency (HCSA)**

#### **COVID-19 Updates**

Includes presentations & newsletters

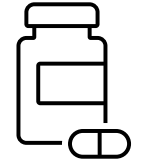
[covid-19.acgov.org/response](https://covid-19.acgov.org/response)



# Extra Slides

# COVID-19 Treatment

- Medication is available for people with COVID at high risk\* of severe illness
  - Paxlovid, Remdesivir, Molnupravir, Bebtelivomab
- Low-barrier treatment options in Alameda County:
  - CDPH Optum Serve mobile test sites (Paxlovid)
  - COVID Division treatment call center in planning
  - COVID Division working with local testing providers to offer treatment (LFCS, WOHC, La Clinica, ROOTS)
- Test-to-treat resources also linked at [covid.gov](https://covid.gov)
  - Test to Treat Locator
  - Find a testing site
- Contact your medical provider first if possible
- COVID Division Call Center in progress to connect COVID positive individuals to treatment options **510.268.2101** [ncov@acgov.org](mailto:ncov@acgov.org)



\* [Underlying Medical Conditions Associated with Higher Risk for Severe COVID-19: Information for Healthcare Professionals | CDC](https://www.cdc.gov/media/releases/2020/s110520-covid-19-risk-factors.html)





## Treatment and Prevention of COVID-19 for Eligible High-Risk Persons



### Did you just test positive for COVID-19?

Treatment is available for persons who are at *high risk for severe disease*. The blue box below lists some of the reasons a person may be at high risk. Talk with a healthcare provider to find out if you are eligible for treatment.

**NOTE: Age and weight requirements may be different for each treatment.**

- Recently tested positive for COVID-19 and are experiencing mild to moderate COVID-19 symptoms, AND
- Are in one or more of the following **HIGH-RISK CATEGORIES** for progression to hospitalization or death:
  - Obesity or overweight
  - Older age (65 years and older)
  - Pregnancy, diabetes, chronic kidney disease, weakened immune system, mental health conditions, heart disease, high blood pressure and certain lung diseases, such as COPD and moderate/severe asthma
  - Other medical conditions/factors, including race/ethnicity, that may place patients at higher risk
  - Black/African American, Hispanic/Latino/a/Latinx, other persons of color should speak to their medical provider
  - See the CDC website for a full list: [People with Certain Medical Conditions | CDC](https://www.cdc.gov/coronavirus/2019-ncov/treatment/index.html)

### Do you have a weakened immune system?

If you do *not* have COVID-19 and have *not* been exposed to COVID-19, you may be eligible to get Evusheld to help prevent infection. You may also be eligible if you cannot be vaccinated.

Talk with a healthcare provider to find out if you are eligible for Evusheld.

### Where can I go for treatment?

- Test-to-Treat sites: See [COVID-19 Test to Treat Locator English \(arcgis.com\)](https://covid-19.test-to-treat.locator.arcgis.com/)
- Your healthcare provider/system, community clinics, retail pharmacies.
- For treatments that require an IV or an injection, some patients may be referred by a healthcare provider to an infusion center.
- You can also complete a self-referral form for monoclonal antibody therapy, which is one type of treatment, at the links below:
  - **Total Infusion:** <https://totalinfusion.com/make-a-referral/>
  - **UCSF:** [UCSF External Self or Provider Referral for COVID-19 Monoclonal Antibody Outpatient Treatment \(PDF\)](#)
  - **Stanford Medical Center, Palo Alto:** Contact [DL-SHC-Pharmacy-COVID@stanfordhealthcare.org](mailto:DL-SHC-Pharmacy-COVID@stanfordhealthcare.org) or call (650) 391-8503. [COVID-19 Monoclonal Antibody Therapies - Patients | Stanford Health Care](#)



ALAMEDA COUNTY HEALTH CARE SERVICES AGENCY  
PUBLIC HEALTH DEPARTMENT

Colleen Chawla - Agency Director  
Kimi Watkins-Tartt - Director  
Nicholas Moss, MD - Health Officer

Contact  
Public Health Department:  
(510) 267-8000 Main Line  
COVID-19 Information:  
(510) 268-2101  
[www.acphd.org](http://www.acphd.org)

\*Adapted from materials provided by the County of San Diego

# COVID Treatment Information

## Know Your Treatment and Prevention Options for COVID-19

There are more treatment options available now for COVID-19. While most people do not need treatment, treatments can prevent hospitalization and death for persons who are high risk. **Talk to your healthcare provider** if you are at risk of serious illness and interested in preventive therapy OR if you are at high risk and test positive for COVID-19.

Treatments are not a substitute for vaccination. Vaccination remains the safest, most effective way to protect you from COVID-19. Treatments must be started early, so don't delay testing. Here is information on the available COVID-19 treatments.

	Evusheld	Paxlovid	Molnupiravir	Bebtelovimab	Remdesivir
Who is eligible?	<ul style="list-style-type: none"> <li>• Ages 12+</li> <li>• Persons <b>without</b> COVID-19 infection OR recent exposure; <b>AND who:</b> <ul style="list-style-type: none"> <li>• Are immunocompromised,</li> <li>• Have received treatment that lowers the immune system, <b>OR</b></li> <li>• Can't get vaccinated due to severe allergic reaction.</li> </ul> </li> </ul>	<ul style="list-style-type: none"> <li>• Ages 12+</li> <li>• Persons with COVID-19 who are at high risk of serious illness</li> </ul>	<ul style="list-style-type: none"> <li>• Ages 18+</li> <li>• Persons with COVID-19 who are at high risk of serious illness</li> </ul>	<ul style="list-style-type: none"> <li>• Ages 12+</li> <li>• Persons with COVID-19 who are at high risk of serious illness</li> </ul>	<ul style="list-style-type: none"> <li>• Adults and children over 3.5 kg (8lbs.)</li> <li>• Persons with COVID-19 who are <b>not hospitalized</b> but are at high risk of serious illness</li> </ul>
When must it be started?	Before infection to help prevent COVID-19	Within <b>5 days</b> from start of symptoms	Within <b>5 days</b> from start of symptoms	Within <b>7 days</b> from start of symptoms	Within <b>7 days</b> from start of symptoms
How is it given?	Injection	<b>Pills</b> taken orally for 5 days	<b>Pills</b> taken orally for 5 days	One-time <b>Intravenous Infusion (IV)</b>	Once daily <b>Intravenous Infusion (IV)</b> for 3 days
Where can it be given?	Healthcare Facility/ Infusion Center	Home	Home	Healthcare Facility/ Infusion Center	Healthcare Facility/ Infusion Center

For more information, visit: <https://www.fda.gov/consumers/consumer-updates/know-your-treatment-options-covid-19>



ALAMEDA COUNTY HEALTH CARE SERVICES AGENCY  
PUBLIC HEALTH DEPARTMENT

\*Adapted from materials provided by the County of Santa Cruz

**UPDATED APRIL 2022**



Alameda County  
Health Care Services Agency



Alameda County Public Health Department  
Celebrating Healthy People in Healthy Communities

Source: <https://covid-19.acgov.org/treatment>



# Boosters Now Recommended for 12+



# ISOLATION + QUARANTINE GUIDELINES

## TESTED POSITIVE

(Everyone)



Stay home for at least 5 days



Wear a well-fitting mask around others for a total of 10 days



### ISOLATION ENDS:

After day 5 with negative test AND if symptoms are not present, fever free or other symptoms are resolving OR after day 10 without a test if fever free and symptoms are resolving



## EXPOSED

(Unvaccinated or not boosted but booster-eligible)



Stay home for at least 5 days then test on day 5



Wear a well-fitting mask around others for a total of 10 days



If testing positive, follow isolation recommendations OR if symptoms develop, test and stay home



### QUARANTINE ENDS:



After day 5 with negative test AND if symptom free OR after day 10 without a test if symptom free



## EXPOSED

(Boosted or vaccinated but not yet booster-eligible)



Test on day 5



Wear a well-fitting mask around others for a total of 10 days



If testing positive, follow isolation recommendations OR if symptoms develop, test and stay home



@Dare2BWell

ALAMEDA COUNTY  
HEALTH CARE  
SERVICES AGENCY

\*Vaccinated, booster eligible but unboosted workers may attend work during quarantine with test between day 3 and 5





# When choosing a COVID-19 testing site

# LESS is More

Make sure the site you choose is:

✓	<b>L</b> egal	Test kits have received FDA emergency use authorization. Testing sites do not need your social security number or immigration status.
✓	<b>E</b> thical	Your test should be free, affordable or billable to insurance. Any additional cost should be clearly explained.
✓	<b>S</b> afe	Staff wear medical grade protective equipment. Gloves are worn and changed in-between clients. Testing staff implements COVID-19 safety protocols including distancing.
✓	<b>S</b> ecure	Testing site and lab information are available and you should know how your personal information will be used.



Questions or concerns? Please send to: [ncov@acgov.org](mailto:ncov@acgov.org)

Alameda County Health Care Service Agency



Alameda County  
Health Care Services Agency



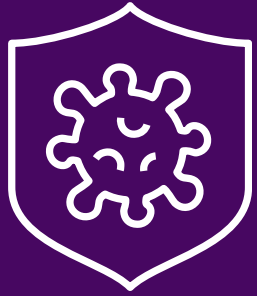
Alameda County Public Health Department  
Celebrating Healthy People in Healthy Communities

# 2-YEAR COVID-19 STRATEGY

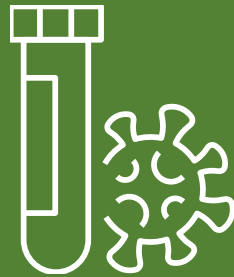
*DRAFT for 2022 Strategic Refresh*



## GOALS



**Prevenir la infección por COVID-19, transmisión y enfermedades graves.**



**Examinar, aislar y apoyar el cuidado de personas con COVID-19.**



**Reparación relacionada con COVID-19 disparidades de salud raciales/étnicas.**



**Fortalecer, alinear y evaluar infraestructura de salud pública.**