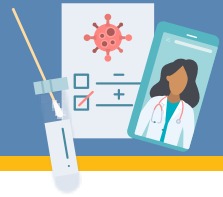


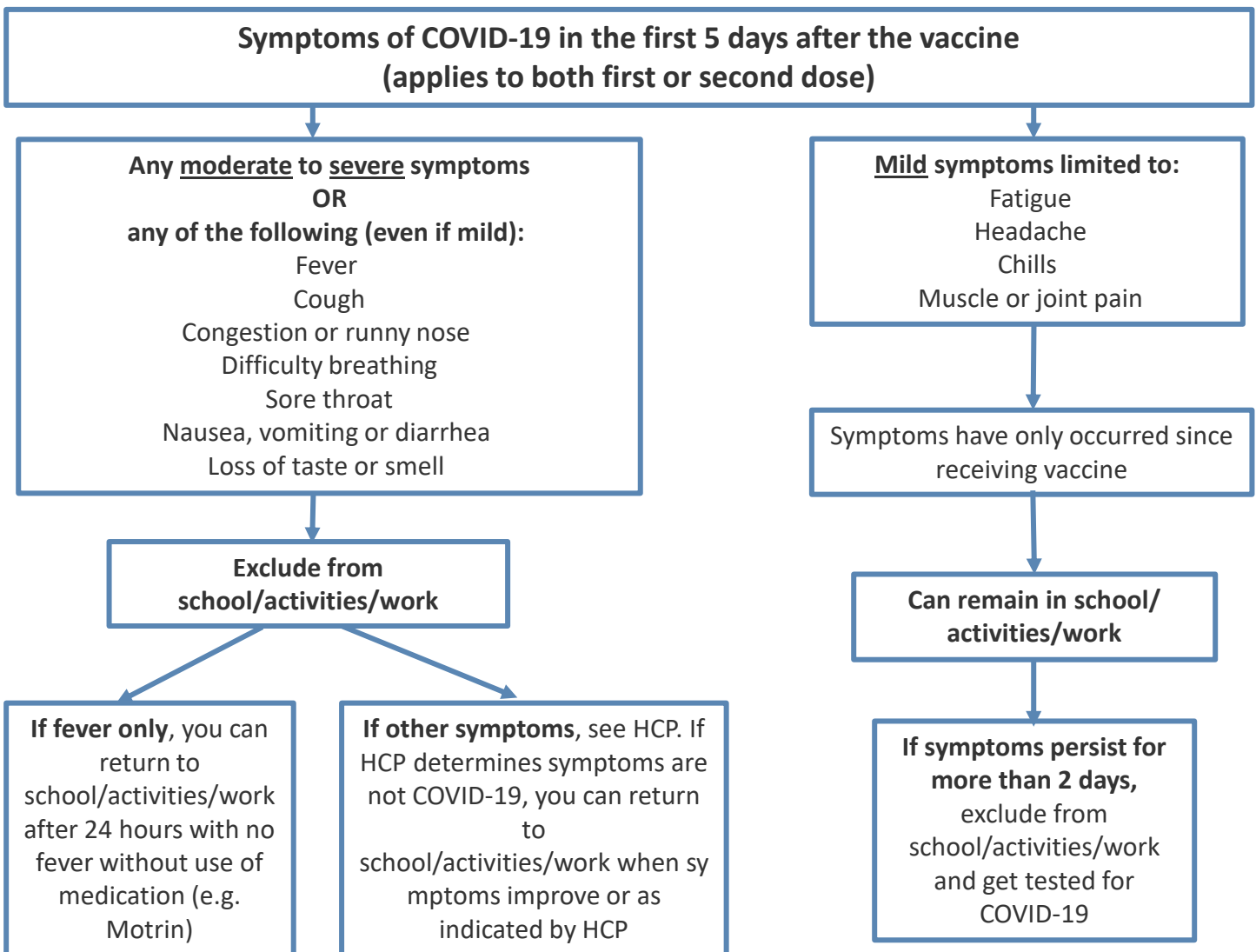
Post Vaccine Symptoms Guidance

What to do if students or staff have symptoms after their vaccine



This guidance is for symptomatic students or staff who have received a **COVID-19 vaccine in the prior 5 days** (Day 1 is day of vaccination) and have NOT had a close contact with a COVID-19+ person during the previous 14 days. Students or staff who are symptomatic post-vaccine and are **within 14 days of a close contact** should be excluded from school/extra-curricular activities and evaluated by a health care provider (HCP) for COVID-19.

Students or staff with symptoms that begin on or after day 6 post-vaccination (1st OR 2nd dose) should be excluded from school/extra-curricular activities and evaluated by a health care provider for COVID-19.



**ALAMEDA COUNTY HEALTH CARE SERVICES AGENCY
PUBLIC HEALTH DEPARTMENT**

Colleen Chawla – Agency Director
Kimi Watkins-Tartt – Director
Nicholas Moss, MD – Health Officer

Contact
Public Health Department:
(510) 267-8000 Main Line
COVID-19 Information:
(510) 268-2101