

Alameda County Board of Supervisors COVID Update

February 9, 2021



Alameda County
Health Care Services Agency



Alameda County Public Health Department
Celebrating Healthy People in Healthy Communities

Presentation Overview

- Local COVID-19 Epidemic
- Shelter in Place
- COVID-19 Variants
- Vaccine Update



Alameda County COVID-19 Epidemic

- Daily case rate is 22 per 100,000 and falling
 - Adjusted Case Rate is 18 (Purple Tier)
 - From 250 to 500 cases reported daily over past 10 days
- Overall test positivity 5%
 - 7.9% in lowest HPI quartile
- Hospitalized COVID cases 279 and falling
 - 88 in ICU
- Expect more surges in 2021
 - Goal still to flatten the curve, slow the spread and protect health care system
 - As vaccine rates and immunity rises, surges will wane



Alameda County Shelter in Place

- Currently in Purple Tier
 - Timeline for Red Tier uncertain – likely weeks
- Supreme Court ordered State to allow indoor worship on 2/5
 - Can be limited to 25% of capacity
- K-6 schools with approved safety plan could open as of 2/5
 - State school guidance in effect for Alameda County
 - Vaccination of staff and students not required for safe school operations



Alameda County COVID-19 Variants

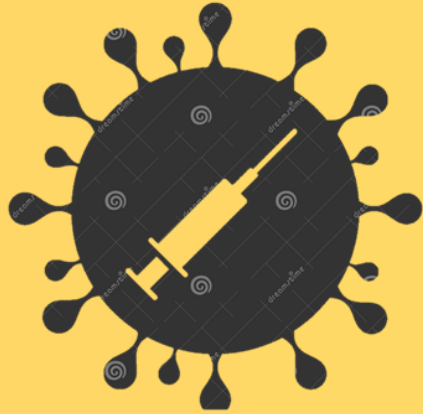
- AC investigating all reports of CDC variants of concern
- 7 known UK variant cases to date
 - All appear to be travel related
- No known South Africa or Brazil variants reported here yet
- West Coast variant has been detected here; over 1000 reported across CA
- No changes to local prevention and vaccine policy related to variants
 - FDA: Pfizer and Moderna vax should be effective against these variants
 - Diligent use of face coverings and physical distancing the most important measure
 - Continue to vaccinate as fast as supply allows



Vaccines



Alameda County in Phase 1b



**Alameda
County
is now
vaccinating:**

- Health Care Workers
- People in Long Term Care Facilities
- People ages 65+
- Food/Agriculture/Restaurant/Grocery workers
- Emergency Services workers
- Education/Childcare workers



**Within each
category,
prioritizing:**

- Older adults
- MediCal or Uninsured
- Areas with very high COVID-19 case rates (HPI Q1 + priority zip codes)
- People with direct contact with clients or the public at work
- People who cannot work from home
- People with limited mobility

**Appointments by
invitation**

**Sign up for
notification:**

<https://covid-19.acgov.org/vaccines>

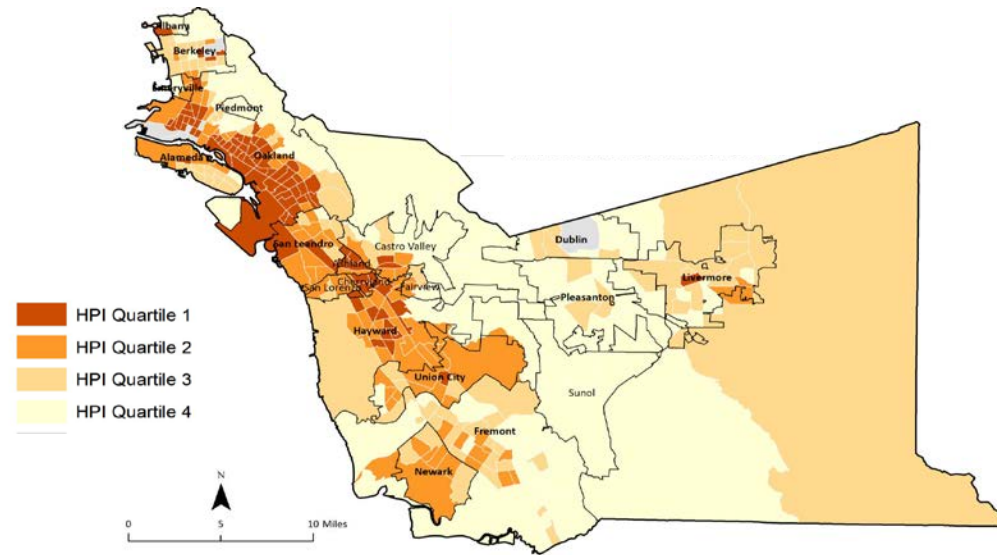


Why are we doing this all at once?

- The State has opened all of Phase 1b, Tier 1
- We are committed to equitable vaccine distribution across Alameda County and this strategy serves both
 - people who are at high risk for severe illness or death
 - people who are at high risk for transmission because of where they live or work
- Moving sequentially rather than concurrently through the phases would mean we couldn't reach essential workers and high-risk settings for many months
- Public health data support this approach
 - Older adults account for the majority of COVID-related deaths
 - The food and agriculture sector has had high transmission rates and includes many frontline workers from communities disproportionately affected by COVID-19
 - Grocery stores have recently been identified as a source of transmission for older adults
 - People who are incarcerated are at high risk for transmission and often come from communities bearing a disproportionate burden of COVID-19

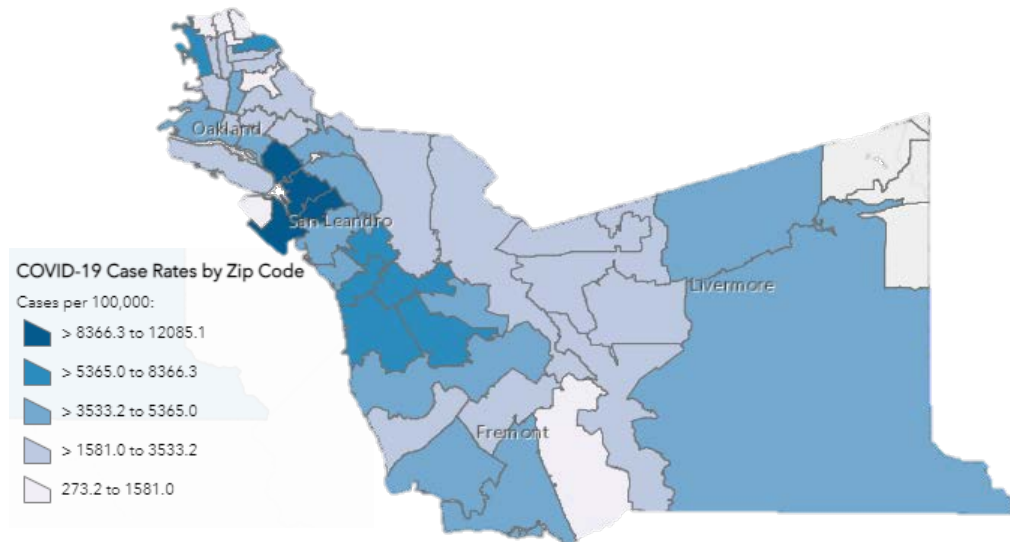


Communities with disproportionate COVID-19 impacts



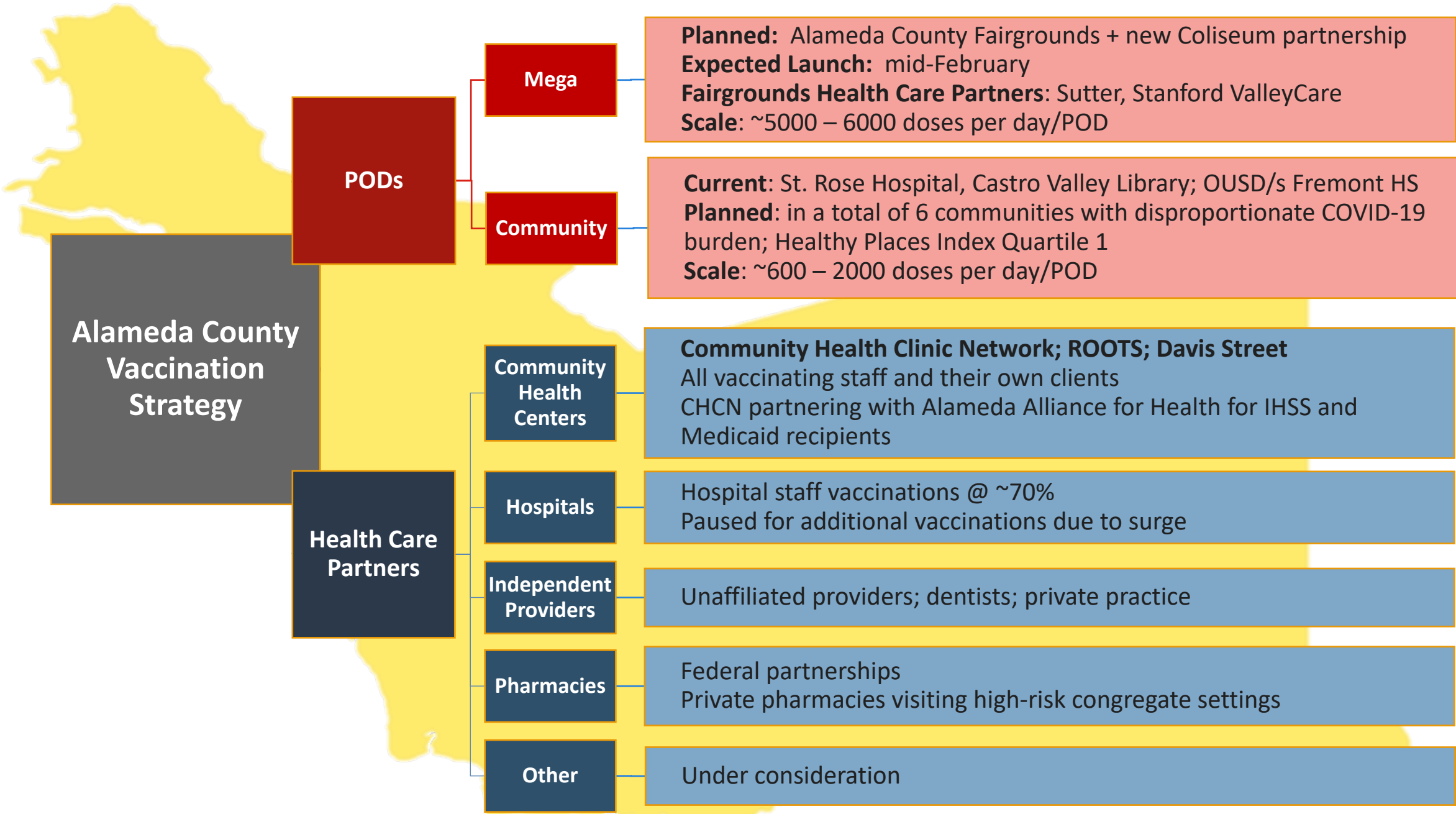
Healthy Places Index (HPI)

- Composite measure of the impact of socioeconomic factors on the health of an area (e.g. housing, income, education, built environment, transportation, access to care)
- Quartile 1 = less healthy conditions
- Quartile 4 = more healthy conditions



Zip codes with highest case rates

- Ashland/Cherryland - 94578, 94541, 94580
- East Oakland - 94621, 94603
- San Antonio/Fruitvale - 94606, 94601
- So. Hayward - 94544
- West Oakland - 94607



Mega PODs



Oakland-Coliseum

- Shift from Kaiser/Sutter/County collaboration to Federal/State/Local collaboration
- Launch expected 2/16/21
- Capacity of 6,000 doses/day in addition to county's existing allocation

Fairground

- Moving forward with Stanford Health Care & Sutter
- Launch expected 2/15/21



Community PODs

Fremont High School

- Launched 2/4/21
- Open Th-S, 8am to 6pm
- Partnership with OUSD
- 640 doses per day
- Focused outreach
- Appointments by invite

Fire Pop-Ups

- Active in South Hayward and East Oakland
- Partnership with Fire Incident Management Team and La Clinica, La Familia, & Tiburcio Vasquez
- ~1000 doses per week
- Available through February
- Appointments by invite

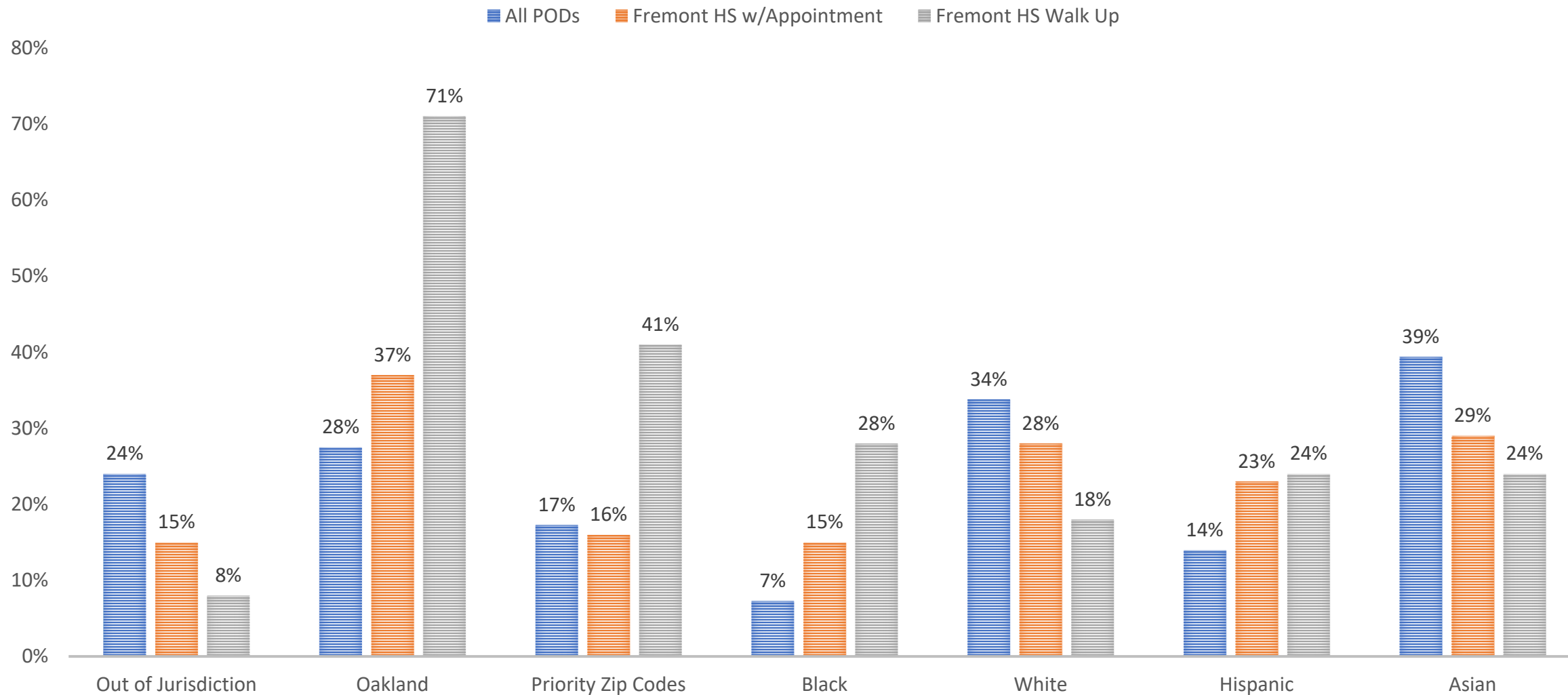
Buchanan Parking @ Golden Gate Fields

Next areas of focus

- Deep East Oakland
- Ashland/Cherryland



FREMONT HIGH SCHOOL POD VS. ALL COUNTY PODS TO DATE



Vaccine supply remains limited

Current/Upcoming PODs	Vaccinating	Start Date	How to make an appointment
Oakland Coliseum State/Federal/Local	Health Care Workers Ages 65+	Feb 16, 2021	MyTurn in the coming days
Alameda County Fairgrounds Alameda County + Sutter + Stanford Health Care	Health Care Workers Ages 65+ Some essential workers	Feb 15, 2021	Appointments by invitation Sign up to be notified: https://covid-19.acgov.org/vaccines
Buchanan Parking @ Golden Gate Fields Alameda County + City of Berkeley	Health Care Workers Ages 65+	Feb 4, 2021	Appointment information: https://www.cityofberkeley.info/covid19-vaccine/
Fremont High School Alameda County	Health Care Workers Ages 65+ Food/Agricultural/Restaurant workers from highly impacted zip codes	Feb 4, 2021	Appointments by invitation Sign up to be notified: https://covid-19.acgov.org/vaccines Call 211 if you live in these zip codes: 94621, 94603, 94606, 94601, 94607
Santa Rita Jail & Emergency Services Alameda County	Jail staff and incarcerated people Law enforcement, Fire, Public Safety Partners	Mid Feb	Appointments by invitation



Vaccine supply remains limited

Health Care Partner	Vaccinating	Start Date	How to make an appointment
Fire Pop-up Community PODs Alameda County IMT + Tiburcio Vasquez Hayward Fire Clinic La Clinica	Health Care Workers Ages 65+ Some essential workers	Through Feb 2021	Appointments by invitation Sign up to be notified: https://covid-19.acgov.org/vaccines
Community Health Centers	Health Care Workers Ages 65+	ongoing	Contact your health care provider (Community Health Center Network, Roots, Davis Street)
Kaiser	Health Care Workers Ages 75+	ongoing	For more information, visit: www.kp.org/covidvaccine
Sutter	Health Care Workers Ages 65+	Feb 4, 2021	For more information, visit: www.sutterhealth.org/covid-vaccine Sutter patients can call (844) 987-6115 for an appointment
Stanford Health Care	Health Care Workers Alameda County residents receiving care at Stanford in past 3 years and aged 65+	ongoing	For more information, visit: https://stanfordhealthcare.org/covid19updates

VACCINATION DATA

By Gender, Age Group, Race/Ethnicity, Place, and Over Time [Mobile version](#)

of Vaccine Doses Administered

187080

of First Doses Administered

145382

of Second Doses Administered

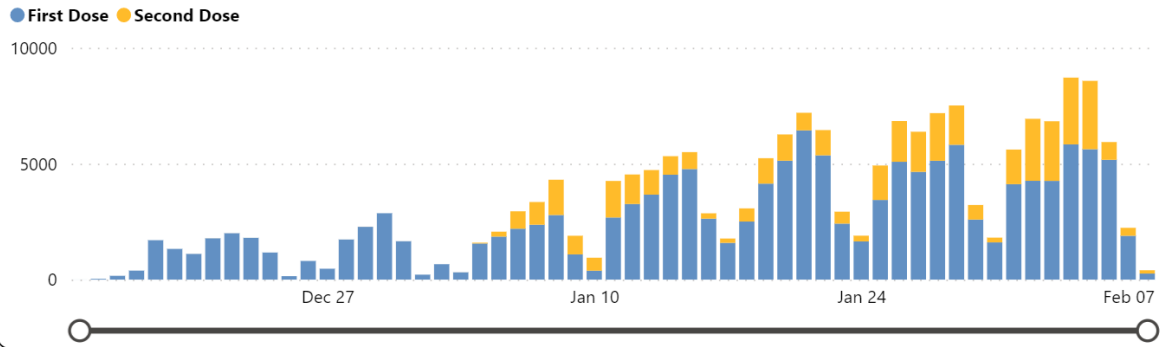
39524



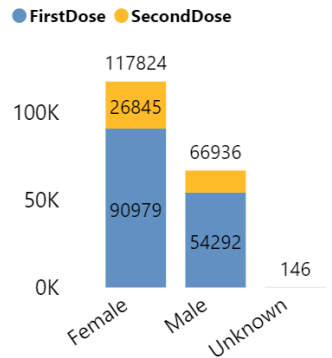
Alameda County COVID-19 Vaccination Dashboard

Alameda County Vaccine Doses Administered by Dose Type by Day

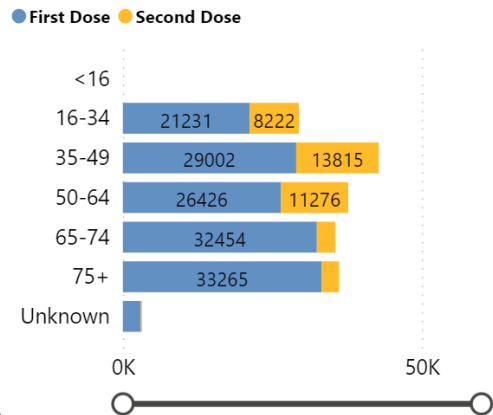
Data from last five days especially subject to change.



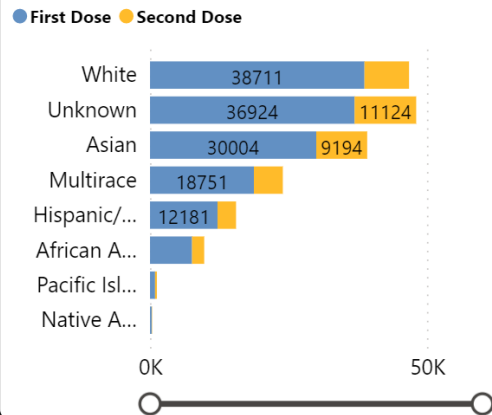
Alameda County Vaccine Doses Administered by Gender



Vaccine Doses Administered by Age Group



Vaccine Doses Administered by Race/Ethnicity



Place	First Dose	Second Dose
Alameda	8194	2233
Albany	2044	444
Ashland	1365	442
Berkeley	12956	2490
Castro Valley	7121	1904
Cherryland	1155	392
Dublin	4501	1356
Emeryville	1199	441
Fairview	1058	250
Fremont	17896	4763
Hayward	12917	4187
Hayward Acres	266	101
Livermore	6991	1882
Newark	3544	1054
Oakland	36383	9565
Piedmont	1921	376
Pleasanton	7796	2259
Remainder of County	434	61
San Leandro	8002	2362
San Lorenzo	2086	594
Sunol	128	22
Union City	7381	2341

Data Source: CAIR
Updated daily
Shows Alameda
County residents that
have been vaccinated

Notes and disclaimers: This dashboard is populated with data from the California Immunization Registry (CAIR), the State's electronic immunization information system. Vaccination records were accessed via CAIR's Snowflake platform. Information currently available in CAIR for Alameda County may not include all vaccinations among county residents.

Key Takeaways

- Vaccine supply remains limited and it will take a while to get through this phase
- We ask people who don't fall into Phase 1a or Phase 1b Tier 1 to please be patient and sign up for a notification
- Vaccine will be available in multiple places and appointments at County PODs remain by invite only at this time
- To ensure equitable distribution of vaccine, County PODs will prioritize appointments for people who are
 - over age 65;
 - do not have insurance or have MediCal;
 - are from communities bearing a disproportionate impact of COVID-19 cases; and/or
 - are at high risk because of where they live or work



Thank you

Questions

