

# Alameda County Board of Supervisors

## COVID-19 Update

Joint Health and Social Services Committee

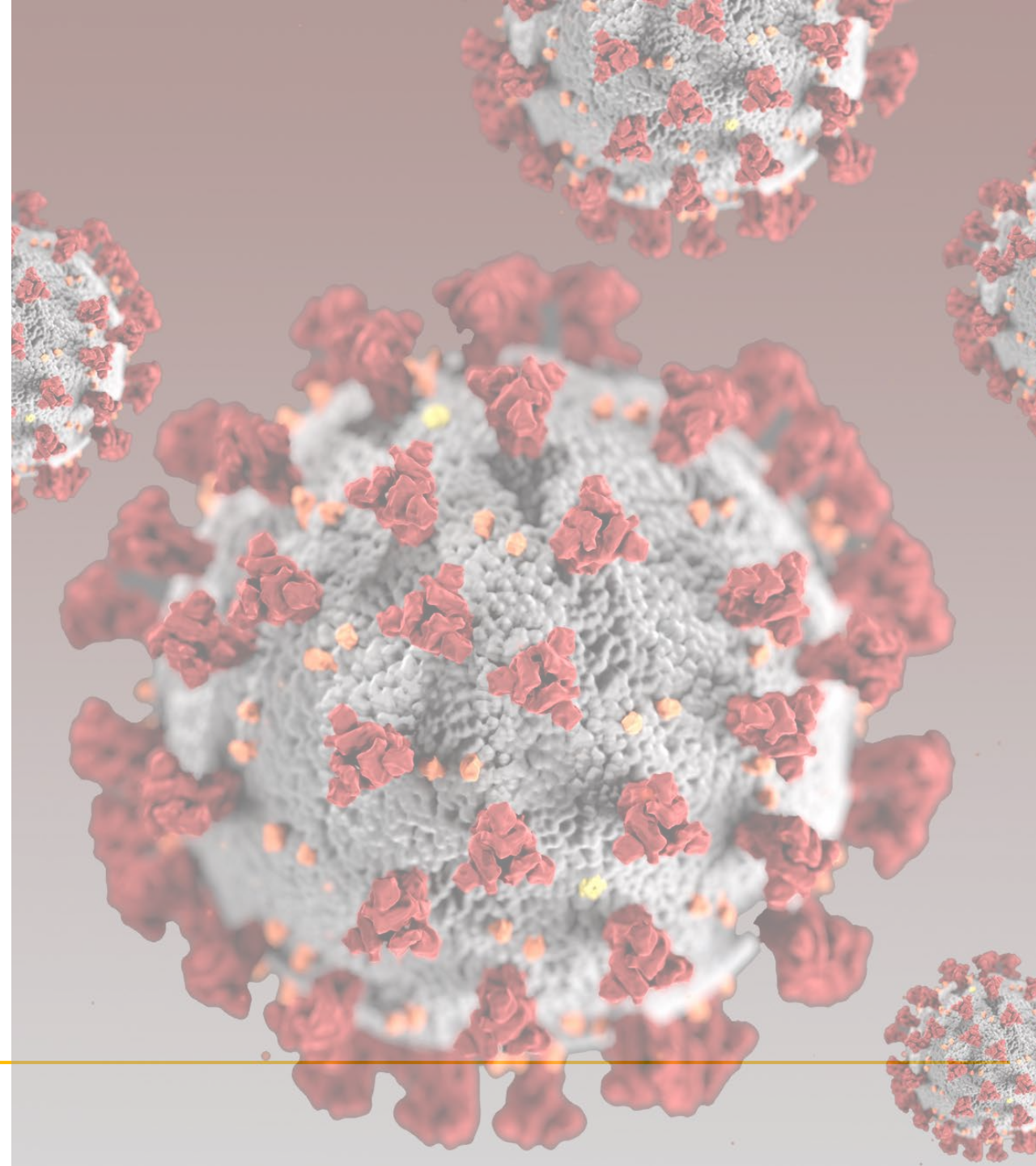
January 25, 2021



Alameda County  
Health Care Services Agency



Alameda County Public Health Department  
Celebrating Healthy People in Healthy Communities



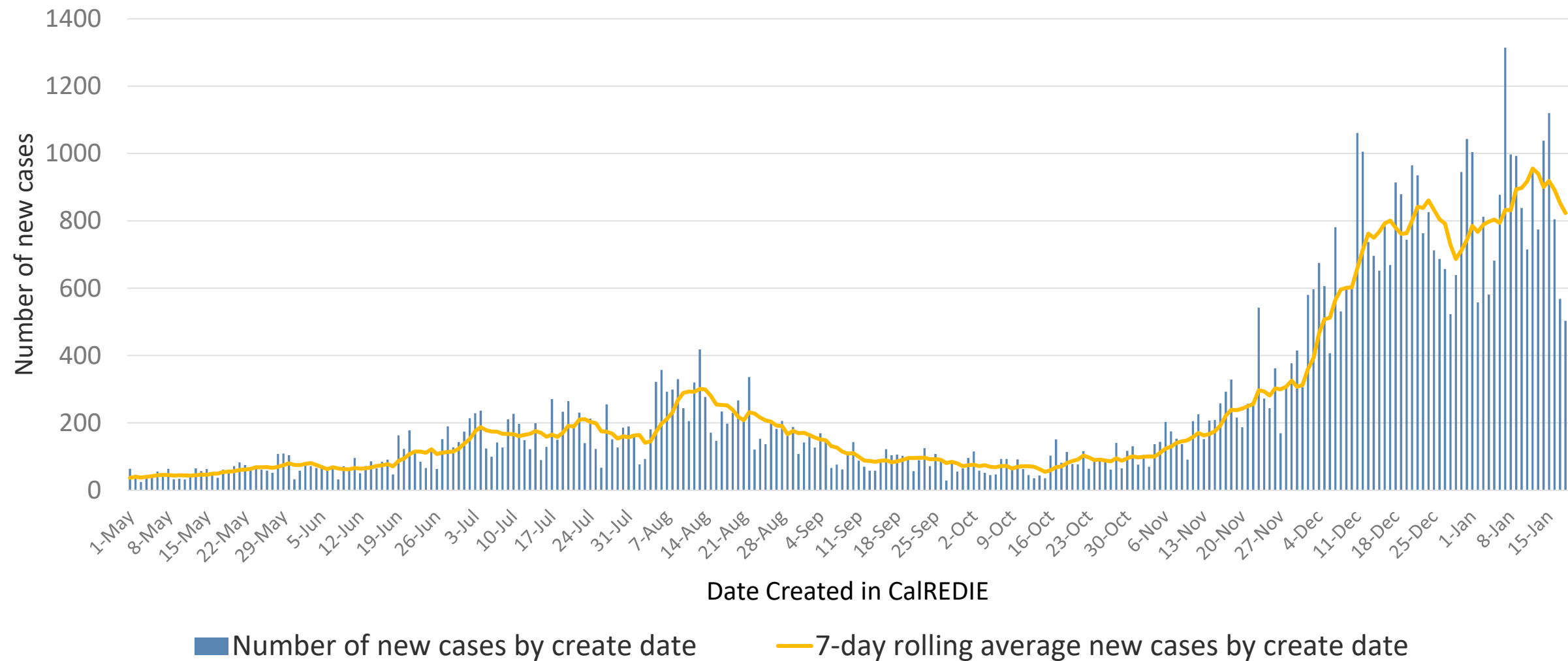
# Agenda

- Current COVID-19 Status in Alameda County
- Vaccine Update

# Current COVID-19 Status in Alameda County: Key Points

- Case rates and hospitalizations improving daily
- State Regional Stay at Home Order may be lifted anytime
  - Will return to Purple Tier restrictions
- K-6 schools will also be able to open soon, with approved safety plans
- Impact of variants remains TBD, but future surges possible

# New Alameda County COVID-19 Cases by date created

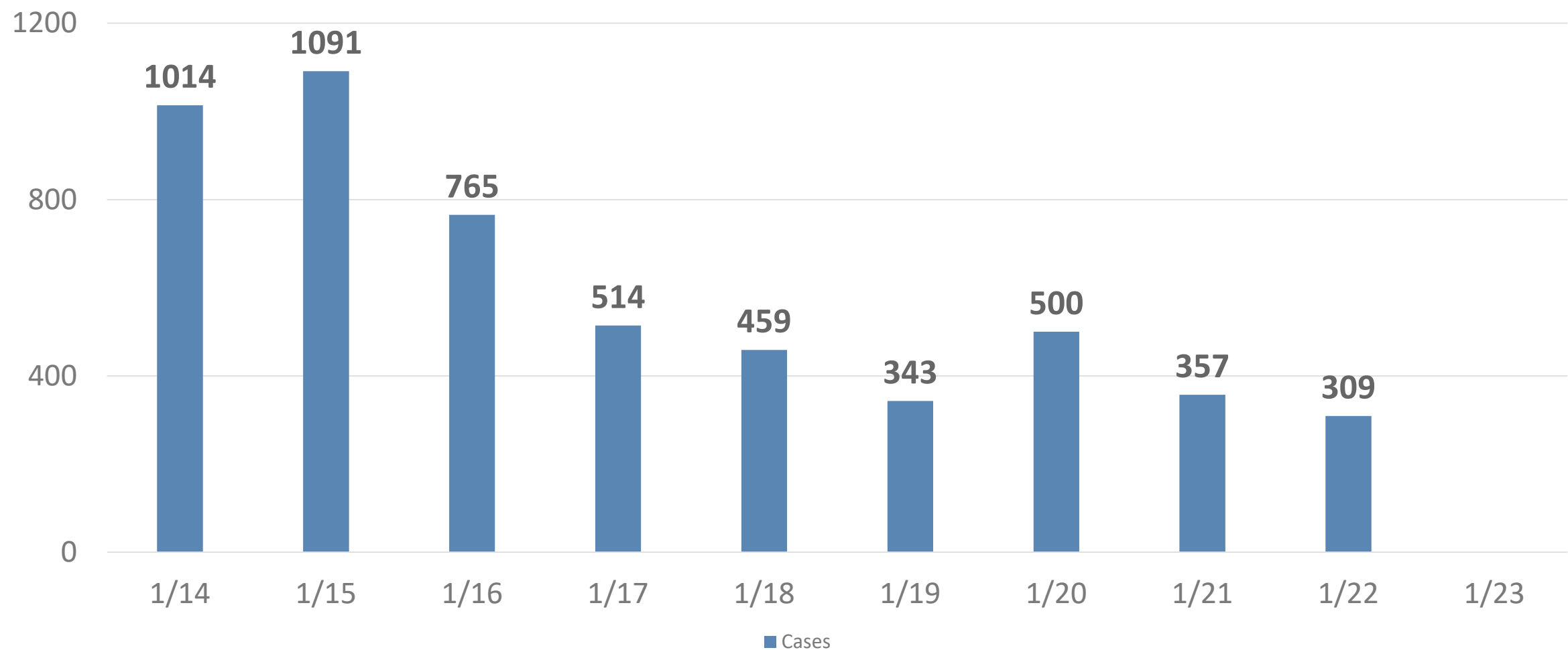


Includes City of Berkeley

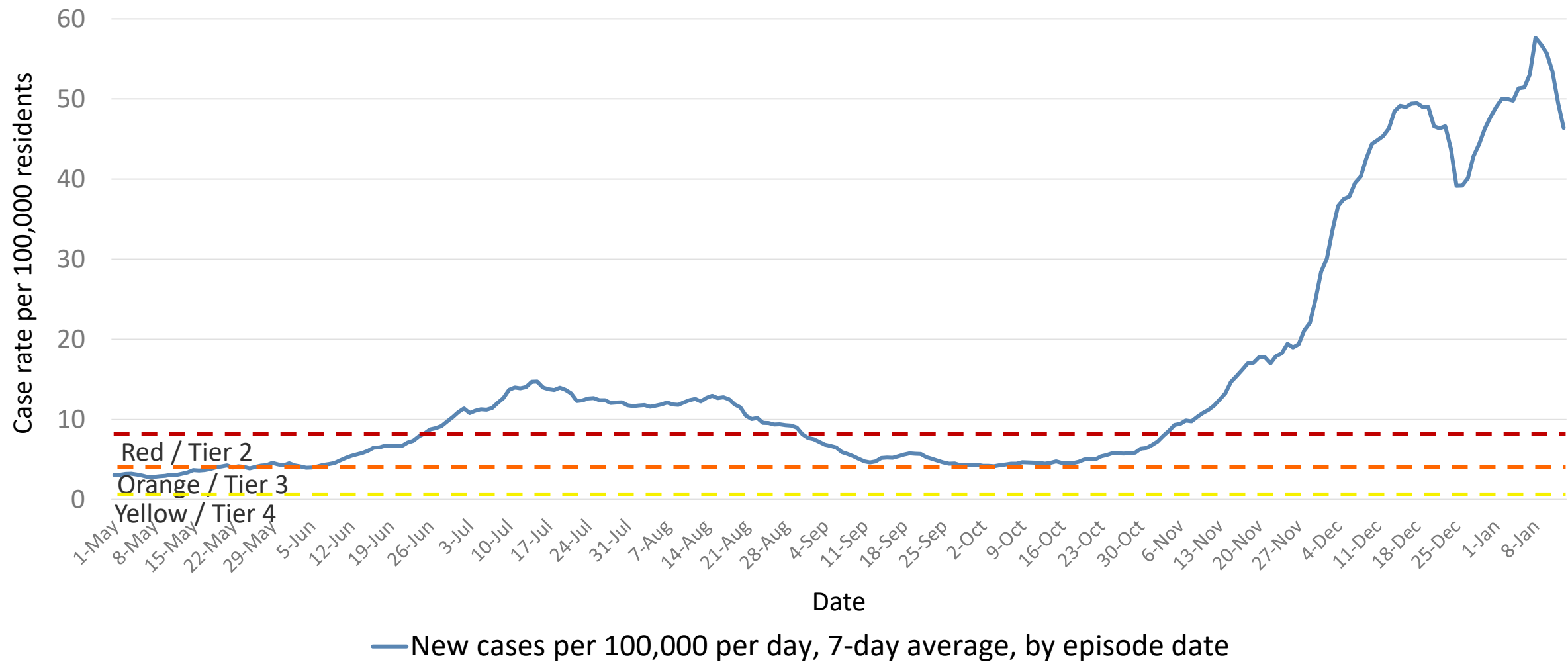
Source: CalREDIE Data Distribution Portal download January 21, 2021 9:30 am.



# Reported COVID-19 Cases, January 14 to 23, 2021



# Alameda County COVID-19 Daily Case Rate

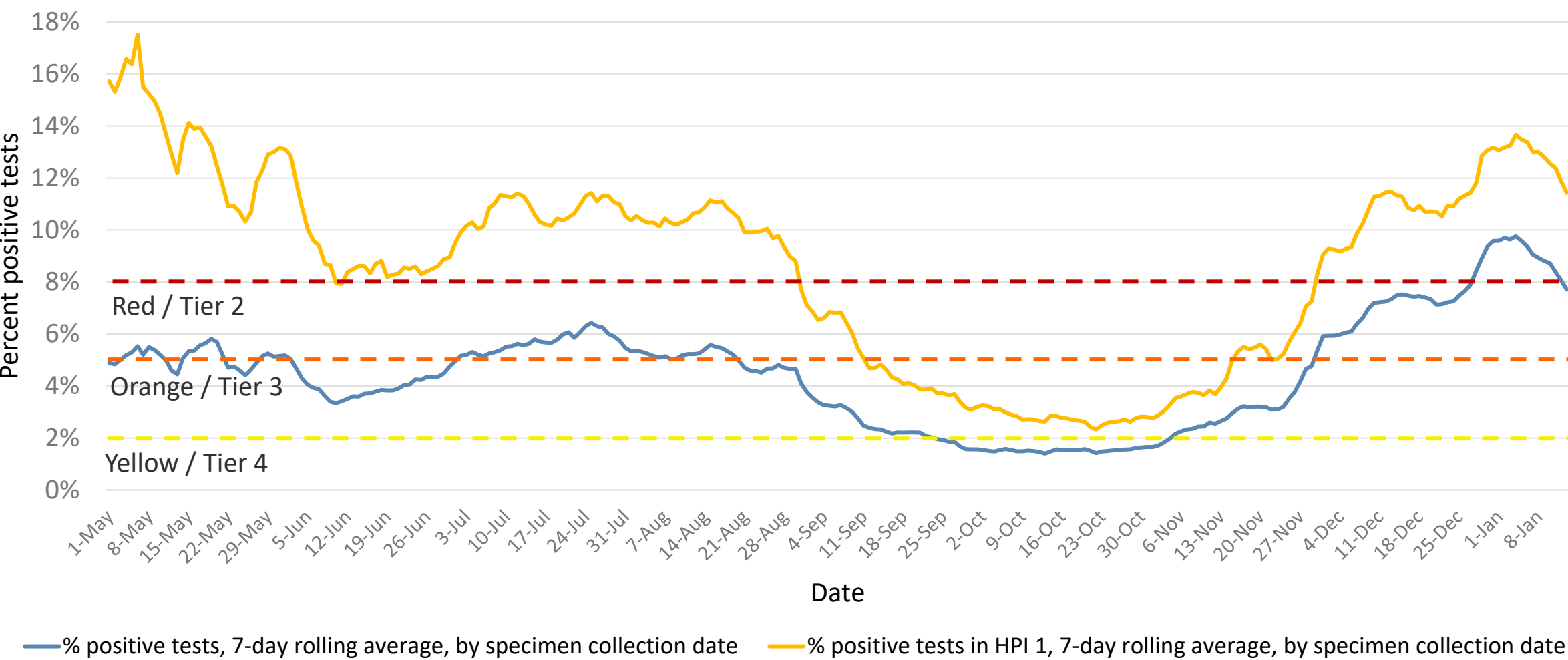


Includes City of Berkeley

Source: CalREDIE Data Distribution Portal download January 21, 2021 9:30 am.



# Alameda County COVID-19 Test Positivity

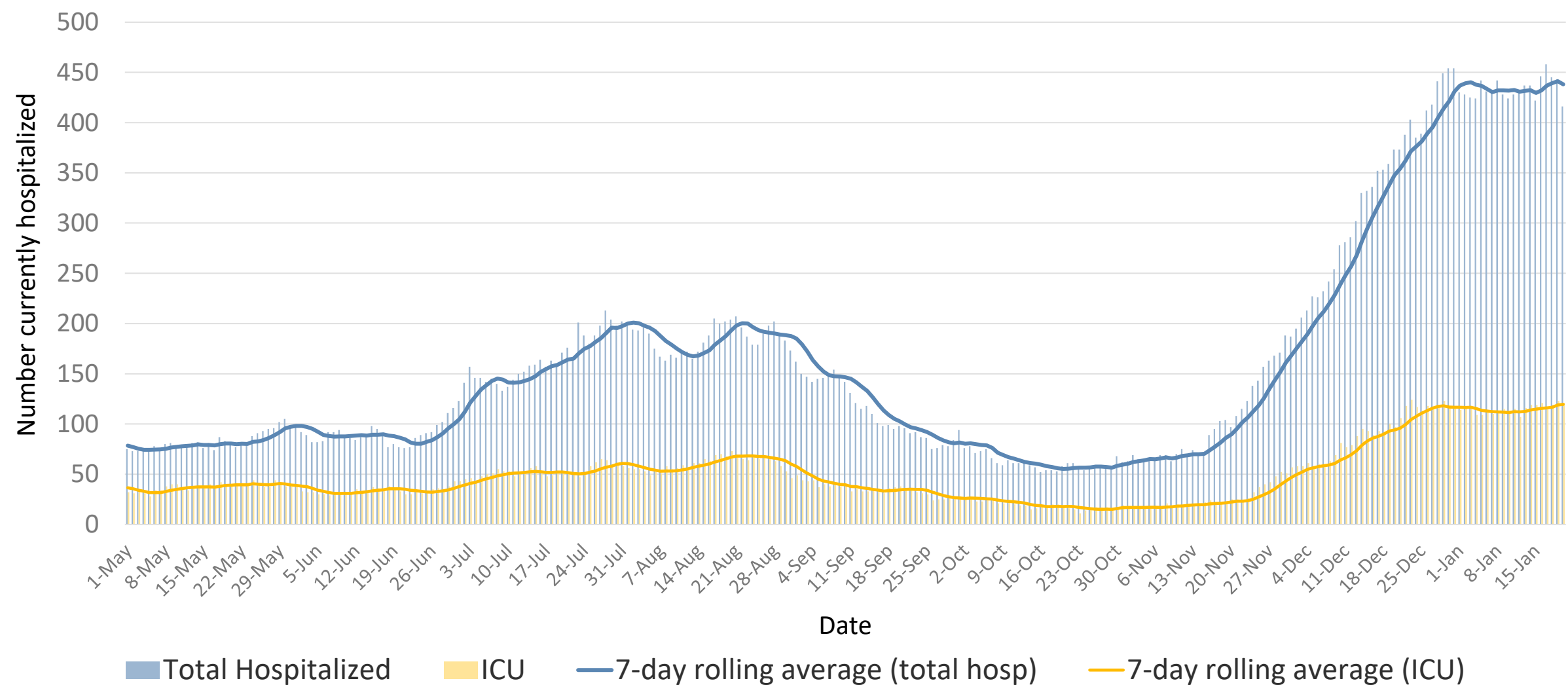


Includes City of Berkeley

Sources: 1) CalREDIE Data Distribution Portal download January 21, 2021 9:30 am. 2) Avellino master spreadsheet.



# COVID-19 Patients Currently Hospitalized in Alameda County



Source: California Department of Public Health



# Alameda County COVID Hospitalizations, January 23, 2020

<b>Hospitalized COVID Patients</b>	<b>404</b>
Staffed Inpatient Bed Capacity	2508
Available Beds	827 (33%)
Surge patients	15
<b>ICU COVID Patients</b>	<b>109</b>
Staffed ICU Bed Capacity	439
Adult ICU Availability Incl. Surge	32.5%
<b>Bay Are Region SAHO ICU Bed Availability</b>	<b>23.4%*</b>

# Restrictions and Reopening

- Expect lifting of Regional Stay at Home Order at any time
  - ICU projections for Bay Area Region, state now favorable
- Will return to Purple Tier restrictions
  - Notable open sectors: outdoor dining, zoos, personal services, hair/nail salons
  - Potential to move to Red Tier in matter of weeks; adjusted case rate is 28
- Schools - state guidance
  - K-6 may open with approved safety plan if adjusted daily Case Rate <25/100,000
  - Other schools may open after 5 days in Red Tier
- Local HO order will focus on general risk reduction
  - Deferring to state for most restrictions and guidance by sector



# Variants Update

- We only have a limited picture of genomic diversity
- B.1.1.7 (UK) – in US, CA;
  - Could become dominant US strain per CDC
  - One report of increased severity/hospitalizations from UK but risk of biased data
- P1 (Brazil), 1.351 (South Africa) not observed in US; immunity concerns
- L452R – in US, CA, other countries for months; possible immunity concerns
- Response:
  - Better surveillance, distancing, face coverings, hand washing, vaccines



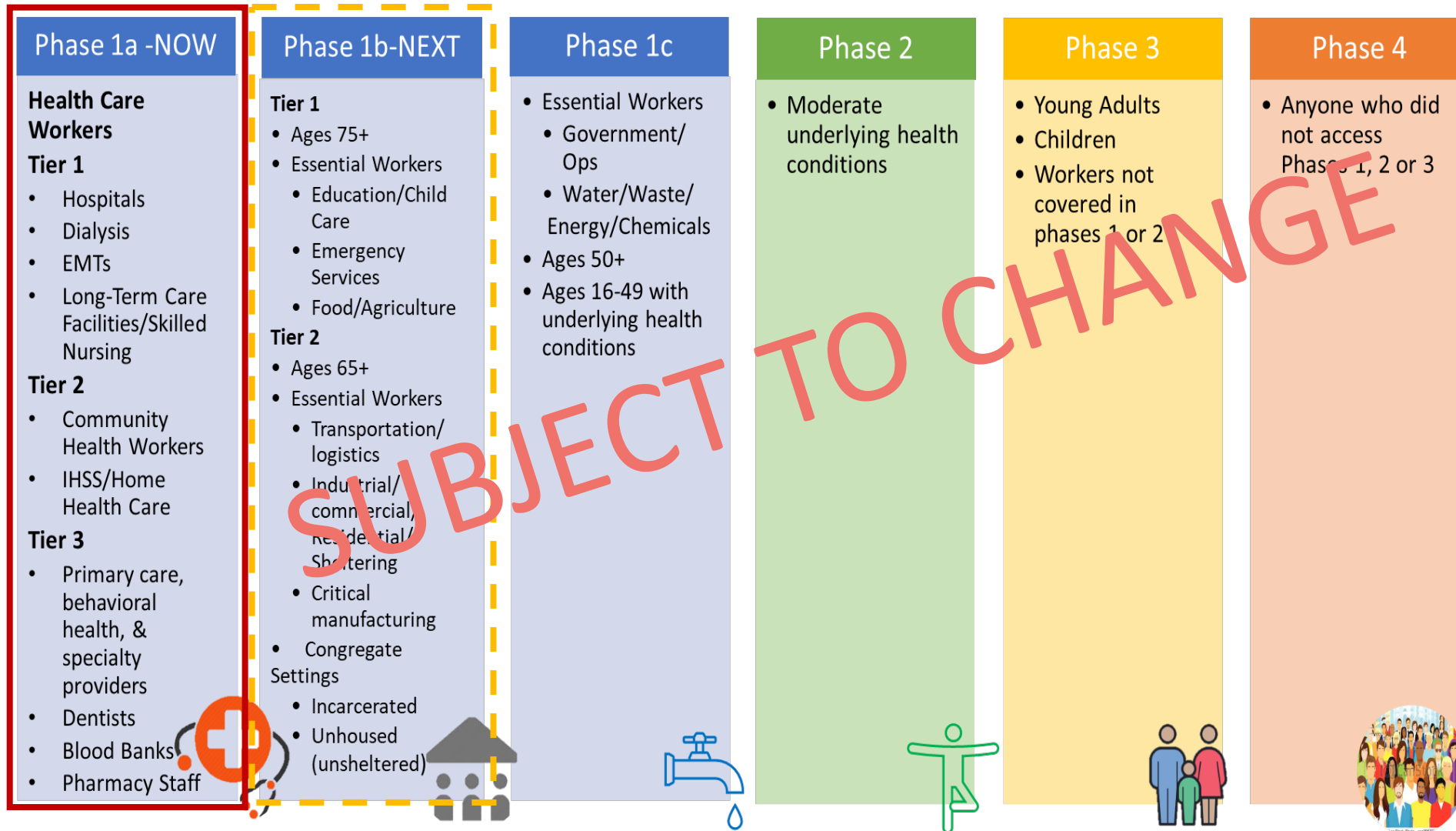
# Vaccine Update

# Vaccine Update: Key Points

- Alameda County is currently vaccinating in State's Phase 1a – health care workers, long-term care facility residents and staff
- Alameda County has received far fewer doses than the number of health care workers in the County
- The pace of implementation continues to be constrained by vaccine supply
- The participation of multiple health care sectors and partners will be required for early and sustained access to vaccine for all county residents



# State's COVID-19 Vaccine Prioritization Framework





# Status of Vaccine in Alameda County as of 1/23/21

<b>Doses received within Alameda County (excluding Berkeley)</b>	<b>102,750</b>
Doses allocated to hospitals and other health care entities	63,725
Doses received by HCSA/PHD	39,025

<b>Doses received by HCSA/PHD</b>	<b>39,025</b>
Doses administered by HCSA/PHD	21,033
Percent of HCSA/PHD doses administered	54%
Doses to be administered by HCSA/PHD in the coming week	4,000



# Status of Vaccine in Alameda County as of 1/23/21

Doses received within Alameda County (excluding Berkeley)	102,750
First Doses	64,550
Second Doses	38,200

Approximate size of Phase 1a population in Alameda County – <u>Now</u>	145,000
Health care workers, long term care facility residents and staff	

Approximate size of Phase 1b population in Alameda County – <u>early February</u>	420,000
>65 years old, education & childcare, emergency services, food/agriculture	





# HCSA's Vaccine Distribution Strategy

- **Deploy a mix of PODs for early and rapid access**
  - Continue Castro Valley, St. Rose Hospital PODs (through end of January)
  - Mega PODs (expected mid-February)
- **Partner with health care systems for sustained access**
  - Near-term:
    - Federal partnership for long-term care facilities
    - Multi-county entities receive vaccine allocations directly from the State (Kaiser, Sutter)
    - Other hospitals (post-surge)
    - Community clinics
  - Future:
    - Pharmacies
    - Private practice
- **Focus HCSA efforts on hard-to-reach and vulnerable populations**
  - Community-based PODs in priority neighborhoods



# Thank you

Questions