

# CORONAVIRUS UPDATES

Get the latest news from our Public Health Department

Week of September 20

## Alameda County Health Care Services Agency Update

*Please share with your networks*

Yesterday, the California Department of Public Health (CDPH) released a joint statement from California Health and Human Services Agency Secretary Dr. Mark Ghaly and California Department of Public Health Director and State Public Health Officer Dr. Tomás J. Aragón in response to the Food and Drug Administration's authorization of Pfizer BioNTech boosters. CDPH will take recommendations from the Centers for Disease Control and Prevention (CDC) Advisory Committee on Immunization Practices (ACIP), and the Western States Scientific Safety Review Workgroup on administering booster doses before taking action. COVID-19 vaccine providers are generally bound to follow CDC vaccine recommendations by the terms of the federal COVID-19 vaccine distribution program. Alameda County remains focused on reaching residents who are unvaccinated, as nearly [23 percent](#) of eligible residents are unvaccinated or haven't received their second dose of a two-dose series. Our Agency will prioritize booster shot access for the most vulnerable residents and those at highest risk for hospitalization and death. For more information on Alameda County's planning, please see story below.

### CalScope study to reach Alameda County

CDPH is conducting a population-based serosurveillance study to help learn how many Californians have antibodies (from a past infection or vaccination) to SARS-CoV-2, the virus that causes COVID-19. In this study, called [CalScope](#), households within select counties including Alameda, are randomly selected and invited to take a free, anonymous, at-home COVID-19 antibody test and survey. Up to one adult and one child from invited households can participate and are eligible to receive a \$20 gift card for each completed antibody test and survey.

We will continue publishing updates biweekly and you can visit our COVID-19 website to find information including this week's [briefing](#) to our Board of Supervisors. We appreciate your readership, encourage your feedback, and ask that you share this newsletter with others.

[Alameda County Dashboard](#)

[Public Health Department Website](#)

---

**FDA Recommends 6 Month Booster Dose for 65+ and High Risk**



This week, the FDA authorized a 6-month booster dose of Pfizer vaccine **for individuals aged 65+ or at high risk**. If the CDC adopts a recommendation by Advisory Committee on Immunization Practices (ACIP), the Western States Scientific Safety Review (WSSSR) Workgroup will also independently

review the recommendation. COVID-19 vaccine providers are generally bound to follow CDC vaccine recommendations by the terms of the federal COVID-19 vaccine distribution program. Alameda County is preparing for COVID-19 booster shots while awaiting further guidance. We are also surveying local health care providers to better understand their plans to provide members and patients with efficient and equitable access to a COVID-19 booster shot once authorized and recommended. We will share more information as it becomes available in the coming weeks. Eligible persons seeking a booster shot should consult with their medical provider or access the booster through a pharmacy, such as CVS, Walgreens, Rite Aid, Safeway or Costco. For a full list of vaccine providing pharmacies, visit [Vaccines.gov](https://www.vaccines.gov).

## Please Vaccinate Your Children as Soon as They are Eligible

Children and youth, 12 and older, and their families can access vaccinations through their normal health care setting, as well as local pharmacies, and community pop-up clinics. The Alameda County Health Care Services Agency partners with school districts and the County Office of Education to bring clinics to school sites. These options will continue to be available for children, aged 5-11, when they become eligible for vaccination which is anticipated later this fall.

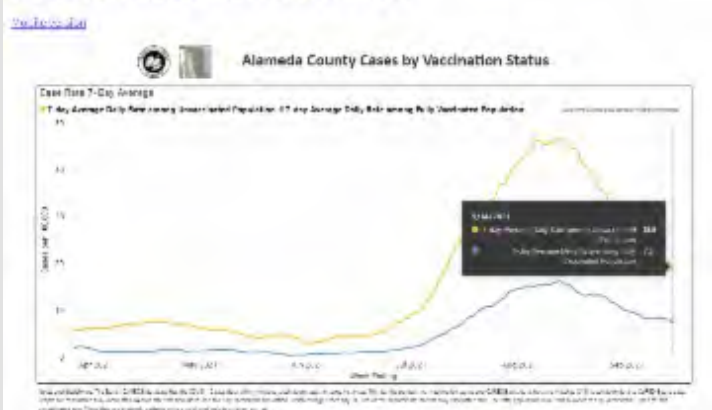


## COVID-19 Data Update

Reflecting 7-day average and 7-day lag:

- Daily case rate 12.2 per 100,000
- Test positivity 2.4%
- HPI first quartile 2.9
- 147 patients, 53 ICU
- Testing increased 12,000 per day
- [Alameda County Data Dashboard](#)

### CASES BY VACCINATION STATUS



## Tiny Homes Grand Opening - Fairmont Navigation Center

Alameda County recently [celebrated](#) the opening

of 34 new and innovative Tiny Homes at the Fairmont Navigation Center in the unincorporated portion of Alameda County. The modular units increase access to privacy and a healthy and supportive environment, representing another step in the County's Vision 2026 and Home Together Plan to end homelessness. The ceremonies were livestreamed on our Facebook page and can be viewed [here](#).



*Pictured from left to right, Supervisor Nate Miley, Donald Frazier,*

*Executive Director, BOSS,  
Kerry Abbott, Director, Office of Homeless Care and Coordination*

People who have been living unsheltered will have access to units that feature a bed, kitchenette, restroom, and dining area, and access to County resources including housing navigation, support services, linkage and referral to social services, medical, behavioral health, and substance use services. In addition, 15 of the units are prioritized for medical respite to individuals experiencing homelessness who are too ill or frail to recover from a physical illness or injury on the street but do not require a hospital setting.

## \$6.5 Million to Address Youth Homelessness

On September 15<sup>th</sup>, the [U.S. Department of Housing and Urban Development \(HUD\)](#) announced awards for their Youth Homelessness Demonstration Program (YHDP) funding. The Oakland, Berkeley/ Alameda County CoC is one of 33 communities awarded YHDP funds to create an in-depth plan to meet the needs of youth at risk of or experiencing homelessness and to work towards ending youth homelessness. The YHDP application was a collaborative effort among local partners including Alameda County's Office of Homeless Care and Coordination (Health Care Services Agency), Community Development Agency, Social Services Agency, Youth Advisory Board, community-based services and housing providers, ALL IN Alameda County, the City of Oakland and EveryOne Home.



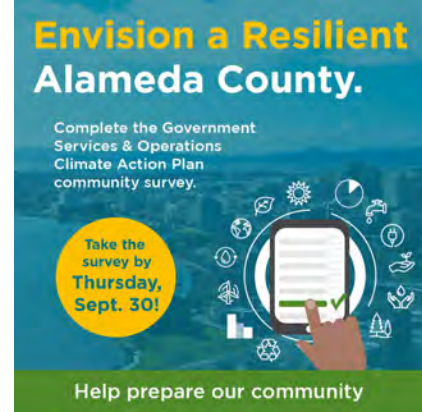
### 1,000+ Moved to Permanent Housing

In related news, we recently moved the 1,000th person from Alameda County's Project Roomkey hotels into permanent housing. This milestone is the result of collaboration between our providers and partners, and our [Office of Homeless Care and Coordination](#). We are actively seeking more places to call home in Alameda County through our property owner/housing provider program. More information is available [here](#).

## Please Share Your Vision for a Resilient Alameda County

Alameda County is seeking input on the development of a new Alameda County Government Services & Operations Climate Action Plan (GOCAP) to move the County towards a more resilient, low-carbon future. Climate change-induced events such as wildfires and heatwaves negatively impact the health of our County's residents and workers. The

GOCAP seeks to reduce emissions from the County's government operations and services to decrease the County's contribution to climate change. The Plan will also include strategies on how to address climate impacts such as more extreme heat days and longer wildfire seasons that contribute to adverse health effects, like heat illness and asthma. Community input is critical to developing a GOCAP that accurately reflects the needs and priorities of Alameda County residents and businesses. The anonymous survey takes 10 to 15 minutes to complete. It is also available in [Chinese](#) and [Spanish](#) and open until September 30. Participants can also enter a raffle to win a \$100 gift card upon survey completion. More information is available [here](#).



[Click here to join our mailing list.](#)

[COVID-19 Update PDF Version](#)

