

Public Health - Emergency Medical Services - Behavioral Health - Environmental Health
Homeless Care & Coordination - HealthPAC - Center for Healthy Schools & Communities

CORONAVIRUS UPDATES

Get the latest news from our Public Health Department

Week of November, 2020

Alameda County Health Care Services Agency Update

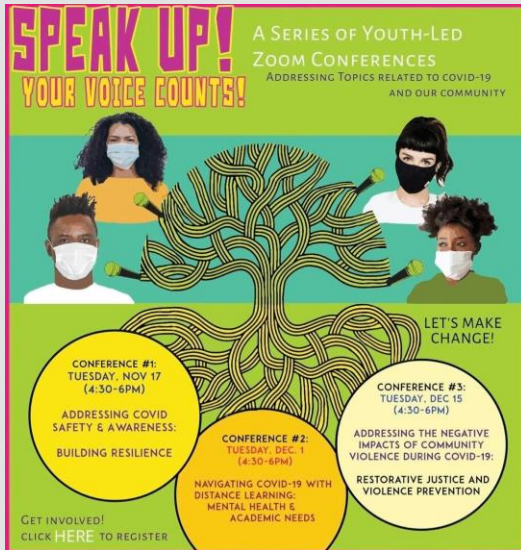
Please share with your networks

Earlier this week we strengthened a [health officer order](#) requiring all health care workers (HCWs) in licensed facilities to be vaccinated for influenza. We also issued a [health alert](#) to Alameda County providers. Health care facilities must implement a process for requiring HCW to receive vaccination unless an HCW can produce sufficient documentation to obtain a medical exemption. Getting the the flu vaccine reduces illness and transmission in our community, reduces clinic visits and hospitalization, and prevents illnesses that mimic COVID-19. We are updating our recommendations for long term care facilities for responding to cases of flu in the context of preventing COVID transmission. To date, there are no known cases of flu and COVID co-infection in Alameda County and we believe this is best preserved by preventive actions like wearing face masks, social distancing, frequent handwashing, and avoiding gatherings.

While Alameda County remains in the Orange (Moderate) Tier on the State's color-coded [Blueprint for a Safer Economy](#), our reopening activities are largely restricted to the Red Tier. We are observing a slight uptick in COVID-19 cases, which is somewhat expected with recent reopening and increased rates across the state. Middle and high schools may open as of November 9, if ready; and we are not not opening additional activities at this time. Moving at a slower pace helps us slow the spread of disease and avoid closures of any opened activities. We will continue to monitor trends and remain ready to pivot as needed.

Each week we provide a digest of evolving information about COVID-19 along with emerging trends and relevant news. We appreciate your readership.

Speak Up! Series of Youth-Led Conferences Addressing COVID-19



The [Oakland Frontline Healers](#) (OFH) are a coalition of 25 nonprofits who have come together to address the systemic needs of East and West Oakland related to the COVID pandemic. The OFH Youth Work Group is hosting three Youth-led Conferences focused on COVID safety, academic and mental health needs, and violence prevention, particularly related to young people ages 13-21. Conferences will showcase Oakland student videos, music, and artworks as well as ideas on how to build resilience and recommendations to respond to young people's needs. All youth and adults are

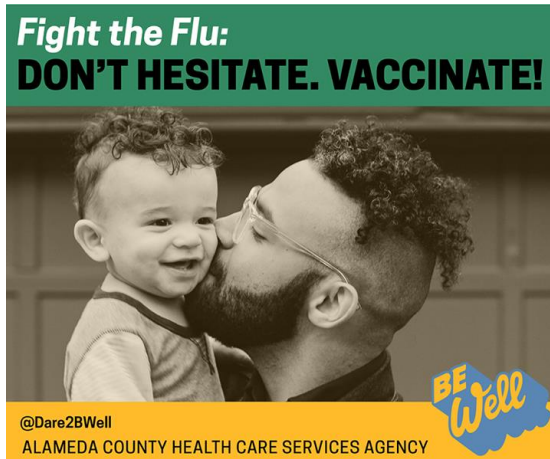
welcome to attend. Register at [Oakland Frontline Healers](#) and contact [Cathy DeForest](#) with questions or ideas.

Fight the Flu: Don't Hesitate. Vaccinate!

As we move into flu season, we remind our community that immunization is critical this season for everyone 6 months of age and older. Here are a few upcoming community flu clinics for individuals seeking a flu shot:

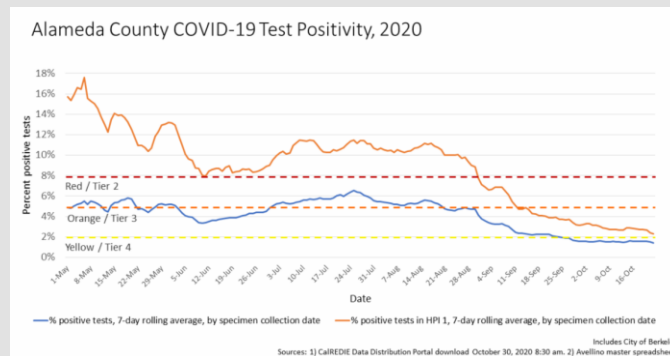
- Nov 6: Castro Valley Adult School
- Nov 14: McClymond's High School
- Nov 16: San Leandro Senior Center

Updated [flu information](#) can be found on our Public Health website along with a current list of [county immunization clinics](#). You'll also find an [interactive map](#) on our



homepage. Stay up to date on flu clinics, COVID guidance, and more by following us on [Twitter!](#)

State Health Equity Metric

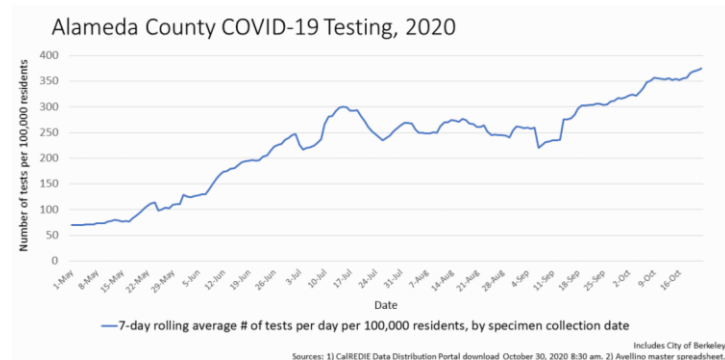


As of November 2 (data from October 18 to 24), test positivity in the least advantaged areas of Alameda County was 2.6% compared to 1.5% countywide. Although we are observing an increase in cases, we continue to see a decline in the County's positivity rate overall.

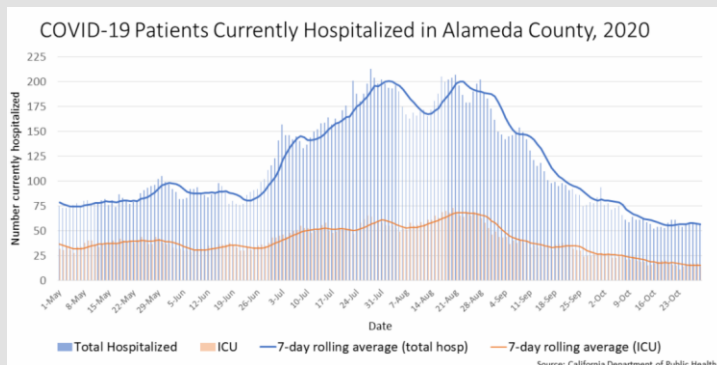
While the overall positivity rate remains low, we are observing higher rates in communities more deeply burdened with disease in our priority neighborhoods. To expand outreach efforts and continued focused response, we are in collaboration with 11 Community Based Organization (CBO) Outreach and Health Education (OHE) teams. With the OHE teams we are building a collaborative for COVID-19 messaging; sharing content and collateral, and strengthening bi-directional communication to refine our approach.

Testing

Testing rates remain high, with a 7-day average for [testing](#) over 5,000. Our [13 community testing sites](#) in Oakland, Berkeley, Fremont, Pleasanton, and San Leandro are still active, along with the weekend testing site at Lake Merritt, and our seven mobile testing vendors. Additional testing sites, opportunities, and events can be found on our COVID-19 [testing page](#).



Trends in Cases and Hospitalizations



The number of new cases per day has increased somewhat following the reopening of several sectors here and across the region. Hospitalizations have also increased slightly from their low point but remain at low levels. However, please note that

hospitalization rates typically increase several weeks after corresponding increases in case rates.

The October 31 metrics reflect the State's 7-day average and 7-day lag (data reported October 18-24):

- The unadjusted case rate is 4.4 per 100,000.
- Cumulative cases were 23,994, and cumulative deaths were 464.
- COVID-19 positive patients included 65 hospitalized and 19 in ICU beds.

Isolation Housing

As of November 4, the occupancy rate for all Safer Ground units was 96% or 989 hotel rooms and trailers sheltering 1,254 individuals. [Project Roomkey](#) isolation/quarantine hotel rooms and trailer units continue to provide housing for people living in crowded conditions or are experiencing homelessness. We are still in the process of preparing for a transition from interim homeless housing to permanent supportive housing through [Project Homekey](#).

Public Health Diabetes Disparities Reduction Initiative



Our Public Health Diabetes *Disparities Reduction Initiative (ACDDRI)* collaborative with the Alameda Alliance for Health, two neighborhood-based clinics, and the University of California Berkeley, received one of six awards for Alameda County from the National Association of Counties (NACo)

Achievement Awards. You can [watch the Board of Supervisors](#) honor the 2020 NACo recipients on November 10 at 11 am. Congrats team!

Did you receive the update from a colleague? Click here to join our mailing list.

[Weekly Update PDF Version](#)



[Follow us @Dare2BWell](#)