

# CORONAVIRUS UPDATES

Get the latest news from our Public Health Department

Week of July 27, 2020

## Alameda County Health Care Services Agency Update

*Please share with your networks*

We have reached the six-month milestone in our pandemic response and recognize that the threat from the novel coronavirus disease will be with us for a significant period of time. Our COVID-19 Operations team is currently addressing the resources and infrastructure needed over the next 1-5 years to proactively manage the pandemic and minimize the harm it causes to our community. We posted our [COVID-19 strategy document](#) two weeks ago, and continue updating as conditions evolve.

Alameda County remains on the [California State Data Monitoring List](#) due to the persistent rate of disease activity at 100 new cases per 100,000 people over 14 days. We remain paused on further reopening at this time.

In non-COVID news, we are proud to announce the launch of our new Community Assessment and Transport Teams (CATT). CATT was envisioned in our Behavioral Health Department [2017 Community Program Planning Process for FY2018-2020](#), and early planning started under [AC Care Connect](#), our whole person care initiative. CATT teams consist of an Emergency Medical Technician and a Licensed Behavioral Health Clinician who provide first response to people in crisis rather than transporting to an emergency room or the local psychiatric emergency services unit. 9-1-1 calls are evaluated for referral to CATT and the teams are currently operating in Oakland, San Leandro, and Hayward.

Each week we bring you a digest of updates from [presentations to the Board of Supervisors](#), weekly calls with our stakeholders, and new information about services. We hope you find this summary useful. We appreciate your readership and your support.

Public Health Department Website

Alameda County Dashboard

## Mask On Alameda County!

[Face coverings are mandatory statewide](#) for everyone over the age of 2. COVID-19 is

widespread in our county and region. We all need to:

- Wear face coverings when in public and within 30 feet of others,
- Maintain at least six feet distance from others,
- Sanitize or wash hands frequently, and
- Stay home when sick.



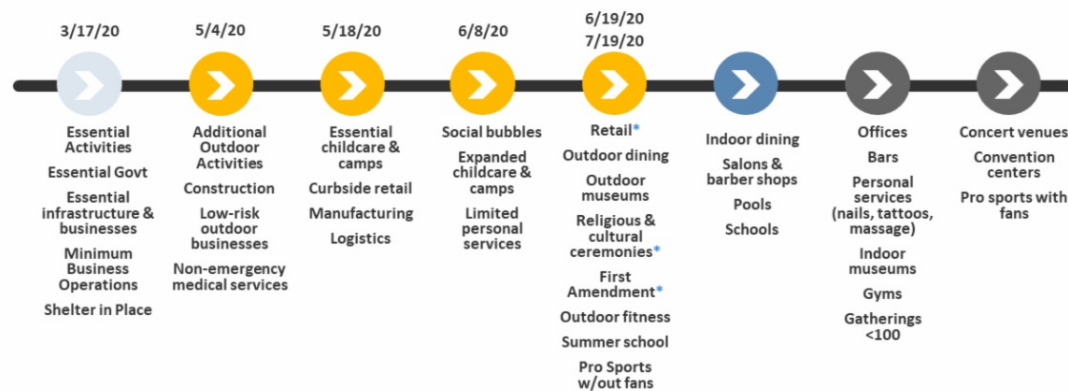
Our Agency's Department of Environmental Health (DEH) is conducting on-site routine food facility inspections, prioritizing sites that are open and providing outdoor dining and alcohol service. DEH is finding that follow-ups are necessary as compliance with social distancing and face-covering is not satisfactory for employees and patrons, and most likely contributing to increases in positive COVID-19 cases.

If everyone were to wear face coverings, we could get this pandemic under control in 6 weeks. Please model and help others with this simple, critical, and effective preventive measure.

## Alameda County Reopening Plan

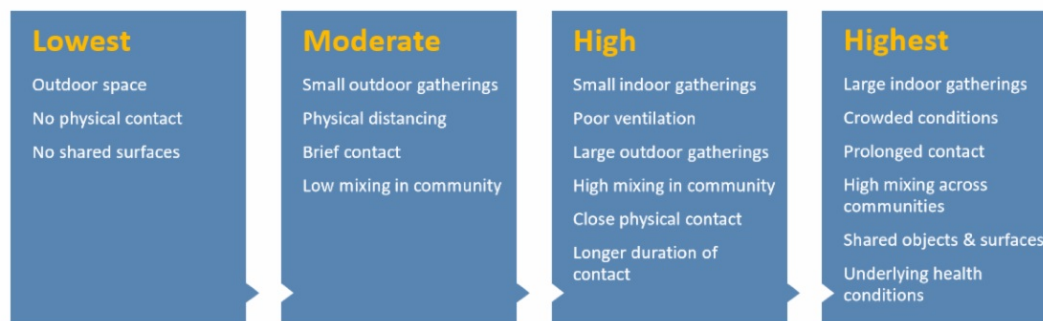
Added to the State's Monitoring List on 7.12.20, activities with \* [subject to restrictions per State Orders](#)

Variance approved on 7.15.20, and reopening remains paused due to continued elevated disease transmission and State restrictions



Face Coverings, Physical Distancing, and Site Specific Protection Plans Required – Stay in your Community

## COVID-19 Risk



LOWER RISK BY WEARING FACE COVERINGS, PHYSICAL DISTANCING & AVOIDING CROWDS

## Progress on COVID-19 Indicators

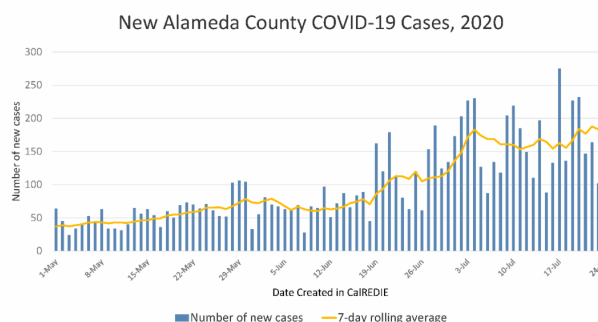
The rate of new cases appears to be stabilizing, and hospitalizations have continued to increase, again reaching new highs on July 28. We are conducting about 4,000 tests per day, exceeding the goal of conducting 3,100 tests per day. The percentage of people hospitalized and Covid-19 positive has increased to 9.1% compared to 6.3% last week but is still below the goal of 50%. Hospital capacity has dropped to 36% of our inpatient beds (from 47% last week), and 100% of our surge beds remain available. Health facilities continue to make significant requests for PPE from the county. Indicator progress has been updated accordingly.

Alameda County COVID-19 Indicators					
Updated 7.28.2020					
Indicator Movement ■ (-) ■ ■ ■ ■ ■ ■ ■ ■ ■ ■ (+)					
	Cases & Hospitalizations Flat or Decreasing	Sufficient Hospital & Surge Capacity	Sufficient Testing Capacity	Sufficient Disease Containment	Sufficient PPE
Indicator Status	■ ■ ■	■ ■ ■ ■ ■	■ ■ ■ ■ ■	■ ■ ■	■ ■
Trends & Data	<ul style="list-style-type: none"> <li>• 10,392 cases</li> <li>• 213 hospitalized</li> <li>• Rates of new cases stabilizing</li> <li>• Hospitalizations increasing</li> </ul>	<ul style="list-style-type: none"> <li>• 843 (36%) inpatient hospital beds available</li> <li>• 1,221 (100%) surge beds available</li> </ul>	<ul style="list-style-type: none"> <li>• 7-day avg 3,234 tests/day (goal 3,100/day)</li> <li>• 5% overall positive</li> <li>• 75% of residents w/in 30min drive to site</li> </ul>	<ul style="list-style-type: none"> <li>• 130 case investigation &amp; contact tracing staff (goal 300)</li> <li>• 1,020 isolation/quarantine rooms (goal 1,203)</li> <li>• Special settings teams: LTCF, Outbreaks, Jail, Encampments</li> </ul>	<ul style="list-style-type: none"> <li>• Continued PPE requests</li> </ul>

## Trends in Cases and Hospitalizations

Case rates appear to be stabilizing and hospitalization rates increased again over last week with new highs reported on July 28. We hope the stabilization in case rates lead to a stabilization in hospital rates. Our goal is for cases to be flat or decreasing. As of July 28, there were:

- [10,633 reported cases](#) of COVID-19 and 181 deaths. This represents 11 deaths per 100,000 people, compared to 22.3 deaths per 100,000 people in California State overall.
- [113.1 new cases per 100,000 people](#) over 14 days, which is up from the case rate of 103 last week, and above the 100-case threshold for being on the State Monitoring List. The goal is to have 24 or fewer new cases per 100,000 people.
- [213 hospitalized patients](#) (new high), including [64 ICU patients](#) (highest was 65 on 7/27) with confirmed Covid-19.



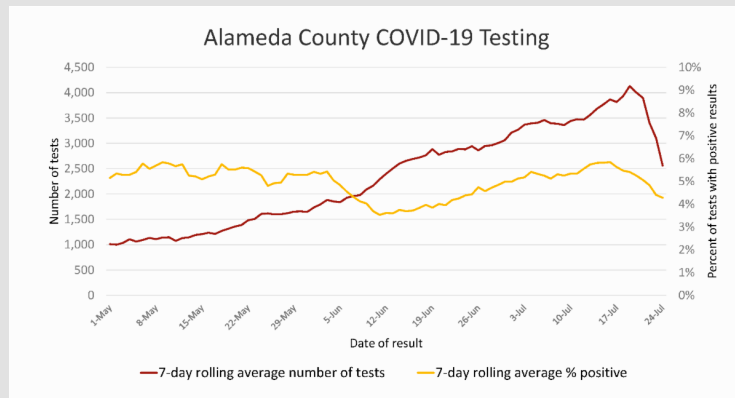
As of July 27, the county level transmission rate (Re, or effective reproductive number) is estimated to be 1.05 using a composite of 6 models on the [California COVID Assessment Tool \(Cal-CAT\)](#). This means each person in Alameda County who

has COVID-19 will transmit the virus to 1.05 other people on average. When the  $R_e$  is greater than 1, cases increase exponentially. The California State's  $R_e$  is 1.02.

Our goal is to reduce the transmission rate ( $R_e$ ) to less than 1. To do so, we need to improve the use of preventive measures including face coverings and social distancing in all settings outside our households. Please help us get the message out to communities with the [Mask On, Alameda County](#) campaign.

## Testing

We are conducting about [4,000 tests per day](#) and have exceeded our goal of 3,100 tests per day. The positivity rate remains at 5%, within our goal of having an 8% or lower positivity rate.



We continue to expand access with new sites launching soon in Hayward at Glad Tidings Church, and in Oakland (26th & MLK) to serve African immigrant communities. The County is planning to designate priority days at community testing sites for those who have symptoms, nursing home staff, and other essential workers who require immediate testing to alleviate long wait times for testing appointments.

Updated testing locations and appointment links are posted the [COVID-19 testing webpage](#) and searchable in this [interactive map of COVID-19 services](#) (click to filter for COVID-19 testing). 10 sites offer free tests for any community member with symptoms and all essential workers, people who have protested, and those at higher medical risk regardless of symptoms.

The County is contracting with three local and California-based labs that guarantee testing results within 72 hours. With long delays in test results, providers can support critical disease containment by:

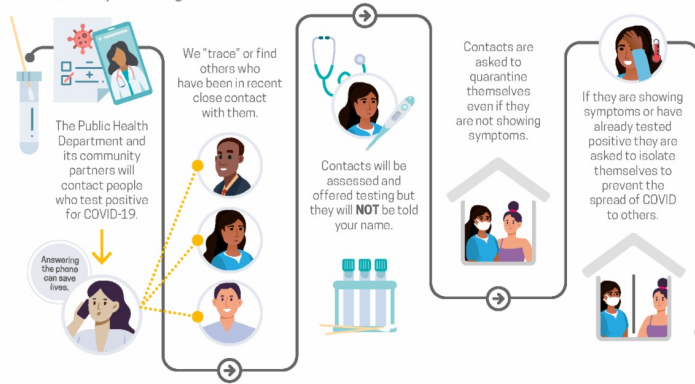
- distributing [isolation orders](#) for all people getting tested,
- reminding people to stay home until they get test results and to pick up calls from the health department, and
- submitting full names, addresses, dates of birth, and phone numbers for all positive case reports.

## Case and Contact Investigation, Isolation and Quarantine

We currently have more than 130 case investigators and contact tracers with a goal to reach 300 in the fall. The teams have fully transitioned to the state's Cal Connect contact tracing



Testing and tracing are completely private! You will not be asked for your social security number or your immigration status.



#### Stay Informed

Please click to view, "How COVID-19 Can Spread in the Community."  
Call 2-1-1 or text "COVID19" or "coronavirus" to 211211 to receive general information.  
Check Public Health Department's website: [www.acphd.org](http://www.acphd.org)  
Subscribe to our social media



Alameda County  
Health Care Services Agency



Alameda County Public Health Department  
Creating Healthy People in Healthy Communities

system.

Contact Tracing Request for Proposals (RFP) will be released in early August. La Clínica, West Oakland Health Center, Roots Community Health Center, and Tiburcio Vasquez Health Center have immediate action contracts to provide support for case investigations and contact tracing in the communities with the highest rates of COVID-19. The first team through these contracts started case investigations this week, and all

immediate action teams are expected to start by mid-August.

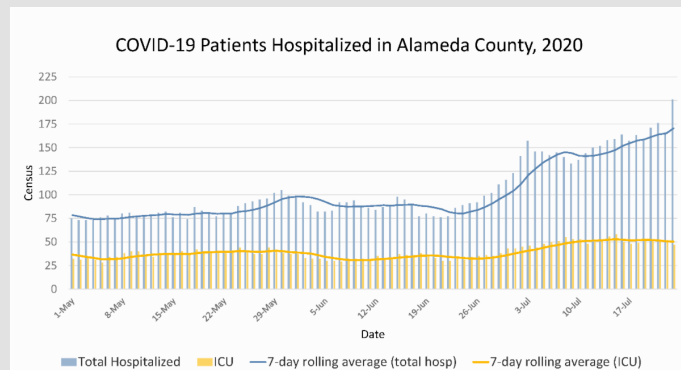
Project Roomkey continues to expand and provide isolation/quarantine housing for people living in crowded conditions or are experiencing. There are currently 1,020 rooms in operation, which is 85% towards our goal of 1,203 rooms. Another 100 rooms have been approved and 126 more rooms are being negotiated, which would bring our total to 1,246 rooms, exceeding our goal. Alameda County has committed to providing permanent housing for 400 people from Safer Ground hotel sites by September 3.

Clearance for work and transfers: Alameda County does *not recommend re-testing* to release patients from isolation in community settings, hospital settings, and for health care personnel to return to work. A time- and symptom-based strategy is recommended instead. This is because people continue to shed detectable SARS-CoV-2 RNA (resulting in a positive test) but are no longer infectious.

## Hospital Capacity and Surge Planning

As of July 28:

- 9.1% of hospital patients in Alameda County were confirmed COVID-19 positive, higher than 6.3% last week, and 3.3% a month ago but still within our goal of 50% or less.
- 19% of the patients in ICU beds were confirmed COVID-19 positive, up from 12% last week.
- 36% of the 2,343 total inpatient hospital beds and 35% of the 330 ICU beds were available, and 100% of the 1,221 surge beds were available.



Opportunities to help:

- California Health Corps - Use this link to register for the California Health Corps,



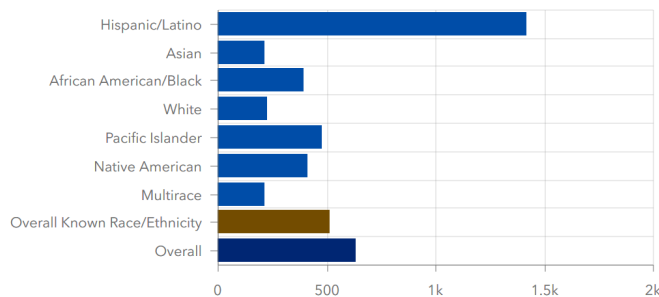
which is a State program for trained medical and healthcare workers to sign up to assist in the COVID-19 response.

- [Medical Surge Volunteer Sign Up](#) - Use this link to register as a volunteer with the County of Alameda to assist with the COVID-19 response. Medically and non-medically trained volunteers will be needed. [Click here for more information.](#)

If your facility needs COVID-related supplies or staffing, please go to the [Emergency Medical Services website](#) to [request PPE](#), [request staffing](#), and [request testing supplies](#).

## Health Disparities and Equity

Alameda County Total Case Rates per 100,000 Population by Race/Ethnicity

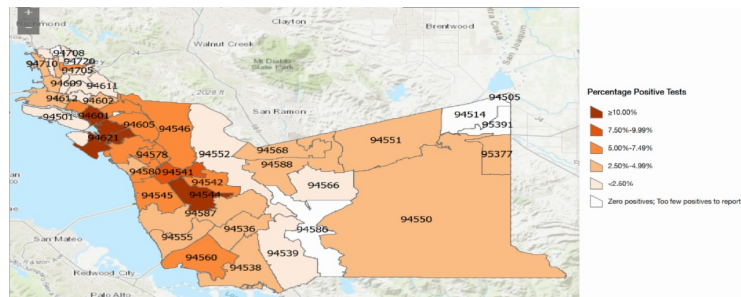


Updated [race and ethnicity data](#) as of July 28 show persistent disparities. COVID-19 diagnosis among Latinx people is 6.3 times the COVID-19 case rate of White people, down from 6.7 times last week.

The death rate among Latinx people is 1.5 times that of

Whites. Black/African American people have 1.5 times the case rate of Whites, down from 1.8 last week. The death rate among Black/African Americans is now 2.2 times the death rate of Whites, compared to 2.4 times a week ago. Native Americans have 1.8 times the rate of cases compared to Whites. Pacific Islanders have 2.1 times the case rate compared to Whites.

Covid-19 test positivity rates remain highest for people living in the Fruitvale (11%), East Oakland/Coliseum (15-17%), and Hayward (10%) zip codes, comparing to a 5% positivity rate overall, showing a disproportionate impact in communities of color.



We continue efforts through our Health Equity Team and participation in the [Racial Disparity Task Force](#) to address the persistent and urgent need to address racial and socioeconomic inequities in workplace safety, education, and access to precautions, rapid access to testing, safe isolation, quarantine, and medical care.

Did you receive the update from a colleague? [Click here to join our mailing list.](#)

Weekly Update PDF Version



Follow us @Dare2BWell