

CORONAVIRUS UPDATES

Get the latest news from our Public Health Department

Week of January 10

Alameda County Health Care Services Agency Update

Please share with your networks

We begin this new year with a reflection on our Agency's 2-year milestone for pandemic response that began with the activation of our Department Operations Center on January 21, 2020. While we are deeply saddened by the loss of life throughout this pandemic, the situation would have been much worse had we not joined together to slow and prevent the spread of COVID. The magnitude of our response efforts would not have been possible without the support we continue to receive in partnership for the health of our community.

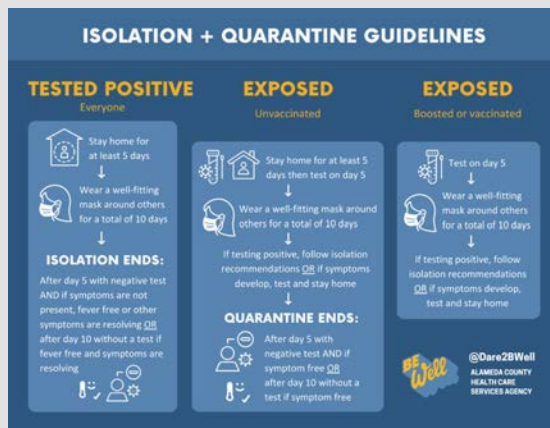
This week, we passed the **80% milestone** for [fully vaccinated](#) residents across Alameda County. Last week we passed the **50% milestone** for [children ages 5 to 11](#) in Alameda County having received at least one dose of vaccine and **39%** (nearly 60,000) of these children were fully vaccinated. We are grateful for all partners helping to keep our children and communities healthy. (See *Alameda County Children below.*)

As our Agency continues building community capacity, we applaud the Alameda County Board of Supervisors approval of awards totaling [\\$12.2 million to 11 community-led Coalitions](#) to expand COVID-19 vaccine access and build upon community resiliencies. This coalition model reflects the tireless efforts of our late Supervisor Wilma Chan to prioritize underserved communities in Alameda County. The coalition model developed by our Public Health Department builds on and extends Supervisor Chan's work. We are thankful for this expansion of community-based support and look forward to additional partners for pandemic response.

As we approach the birthday of Martin Luther King, Jr., we remain mindful of his words, *"Of all the forms of inequality, injustice in healthcare is the most shocking and inhumane"* and committed to our Agency's mission to *Achieve health equity by working in partnership to provide high quality services, foster safe and healthy communities, and promote fair and inclusive opportunities for all residents.*

You'll find this week's Alameda County Board of Supervisors [update](#) on our website. We appreciate your partnership and ask that you share this newsletter with others.

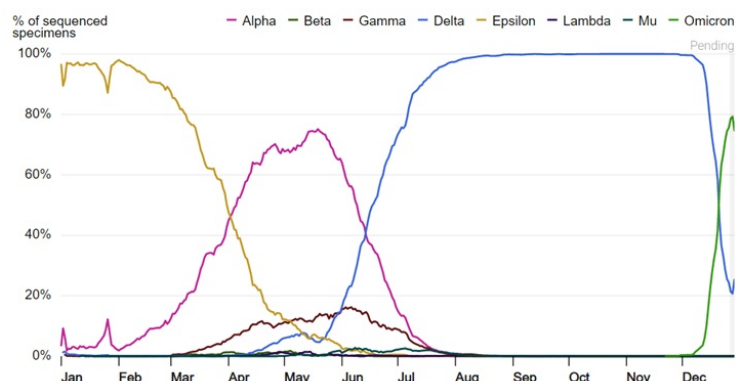
Isolation and Quarantine



Alameda County's isolation and quarantine orders are now aligned with the [State's guidance](#). The order includes 5-day isolation and quarantine for the public and is aligned with guidance for [workers in health care](#) settings and licensed residential facilities. Additional guidance for staff and residents in corrections and detention facilities and shelters is also included. Local K-12 schools and other youth settings should continue to follow the [CDPH's isolation and quarantine guidance for those settings](#). As a reminder, businesses governed by [Cal/OSHA's COVID-19 Prevention Emergency Temporary Standards](#) should review their guidance for workplace settings.

Omicron Variant

Hospitalizations are increasing, although not yet exceeding our peak from last winter. We understand approximately half of these hospitalizations may be people with COVID who are hospitalized for other reasons (heart condition, severe injury) and not for COVID. Emerging evidence suggests that those infected by the Omicron variant experience less severe disease and [vaccines](#), including [boosters](#), continue providing protection against hospitalization and death. As of [January 5, 2022, over 90%](#) of [sequenced](#) samples in California show Omicron as the dominant strain.



Alameda County Children

Last week, the FDA authorized and the CDC recommended boosters for everyone 12 and older. Everyone ages 12 and older is now eligible for a [COVID-19 booster](#) if it's been 5+ months since completing a primary Pfizer or Moderna series, or 2+ months since a J&J vaccine. A third vaccine dose for children ages 5-11 compromised immune systems were also authorized and recommended by these agencies.

Keeping students in classrooms is a top priority for the State and Alameda County. When there is evidence of in-school transmission in multiple classrooms, the Public Health Department works with schools to determine appropriate next steps. A temporary classroom closure



may be taken into consideration on a case-by-case basis if there is evidence of in school transmission, and only as a last resort after all available resources have been exhausted to preserve in-person education. The benefits of in person learning to students’ educational outcomes, mental health, and social-emotional development are clear.

Over 50% of Alameda County’s 5 to 11-year-olds have received at least one dose of vaccine. In late October 2021, our COVID Division partnered with the Alameda County Office of Education and our Center for Healthy Schools and Communities worked together to plan the administration of 5 to 11-year-old pediatric vaccines with our school districts that showed the highest need based on census-tract vaccination data. Prior to the winter break, nearly 2,500 (2,425) pediatric first doses were administered by working with school districts throughout Alameda County, including San Leandro Unified, San Lorenzo Unified, Newark Unified, Hayward Unified, and Oakland Unified.

Sharp Increases in COVID Cases

The increase in COVID-19 and flu cases reminds us to remain vigilant and take steps to lower risk:


- Keep gatherings small, short and, if possible, outdoors.
- When gathering inside, ventilate well. Open doors and windows, run HVAC systems, and install high-quality air filters.
- Everyone must wear a mask in indoor public settings.
- Vaccination and boosters continue to provide strong protection.
- If possible, get tested to know your COVID-19 status before gathering with friends and family. Plan to test 3-5 days after gathering or traveling too.
- Stay home if you are sick especially if you have a fever or test positive, even if you use an at-home test.
- Upgrade your mask. An effective mask has both a good fit and good filtration. A well-fitted mask has no gaps between the face and mask, such as above the nose or sides. With gaps, air that virus particles can easily leak in or out around the sides of the mask.
- A good fit forces the air that you breathe to go through the mask and be filtered. Get the most out of your masking.





Masking Metrics

In alignment with the State's current universal masking mandate, Alameda County will not lift the local masking mandate before the State lifts its requirements even if the local masking metrics below are met sooner. Alameda County will begin using its metrics again after the State has lifted its

Which masks provide the best protection ?

Good

 Fabric mask with 3 or more cloth layers

Better

 Double mask (surgical + cloth mask)

Best

 N95
 KN95
 KF94

BE Well
 ALAMEDA COUNTY HEALTH CARE SERVICES AGENCY @Dare2BWell

mandate. At that time, state and federal masking rules will continue to apply for setting with more restrictive requirements.

Alameda County COVID data can be found on the [website](#).

Emergency Medical Services Redesign Community Forum

EMS REDESIGN COMMUNITY FORUM

JOIN US ONLINE
 Tuesday, January 18
 5:30 to 7 p.m.

Alameda County Health Care Services Agency



REGISTER TODAY

Join us online on Tuesday, January 18, from 5:30 to 7 pm, for our Health Care Services Agency Emergency Medical Services (EMS) system redesign. A Q&A session will follow the panel discussion. Join us to contribute your vision for EMS services in Alameda County. You can

[submit questions](#) in advance to help shape the forum. [Register](#) today!

Click here to join our mailing list.

COVID-19 Update PDF Version

