

Board of Supervisors COVID-19 Update

July 27, 2021



Alameda County
Health Care Services Agency



Alameda County Public Health Department
Celebrating Healthy People in Healthy Communities

Agenda

- Data
- Vaccine Updates

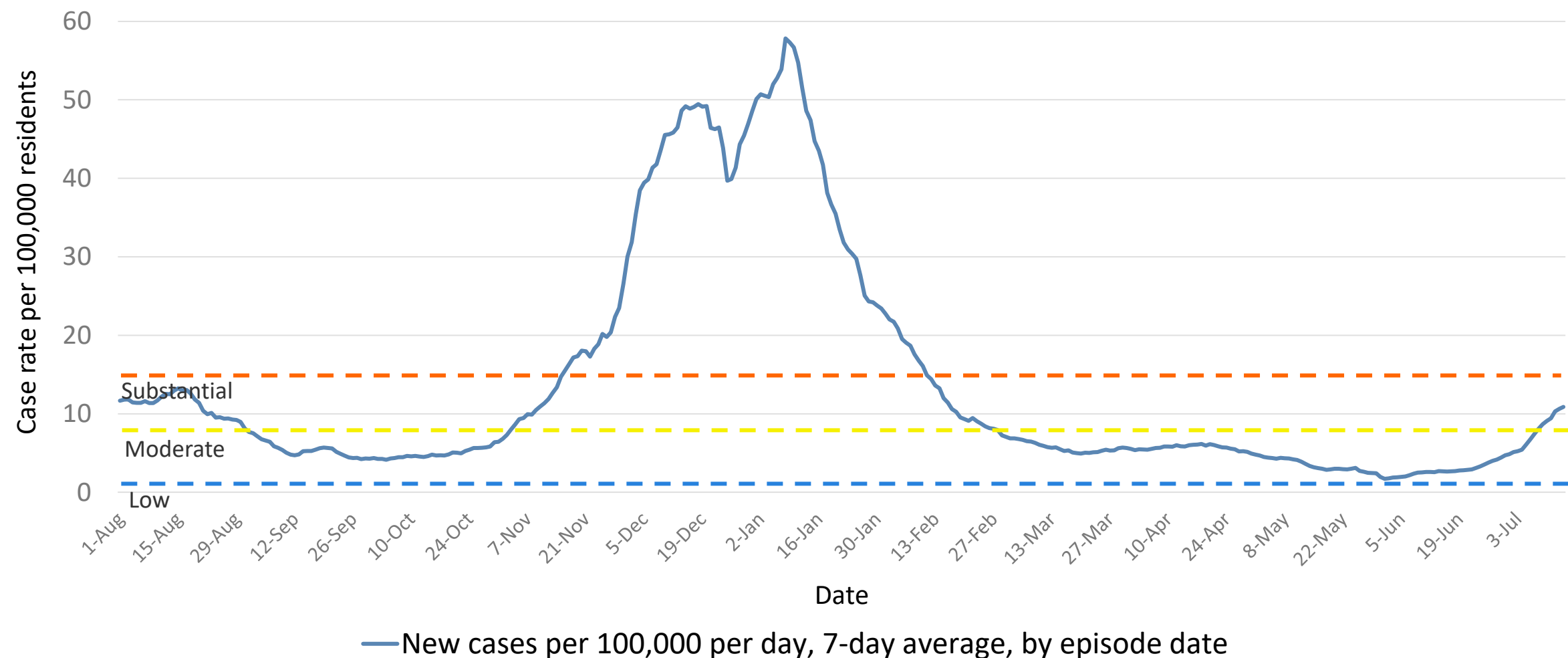
Data

Epidemic Data Key Points as of 7/22

- Daily case rate is 10.9 per 100,000
 - Averaging over 300 cases reported daily – 330 cases on 7/23
- Test positivity is 7 %
 - HPI first quartile: 4.2 %
- Post-vaccination cases are being detected - to be expected.
- Hospitalized COVID cases 120; ICU 37
- Testing increased 25% over the last 2 weeks to ~6,200 per day



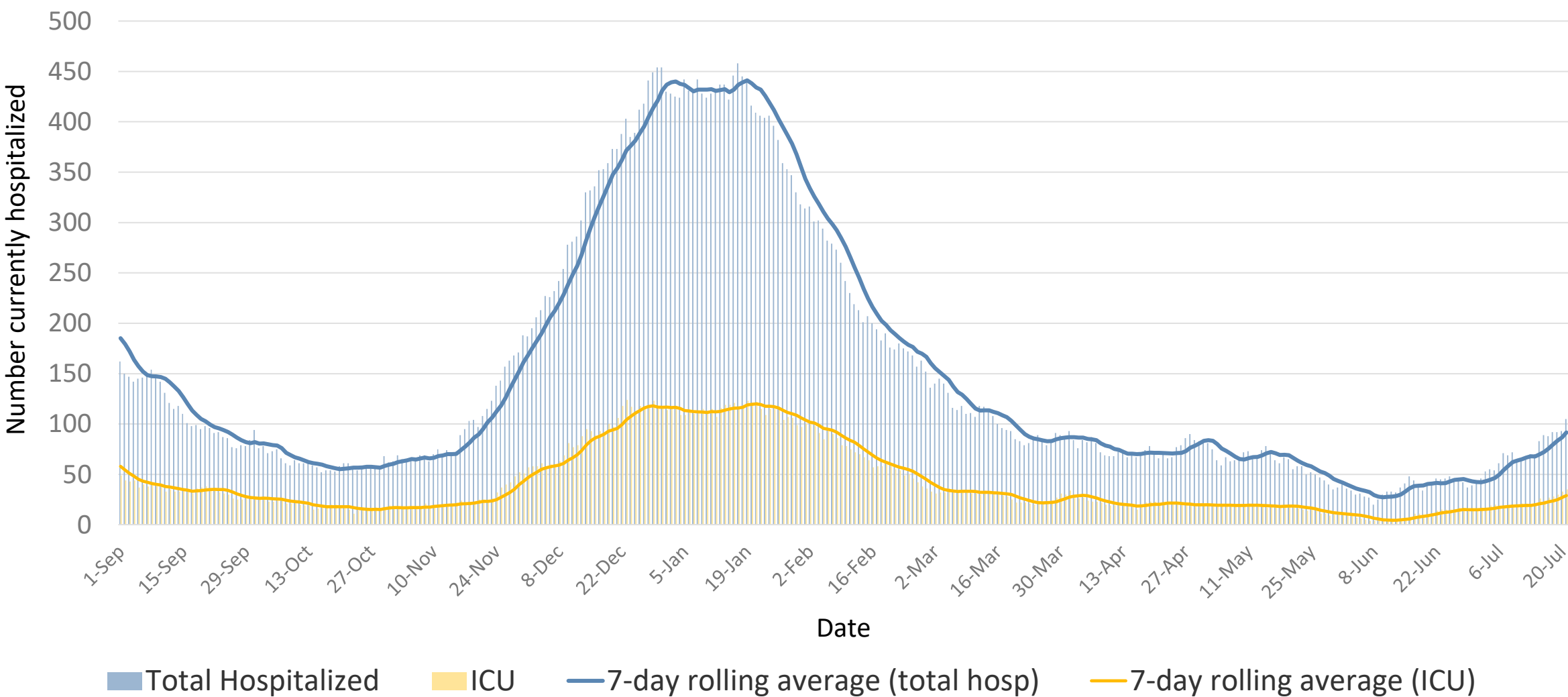
Alameda County COVID-19 Daily Case Rate



Includes City of Berkeley

Source: CalREDIE Data Distribution Portal download July 22, 2021

COVID-19 Patients Currently Hospitalized in Alameda County



Source: California Department of Public Health

Vaccine updates



Alameda County COVID-19 Vaccination Dashboard

% of population >= 12 Years

% >= 12 Years with at Least One Dose

83.8%

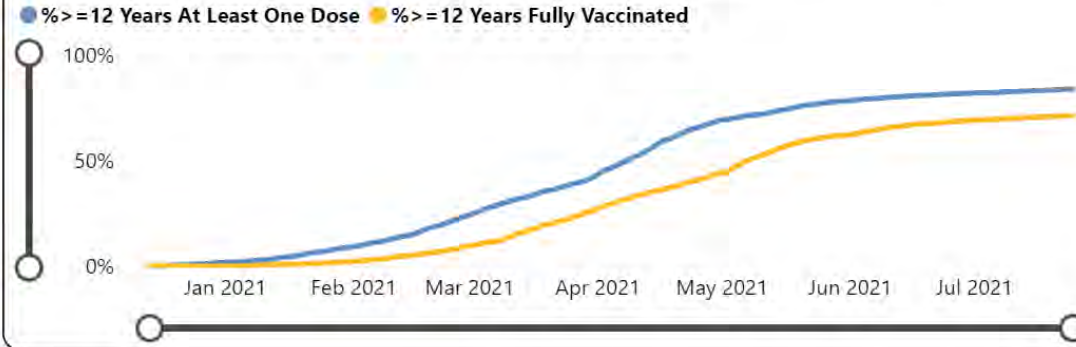
See Counts

% >= 12 Years Fully Vaccinated

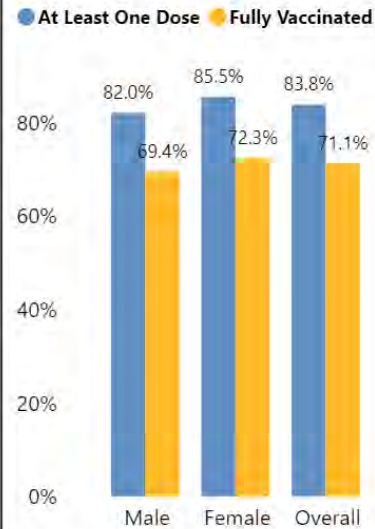
71.1%

See Percentages

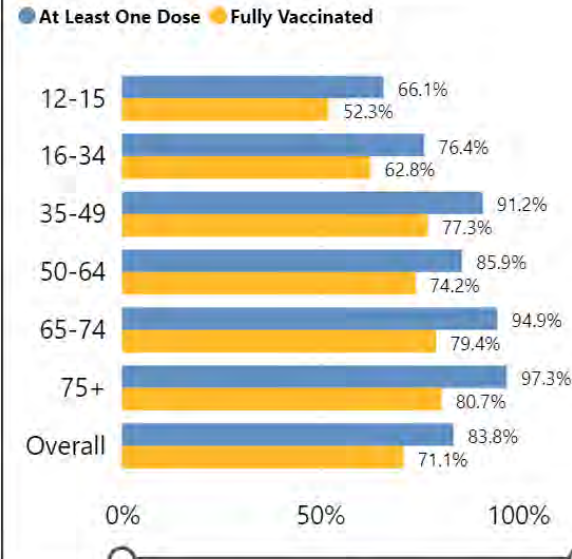
Alameda County Cumulative Percentage of Vaccine Doses



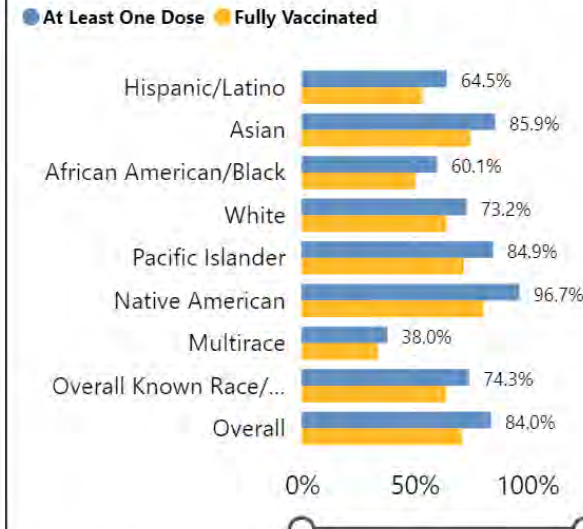
Doses by Gender (% of population >= 12 years)



Doses by Age Group (% of population)



Doses by Race/Ethnicity (% of population >= 12 Years)



Place	At Least One Dose	Fully Vaccinated
Alameda	89.3%	76.8%
Albany	97.1%	81.6%
Ashland	71.9%	58.9%
Berkeley	80.9%	69.0%
Castro Valley	87.7%	73.5%
Cherryland	74.9%	61.7%
Dublin	85.4%	72.3%
Emeryville	84.4%	70.4%
Fairview	79.9%	68.6%
Fremont	91.0%	77.6%
Hayward	81.8%	69.4%
Hayward Acres	64.2%	56.8%
Livermore	75.7%	64.9%
Newark	82.6%	72.1%
Oakland	80.9%	67.8%
Piedmont	99.1%	85.7%
Pleasanton	88.0%	75.4%
Remainder of County	65.5%	56.3%
San Leandro	82.9%	70.8%
San Lorenzo	79.5%	69.1%
Sunol	83.6%	72.2%
Union City	84.7%	72.5%

Notes and disclaimers: This dashboard is populated with data from the California Immunization Registry (CAIR), the State's electronic immunization information system. Vaccination records were accessed via CAIR's Snowflake platform. Information currently available in CAIR for Alameda County may not include all vaccinations among county residents. Dashboard totals include vaccinations of residents of the City of Berkeley, which is a separate health jurisdiction. Total doses include all doses given; for some of these the dose number is unknown. As of May 7, 2021, our data will reflect a correction in the calculation of the total population that is 16 and older in Alameda County. That population is larger than the original estimates.

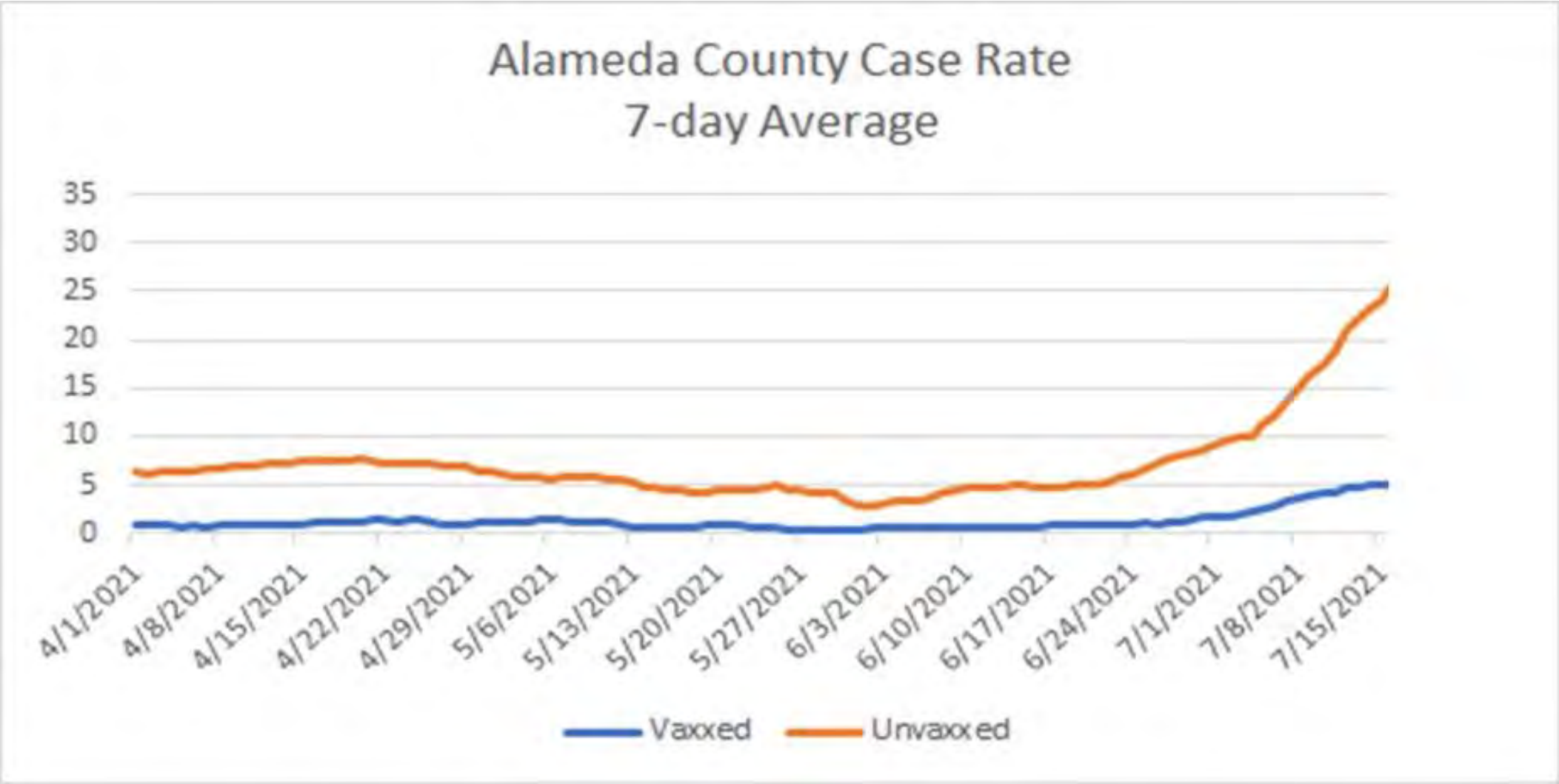


Alameda County
Health Care Services Agency

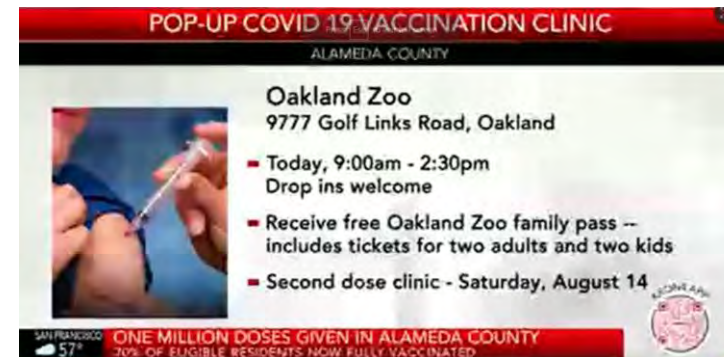
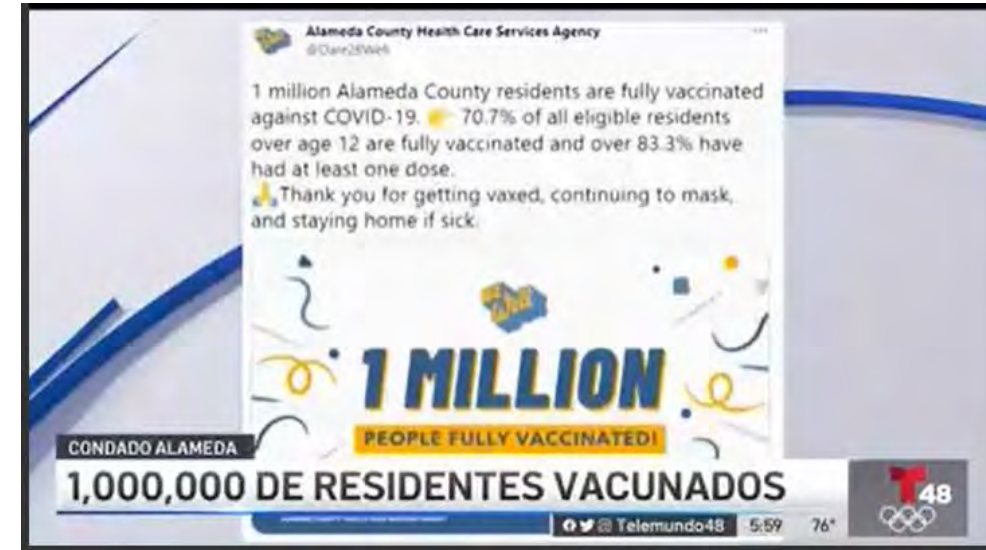


Alameda County Public Health Department
Celebrating Healthy People in Healthy Communities

Cases among vaccinated vs unvaccinated people



Alameda County milestone reached



Continued efforts at myth-busting



FACT: COVID-19 vaccines were tested in large clinical trials that included people of different ages, races, and ethnicities, as well as those with pre-existing medical conditions, to make sure the vaccines are safe and effective for everyone. Everyone who participated in the vaccine's trials(as early as March 2020) were closely followed after receiving their vaccine and reported no long-term effects. Click [here](#) to learn more about the different vaccines and their clinical trials.

7/26/21 California Mandate to Increase Vaccination

- California released first Statewide policy in the U.S. yesterday.
- **Employees in the following settings are required to show proof of vaccination or agree to mask/PPE and be tested at least weekly**
 - State employees, effective 8/2.
 - Homeless shelters, retirement homes, jails/prisons, effective 8/9.
 - Health care settings, including hospitals, skilled nursing facilities, clinics, and doctors' offices, effective 8/9.
- Congregate settings and health care settings have until 8/23 to come into compliance.



ACPHD Stationary POD Vaccination Sites

148,437 doses administered at PH run PODs (updated 7.24)

Recent Stationary Sites:

- Allen Temple: 1,363 (+176)
- Old Decoto School: 1275 (+44)
- Weekes Community Center: 208 (+62)

Schedule Week of 7.26:

Old Decoto School (Union City)

- 7/30: 4:30pm-7:30pm

Allen Temple Baptist Church (Oakland)

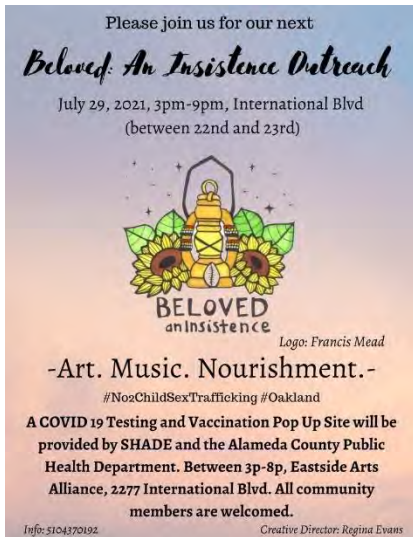
- 7/31: 10am-2pm

Weekes Community Center (Hayward)

- 7/31: 10am-2pm



Mobile/Pop-up Vaccination sites 7/26/21- 8/1/21



Oakland

- **7/27 & 7/31: St. Vincent de Paul Dining Room**
Open POD, 18+ drop-in only
- **7/28: East Oakland Community Projects**
Open POD, 18+ drop-in only
- **7/29: SHADE Movement at Eastside Art Alliance**
Open to everyone 12+
- **7/29: Mount Zion Missionary Baptist Church**
Open to everyone 12+
- **7/31: Order of Malta at the Cathedral of Christ the Light**
Open to everyone 12+
- **7/31 Mount Zion Missionary Baptist Church**
Open to everyone 12+

Berkeley

- **7/27: Dorothy Day House**
Open POD, 18+ drop-in only

Dublin

- **7/28: Dublin Senior Center**
Open to everyone 12+

Alameda

- **7/29: Will C. Wood Middle School**
Open to everyone 12+

San Leandro

- **7/31: California Children's Services**
Open to everyone 12+



Thank you

Questions