

Alameda County Board of Supervisors COVID-19 Update

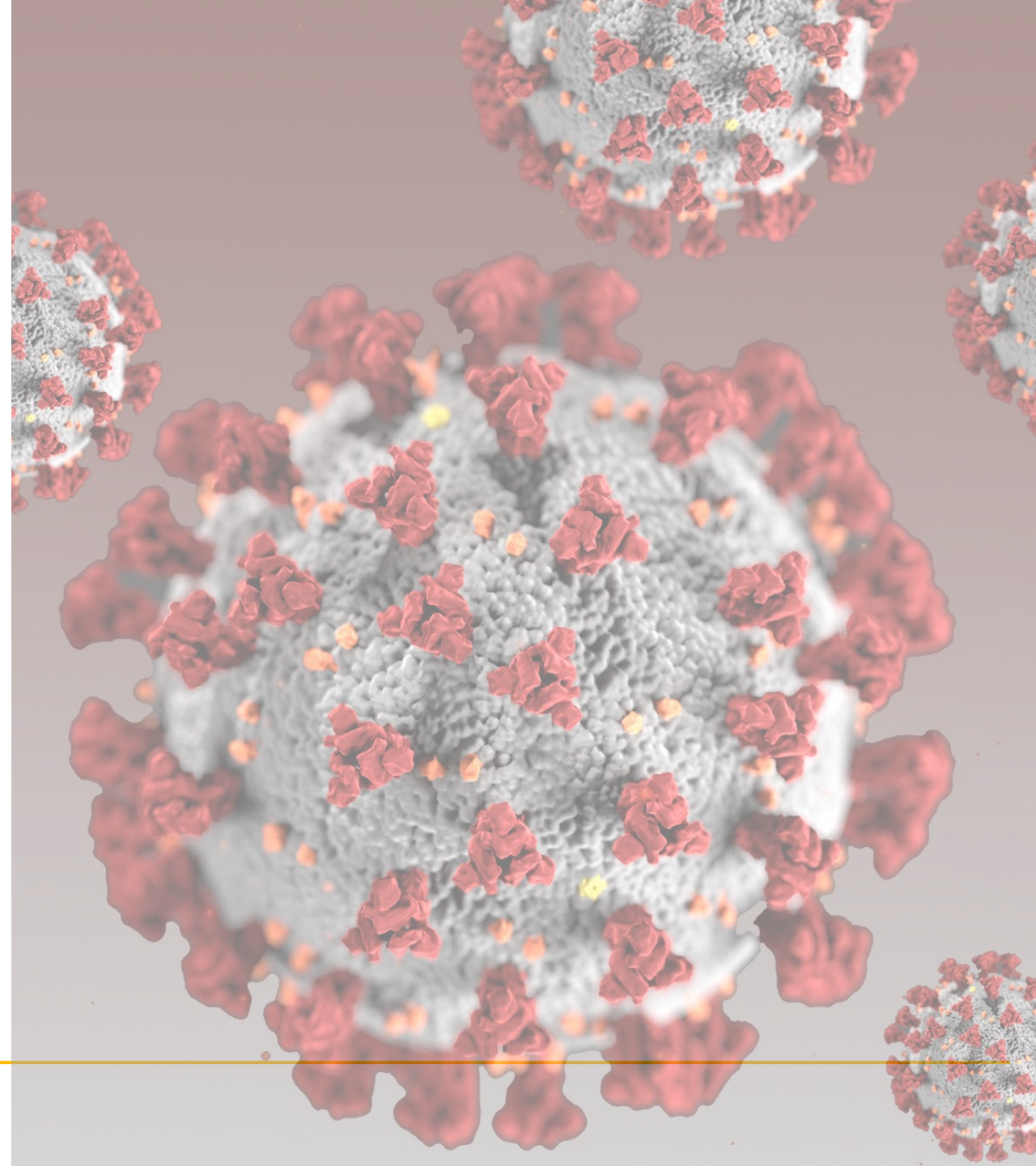
July 20, 2021



Alameda County
Health Care Services Agency



Alameda County Public Health Department
Celebrating Healthy People in Healthy Communities



Presentation Overview

Indoor Masking Recommendation

Data

Vaccination Updates

Outreach & Communications

Bay Area Health Officers Recommend Indoor Masking For All

- Alameda County joined seven other Bay Area counties in [recommending](#) that everyone, regardless of vaccination status, wear masks indoors in public places.
- Delta variant is now responsible for 58 percent of new infections across the country.
- Masking ensures easy verification that all unvaccinated people are masked indoors and as an extra precautionary measure for all.
- Fully vaccinated people are well-protected from infections and serious illness due to known COVID-19 variants including Delta variants.
- Vaccinating as many people as possible, as soon as possible, continues to be our best defense against severe infection.



FOR IMMEDIATE RELEASE:

July 16, 2021

Counties of Alameda, Contra Costa, Marin, San Francisco, San Mateo, Santa Clara, Sonoma, and the City of Berkeley Recommend Masking Indoors for Everyone as a Precaution Against Increased Circulation of COVID-19

Alameda County's reported new cases are averaging 110 per day and the daily case rate is now 6.7 per 100,000 and rising.

With cases of COVID-19 rising locally and increased circulation of the highly transmissible Delta variant, the Counties of Alameda, Contra Costa, Marin, San Francisco, San Mateo, Santa Clara, Sonoma, and the City of Berkeley recommend that everyone, regardless of vaccination status, wear masks indoors in public places to ensure easy verification that all unvaccinated people are masked in those settings and as an extra precautionary measure for all.

In June, the Delta variants comprised [43 percent of all specimens sequenced in California](#). The Centers for Disease Control and Prevention (CDC) noted that Delta variants are now responsible for [58 percent of new infections across the country](#).

Fully vaccinated people are well-protected from infections and serious illness due to known COVID-19 variants including Delta variants, and vaccinating as many people as possible, as soon as possible, continues to be our best defense against severe COVID-19 infection, and the harm it can do to our region. Vaccines are safe, effective, free, and widely available to everyone 12 and older.



Data

Epidemic Data Key Points as of 7/17

- Daily case rate is 9.9 per 100,000
 - Averaging over 200 cases reported daily – 242 cases on 7/14
- Test positivity is 2.1%
 - HPI first quartile: 4%
- Post-vaccination cases are being detected - to be expected.
- Hospitalized COVID cases 88; ICU 27
- Testing increased 5% over the last 2 weeks to ~5,100 per day



Increase in Cases Does Not Mean Vaccine Isn't Protective

Between January 01, 2021 and July 14, 2021 Statewide:

- Among 20.7 million fully vaccinated individuals, 14,365 post-vaccination cases (**0.069%**) have been identified.

Among the 14,365:

- 843 individuals identified as post-vaccination COVID-19 cases were hospitalized.
- And 88 people have died. However, it is unknown if the primary cause of death in these cases was COVID-19 or if there were other contributory or alternate causes.

Source: <https://www.cdph.ca.gov/Programs/CID/DCDC/Pages/COVID-19/Post-Vaccine-COVID19-Cases.aspx>



Alameda County COVID-19 Vaccination Dashboard

% >= 12 Years with at Least One Dose

82.9%

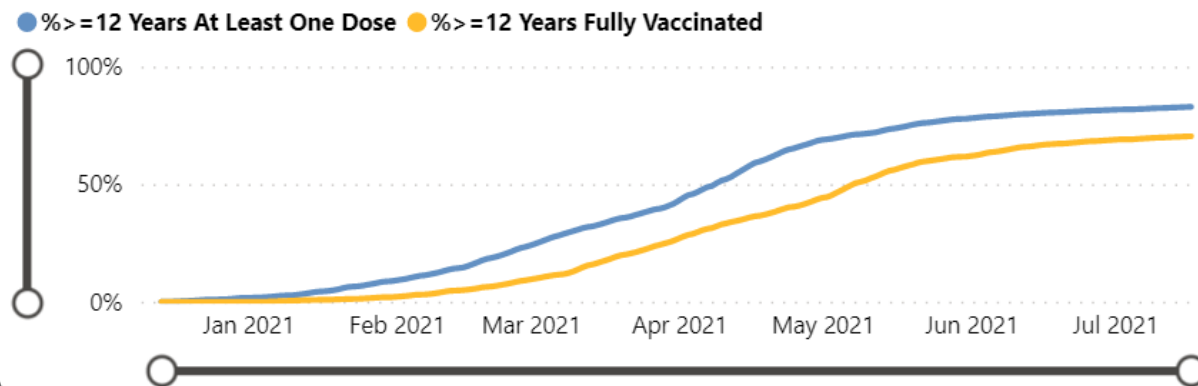
See Counts

% >= 12 Years Fully Vaccinated

70.4%

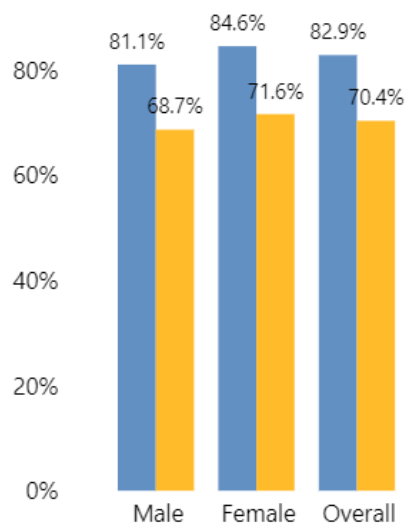
See Percentages

Alameda County Cumulative Percentage of Vaccine Doses



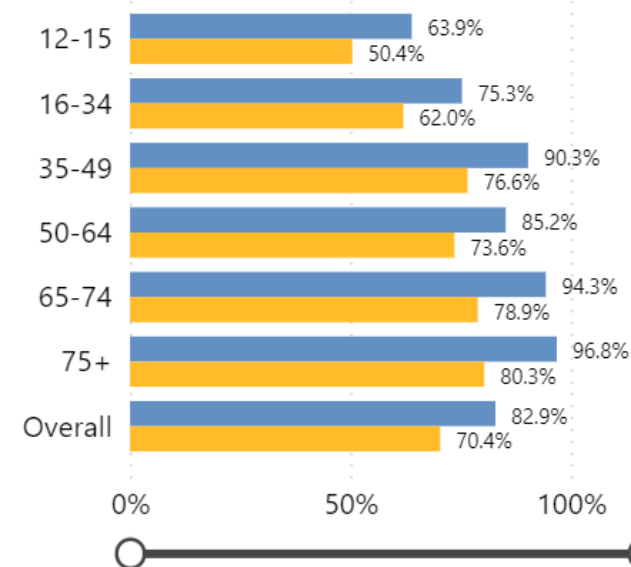
Doses by Gender (% of population >= 12 years)

● At Least One Dose ● Fully Vaccinated



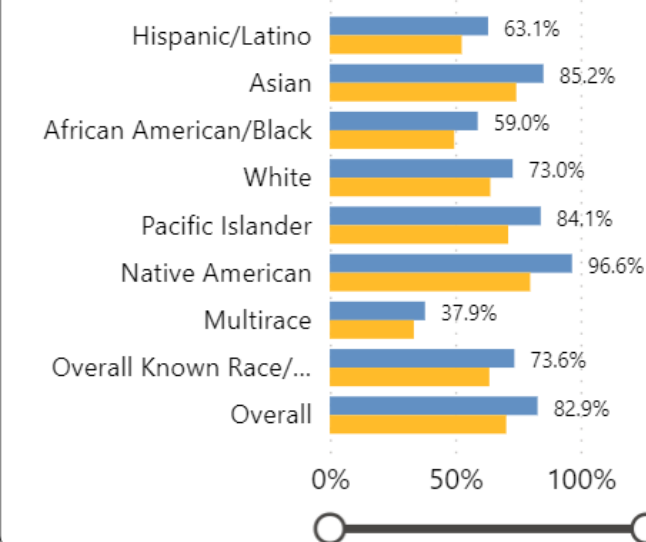
Doses by Age Group (% of population)

● At Least One Dose ● Fully Vaccinated



Doses by Race/Ethnicity (% of population >= 12 Years)

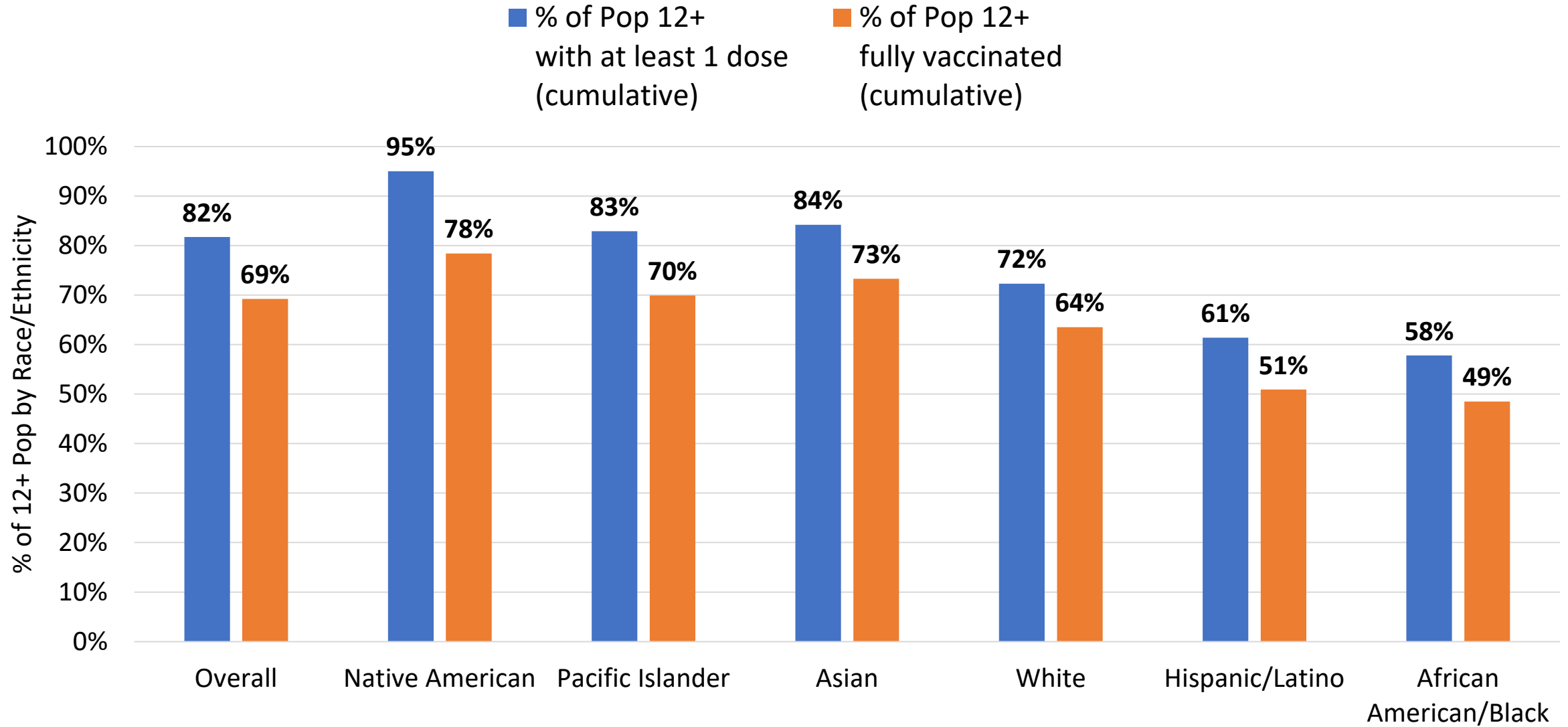
● At Least One Dose ● Fully Vaccinated



% of population >= 12 Years

Place	At Least One Dose	Fully Vaccinated
Alameda	88.6%	76.3%
Albany	96.8%	81.1%
Ashland	70.7%	58.0%
Berkeley	80.9%	68.6%
Castro Valley	87.2%	72.7%
Cherryland	74.1%	60.5%
Dublin	85.0%	71.7%
Emeryville	85.8%	69.8%
Fairview	80.0%	68.0%
Fremont	90.6%	76.8%
Hayward	82.2%	68.5%
Hayward Acres	68.4%	55.0%
Livermore	75.7%	64.2%
Newark	84.8%	71.3%
Oakland	81.3%	67.0%
Piedmont	95.0%	85.2%
Pleasanton	89.7%	74.7%
Remainder of County	69.9%	55.6%
San Leandro	85.5%	70.0%
San Lorenzo	82.4%	68.3%
Sunol	87.8%	71.4%
Union City	87.9%	71.7%

Vaccination Rates: Overall and by Race/Ethnicity



*Note: Rates by race/ethnicity only reflect vaccinated residents with known RE.
Does not reflect residents with unknown RE who got at least 1 dose (13%) or were fully vaccinated (11%).*

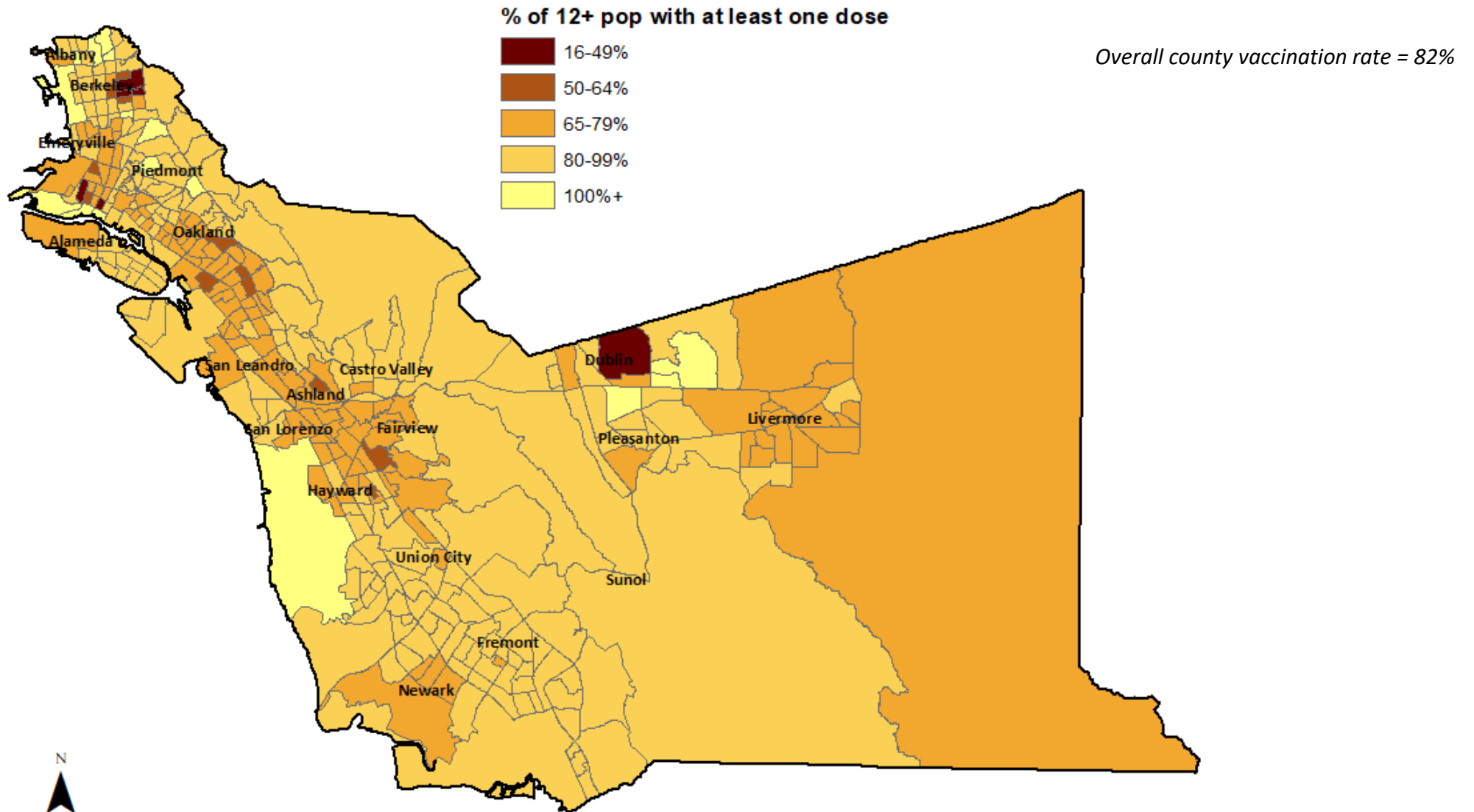
Vaccination Rates by Age Group & Race

Vaccination Rate (% 12+ Pop with at least one dose)							
Age Group	Total	Native American	Asian	Pacific Islander	White	Latino	Black
12-15	61%	78%	73%	40%	59%	42%	25%
16-34	74%	90%	79%	61%	68%	52%	45%
35-49	89%	100%	94%	99%	76%	70%	55%
50-64	84%	89%	85%	100%	66%	88%	69%
65-74	93%	100%	89%	100%	87%	67%	83%
75+	96%	100%	87%	100%	91%	62%	84%
12+	82%	95%	84%	83%	72%	62%	58%

Source: ACPHD, with data from Vaccination Dashboard & CAIR, thru 7.10.21

Vaccination Updates

Vaccination rate by census tract among 12+ (at least one dose)



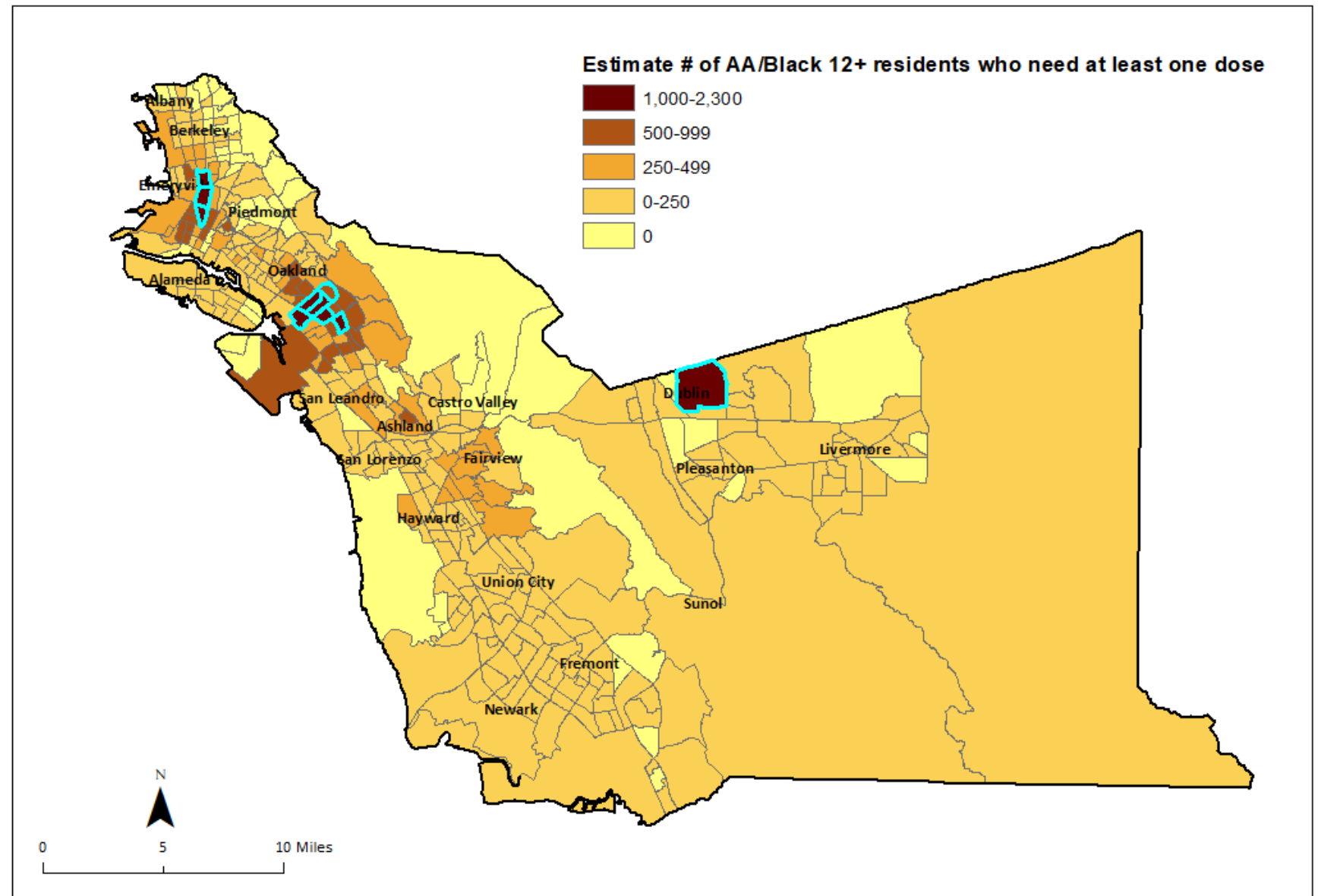
Priority Census Tracts for Reaching Unvaccinated AA/Black Residents

Top 10 census tracts with low AA/Black vaccination rates

(*<50% of AA/Black 12+ pop with at least one dose*)

and

Greatest number of AA/Black 12+ residents who need at least one dose
(*>900 AA/Black residents unvaccinated in each census tract*)



Priority Census Tracts for Reaching Unvaccinated Latino/a/x Residents

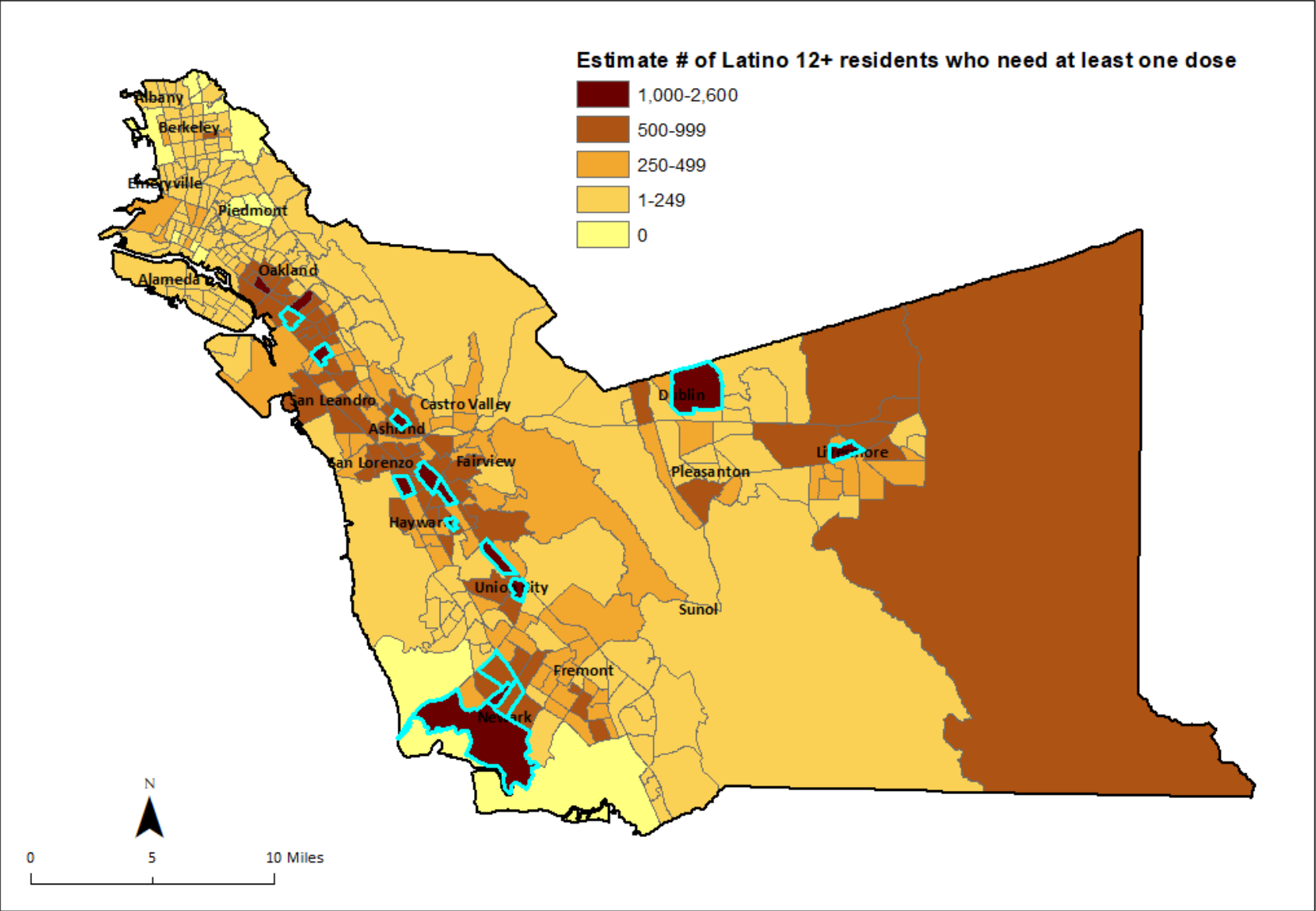
Top 15 census tracts with low Latino vaccination rates

(*<60% of Latino/Hispanic 12+ pop with at least one dose*)

and

Greatest number of Latino 12+ residents who need at least one dose

(*>900 Latino/Hispanic residents unvaccinated in each census tract*)



ACPHD Stationary POD Vaccination Sites

Recent Stationary Sites:

- Allen Temple: 1,187 (+81)
- Old Decoto School: 1231 (+68)
- Weekes Community Center: 146 (+63)

Stationary PODs Week of 7.19

Old Decoto School (Union City)

- 7.23: 4:30pm-7:30pm

Allen Temple Baptist Church (Oakland)

- 7.24: 10am-2pm

Weekes Community Center (Hayward)

- 7.24: 10am-2pm



Upcoming Mobile/Pop Up Vaccination Sites

Street Level Health Project



La Familia



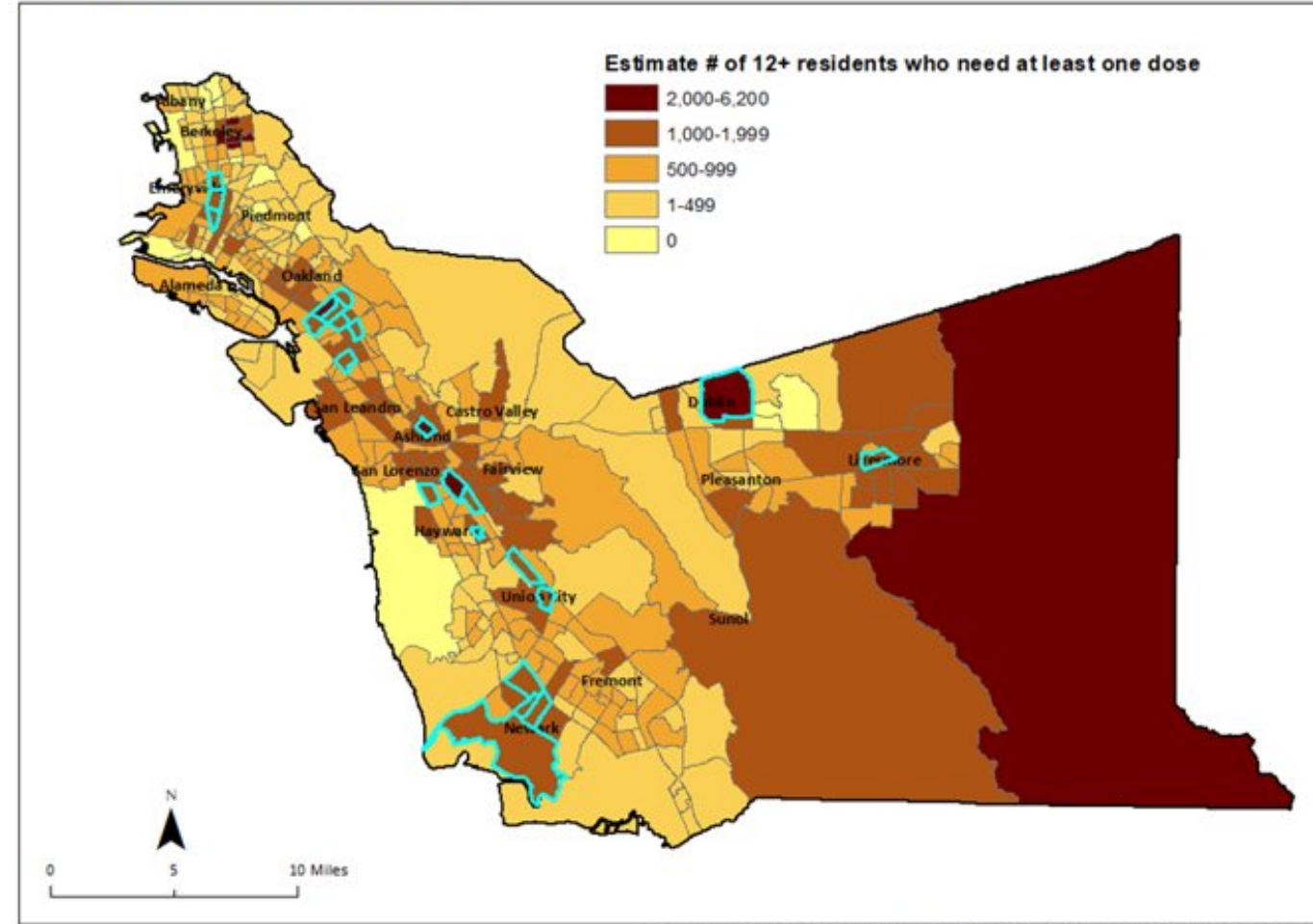
- Oakland
 - 7/19/21: Wood Street Encampment Raimondi Park (AC HCH POD)
 - Open POD, 18+ drop-in only
 - 7/20/21: High Street RV Safe Parking (AC HCH POD)
 - Open POD, 18+ drop-in only
 - 7/20/21: Parks Chapel African Methodist Episcopal Church
 - Open POD
 - 7/20/21: Head Start Down Town Oakland Senior Center
 - Open POD
 - 7/21/21: Oakland Housing Authority Lockwood Gardens
 - Open POD
 - 7/22/21: Head Start East Oakland Senior Center
 - Open POD
 - 7/23/21: Serenity House Oakland
 - Open POD, drop-in only
 - 7/24/21: Oakland Zoo
 - Open POD
- Oakland Coliseum
 - 7/19/21: A's Home Game
 - Open POD (incentive- 2 A's tickets)
 - 7/20/21: A's Home Game
 - Open POD (incentive- 2 A's tickets)
- Hayward
 - 7/20/21: New Hope Church Feed By Sheep (AC HCH POD)
 - Open POD, 18+ drop-in only
 - 7/21/21: BACS HEDCO Wellness Center (AC HCH POD)
 - Open POD, 18+ drop-in only
- Alameda
 - 7/22/21: Alameda Point Collaborative
 - Open POD

Outreach & Communications

Direct Outreach to Our Residents (DOOR) Program

- Launched this week
- Core component of HCSA's efforts to increase vaccination rates among Black and Brown residents, particularly those under 35
- Objective: 90,000 attempts at face-to-face engagement with residents of 23 Census Tracts (CT) that have:
 - 1) 900 or more unvaccinated residents, and
 - 2) vaccination rates of 60% or less for Latinos or 50% or less for African Americans.

23 Target Census Tracts



DOOR Methods

Relationship-centered conversations between residents:

- DOOR Outreach Workers belong to neighborhood-based community organizations and most live in the target tracts where they are working.

Residents are offered:

- A non-judgmental, low-pressure conversation with a neighbor.
- Up to date information about nearby vaccination opportunities and on the spot registration
- Information about the vaccine and COVID, delivered both by DOOR Outreach Workers and community-relatable health professionals via QR-code linked videos and websites
- Information about other services and assistance available, such as rental assistance, free food and diapers, etc



Venues and Outreach Teams:

Venues:

- Door to door (Primary method)
- Commercial corridors or other public venues
- Venues where young Black and Brown adults congregate

Outreach Teams:

- Largely funded by Kaiser Community donations set aside for this purpose
- Organizations have demonstrated direct outreach capacity and /or a membership base in under-vaccinated Census Tracts or
- Team includes youth development organizations able to deploy youth and young adult outreach workers to venues and events frequented by Black and Brown youth & young adults.
- We also fund outreach support to organizations hosting vaccine pop ups intended to serve under-vaccinated populations.





COVID-19 & THE BLACK COMMUNITY

Join our Education Session **Friday, July 23rd.**
All questions are welcomed.

- ✓ On site medical professionals
- ✓ Historic & culturally relevant information
- ✓ Free COVID-19 vaccination & testing
- ✓ Free hot meal distribution
- ✓ Community resources



Thank you

Questions

Your masks protects everyone,

your vaccine
protects you.



@Dare2BWell

ALAMEDA COUNTY HEALTH CARE SERVICES AGENCY



Alameda County
Health Care Services Agency



Alameda County Public Health Department
Celebrating Healthy People in Healthy Communities