

Alameda County Board of Supervisors

COVID-19 Update

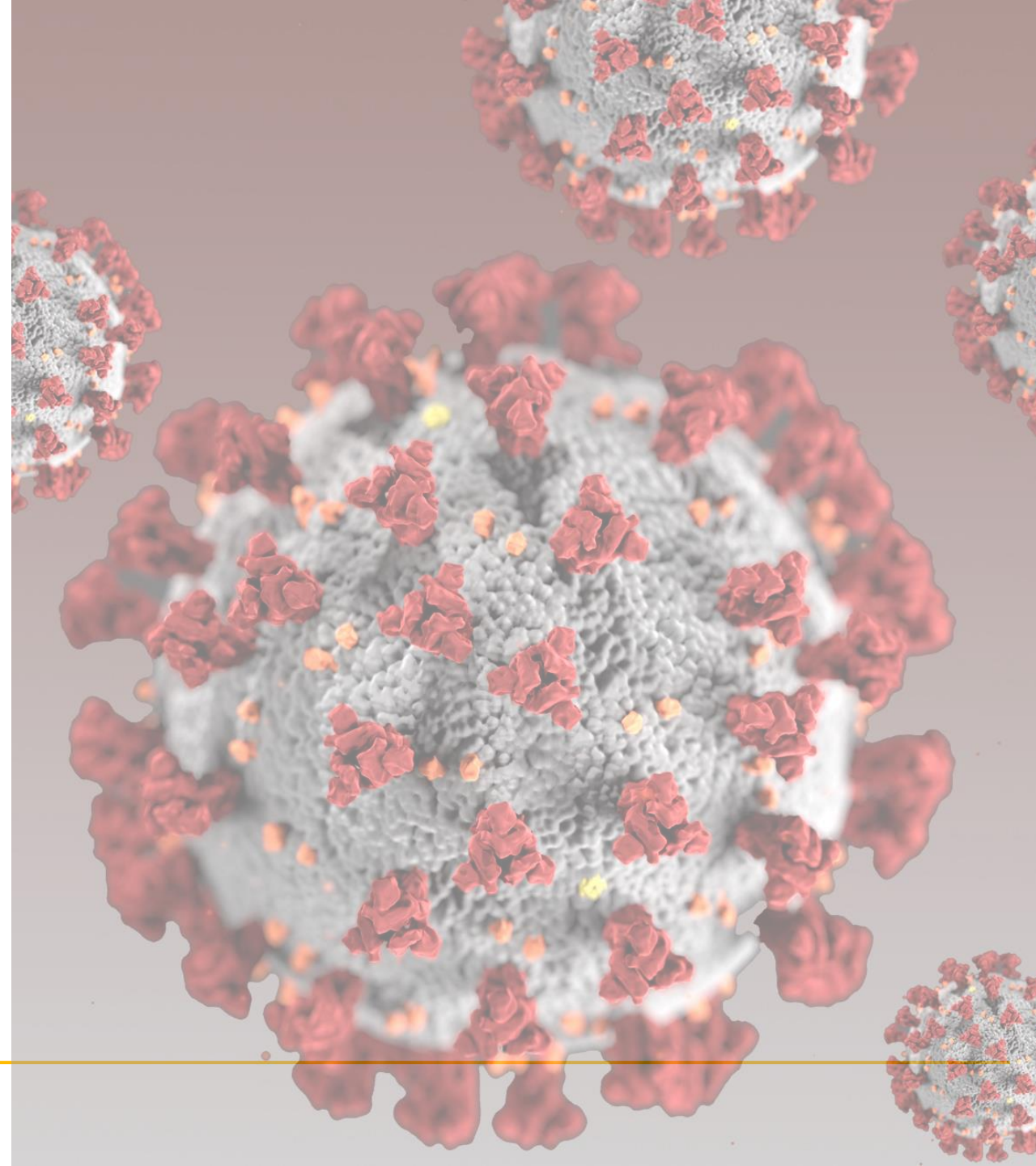
June 8, 2021



Alameda County
Health Care Services Agency



Alameda County Public Health Department
Celebrating Healthy People in Healthy Communities



Agenda

1. Data
2. Re-opening/Blueprint
3. Vaccine Updates
4. Homeless Response
5. Outreach & Communications

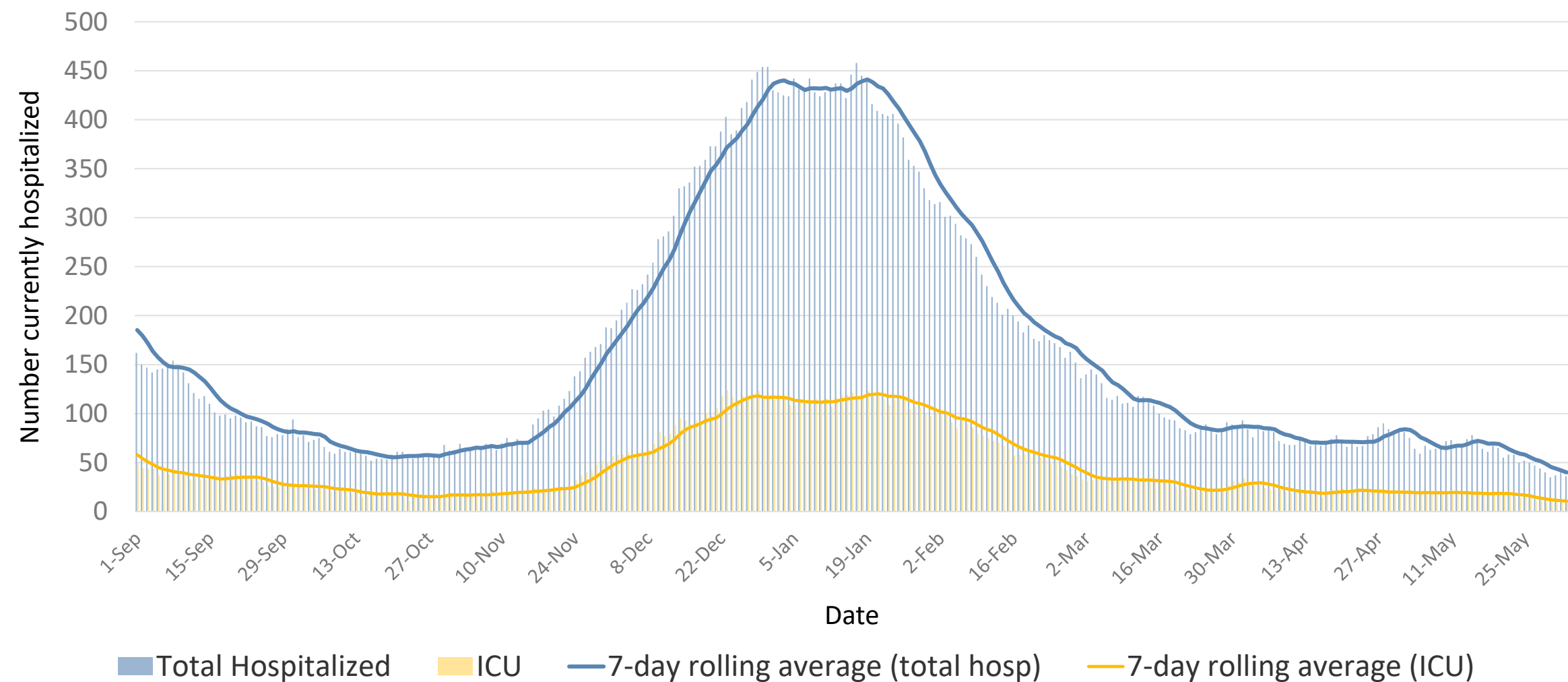


1. Data

Epidemic Data Key Points

- Daily case rate is 2.1 per 100,000
 - Adjusted Case Rate is 1.5
 - Averaging 30 cases reported daily
- Test positivity is 0.7%
 - 1.3% in lowest HPI quartile
- Hospitalized COVID cases 28; ICU 5
- Testing 6,000 per day

COVID-19 Patients Currently Hospitalized in Alameda County



Source: California Department of Public Health

Death Data Updated

- We transitioned to State's COVID-19 death reporting standard 6/4/21
 - Aligning with State, CDC, other LHJs
- Only reporting deaths in which COVID-19 infection contributed to death
 - Many deaths among people with COVID were due to other causes
- The change:
 - Decreased COVID-19 death total from 1,641 to 1,269
 - Does not affect the pattern of disparities or geographic impacts
 - Does not estimate excess deaths from all causes due to the pandemic
 - Gives a more accurate measure of COVID-19 mortality locally



2. Reopening/Blueprint

Blueprint Update

- AC expected to move to Yellow Tier effective 6/9
 - Increases capacity limits for most sectors, allows indoor bars
- State moving Beyond the Blueprint effective June 15
 - Blueprint “color tier” restrictions will be removed
 - No physical distancing or capacity limits for most sectors
 - Mega-Events subject to ongoing restrictions
 - Schools guidance remains in effect
 - Mask mandate remains in effect but expected to focus on unvaccinated persons



CalOSHA Temporary Emergency Standards

- CalOSHA updated COVID-19 Emergency Temporary Standards on 6/3/21
- All workplaces governed by the ETS standards must follow updates including masking requirements for employees.
- Effective 6/15:
 - Masks not required indoors if all employees vaccinated
 - Masks required indoors if vaccination status of employees unknown or if all employees not vaccinated
 - Employers must safeguard any health information
 - Physical distancing no longer required
- FAQ to be provided for additional guidance



3. Vaccine Updates



Alameda County COVID-19 Vaccination Dashboard

% >= 12 Years with at Least One Dose

77.3%

See Counts

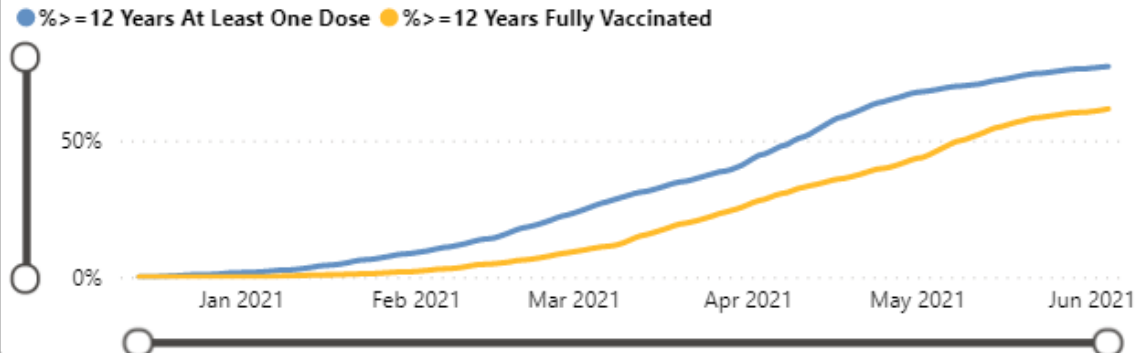
See Percentages

% >= 12 Years Fully Vaccinated

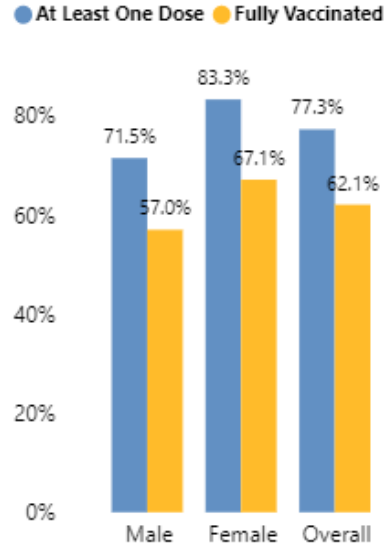
62.1%

Doses Received by the County

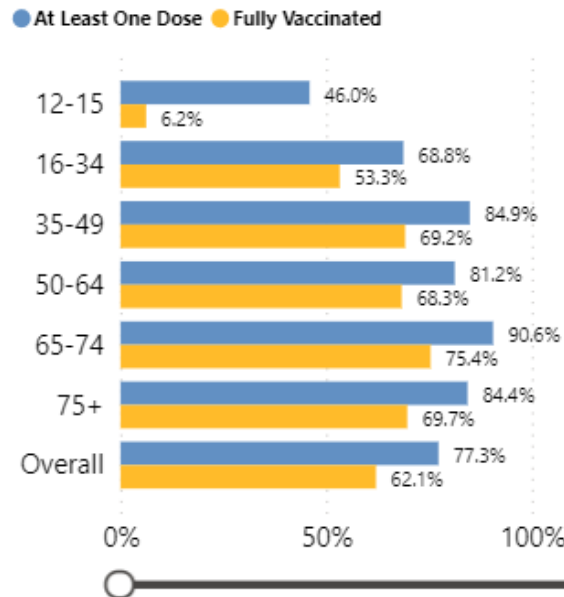
Alameda County Cumulative Percentage of Vaccine Doses



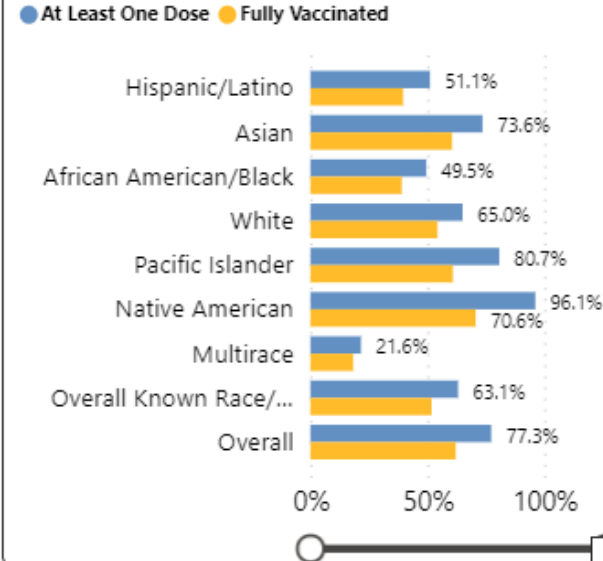
Doses by Gender (% of population >= 12 years)



Doses by Age Group (% of population)



Doses by Race/Ethnicity (% of population >= 12 Years)



% of population >= 12 Years

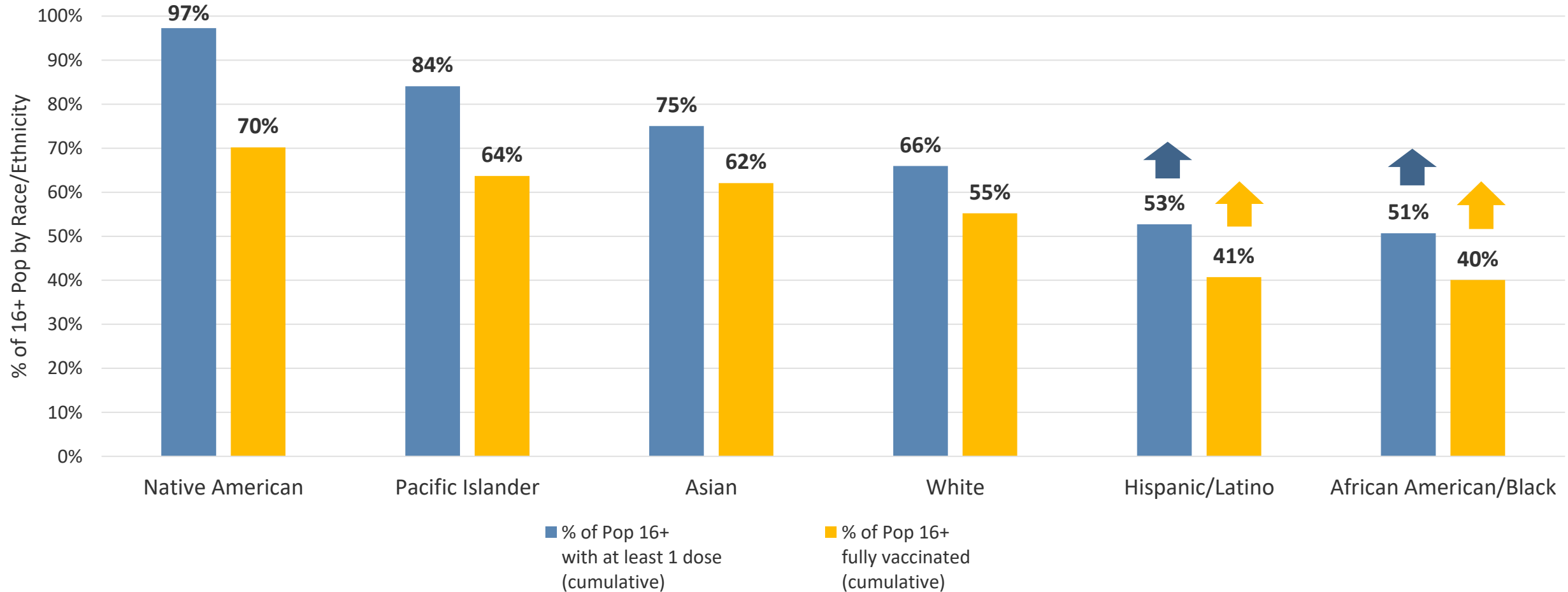
Place	At Least One Dose	Fully Vaccinated
Alameda	83.9%	69.0%
Albany	92.6%	75.3%
Ashland	63.1%	49.1%
Berkeley	77.6%	64.0%
Castro Valley	81.9%	65.1%
Cherryland	66.0%	51.4%
Dublin	79.3%	62.4%
Emeryville	80.6%	63.8%
Fairview	74.2%	60.4%
Fremont	84.3%	66.8%
Hayward	74.7%	59.1%
Hayward Acres	59.3%	45.3%
Livermore	70.9%	56.9%
Newark	78.4%	62.1%
Oakland	75.1%	59.0%
Piedmont	97.9%	78.1%
Pleasanton	84.2%	65.1%
Remainder of County	65.7%	50.1%
San Leandro	78.7%	61.2%
San Lorenzo	76.1%	60.0%
Sunol	82.2%	64.3%
Union City	81.6%	63.0%



Vaccination Rates by Race/Ethnicity

(% of 16+ Population with at least one dose and fully vaccinated):

Cumulative (thru 5/28/21)



Note: Rates by race/ethnicity only reflect vaccinated residents with known RE.

Does not reflect residents with unknown RE who got at least 1 dose (30%) or were fully vaccinated (19%).

Source: ACPHD, with CAIR data thru 5.28.21

Reaching the Unvaccinated

- **Using census tract data to identify & outreach to unvaccinated people**
- **Making stationary sites more flexible**
 - Convenient hours (evenings & weekends)
 - Drop-in registration
 - In-car vaccinations
 - Additional neighborhood outreach
 - Smaller sites
- **Sending mobile vaccinators out to where people live**
 - Use stationary sites as staging for Pop-Ups (hub and spoke)
 - Augment what is already happening in the area – join or add to existing events
 - Workplace outreach and vaccinations
 - Pop up at community/city events



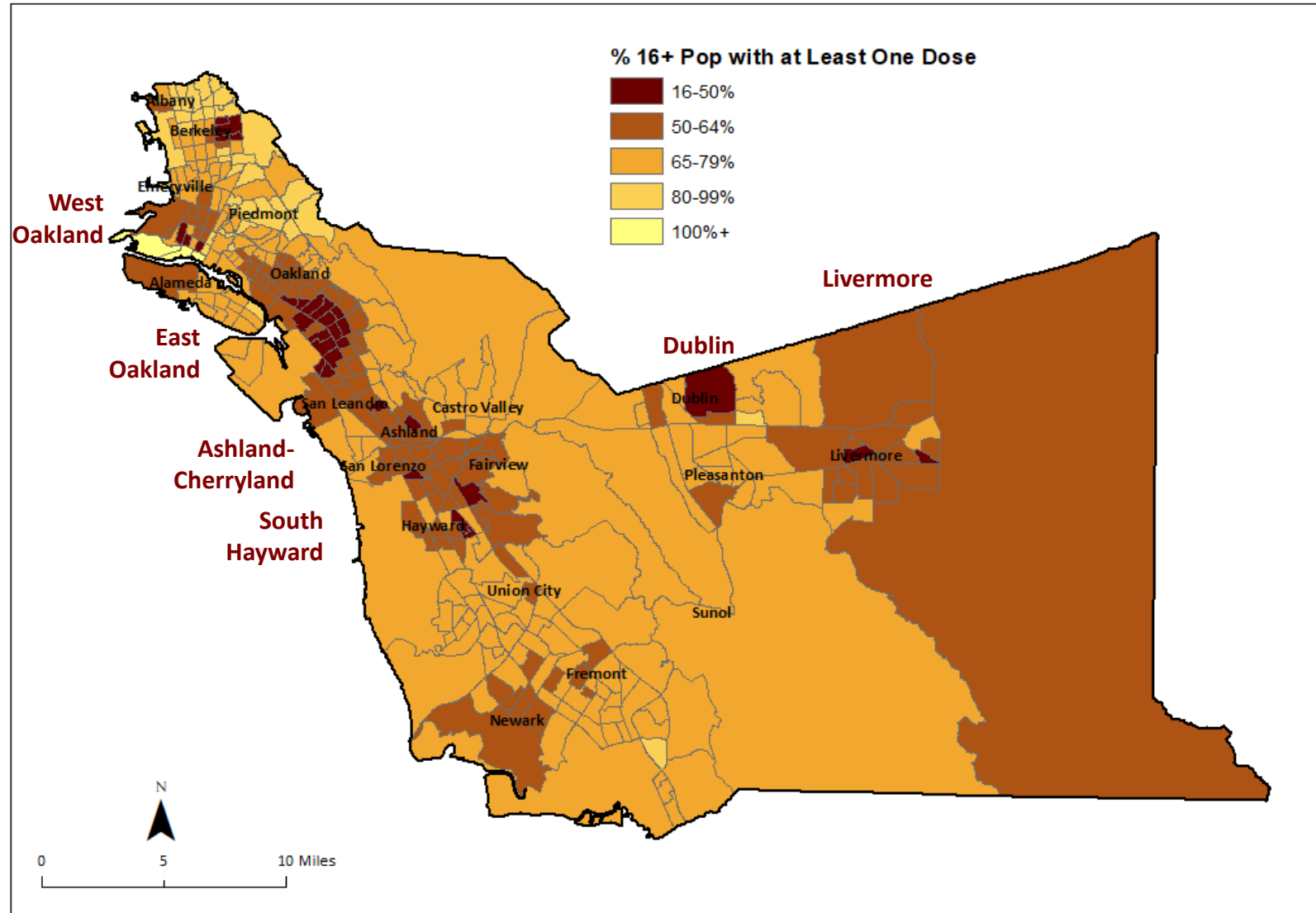
Mobile Pop-Ups Scheduled 6/1 - 6/11

- Berkeley: McGee Baptist Church
- Port of Oakland
- St. Vincent de Paul Dining Room
- CHORI
- Peralta Community College - Laney
- Vietnamese American Community Center of the East Bay (VACCEB)
- Center of Hope
- East Bay Innovation Academy
- Frick United
- Oakland CSC (Pfizer Youth Clinic) CLOSED clinic ACBH only
- ARISE High School
- Latitude High School @ Lazear Charter Academy
- Hyve Solutions
- Life Academy/Oakland Unified School District
- Urban Promise Academy
- El Shaddai/HCH Mobile Dental
- Barbara Lee Health and Wellness Center
- San Leandro Unified School District-John Muir Middle School
- San Leandro USD - San Leandro High School
- New Bridges Presbyterian Church
- BACS South County Wellness Center
- Eden United Church of
- Esperanza Plaza- Alameda Housing Authority/City of Alameda Christ
- Visitacion / Sunnydale Family Day
- West Oakland Block Party



Vaccination Rates by Census Tract: Focusing/Targeting Our Efforts

Vaccination Rate by CT (% of 16+ Pop)



Source: Vaccination Dashboard with data from CAIR, 5.27.21



4. Homeless Response



Updates – Week of June 7, 2021

1. Project Roomkey
2. Project Homekey
3. New allocation of HUD Emergency Housing Vouchers

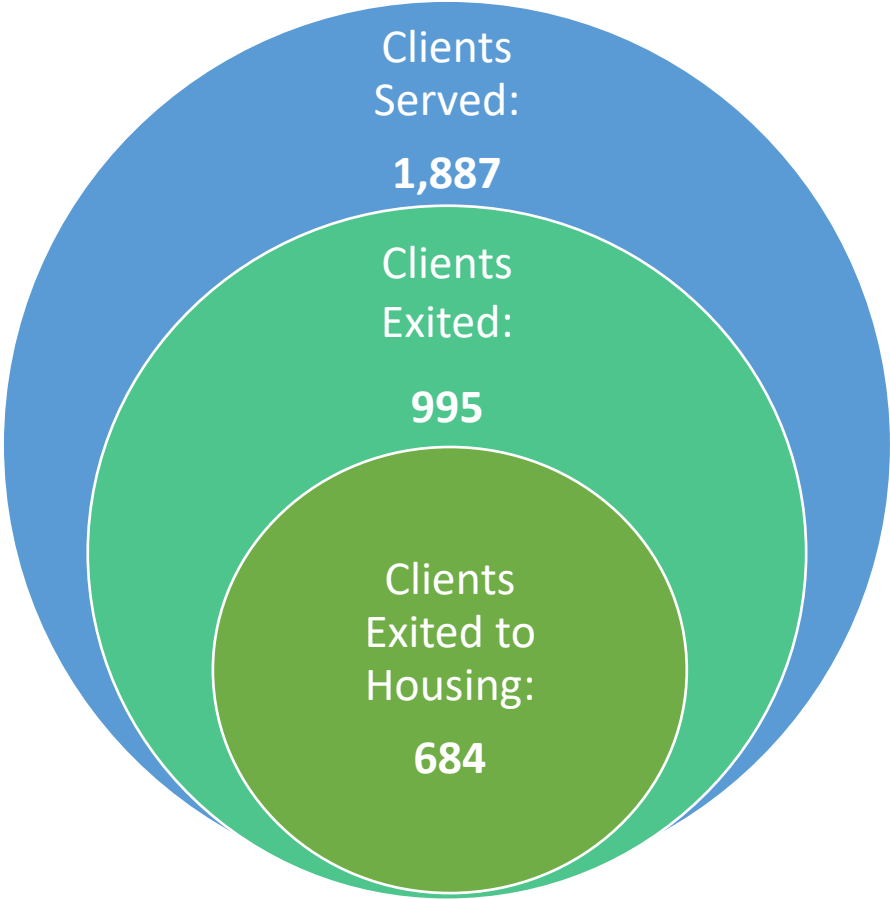


Project Roomkey Alameda County

Project Roomkey continues to prevent the spread of COVID 19 by providing isolation and quarantine locations for people who are COVID+ or exposed, and safe shelter for people who are homeless and at high risk for complications.

More than 680 (69% of people who exited) guests from Safer Ground have been housed!

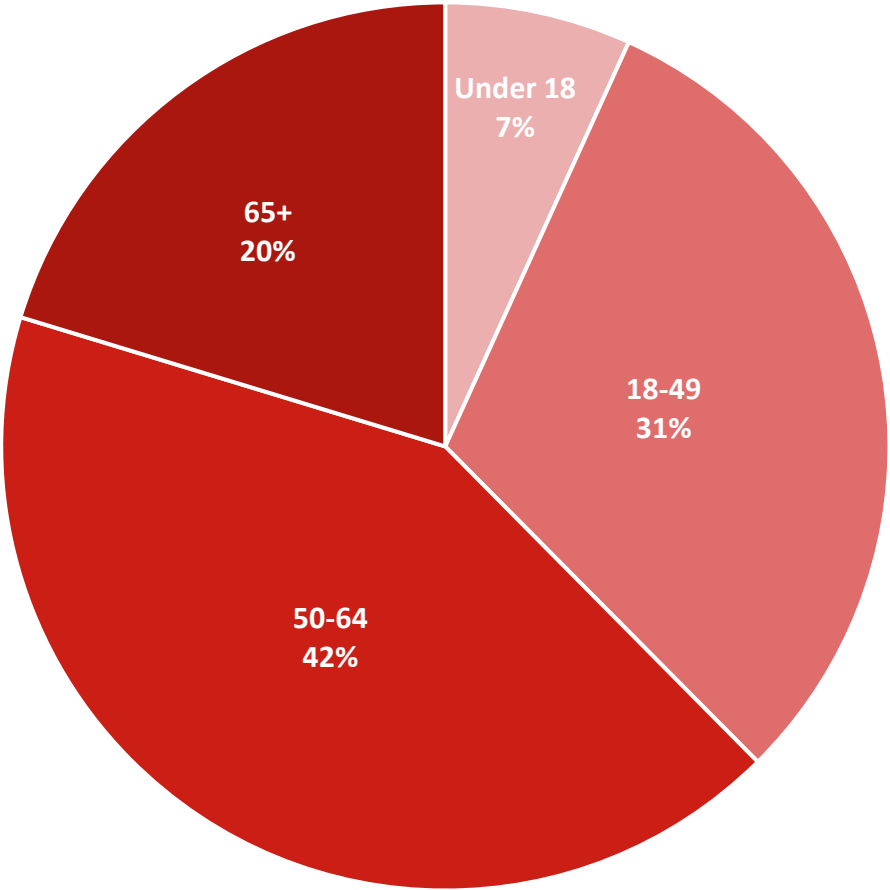
ALL CLIENTS
(Hotels + Trailers)
As of 05/28/2021



Safer Ground: Ages of Clients Served and Exited

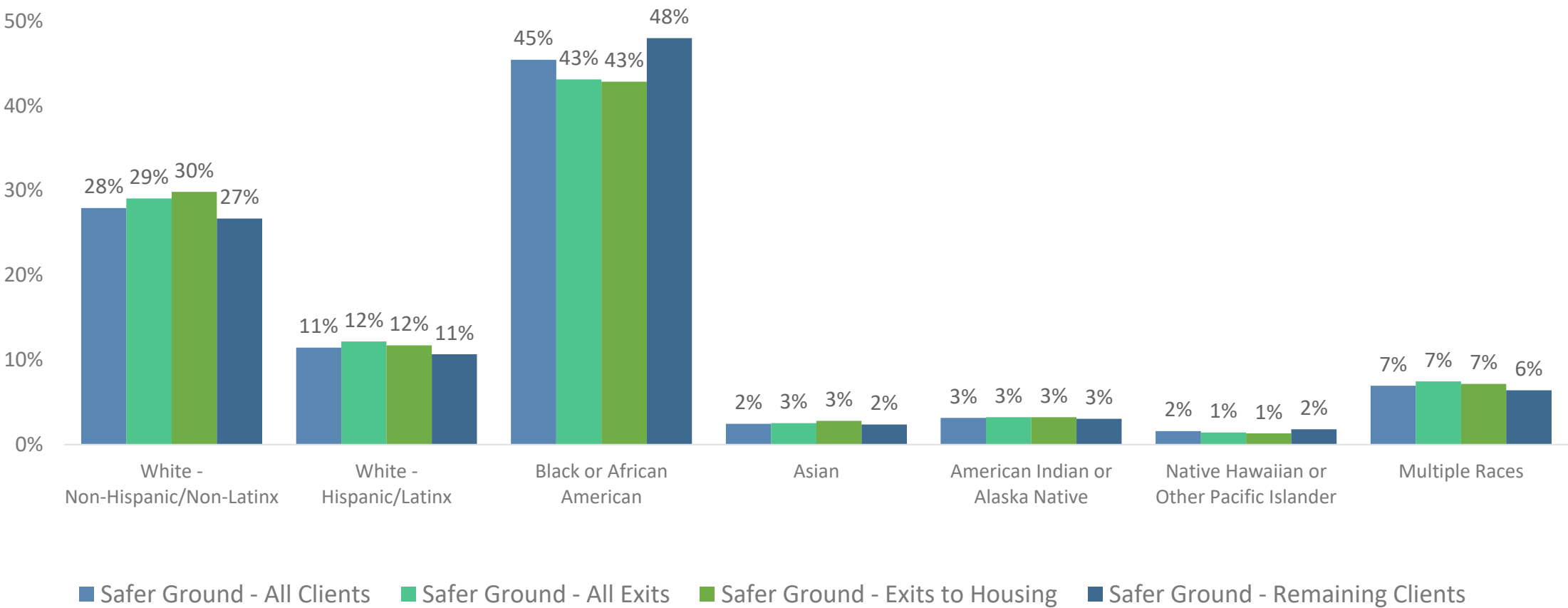
As of 05.28.21

Clients Served
(Hotels + Trailers)



Safer Ground: Demographics – Combined Race and Ethnicity*

As of 05.28.21



*Race category “White” split into mutually exclusive “White – Non-Hispanic/Non-Latinx” and “White – Hispanic/Latinx” based on self-identified Ethnicity

Project Roomkey Timeline + Project Homekey

- Currently have ~800 people in PRK sites throughout the County.
- Scheduled ramp down of Project Roomkey sites from June through September, 2021.
- The two hotel sites Alameda County has purchased through Project Homekey will operate as non-congregate shelter until the rooms/ units are transitioned to permanent supportive housing.
- More detail at: homelessness.acgov.org/roomkey.page

Emergency Housing Vouchers

HUD has allocated 70,000 vouchers to Public Housing Authorities (PHA) to help respond to and prevent COVID-19.

- **Local Allocations: 864 vouchers**

- City of Alameda Housing Authority - 57 vouchers
- Berkeley Housing Authority - 51 vouchers
- Oakland Housing Authority - 504 vouchers
- Housing Authority of County of Alameda - 252 vouchers

- **Eligibility:**

- Experiencing or at risk of homelessness (<30% AMI)
- Fleeing or attempting to flee domestic violence, intimate partner violence, sexual assault, stalking, or human trafficking
- Recently homeless and “for whom providing rental assistance will prevent homelessness” (Ex. RRH and PSH move-on)



OHCC is working with the Public Housing Authorities on an MOU and referral processes.



4. Outreach & Communications

Community Updates: Beyond the Blueprint

Register @ <https://covid-19.acgov.org/beyond-the-blueprint>

Alameda County Beyond the Blueprint Community Update, available on Zoom and Youtube Livestream



June 15th
6:00 PM -7:30 PM



@Dare2BWell



ALAMEDA COUNTY HEALTH CARE SERVICES AGENCY
PUBLIC HEALTH DEPARTMENT



BERKELEY PUBLIC HEALTH

Alameda County Beyond the Blueprint Employer Update, available on Zoom and Youtube Livestream



June 21st
6:00 PM -7:30 PM



@Dare2BWell



ALAMEDA COUNTY HEALTH CARE SERVICES AGENCY
PUBLIC HEALTH DEPARTMENT



BERKELEY PUBLIC HEALTH



Alameda County
Health Care Services Agency



Alameda County Public Health Department
Celebrating Healthy People in Healthy Communities

Bay Area Health Officers Support Full In-person School this Fall

- Bay Area Health Officers support opening schools for full time in-person instruction for all grades in the fall of 2021.
- The [science is now clear](#) - risk of transmission among children wearing masks is very low, even with reduced spacing between desks.
- Lack of in-person learning has disrupted education, weakened social supports provided by school communities, negatively impacted mental health, and prevented participation in rituals and shared milestones that tie communities together.
- For more information, see the [news release](#) or view the press conference [recording](#).



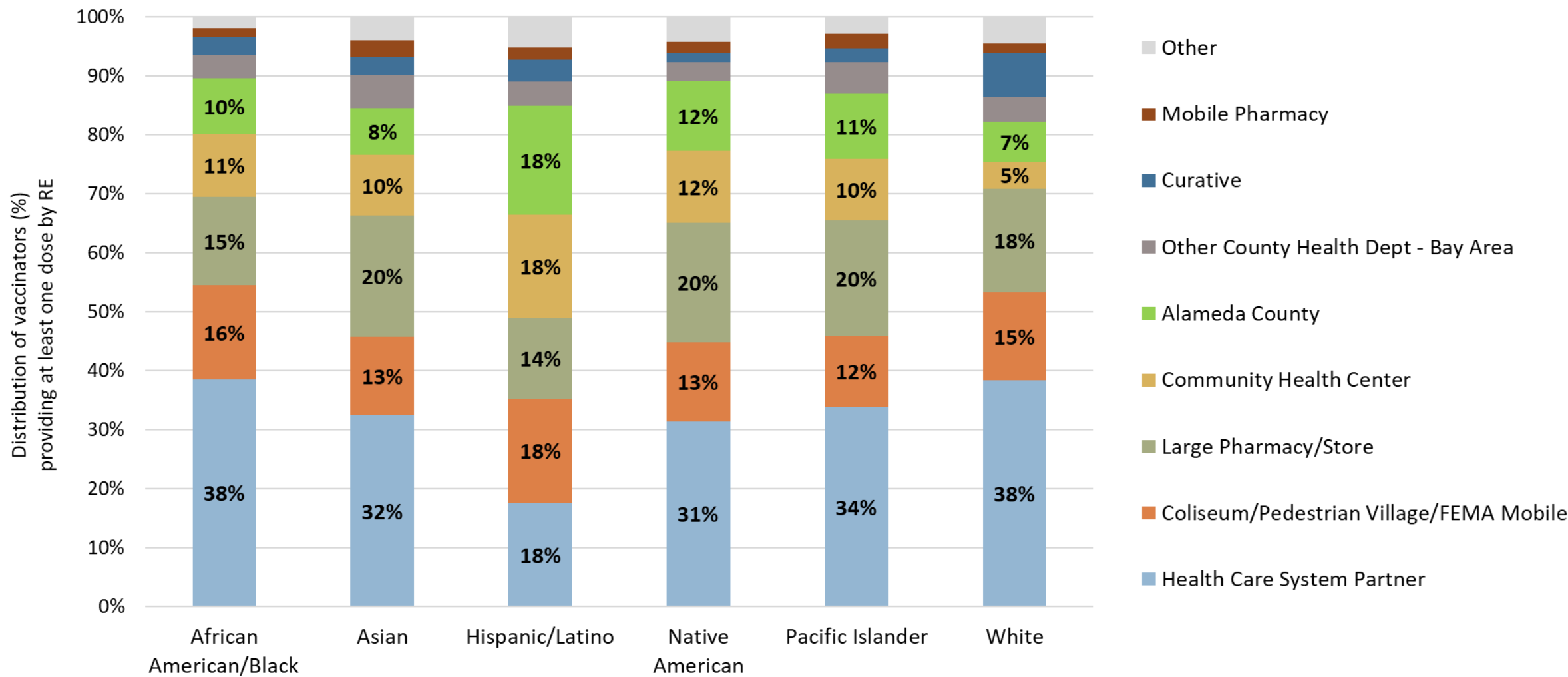
Thank you

Questions



Extra Slides

Distribution of Vaccinators (%) Providing at Least One Dose to Racial/Ethnic Groups in Alameda County



*Note: Percentage (%) distributions for residents with known RE.
Does not reflect residents with unknown RE who got at least 1 dose (30%)*

Source: ACPHD, with CAIR data thru 5.28.21

Weekly vaccine calendar now available @ <https://covid-19.acgov.org/vaccines>

Where to Get a Vaccine

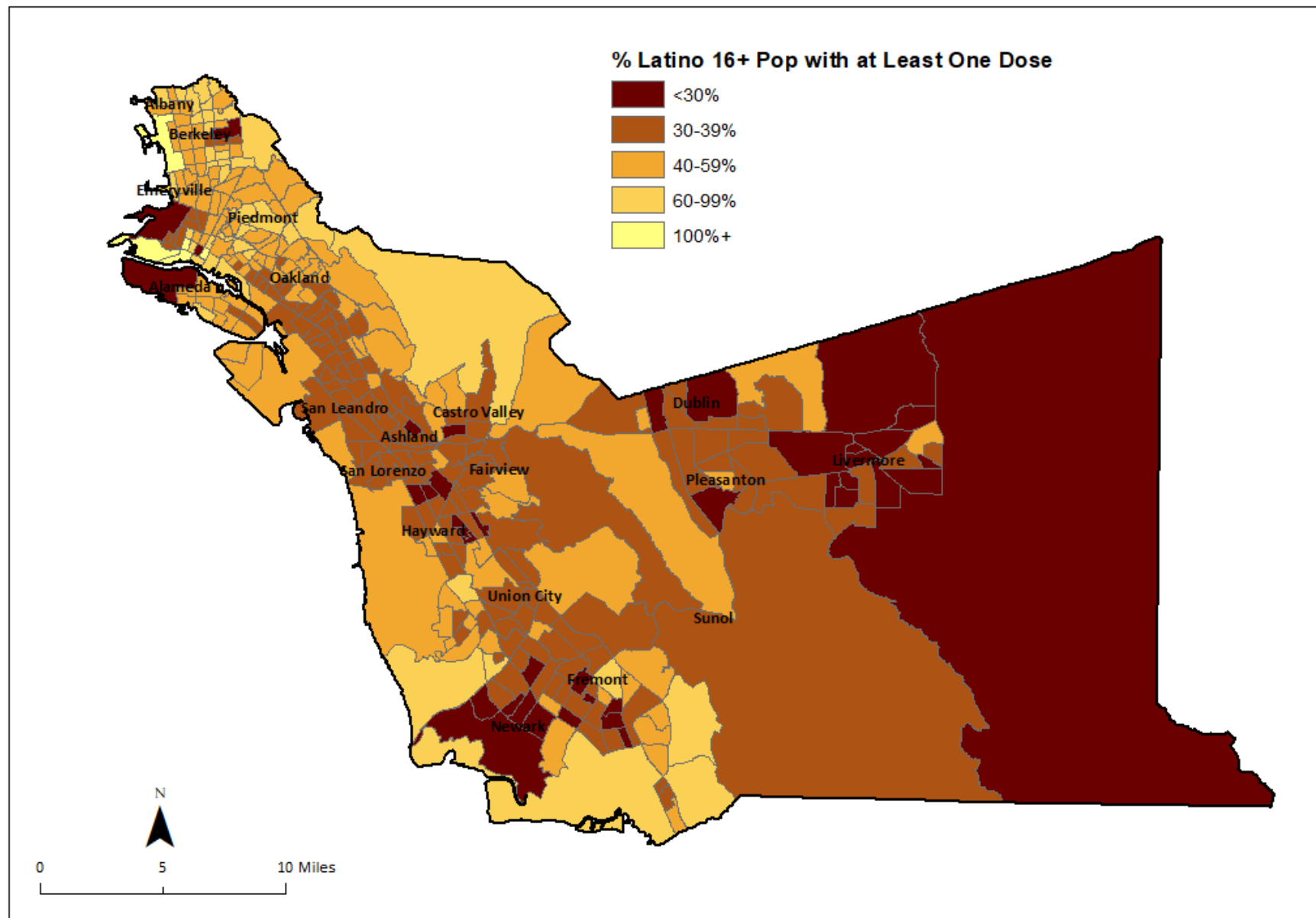
Vaccine Availability by Date

Thursday, June 3	Friday, June 4	Saturday, June 5	Sunday, June 6
<p>Port of Oakland 9:00am - 2:30pm J&J</p>	<p>Port of Oakland 9:00am - 2:30pm J&J</p>	<p>Port of Oakland 9:00am - 2:30pm J&J</p>	<p>UC Old Decoto School 600 G St Union City, CA 94587 1:00pm - 4:00pm Moderna 1st dose</p>
<p>Center of Hope 8411 MacArthur Blvd. Oakland, CA 94605 10:30am - 2:30pm</p>	<p>CHORI 750 Aileen St. Oakland, CA 94609 9:30am - 12:30pm</p>	<p>Hayward Adult School 22100 Princeton St. (Inside Gym) Hayward, CA 94541 8:00am - 4:00pm Moderna 1st & 2nd dose</p>	
<p>Hayward Adult School 22100 Princeton St. (Inside Gym) Hayward, CA 94541 3:00pm - 7:00pm J&J & Pfizer 1st dose</p>	<p>Hayward Adult School 22100 Princeton St. (Inside Gym) Hayward, CA 94541 11:00am - 7:00pm Moderna 1st & 2nd dose</p>	<p>Fremont High School 4610 Foothill Blvd. Oakland, CA 94601 8:00pm - 4:00pm Moderna 1st & 2nd dose</p>	
<p>Fremont High School 4610 Foothill Blvd. Oakland, CA 94601 3:00pm - 7:00pm J&J & Pfizer 1st dose</p>	<p>Fremont High School 4610 Foothill Blvd. Oakland, CA 94601 8:00pm - 4:00pm Moderna 1st & 2nd dose</p>	<p>Allen Temple 8501 International Blvd. Oakland, CA 94621 9:00am - 1:00pm Moderna 1st & 2nd dose</p>	
<p>Allen Temple 8501 International Blvd. Oakland, CA 94621 3:00pm - 7:00pm J&J & Pfizer 1st dose</p>	<p>Allen Temple 8501 International Blvd. Oakland, CA 94621 3:00pm - 7:00pm Moderna 1st & 2nd dose</p>	<p>UC Old Decoto School 600 G St Union City, CA 94587 1:00pm - 4:00pm Moderna 1st dose</p>	
	<p>UC Old Decoto School 600 G St Union City, CA 94587 4:30pm - 7:30pm J&J & Pfizer 1st dose</p>		

** All locations available by appointment or drop-in



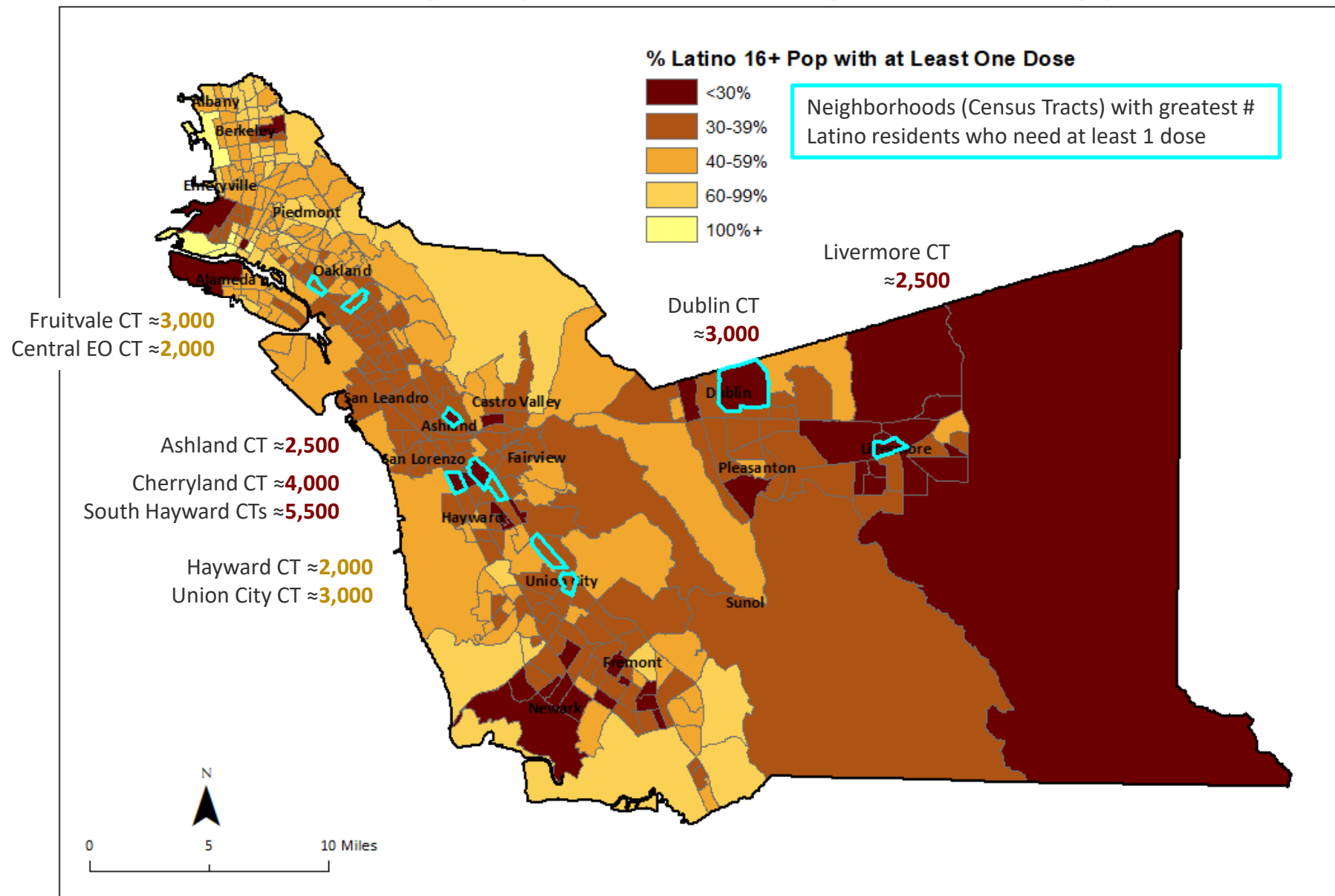
Vaccination Rate by CT (% of Latino/Hispanic 16+ Pop)



Source: Vaccination Dashboard with data from CAIR, 5.27.21



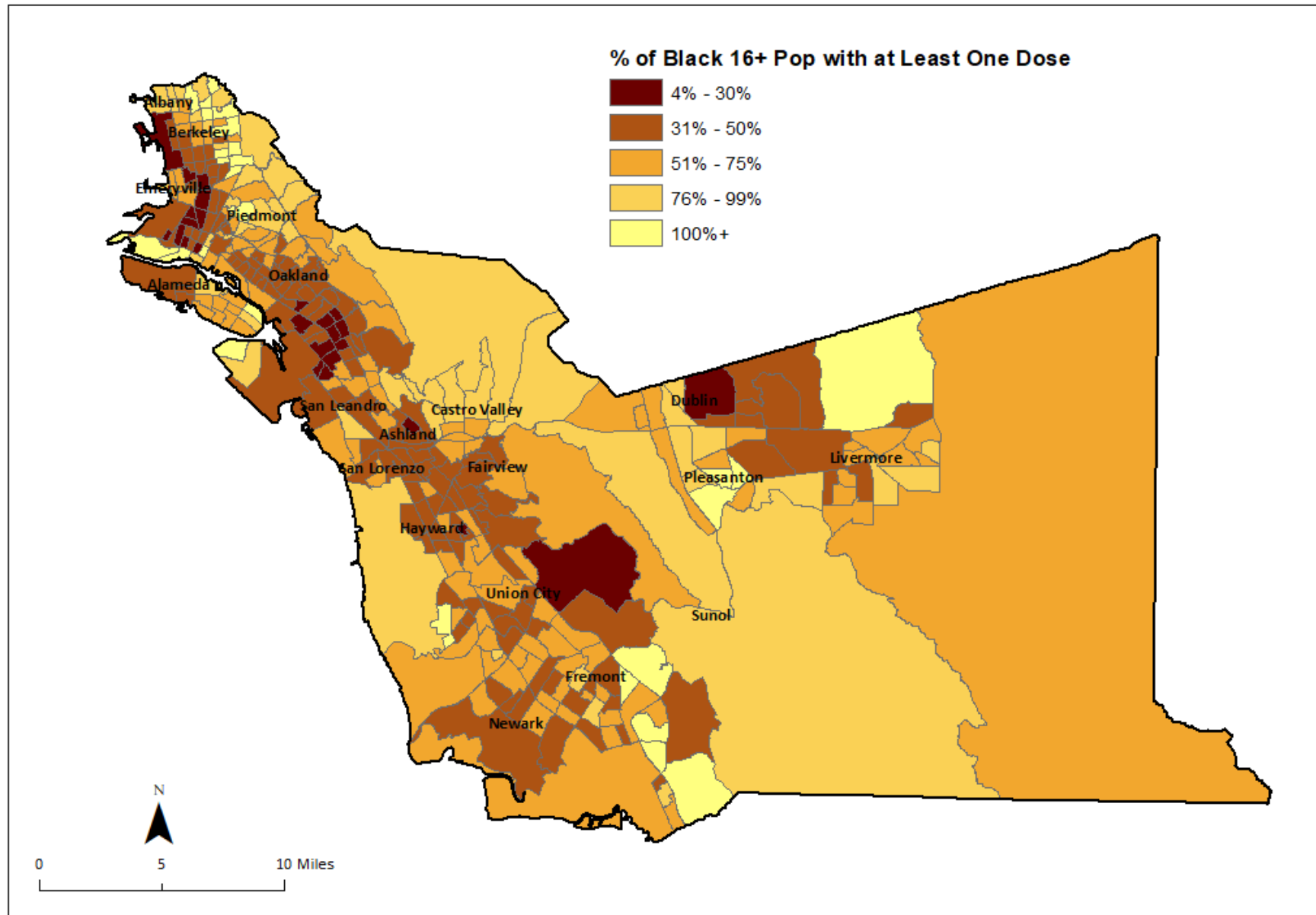
Vaccination Rate by CT (% of Latino/Hispanic 16+ Pop)



Source: Vaccination Dashboard with data from CAIR, 5.27.21



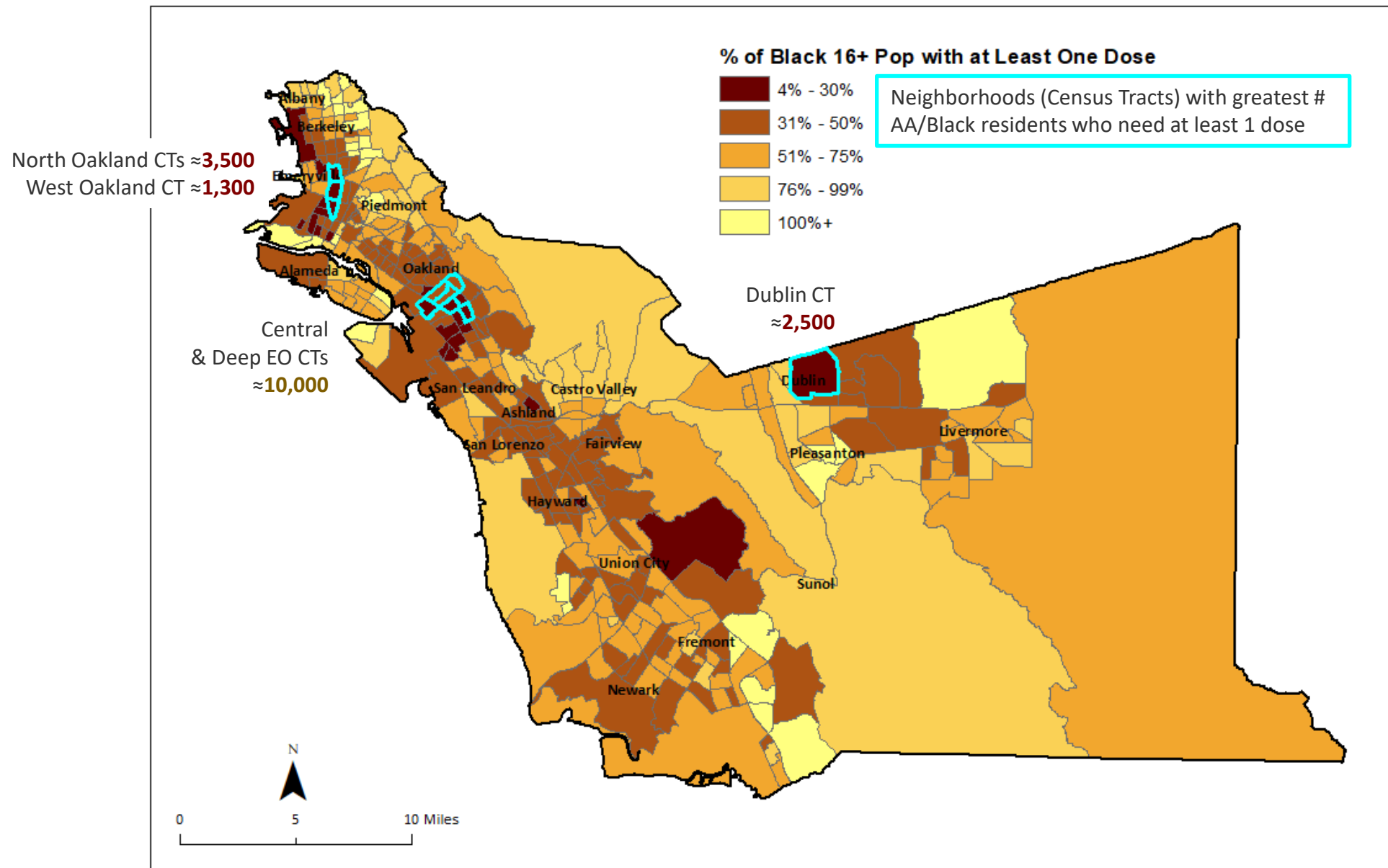
Vaccination Rate by CT (% of AA/Black 16+ Pop)



Source: Vaccination Dashboard with data from CAIR, 5.27.21

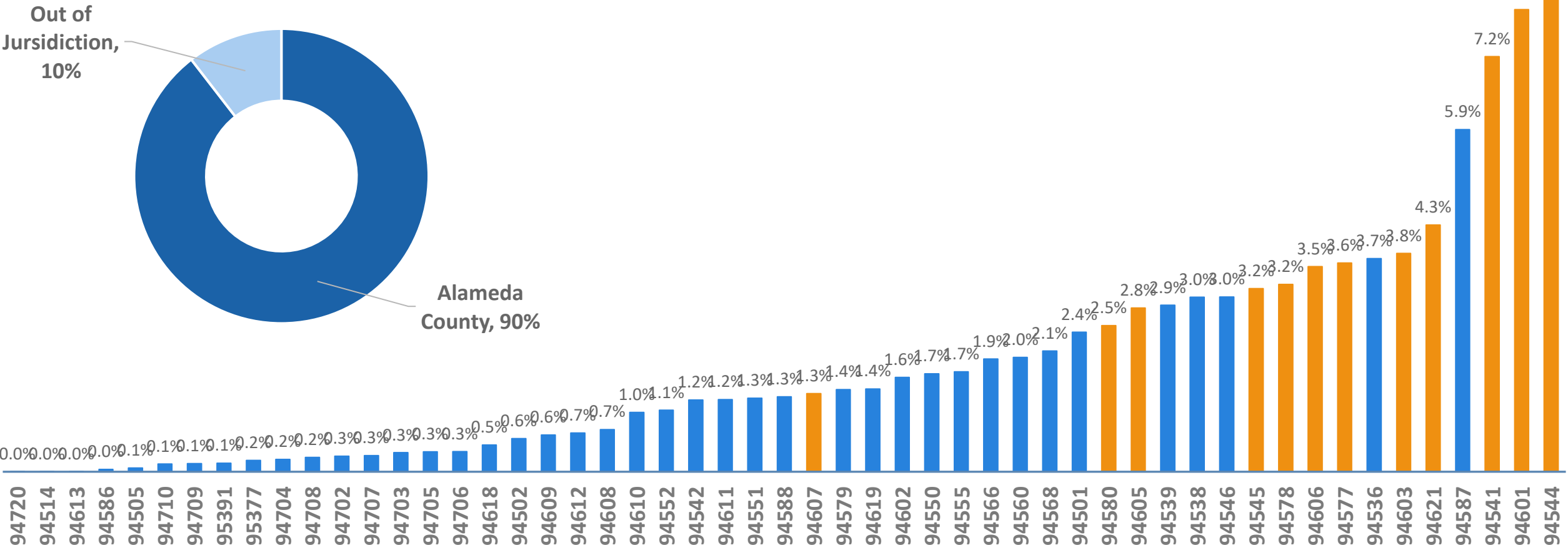


Vaccination Rate by CT (% of AA/Black 16+ Pop)

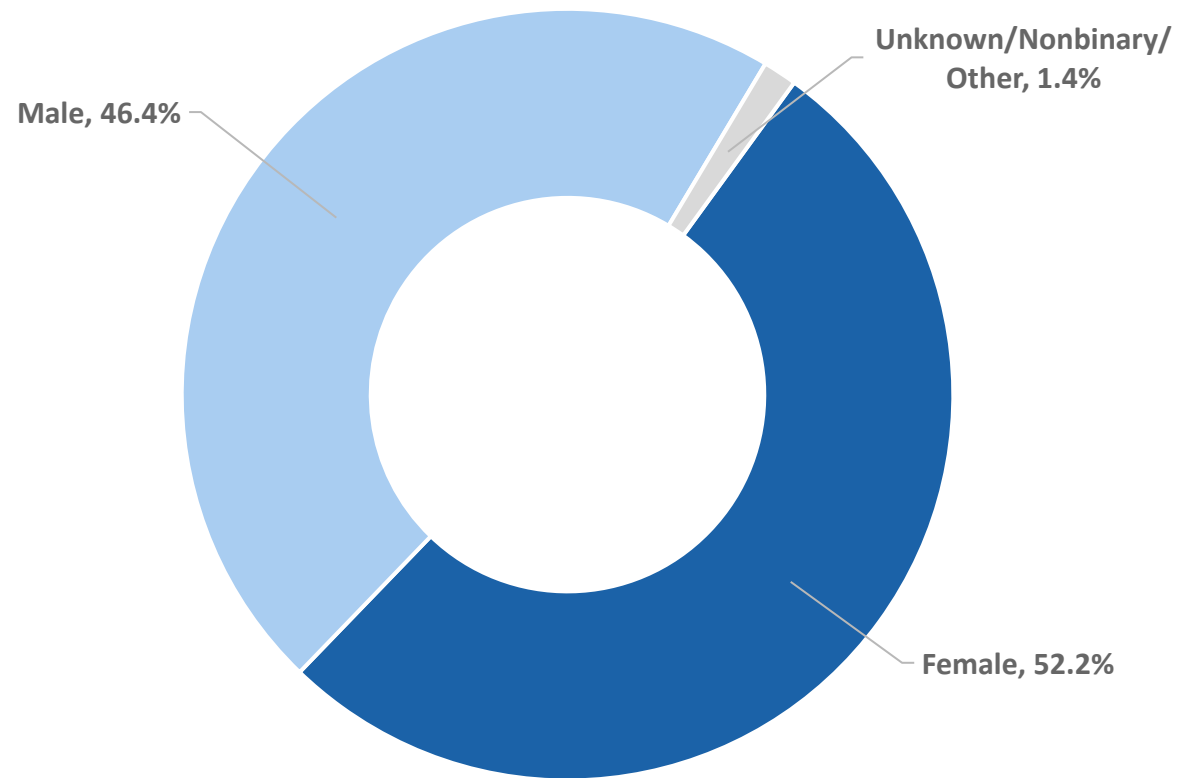


Doses Administered by Zip Code of Residence @Alameda County PODS through 6.05.21 among 90% who are AC residents; orange = high priority zip codes

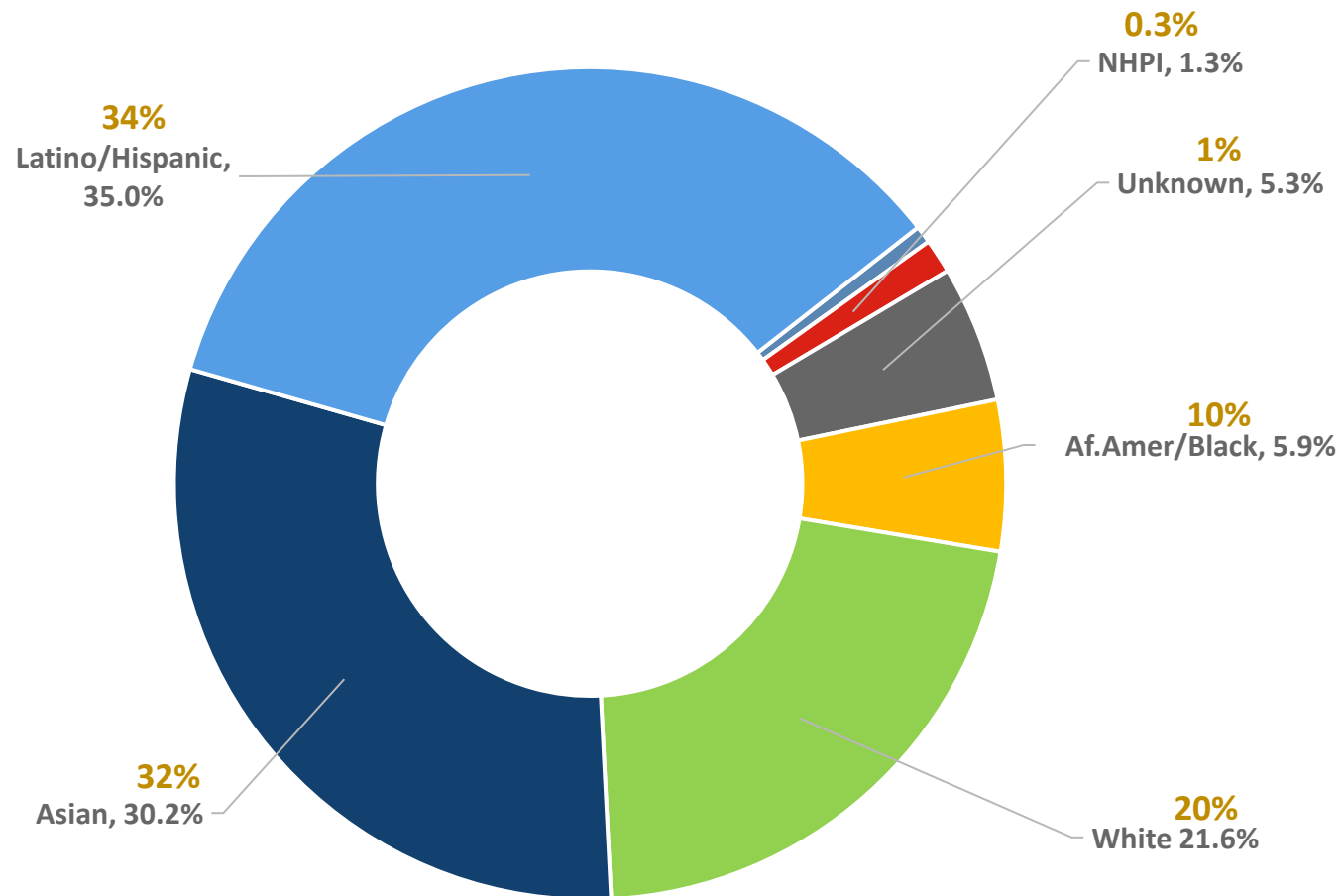
Doses Administered by County of Residence
@ Alameda County PODs through 6.05.21



Doses Administered by Gender
@Alameda County PODs through 6.05.21



Doses Administered by Race/Ethnicity
@Alameda County PODs through 6.05.21



Orange = % of County population over age 16

Alameda County PODs

- 153,924 first doses administered through 6.05.21 at the following sites:
- St. Rose Hospital
- Lake Merritt BART
- Castro Valley Library
- Fremont High School, Oakland
- Alameda County Fairgrounds
- Fire Pop-Ups
 - Tiburcio Vasquez (South Hayward, Union City, San Leandro/Cherryland)
 - La Clinica (Fruitvale)
 - Hayward Fire Clinic
- Mobile vaccinators for LTCF and senior homes (private pharmacies)

Doses Administered by Age Group
@Alameda County PODs through 6.05.21

