

Alameda County Board of Supervisors

COVID-19 Update

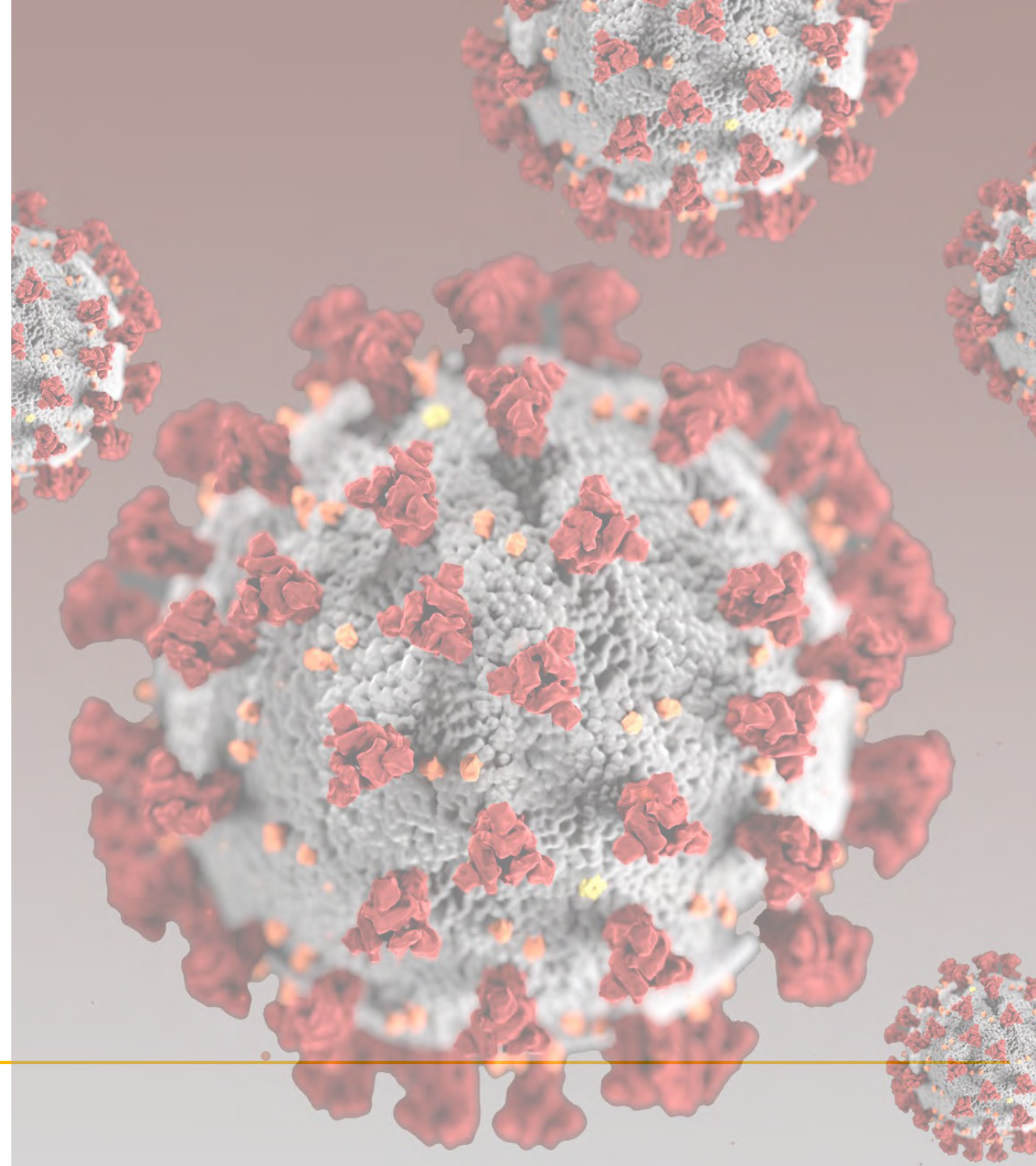
May 4, 2021



Alameda County
Health Care Services Agency



Alameda County Public Health Department
Celebrating Healthy People in Healthy Communities



Agenda

1. Epidemic Update
2. Vaccine Updates
3. Outreach & Communications



Alameda County COVID-19 Epidemic Key Points

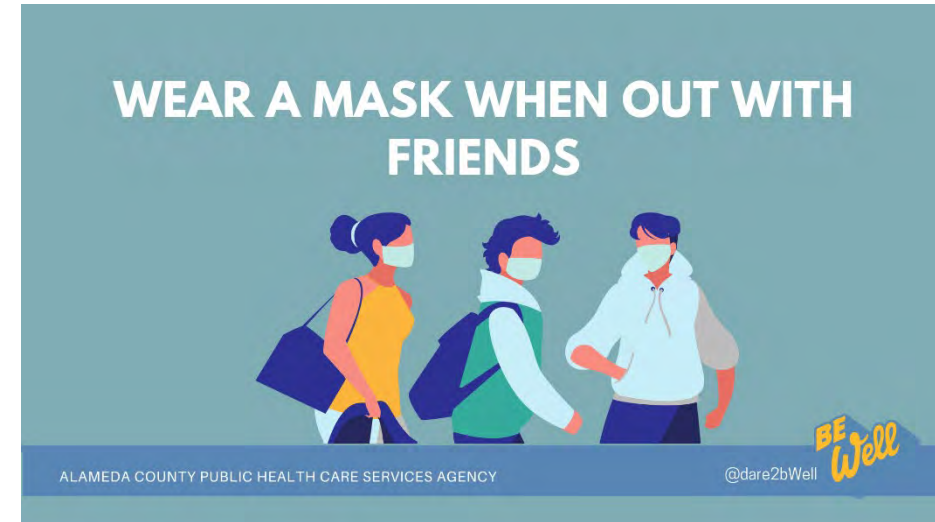
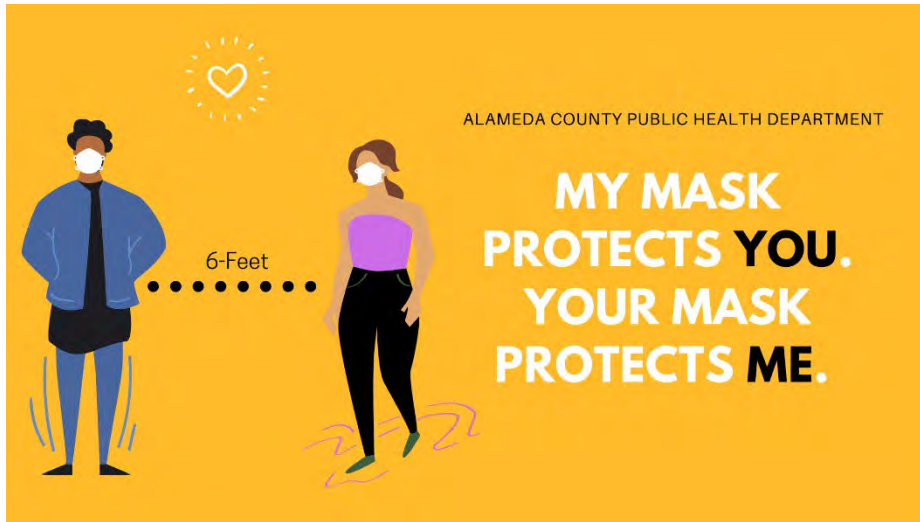
- Daily case rate is 4.8 per 100,000 – downward trend
 - Adjusted Case Rate is 3.7
- Test positivity 1.3%
 - 2% in lowest HPI quartile
- Hospitalized COVID cases 81; ICU 19
- Testing 8,000-8,500 per day
- Internationally, spring wave has exceeded winter wave
 - We had a very small spring wave that seems to have passed
- California remains stable
- Alameda County remains in Orange Tier of State's Blueprint



Uncertainties in future COVID-19 risk

- Extent of vaccine campaign here and abroad
- Waning immunity
- Impact of new variants
- Pace of return to “normal” life
- Tolerance for restrictions
- Tolerance for COVID-19 morbidity and mortality
- We must continue to emphasize individual risk reduction for now





COVID-19 Vaccine for 12-15 year olds

- FDA authorization expected shortly for Pfizer vaccine for ages 12-15
 - 100% efficacy, safe, and well-tolerated in trial of 2,260 children
- HCSA/ACPHD and ACOE preparing to support local distribution:
 - School and district partnerships
 - Clinical providers
 - Pharmacies
 - Mass vaccination sites/Community PODs
 - Storage requirements and packing considerations impact distribution
- Next steps: engage stakeholders; convene CAG workgroup; prepare communication materials; explore state support resources



3. Vaccine Updates



Alameda County COVID-19 Vaccination Dashboard

% >= 16 Years with at Least One Dose

71.4%

See Counts

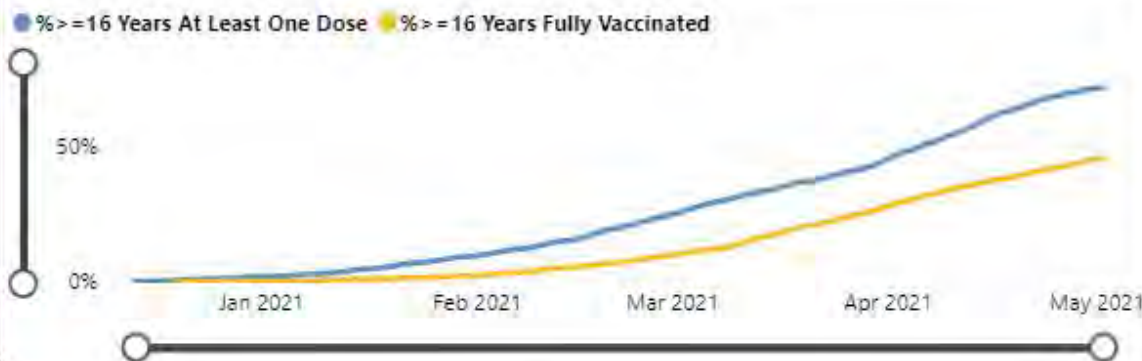
See Percentages

% >= 16 Years Fully Vaccinated

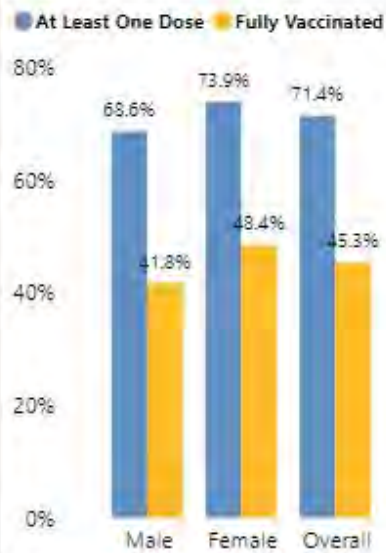
45.3%

Doses Received by the County

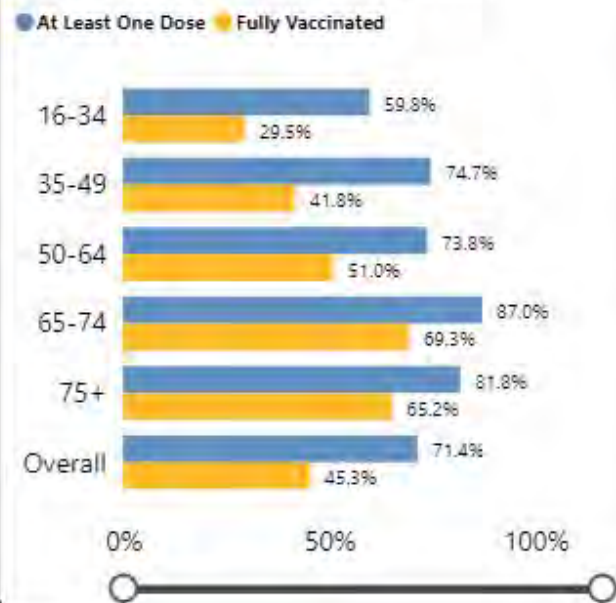
Alameda County Cumulative Percentage of Vaccine Doses



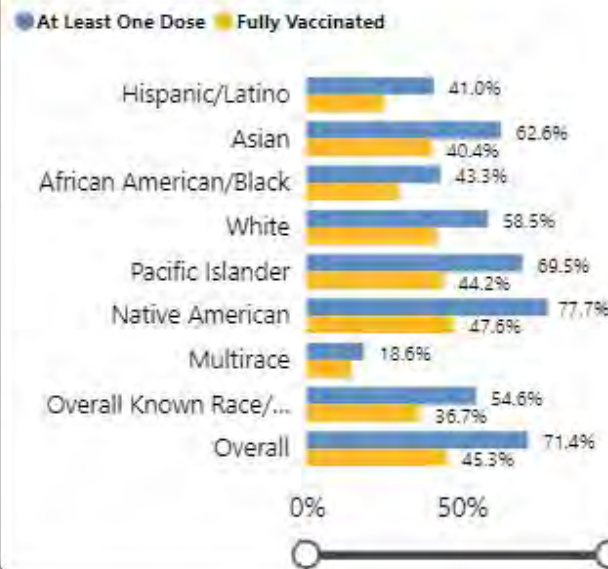
Doses by Gender (% of population >= 16 years)



Doses by Age Group (% of population)



Doses by Race/Ethnicity (% of population >= 16 Years)



% of population >= 16 Years

Place	At Least One Dose	Fully Vaccinated
Alameda	78.6%	53.0%
Albany	87.1%	58.2%
Ashland	56.4%	35.5%
Berkeley	71.6%	48.4%
Castro Valley	75.9%	50.7%
Cherryland	59.2%	37.5%
Dublin	71.6%	40.4%
Emeryville	72.9%	42.9%
Fairview	67.8%	46.6%
Fremont	77.1%	44.6%
Hayward	67.1%	42.6%
Hayward Acres	51.0%	31.2%
Livermore	66.3%	42.6%
Newark	71.5%	42.7%
Oakland	68.7%	44.3%
Piedmont	95.2%	66.5%
Pleasanton	78.0%	45.2%
Remainder of County	61.5%	40.1%
San Leandro	72.2%	46.0%
San Lorenzo	70.6%	46.0%
Sunol	77.7%	49.7%
Union City	75.1%	45.8%



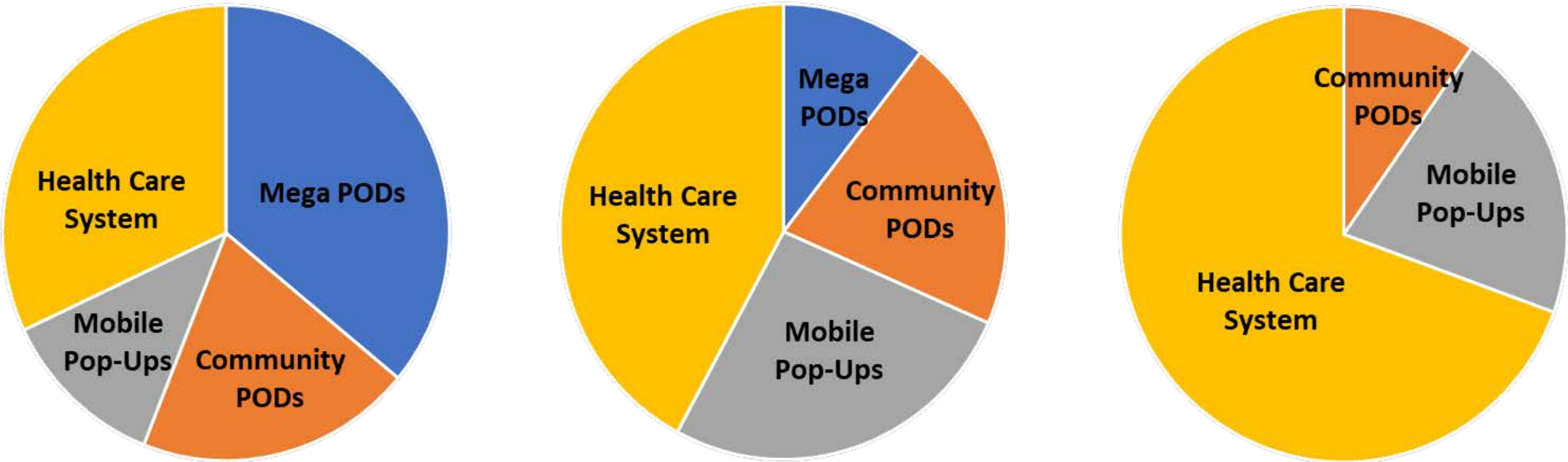
Shifts in Vaccination Strategy

- HCSA's multi-pronged strategy includes Mega PODs, health care partnerships, community PODs, and mobile pop-ups
- Mobile pop-ups and community PODs are popular, especially when paired with community partners and trusted messengers
- Demand for appointments declining with increasing overall vaccination rates
- HCSA planning to
 - Phase out Mega PODs
 - Increase community-based strategies



Evolving vaccination strategy

Alameda County Vaccination Options



Current —————→ **Longer Term**

Community PODs = County supported PODs, up to 2,000 doses per day
Mega PODs = 4,000 – 6,000 doses per day
Mobile pop-ups = County supported partnerships with vendors and community organizations; up to 500 doses per pop-up
Health Care System = clinics, hospitals, pharmacies, and large health systems

Coliseum Update

- Coliseum site experienced a rapid reduction in first dose appointments during the last 2 weeks of April – ~4k/day to ~400/day
- CalOES concluding its deployment on 5/9/21
- Appointments for second doses scheduled through 5/23/21
- HCSA planning to maintain the Coliseum site through 5/23/21 to complete second doses and close thereafter
- Proposed with Carbon Health, Native American Health Center, Lifelong, Bay Area Community Health, and La Familia to complete second doses



CalOES/FEMA Mobile Trailers--Schedule

- 2 Trailers; 7 days per week
- April 12th-May 9th, 2021
- Up to 500 doses per day
- Pfizer
- Taking Drop-in appointments
- Almost all in HPI target ZIPs (Support Life only exception)
- Alameda County will provide 2nd doses for 2 full weeks of trailers with Clinical Partners

County-Coordinated with:

1. Native American Health Center
2. La Familia Counseling Services
3. Lifelong Medical
4. Bay Area Community Health

Week	Mobile Vaccine Clinic 1	Mobile Vaccine Clinic 2
#9 April 12-18 1 st Dose	Faith Fellowship St Bernard/62 nd Ave Parish Acts Full Gospel COGIC	Native American Health Center La Familia Counseling Services Livermore Glad Tidings
#10 April 19-25 1 st Dose	Acts Full Gospel St Bernard/62 nd Ave Parish True Vine Ministries	Glad Tidings Support Life Foundation
#11 April 26-May 2 1 st Dose	Support Life Foundation-Fremont La Familia Counseling Services True Vine Ministries	Glad Tidings St. Bernard/62 nd Ave Parish Support Life Foundation-Oakland
#12 May 3-9 2 nd Dose	<i>Faith Fellowship St Bernard/62nd Ave Parish Acts Full Gospel COGIC</i>	<i>Native American Health Center La Familia Counseling Services Livermore Glad Tidings</i>
#13 May 10-16 2 nd Dose	<i>Acts Full Gospel St Bernard/62nd Ave Parish True Vine Ministries</i>	<i>Glad Tidings Support Life Foundation</i>
#14 May 17-23 2 nd Dose	<i>Support Life Foundation-Fremont La Familia Counseling Services True Vine Ministries</i>	<i>Glad Tidings St. Bernard/62nd Ave Parish Support Life Foundation-Oakland</i>



4. Outreach & Communications

GETTING A VACCINE IN ALAMEDA COUNTY

WHERE CAN I GET ONE?



Alameda County Sites

Sign up at bit.ly/AlCoSignUp

- Alameda County Fairgrounds
- Fremont High near the Fruitvale and Hayward Adult School near Ashland, Cherryland, and Hayward Acres. Drop in appointments available for people who live in these zip codes: 94601, 94603, 94605, 94606, 94607, 94621, 94541, 94544, 94545, 94577, 94578, 94580



OAKLAND-ALAMEDA COLISEUM SITE

Sign up at myturn.ca.gov or
by calling 833-422-4255



BUCHANAN PARKING AT GOLDEN GATE FIELDS

Sign up at bit.ly/BerkVax



GETTING A VACCINE IN ALAMEDA COUNTY



YOU CAN ALSO FIND AN APPOINTMENT BY:

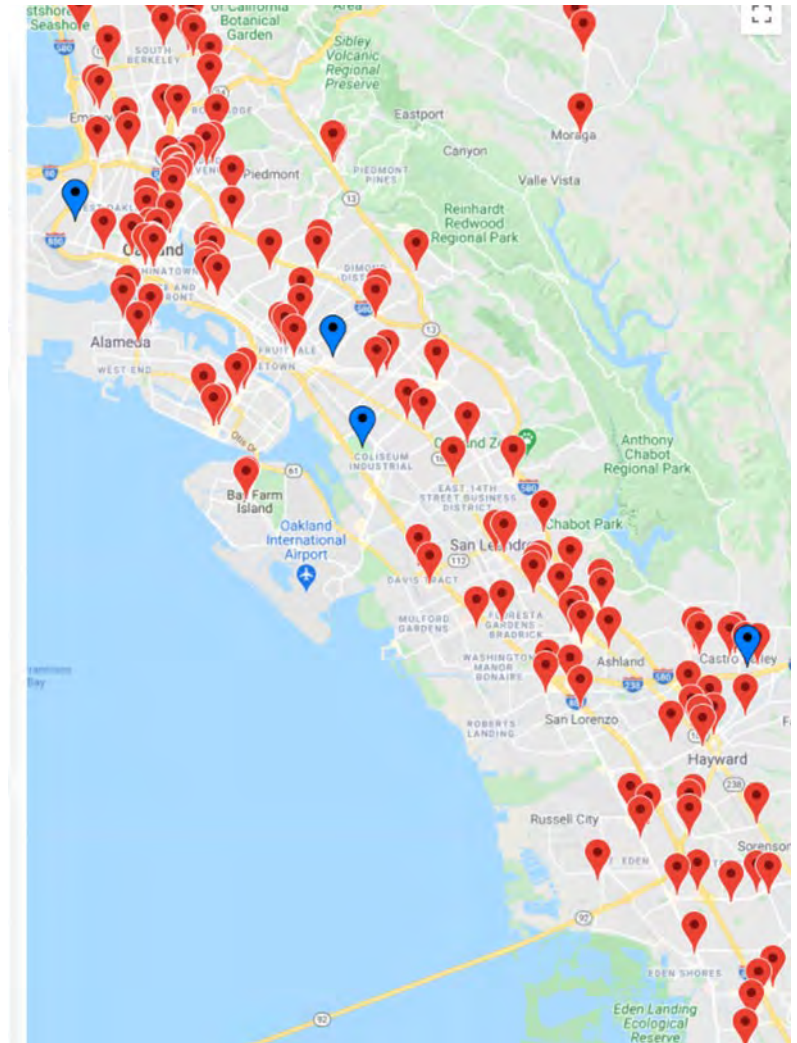
- Checking with your current health provider
- Booking appointments at CVS, Rite Aid & Safeway
- Call 510-208-4VAX (510-208-4829) if you need support making an appointment in Alameda County



WHAT DO I NEED TO KNOW?

- All available & approved vaccines are safe and highly effective.
- Bring: photo ID (does not need to be government-issued), proof of home address if not on ID & appointment confirmation

Vaccinate.CA map on our website



Thank you

Questions