

# Alameda County Board of Supervisors

## COVID-19 Update

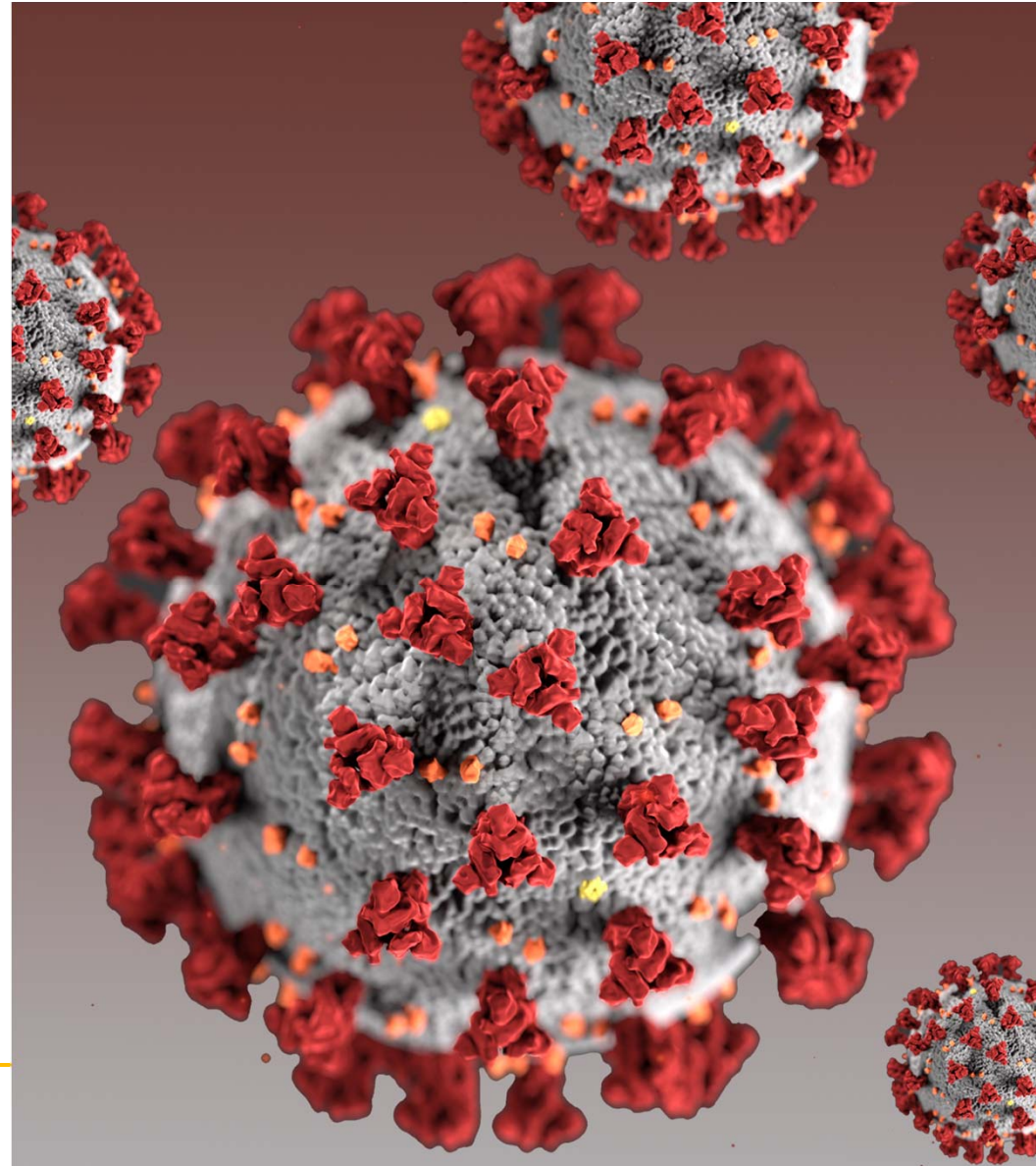
January 26, 2021



Alameda County  
Health Care Services Agency



Alameda County Public Health Department  
Celebrating Healthy People in Healthy Communities



# Presentation Overview and Key Points

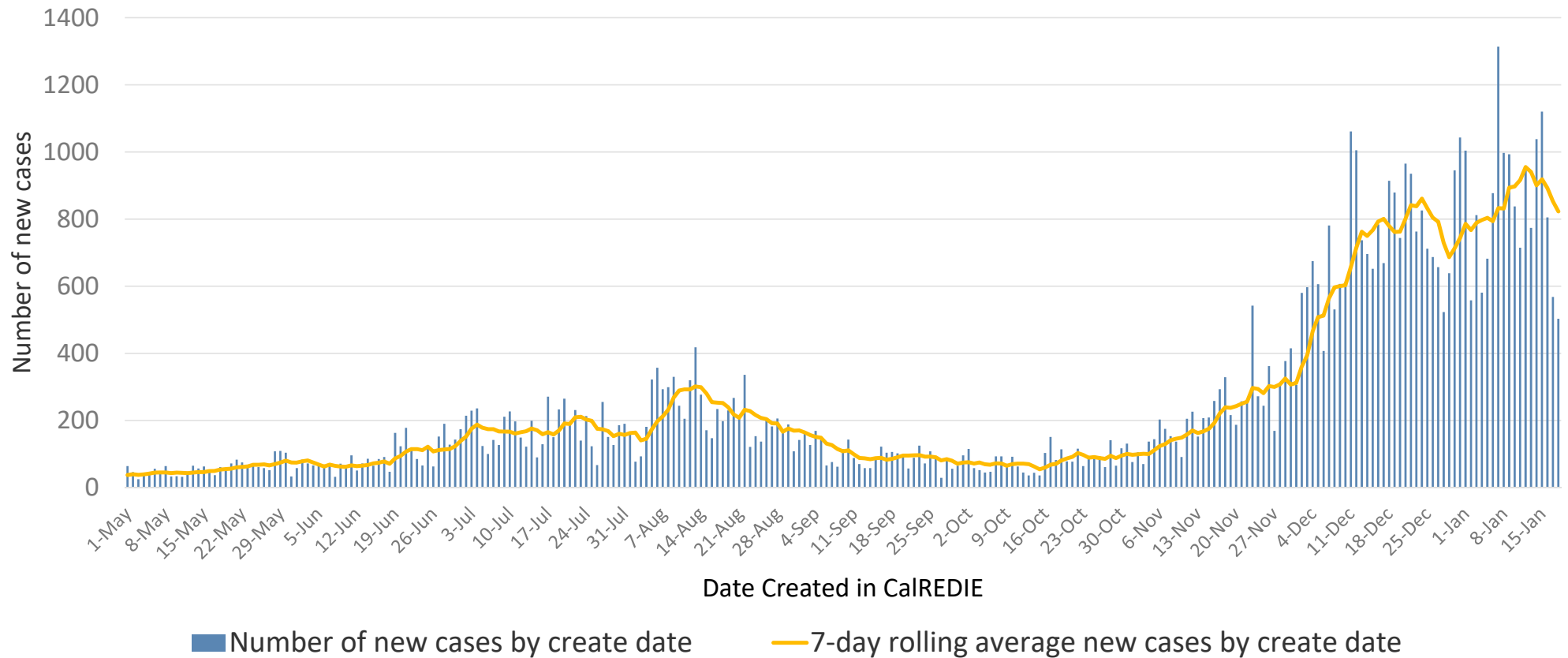
## Current COVID-19 Status in Alameda County

- Case rates and hospitalizations **improving**
- State Regional **Stay at Home Order lifted** January 24
  - County subject to Purple Tier restrictions
- K-6 **schools able to open soon**, with approved safety plans

## COVID-19 Vaccine

- State will be moving to an **age-based vaccine prioritization** framework
- The **participation of multiple health care sectors and partners will be required** for early and sustained access to vaccine for all county residents
- Alameda County is **currently vaccinating in State's Phase 1a** (health care workers)
  - Phase 1a population in Alameda County = ~145,000
  - First doses received to date = ~65,000
- The pace of vaccination will be constrained by **vaccine supply**

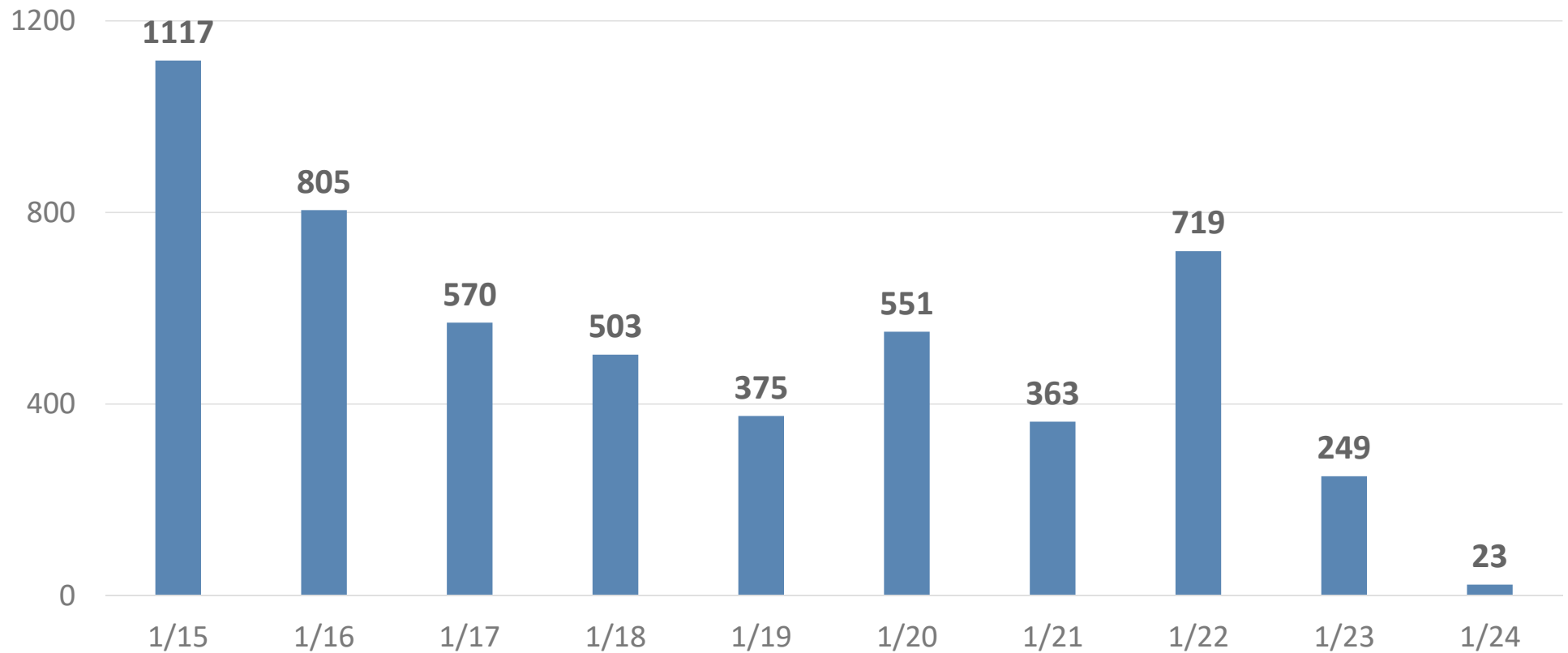
# New Alameda County COVID-19 Cases by date created



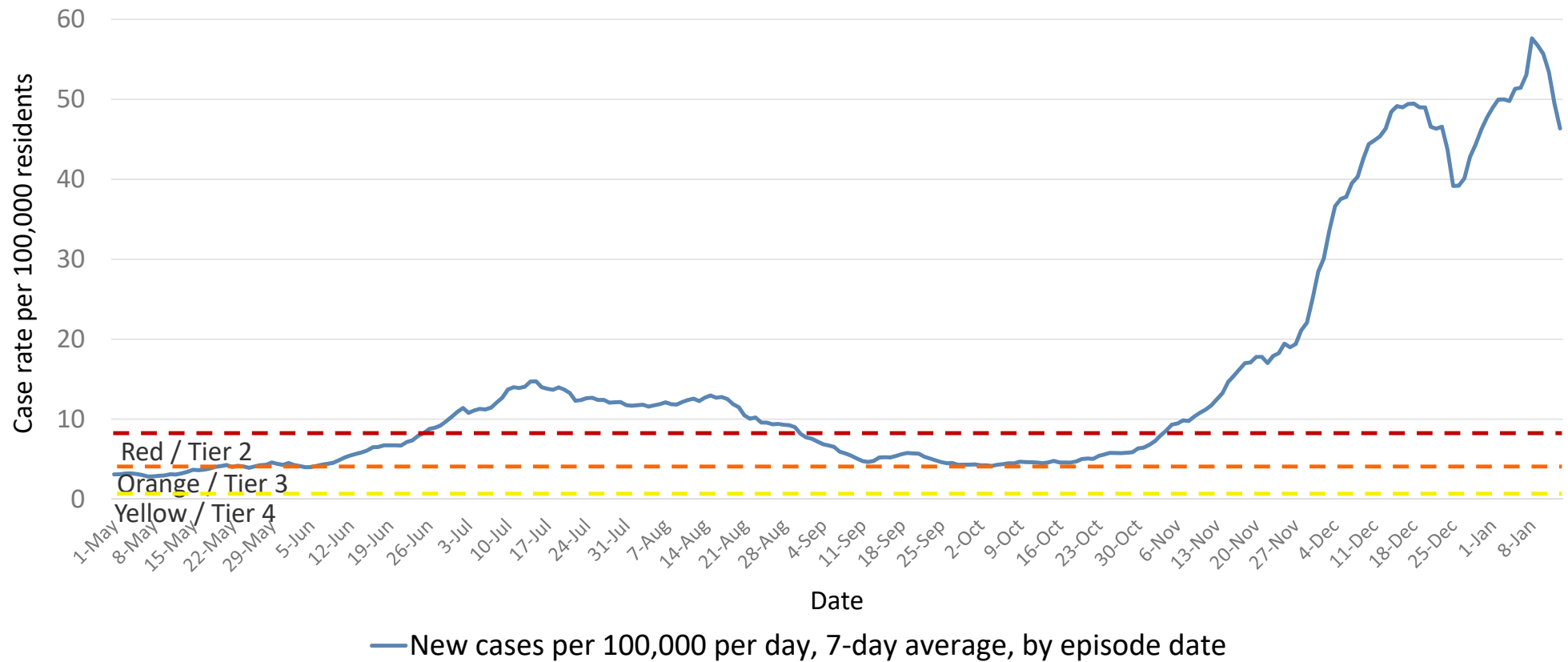
Includes City of Berkeley

Source: CalREDIE Data Distribution Portal download January 21, 2021 9:30 am.

## Reported COVID-19 Cases, January 15 to 24, 2021



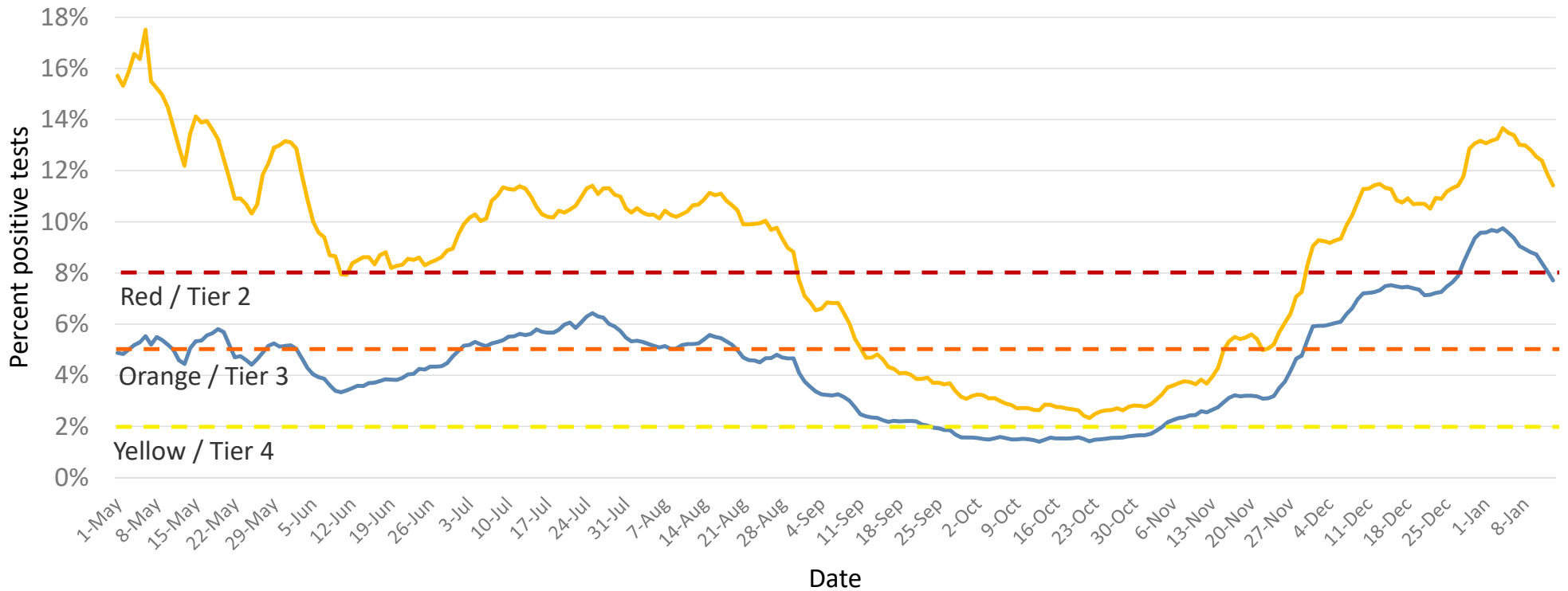
# Alameda County COVID-19 Daily Case Rate



Includes City of Berkeley

Source: CalREDIE Data Distribution Portal download January 21, 2021 9:30 am.

# Alameda County COVID-19 Test Positivity

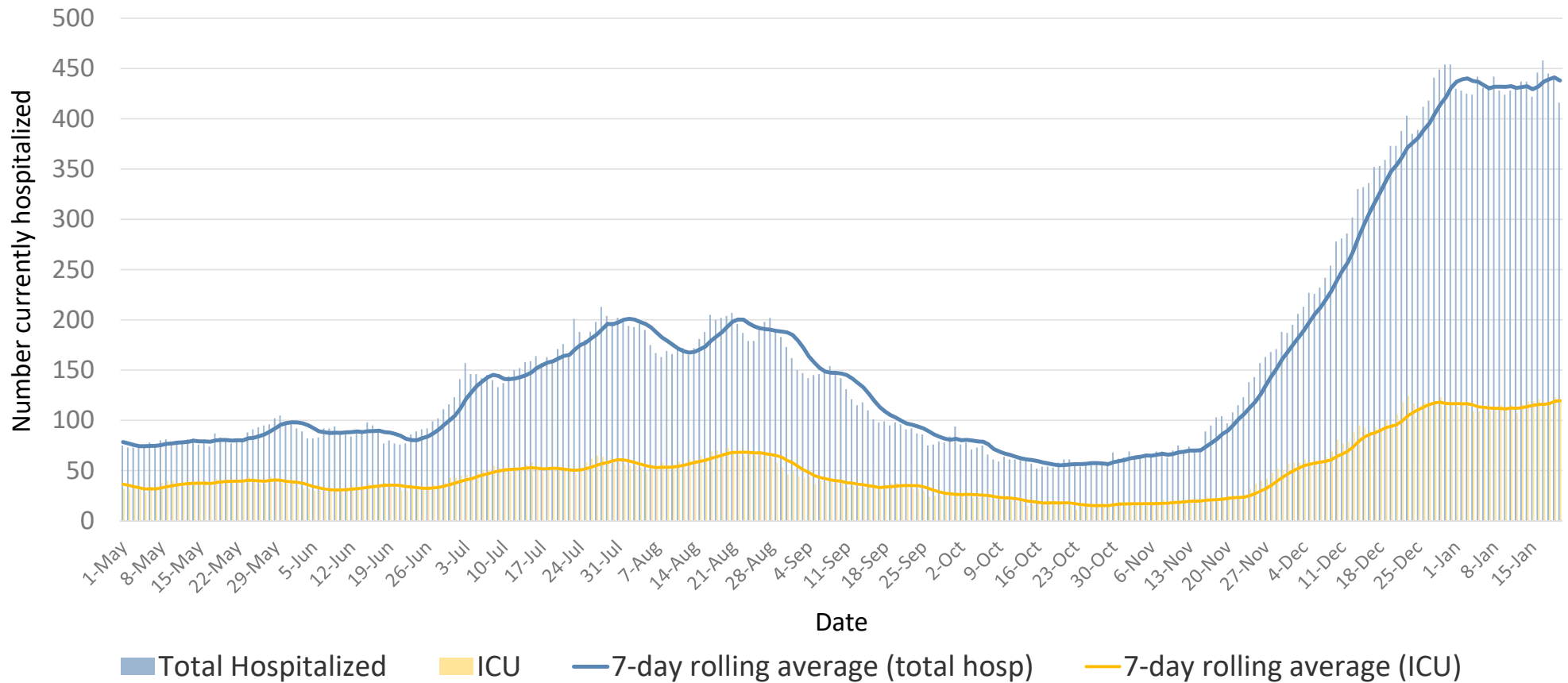


— % positive tests, 7-day rolling average, by specimen collection date — % positive tests in HPI 1, 7-day rolling average, by specimen collection date

Includes City of Berkeley

Sources: 1) CalREDIE Data Distribution Portal download January 21, 2021 9:30 am. 2) Avellino master spreadsheet.

# COVID-19 Patients Currently Hospitalized in Alameda County



Source: California Department of Public Health

# Alameda County COVID Hospitalizations, January 24, 2020

<b>Hospitalized COVID Patients</b>	<b>406</b>
Staffed Inpatient Bed Capacity	2514
Available Beds	931 (37%)
Surge patients	12
<b>ICU COVID Patients</b>	<b>115</b>
Staffed ICU Bed Capacity	438
Adult ICU Availability Incl. Surge	32%



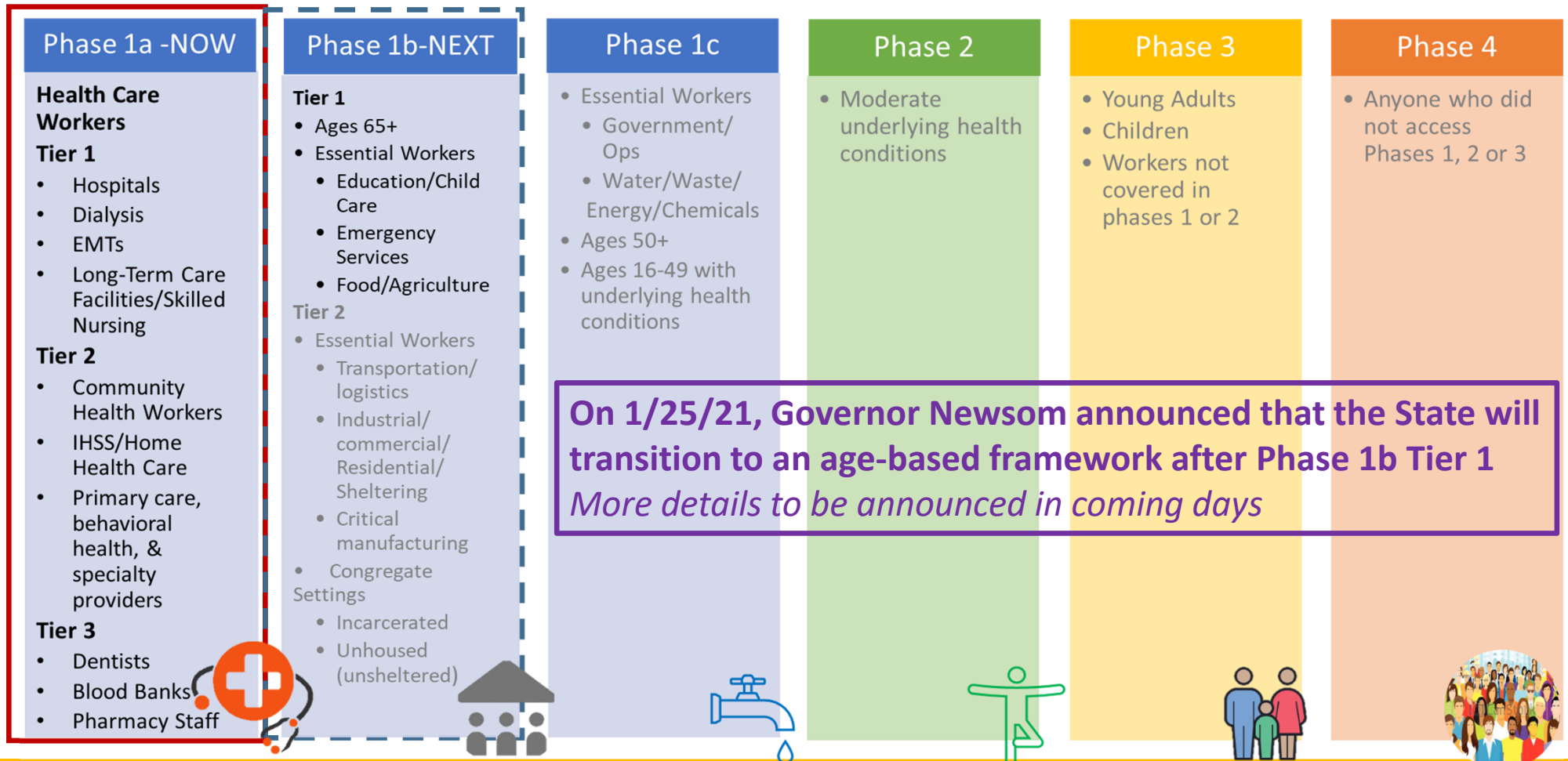
# Restrictions and Reopening

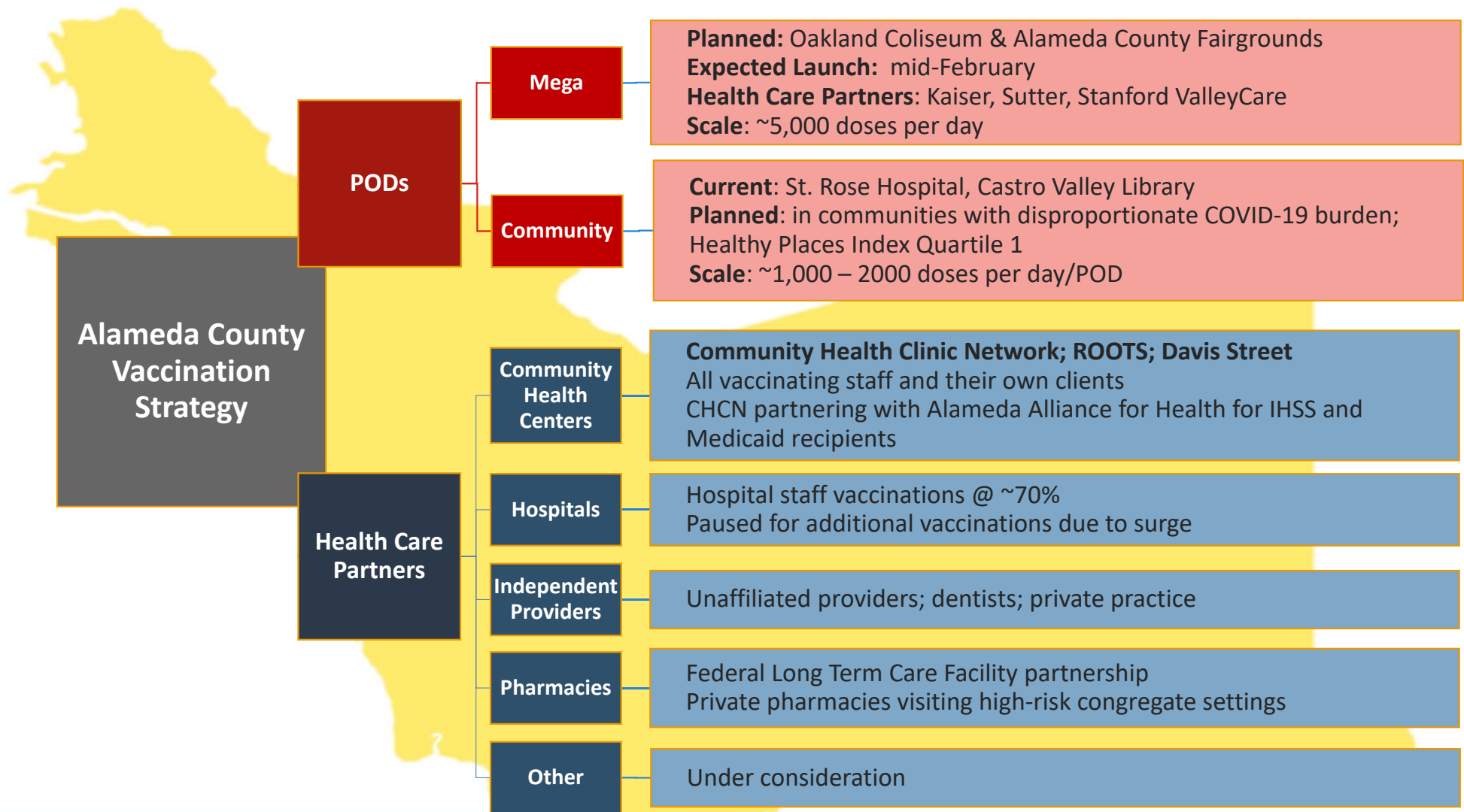
- Regional Stay at Home Order lifted
- County has returned to Purple Tier restrictions
  - Notable open sectors: outdoor dining, zoos, personal services, hair/nail salons
  - Potential to move to Red Tier in matter of weeks; adjusted case rate is ~28
- Schools - State guidance
  - K-6 may open with approved safety plan if adjusted daily Case Rate <25/100,000
  - Other schools may open after 5 days in Red Tier
- Local Health Officer order now focused on general risk reduction
  - Deferring to State for most restrictions and guidance by sector



# Vaccine Update

# Vaccine Prioritization Framework *as of 1/25/21*





## Status of Vaccine in Alameda County as of 1/23/21

<b>Total Doses (1<sup>st</sup> &amp; 2<sup>nd</sup>) received within Alameda County (excluding Berkeley)</b>	<b>102,750</b>
Total Doses allocated to hospitals and other health care entities	63,725
Total Doses received by HCSA/PHD	39,025

<b>Total Doses (1<sup>st</sup> &amp; 2<sup>nd</sup>) received by HCSA/PHD</b>	<b>39,025</b>
1 <sup>st</sup> doses received	23,025
1 <sup>st</sup> doses administered	19,112
Percent of 1 <sup>st</sup> doses administered	83%
1 <sup>st</sup> doses to be administered by HCSA/PHD in the coming week	3,000



## Status of Vaccine in Alameda County as of 1/23/21

<b>Total Doses received within Alameda County (excluding Berkeley)</b>	<b>102,750</b>
First Doses	64,550
Second Doses	38,200

**Approximate size of Phase 1a population in Alameda County – Now** **145,000**

Health care workers, long term care facility residents and staff

**Approximate size of Phase 1b population in Alameda County – early February** **420,000**

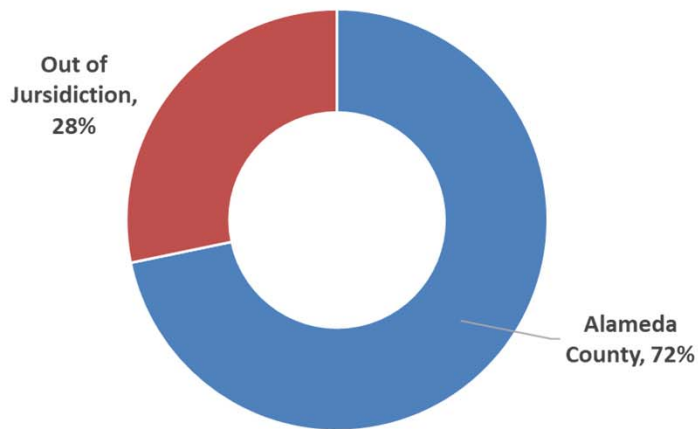
>65 years old, education & childcare, emergency services, food/agriculture



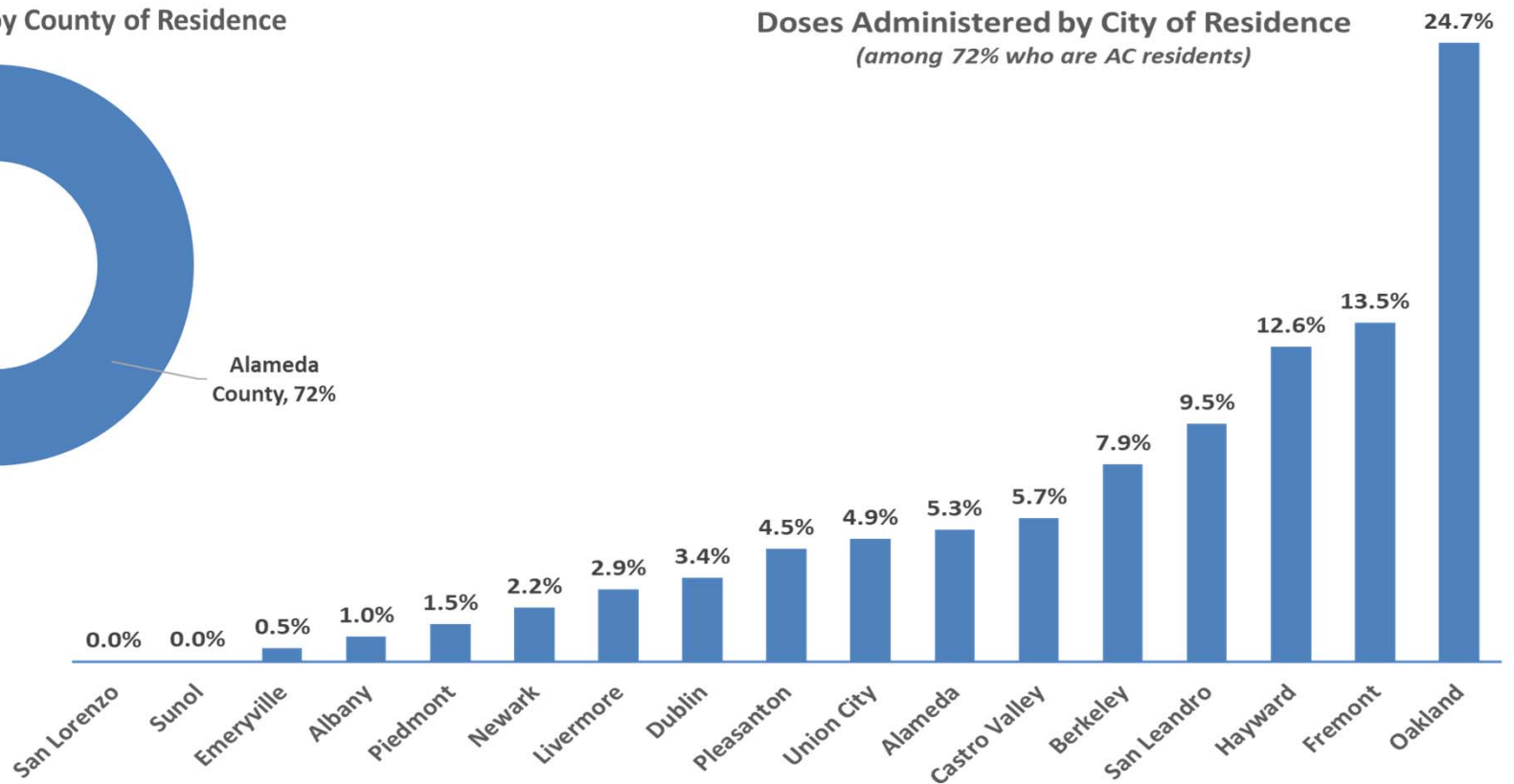
# Vaccination at County PODs, Phase 1a

January 9 – January 22, 2021; n=16,903

Doses Administered by County of Residence



Doses Administered by City of Residence  
(among 72% who are AC residents)



Alameda County  
Health Care Services Agency

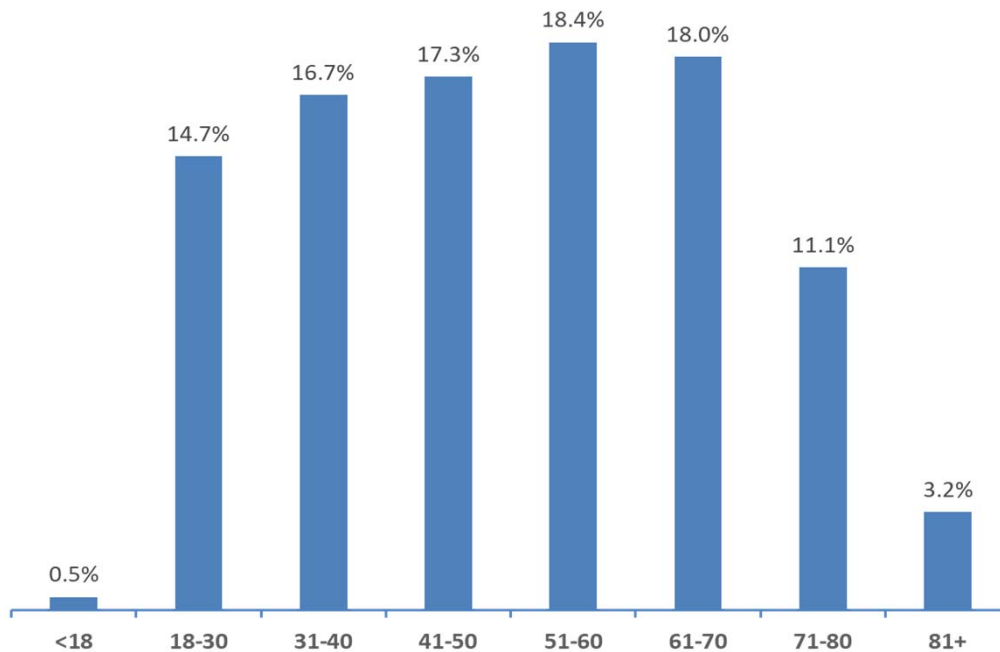


Alameda County Public Health Department  
Celebrating Healthy People in Healthy Communities

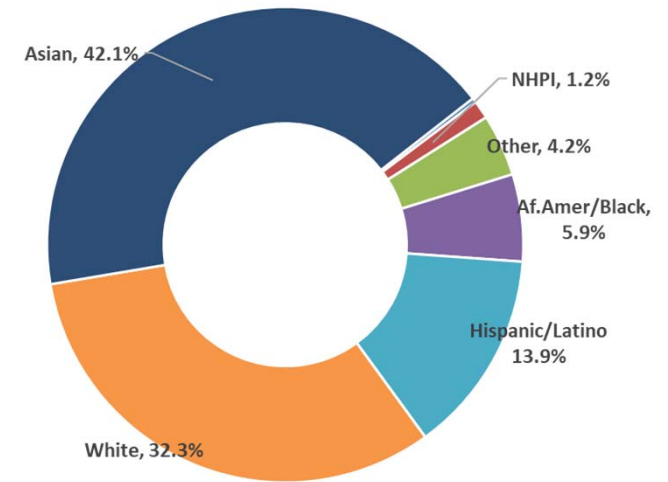
# Vaccination at County PODs, Phase 1a

January 9 – January 22, 2021; n=16,903

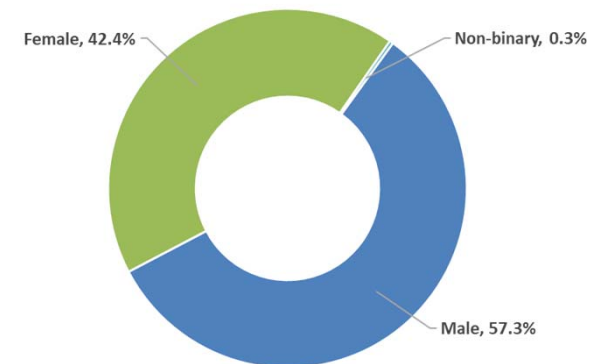
### Doses Administered by Age Group



### Doses Administered by Race/Ethnicity



### Doses Administered by Gender





# How will the public get their vaccine?

## Where will people get vaccinated?

- County points of distribution (PODs)
  - 2 operational now
  - 2 Mass Vaccination Sites (in planning)
  - Community-Based PODs (in planning)
- Health Care Providers *(as supply increases)*
  - Provider's office
  - Community Clinics
  - Urgent Care
  - Hospitals/Multi-County Entities (Kaiser, Sutter updates)

Sign-up for notification →  
<https://covid-19.acgov.org/vaccines>

## How will they know it's their turn?

- Employer
- Medical Insurance
- Public communications/Messaging
- Community Groups
- Medical Care Provider



# Thank you

Questions

[covax@acgov.org](mailto:covax@acgov.org)

<https://covid-19.acgov.org/vaccines>



Alameda County  
Health Care Services Agency



Alameda County Public Health Department  
Celebrating Healthy People in Healthy Communities