

# Alameda County Board of Supervisors

## COVID-19 Update

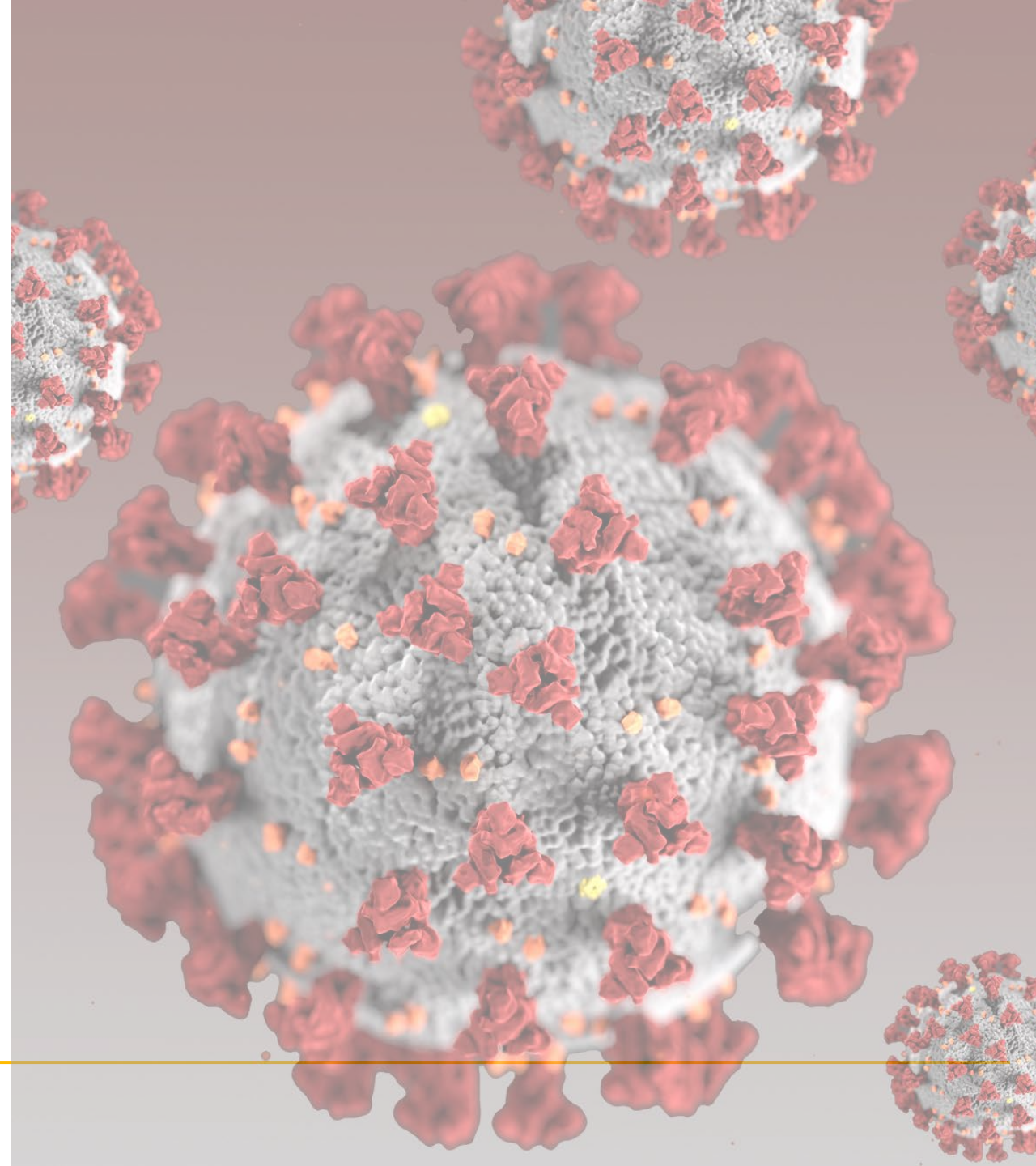
January 12, 2021



Alameda County  
Health Care Services Agency



Alameda County Public Health Department  
Celebrating Healthy People in Healthy Communities

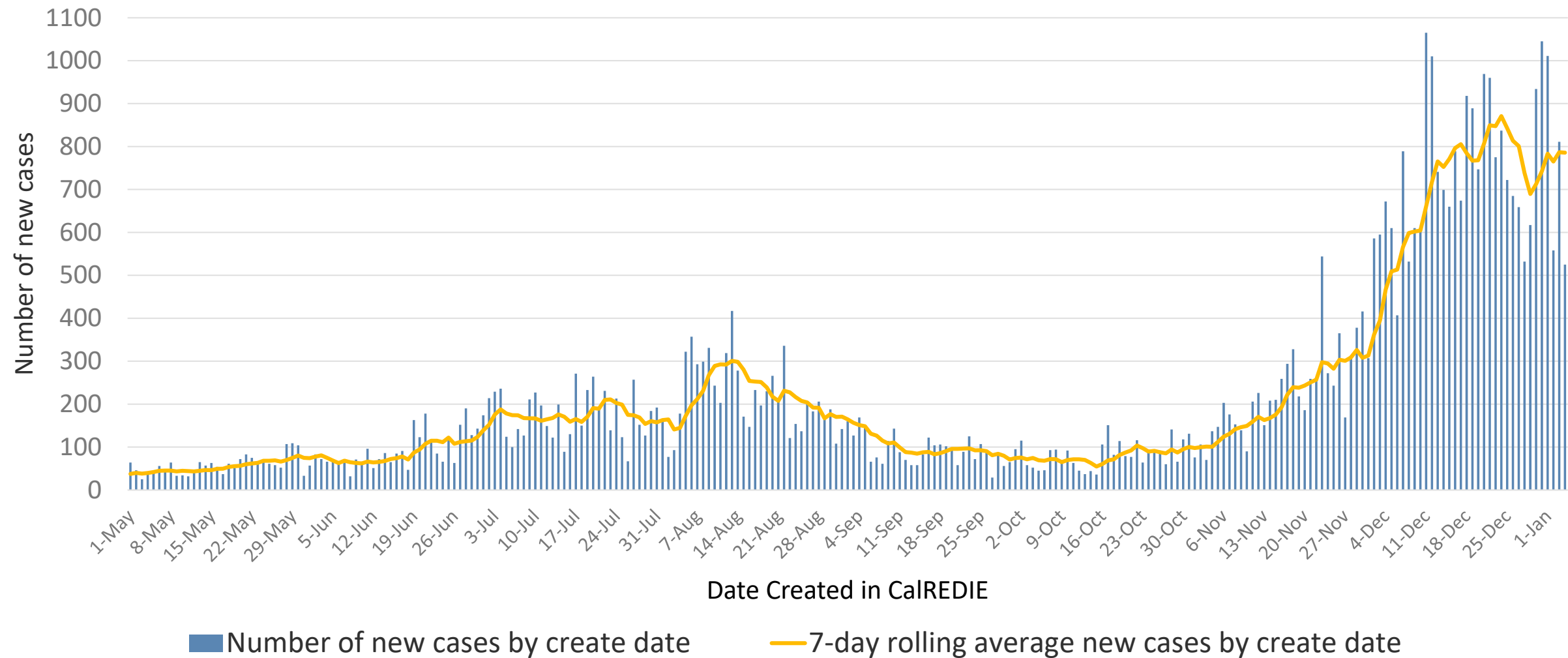


# Current COVID-19 Status in Alameda County

- Case rates increased during the holidays after brief improvement
- Hospitalizations stabilized over past 10 days but remain at high levels
- State Regional Stay at Home Order remains in effect until further notice



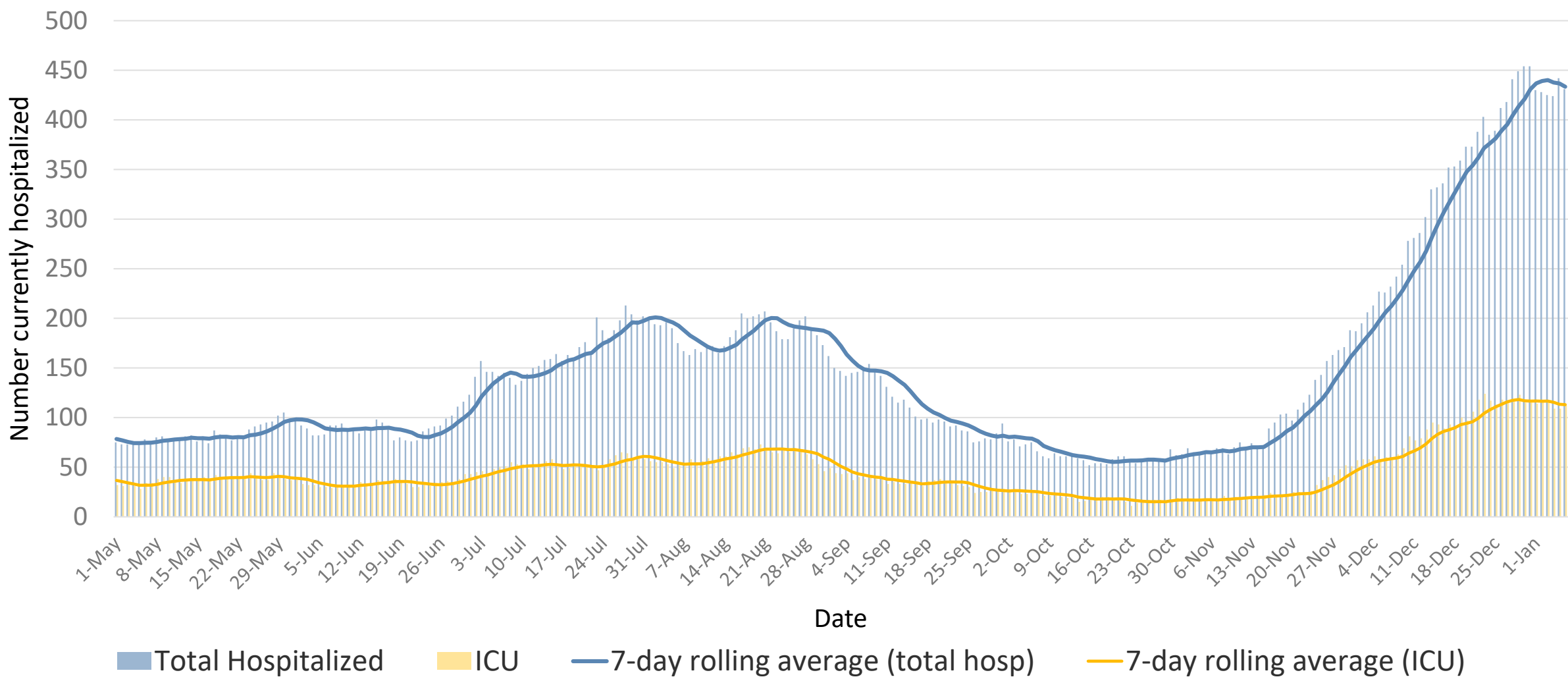
# New Alameda County COVID-19 Cases by date created, 2020-21



Includes City of Berkeley

Source: CalREDIE Data Distribution Portal download January 7, 2021 3:00 pm.

# COVID-19 Patients Currently Hospitalized in Alameda County, 2020-21



Source: California Department of Public Health

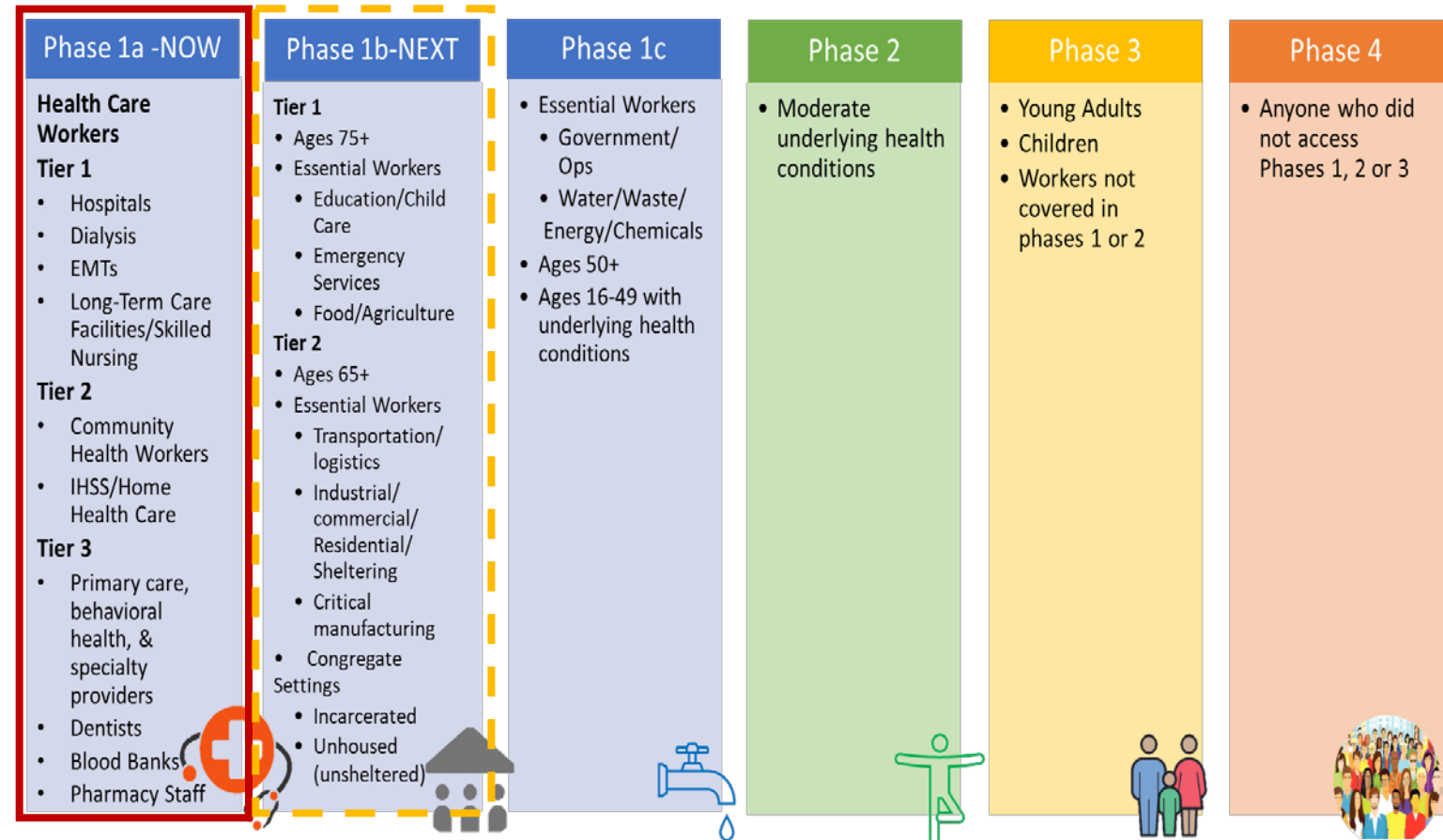
# State's Regional Stay at Home Order

- Remains in effect for the Association of Bay Area Health Officials (ABAHO) region
- State checking 4-week ICU projections daily
- No region has had state order lifted yet
- ABAHO regional metrics
  - Low ICU capacity by state metric with high proportion of COVID cases
  - Hospitalizations holding at high level; could still see holiday impact
  - Case rates rose after holidays
  - Wide variation between counties



# Key COVID-19 Vaccine Activities and Updates

- Currently vaccinating in State's Phase 1a ~**145,000** Alameda County health care and community health workers
- **85,350 doses** received in Alameda County as of 1/11/21 (excluding doses received by multi-county entities beyond their first allocation)
- Vaccine distribution continuing via **point of dispensing (POD) sites**
- As vaccine becomes more available, Alameda County residents will have increased **access to vaccine through their health care provider**



# Status of Vaccine in Alameda County as of 1/11/21

Approximate size of Phase 1a population in Alameda County	145,000
Doses received within Alameda County (excl Berkeley)	53,000 (+32,350 2 <sup>nd</sup> doses)
Doses received by hospitals	23,800 (+22,200 2 <sup>nd</sup> doses)
Doses received by other health care entities	1,800 (+0 2 <sup>nd</sup> doses)
Doses received by HCSA/PHD	27,400 (+10,150 2 <sup>nd</sup> doses)
Doses redistributed to other health care entities	3,250 (+0 2 <sup>nd</sup> doses)
Doses administered by HCSA/PHD as of 1/10/21	7,466 (+1,700 2 <sup>nd</sup> doses)
Estimated doses to be administered by HCSA/PHD this week	4,525 (+275 2 <sup>nd</sup> doses)



# Other Key COVID-19 Activities and Updates

- **Governor's proposed budget**
  - Released 1/8/21
  - Includes ~\$300 million for vaccine distribution, though no detail on allocation is provided
  - No new investments for local public health departments identified
- Alameda County **Vaccine Community Advisory Group** meeting 5pm tonight
  - Meeting information is here: <https://covid-19.acgov.org/community-advisory-group>
- **Vaccine dashboard** to be available the ACPHD COVID-19 website this week
- Updating **mass vaccination plan**
- **Website updates:**
  - FAQs: <https://covid-19.acgov.org/vaccines-faq>
  - Online vaccine interest forms for health care providers, employers, residents: <https://covid-19.acgov.org/vaccines>

# Thank you

Questions