

Alameda County Board of Supervisors

COVID-19 Update

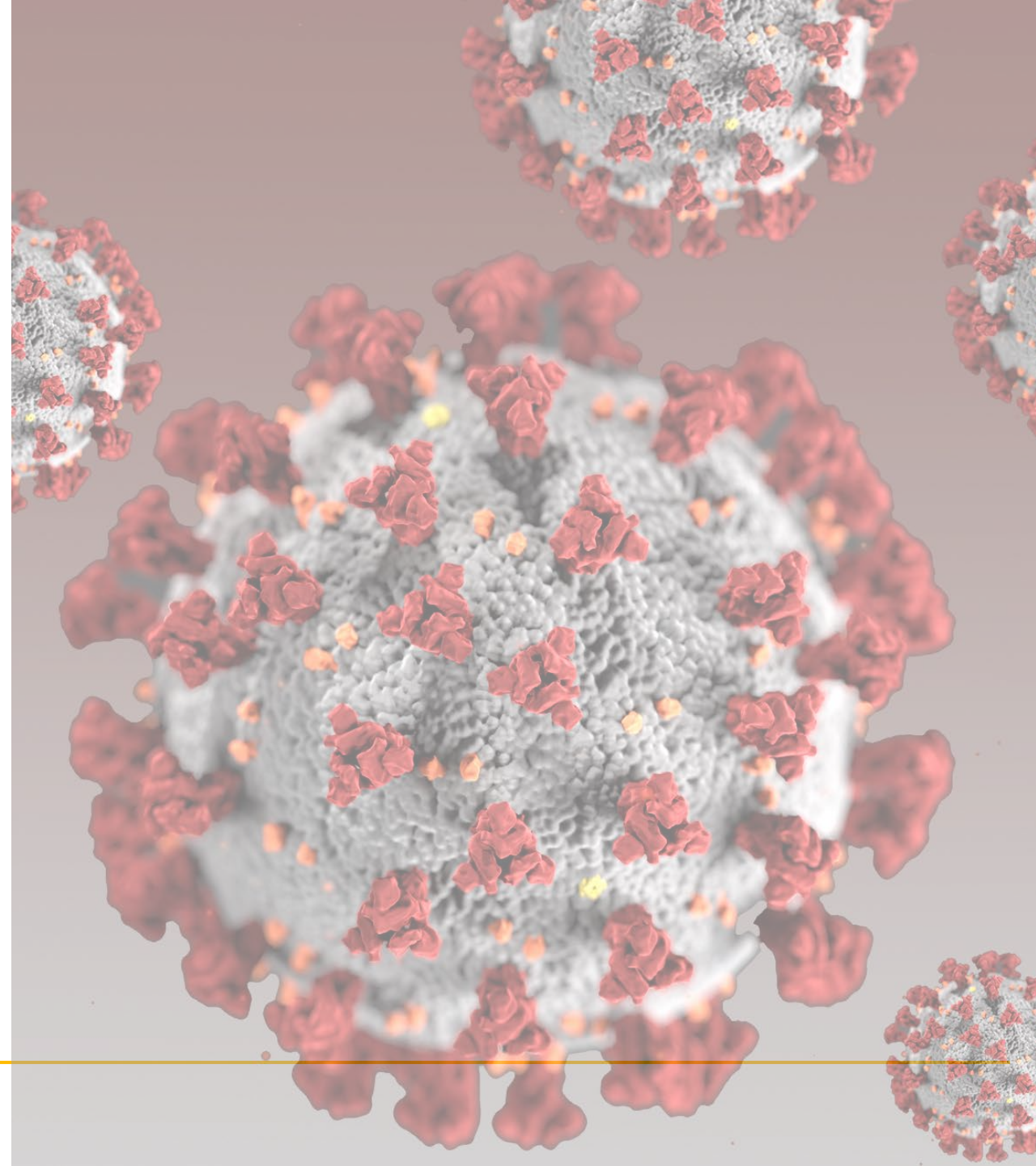
January 5, 2021



Alameda County
Health Care Services Agency

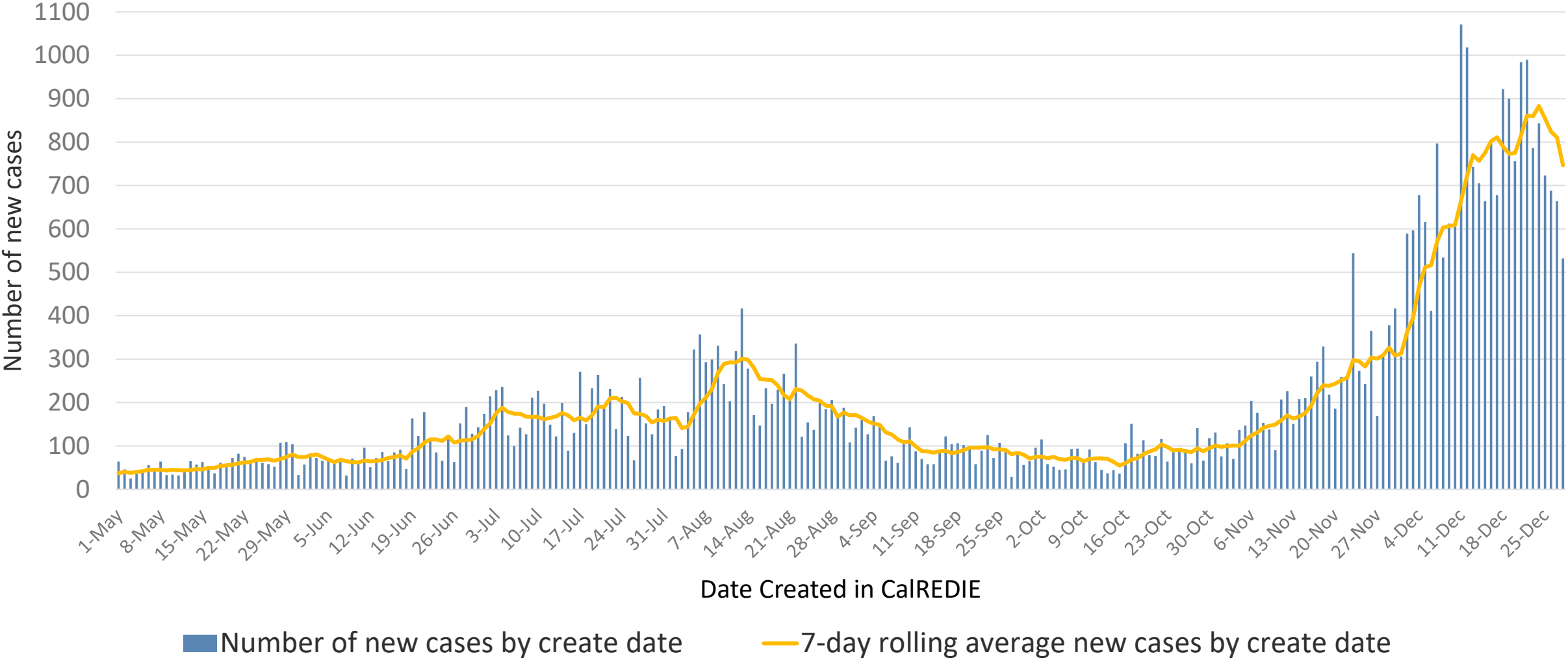


Alameda County Public Health Department
Celebrating Healthy People in Healthy Communities



Local COVID-19 Data

New Alameda County COVID-19 Cases by date created, 2020

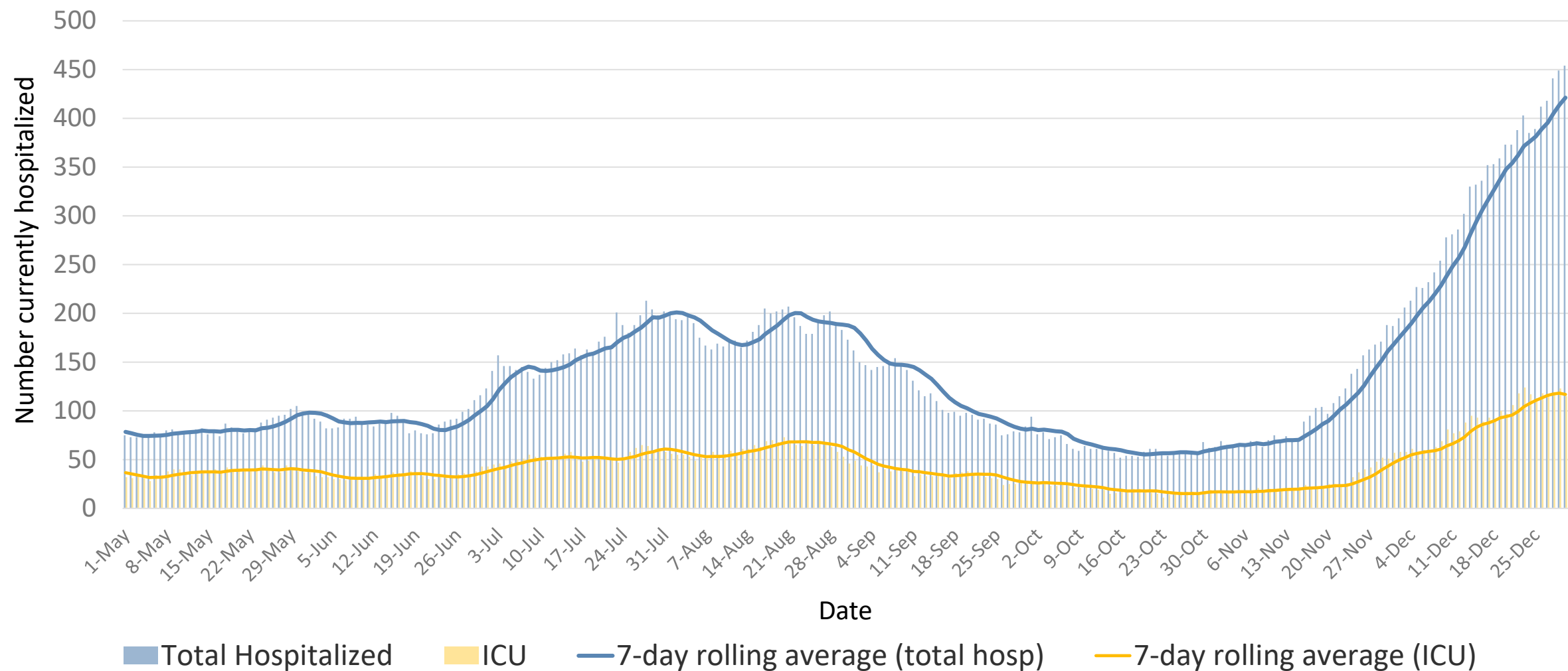


Includes City of Berkeley

Source: CalREDIE Data Distribution Portal download December 31, 2020, 9:15 am.



COVID-19 Patients Currently Hospitalized in Alameda County, 2020



Source: California Department of Public Health



Alameda County COVID Hospitalizations, January 3, 2020

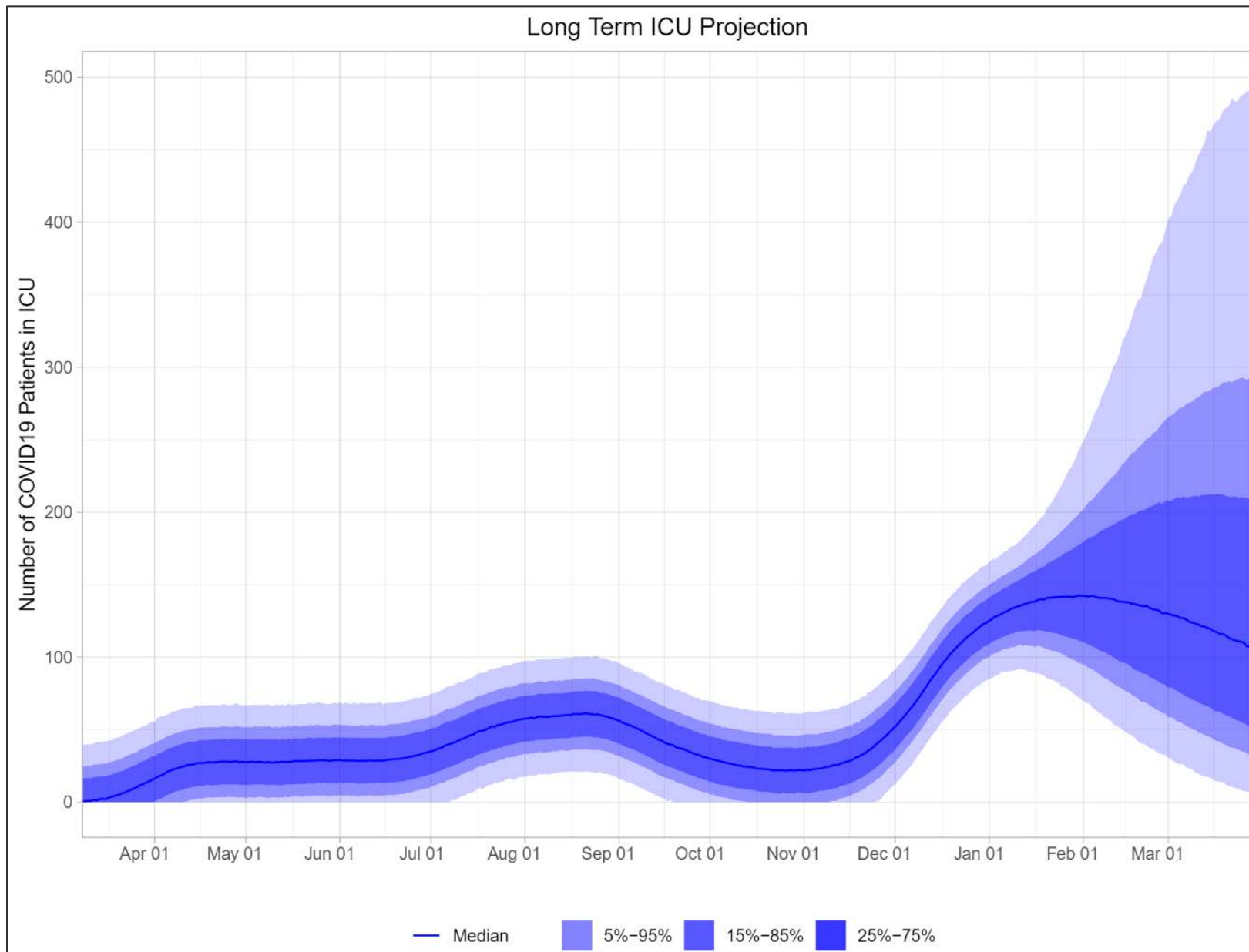
Hospitalized COVID Patients	425
Staffed Inpatient Bed Capacity	2473
Available Beds	878 (36%)
ICU COVID Patients	116
Staffed ICU Bed Capacity	429
Available ICU Beds	131 (30.5%; Adult 18.5%)
Bay Area Region ICU Bed Availability	7.9%

State Stay at Home Orders

State Regional Stay at Home Order

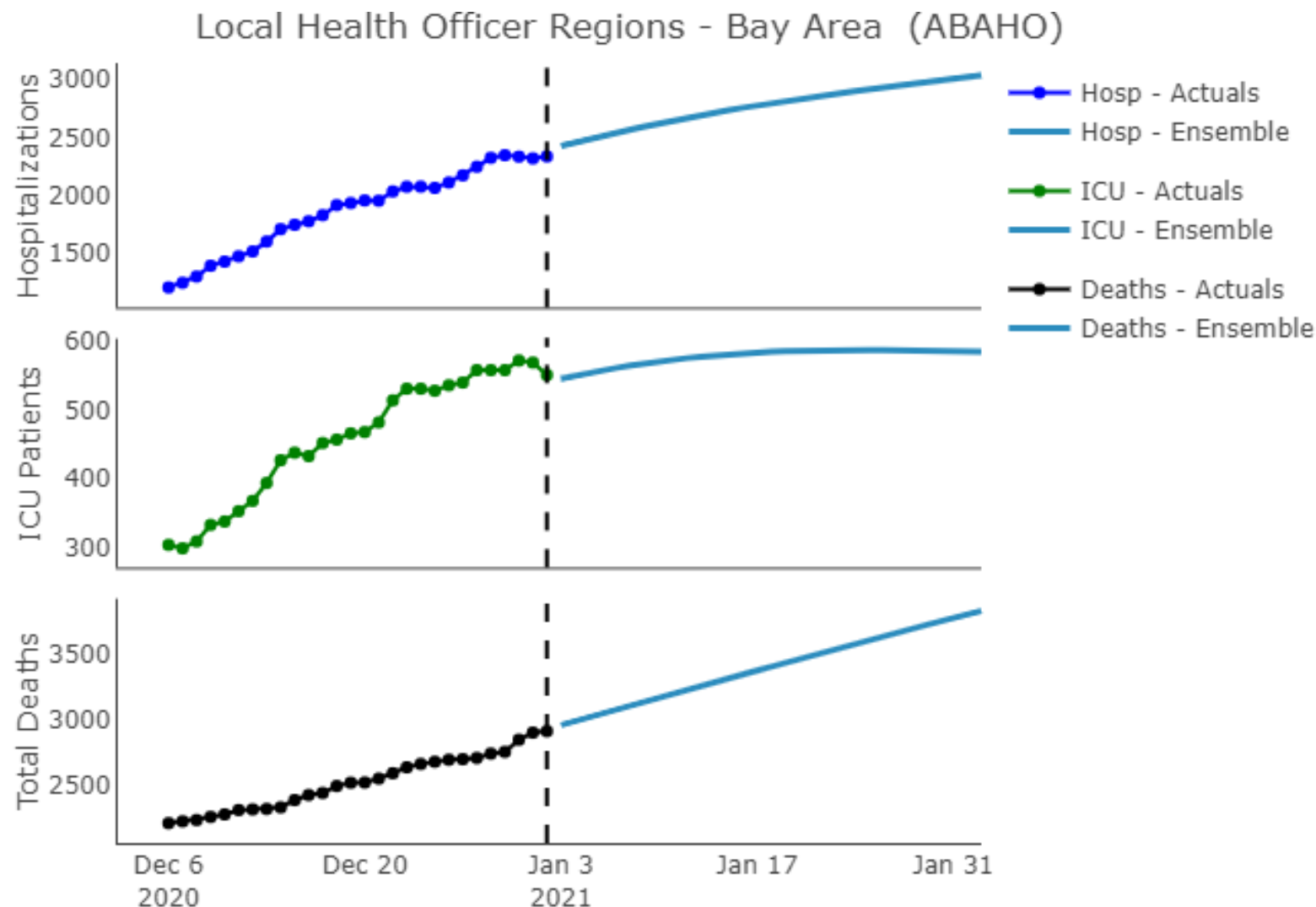
- State's Regional Stay at Home Order remains in effect
- Coming out of the State's Stay at Home restrictions
 - No earlier than 1/8/21 for Alameda County
 - Based on state projections of regional ICU bed availability
 - Lifted once region is projected to exceed 15% ICU capacity within 4 weeks
 - Each county will then be placed in appropriate color Tier based on local data
- Adhering to state restrictions as closely as possible for the present





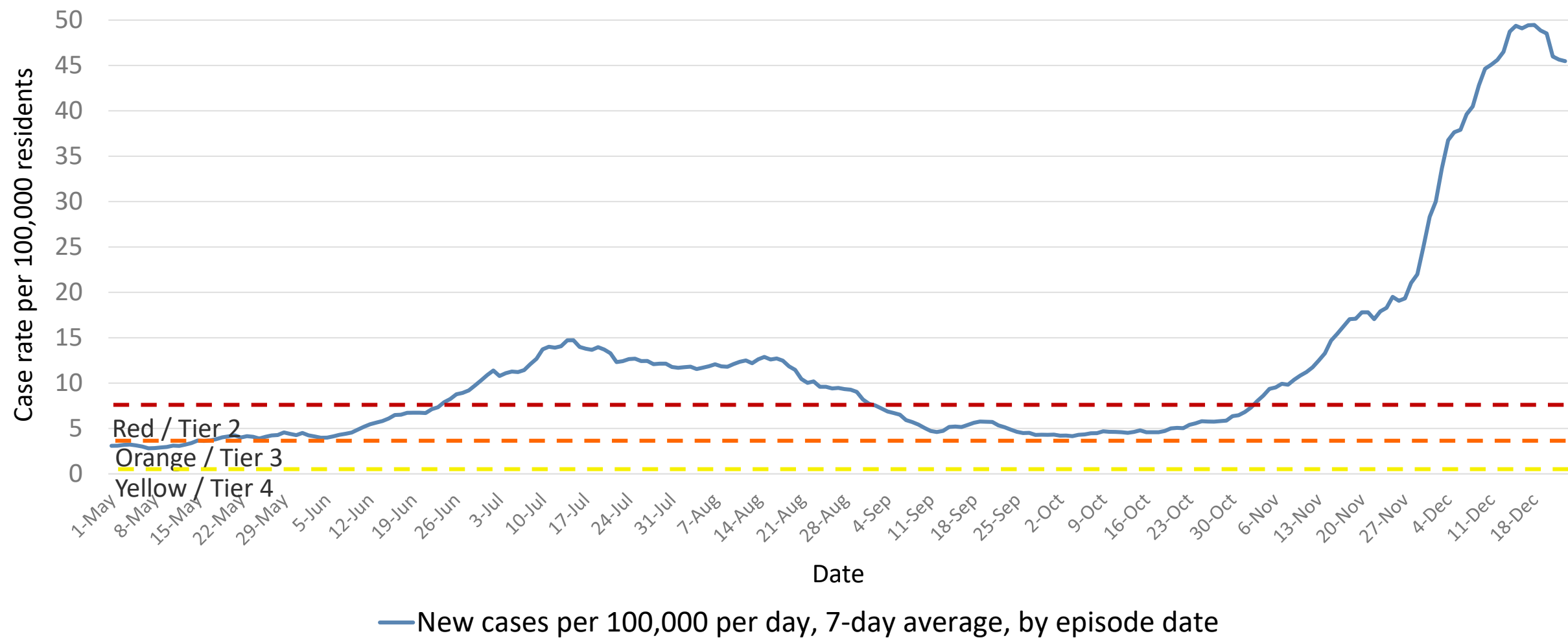
Source:
<https://github.com/LocalEpi/LEMMA-Forecasts/blob/master/Forecasts/Alameda.pdf>
Accessed January 4, 2021;
Fit using data through
January 3, 2021

ABAHO Regional Hospital and ICU Projections, January 2, 2021



Source: [CalCAT](#). Accessed January 4, 2021; Fit using data through January 2, 2021

Alameda County COVID-19 Daily Case Rate, 2020



Includes City of Berkeley

Source: CalREDIE Data Distribution Portal download December 31, 2020 9:15 am.

Other State Actions

- Crisis Standards of Care All Facilities Letter released
 - Requires facilities to post crisis care plans and alert LHJ to changes in care status
 - LHJ should facilitate support across facility network to avoid crisis care
- Schools Announcement
 - School funding – prioritizing TK-2 and disproportionately impacted
 - More support for testing (staff and students), PPE, contact tracing, vaccination
 - More state TA for schools/districts/LEAs

Variant Virus Update

UK Variant SARS CoV-2

- Detected in CA and multiple US states – wider spread in US not yet shown
- Detected in multiple countries
- Modeling studies suggest this variant is more transmissible
 - May bind to human airway cells slightly better
 - May also have higher concentration in airways
- Nothing to suggest more severe disease
- Not expected to affect vaccine efficacy
- The same tools will contain this variant
 - Face coverings
 - Physical distancing



Vaccine

Vaccine Prioritization Framework—*updated 1.3.21*

- ❖ Subject to change per pending Federal and State recommendations
- ❖ Timing depends on vaccine supply and demand
- ❖ Local health departments have *some* discretion within phases

- **1a: Health care workers, community health workers & long term care facility residents and staff**
- **1b: Essential workers; people 75+ years old; incarcerated; unhoused**
- **1c: Government Ops; Older adults 65-74; people aged 16-64 at significantly higher risk due to underlying health conditions**

Phase 1



- Staff and residents of: **congregate settings and group homes** for people with disabilities or serious mental illness
- **People at moderate risk** due to underlying health conditions

Phase 2



- **Young adults**
- **Children**
- **Workers not covered in Phases 1 or 2**

Phase 3



- **Anyone who did not access vaccine in Phases 1, 2, or 3**

Phase 4



Equity is cross-cutting issue





Who's in Phase 1a?

Phase 1a: Health Care Workers, Community Health Workers, Long-term care facility residents and staff
~147,660 people in Alameda County

The Public Health Department is reaching out to eligible health care workers as vaccine becomes available.

Tier 1 (vaccination started in mid-December):

- Acute care, psychiatric and correctional facility hospital staff
- Staff and residents of skilled nursing facilities, assisted living facilities, and similar settings for older or medically vulnerable individuals
- Paramedics, EMTs and others providing emergency medical services
- Dialysis centers

Tier 2 (vaccine started late December):

- Intermediate Care Facility staff & residents
- Home Health Care/In-Home Supportive Services
- Community Health Workers/Promotoras
- Public Health Field Staff (including Testing Site Staff)
- Primary Care Clinics, including Federally Qualified Health Centers, Rural Health Centers, Correctional Facility Clinics & Urgent Care Clinics

Tier 3 (vaccination not yet started):

- Specialty Clinics
- Laboratory Workers
- Dental/Oral Health Clinics
- Pharmacy Staff (non-Hospital)



Status of Vaccine in Alameda County as of 1/3/21

Approximate size of Phase 1a population in Alameda County	147,660
Doses received within Alameda County (excl Berkeley)	60,075 (incl 12,675 2 nd doses)
Doses received by hospitals	32,925 (incl 10,725 2 nd doses)
Doses received by HCSA/PHD	27,150 (incl 1,950 2 nd doses)
Doses administered by HCSA/PHD as of 1/3/21	3,695
Estimated doses to be administered by HCSA/PHD this week	4,000



What's being planned for Phase 1b and 1c?

updated 1/3/21; State priorities not yet finalized

Phase 1b: Essential Workers & People at risk for severe illness (~240,000 Alameda County residents)

Tier 1:

- Older adults, aged 75+
- Education & child care
- Emergency Services
- Food/agriculture

Tier 2:

- Critical manufacturing
- Facilities & services
- Transportation and logistics
- Older adults, aged 64-75
- Incarceration settings
- People experiencing homelessness

Phase 1c: People with high-risk conditions (~650,000 Alameda County residents)

- Cancer
- Chronic kidney disease
- COPD (chronic obstructive pulmonary disease)
- Heart conditions
- Solid organ transplant
- Obesity (BMI>40 kg/m²)
- Pregnancy
- Sickle cell disease
- Smoking
- Type 2 diabetes mellitus
- Adults >50 yo, congregate/overcrowded settings



Looking Ahead

Pending State Guidance:

- Finalization of Phase 1b prioritization
 - Under review by Drafting Guidelines Workgroup
 - State's Community Vaccine Advisory Committee meeting on 1/6/21
- Feasibility/utility of one-dose strategy
 - Western States Scientific Review Group meeting 1/4/21 to discuss
- Potential mass vaccination resources/supports

Key Activities in Alameda County:

- Community Advisory Group meeting 1/12/21
- IHSS workers vaccination (~26k)
- Vaccine data dashboard in development



Thank you

Questions