



CORONAVIRUS UPDATES

Get the latest news from our Public Health Department

COVID-19 (Novel Coronavirus) Update

Board of Supervisors Meeting
July 28, 2020

Colleen Chawla

Director

Health Care Services Agency



Alameda County
Health Care Services Agency



Alameda County Public Health Department
Celebrating Healthy People in Healthy Communities



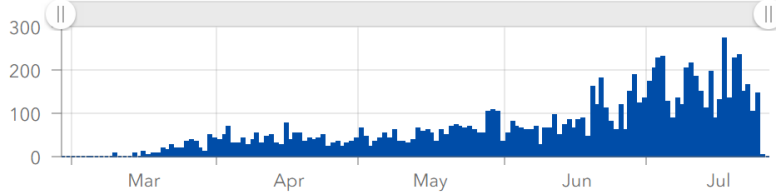
Alameda County COVID-19 Dashboard Updated 7/27/2020 with data through the end of 7/26/2020

Alameda County LHJ

10,075
Cases

175
Deaths

Alameda County LHJ Daily Cases



Cumulative

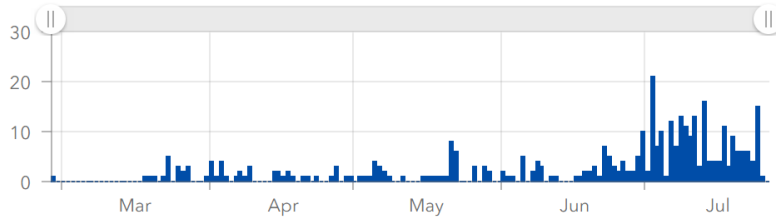
Daily

Berkeley LHJ

363
Cases

3
Deaths

Berkeley LHJ Daily Cases



Cumulative

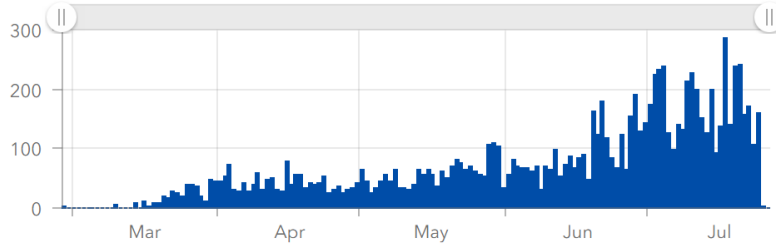
Daily

Alameda County Total

10,438
Cases

178
Deaths

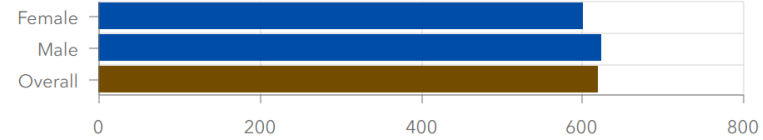
Alameda County Total Daily Cases



Cumulative

Daily

Alameda County Total Case Rates per 100,000 Population by Gender

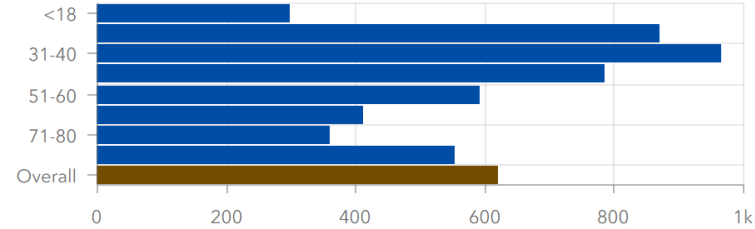


Reported transgender, other, and unknown gender identities are each less than ten and so are suppressed

Cases

Case Rates

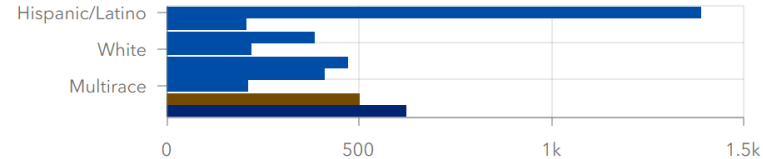
Alameda County Total Case Rates per 100,000 Population by Age Group



Cases

Case Rates

Alameda County Total Case Rates per 100,000 Population by Race/Ethnicity



Since the race/ethnicity is unknown for about 20% of cases, the proper comparison for each race/ethnicity is to Overall Known Race/Ethnicity.

Cases

Case Rates

[Click here to go to our mobile dashboard.](#)

[Click here to go to our second dashboard with data on deaths, hospitalizations, and cases and case rates by zip code.](#)

[Click here to go to a third](#)

Alameda County Cases by City/Jurisdiction

Alameda County: 10438

Berkeley LHJ: 363

Alameda County LHJ: 10075

Under Investigation: 392

Homeless: 114

Address Unknown: 60

Alameda: 162

Albany: 28

Dublin: 112

Emeryville: 50

Fremont: 574

Hayward: 1513

Livermore: 429

Newark: 242

Oakland: 4156

Piedmont: 23

Pleasanton: 219

Cases

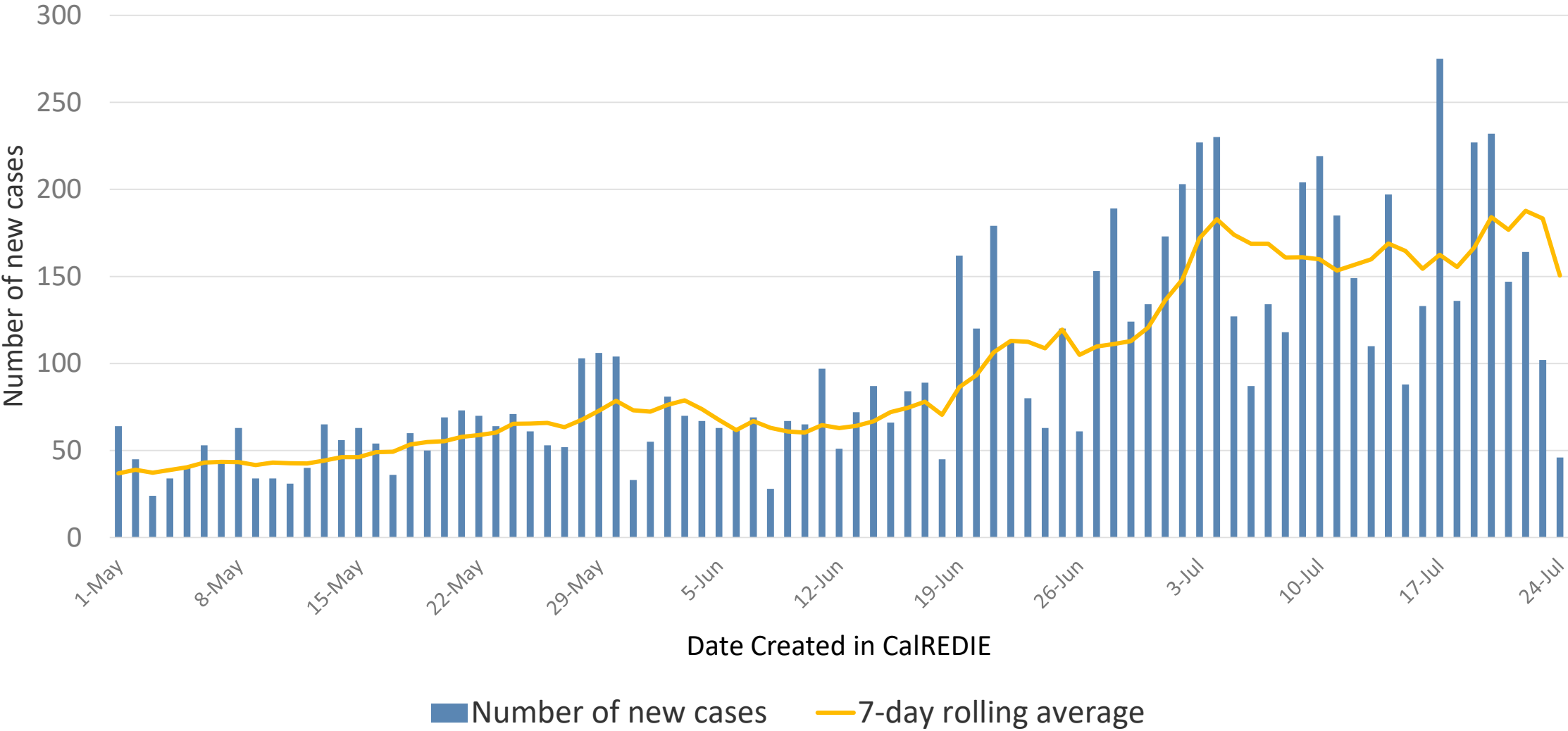
Case Rates

■ (-) ■■ ■■■ ■■■■ ■■■■■ (+)

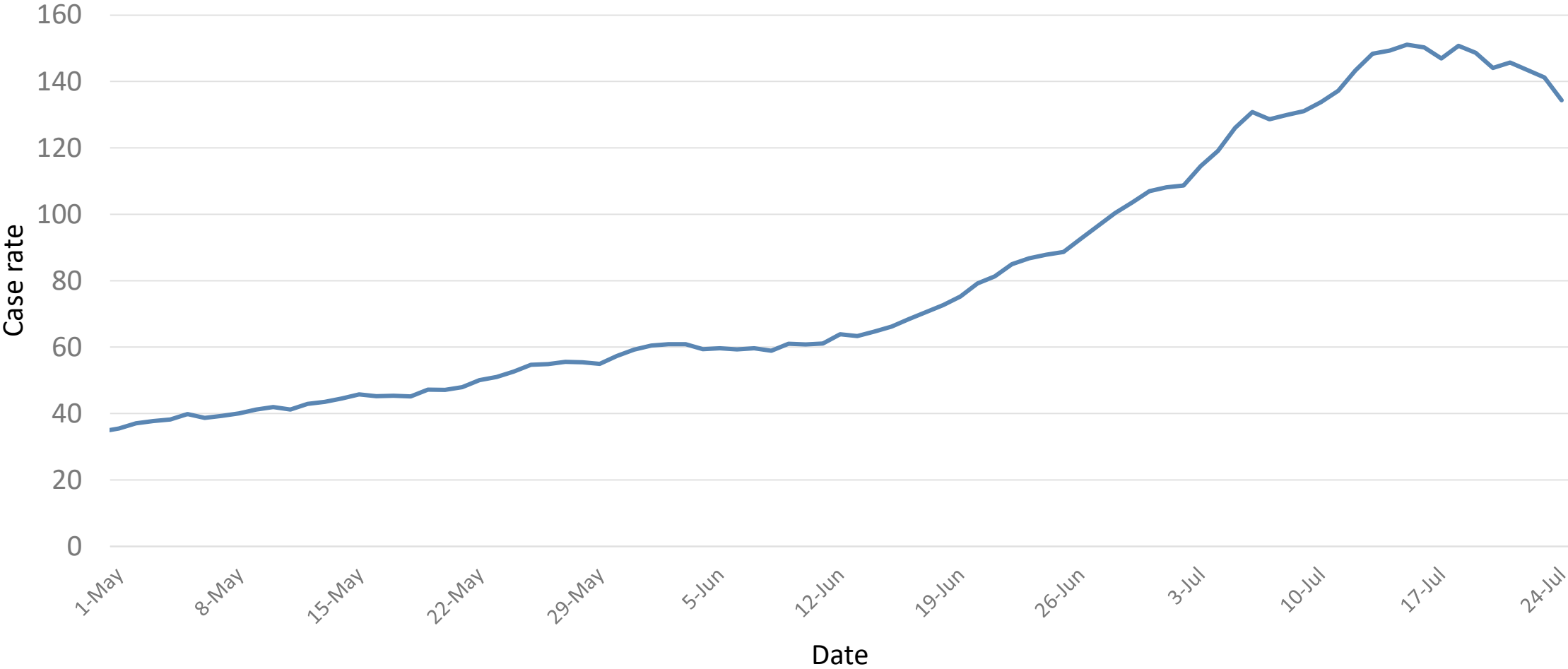
■ (-) ■■ ■■■ ■■■■ ■■■■■ (+)

	Cases & Hospitalizations Flat or Decreasing	Sufficient Hospital & Surge Capacity	Sufficient Testing Capacity	Sufficient Disease Containment	Sufficient PPE
Indicator Status	<div><div></div><div></div></div>	<div><div></div><div></div><div></div><div></div><div></div></div>	<div><div></div><div></div><div></div><div></div></div>	<div><div></div><div></div></div>	<div><div></div><div></div></div>
Trends & Data	<ul style="list-style-type: none">9,051 cases161 cases hospitalized7-day avg % change in daily hospitalizations 1.6% (goal <5%)Rates of new cases and hospitalizations continue to be elevated	<ul style="list-style-type: none">1,324 (47%) inpatient hospital beds available929 (100%) surge beds available	<ul style="list-style-type: none">7-day avg positivity rate: <5% (goal <8%)7-day avg 3,234 tests/day (goal 3,100/day)75% of residents w/in 30min drive to site	<ul style="list-style-type: none">93 case investigation & contact tracing staff (goal 300)1,020 isolation /quarantine rooms (goal 1,203)Special settings teams: LTCF, Outbreaks, Jail, Encampments	<ul style="list-style-type: none">158 requests for PPE in last 14 days (goal 0)344 requests for PPE in last 30 days (goal 0)

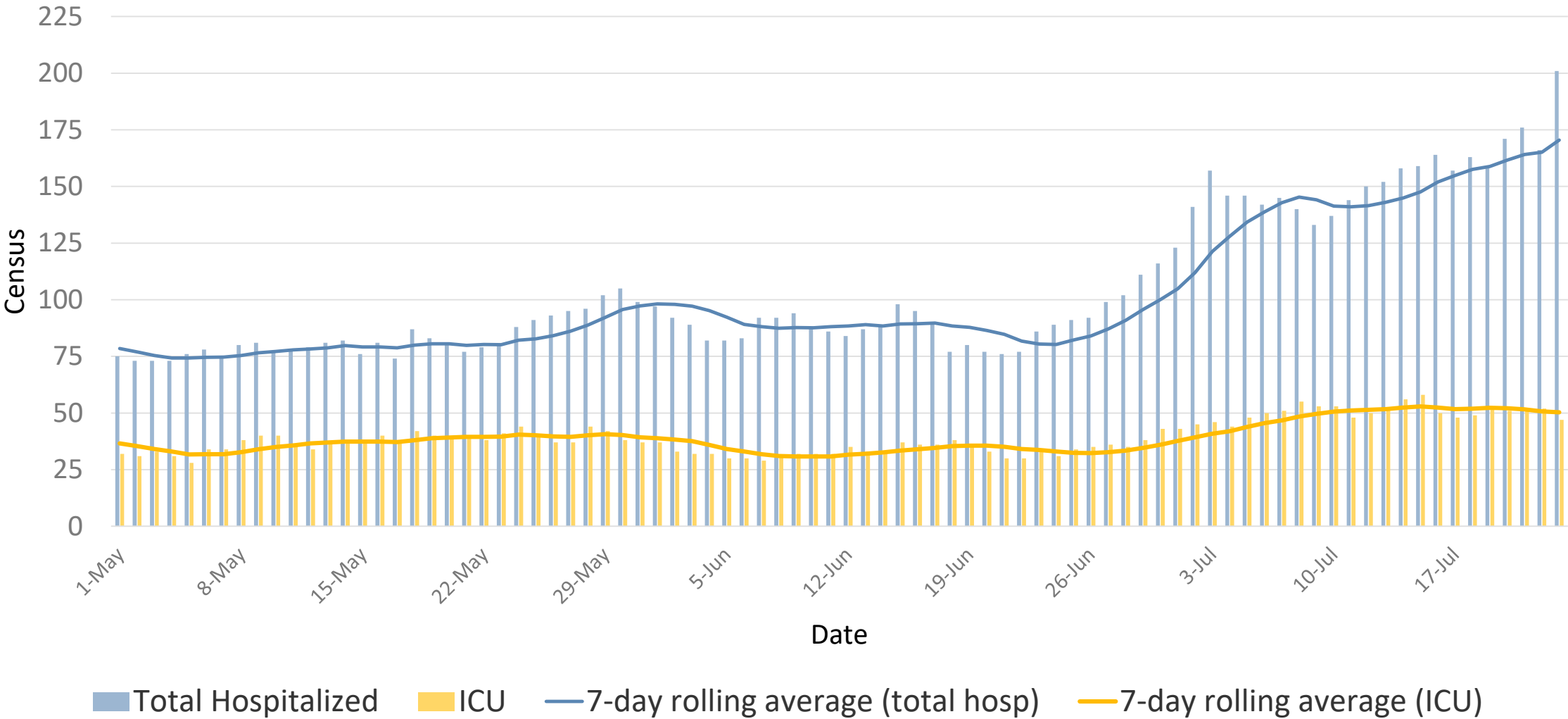
New Alameda County COVID-19 Cases, 2020



Alameda County 14-day Cumulative COVID-19 Case Rate with 3 day lag, by episode date, 2020



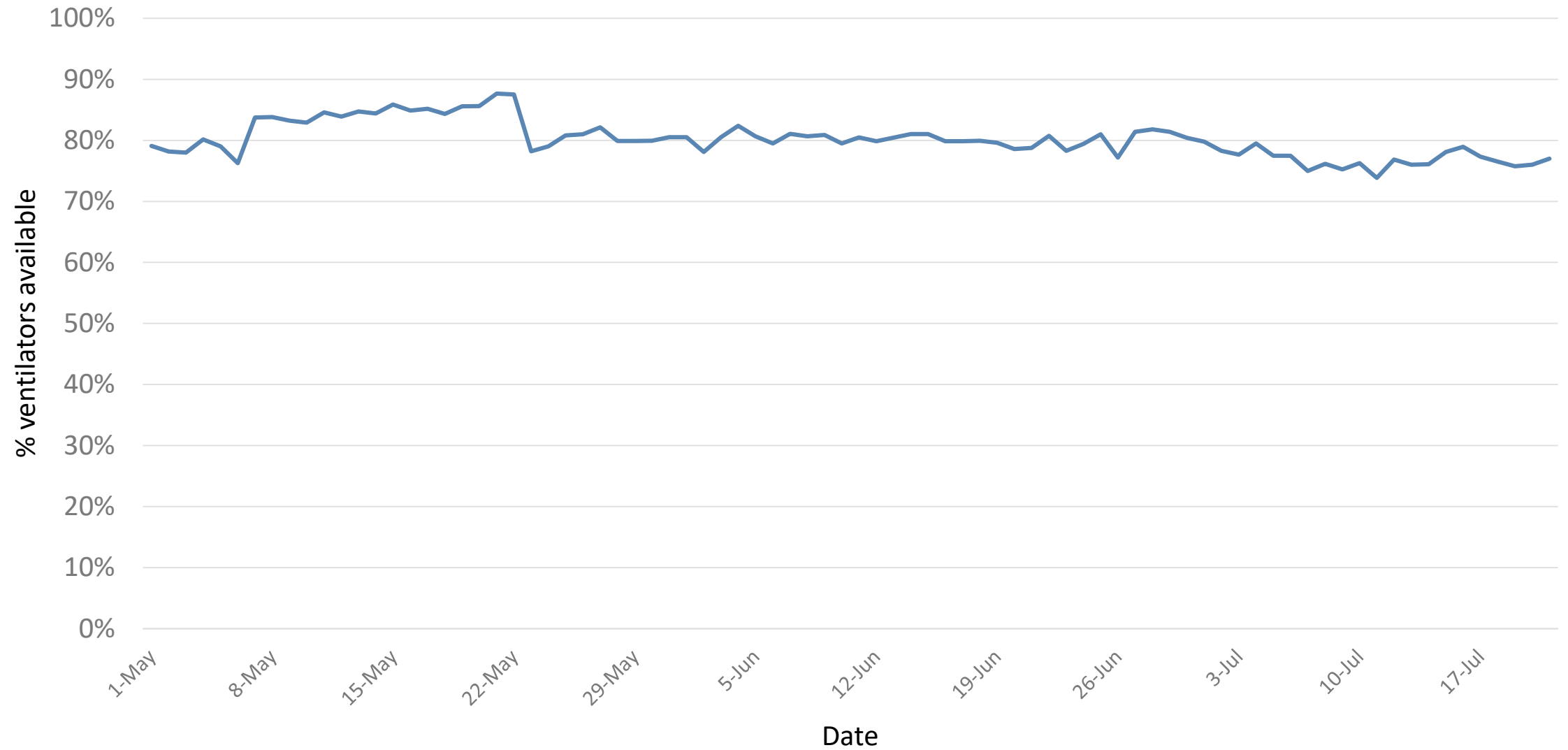
COVID-19 Patients Hospitalized in Alameda County, 2020



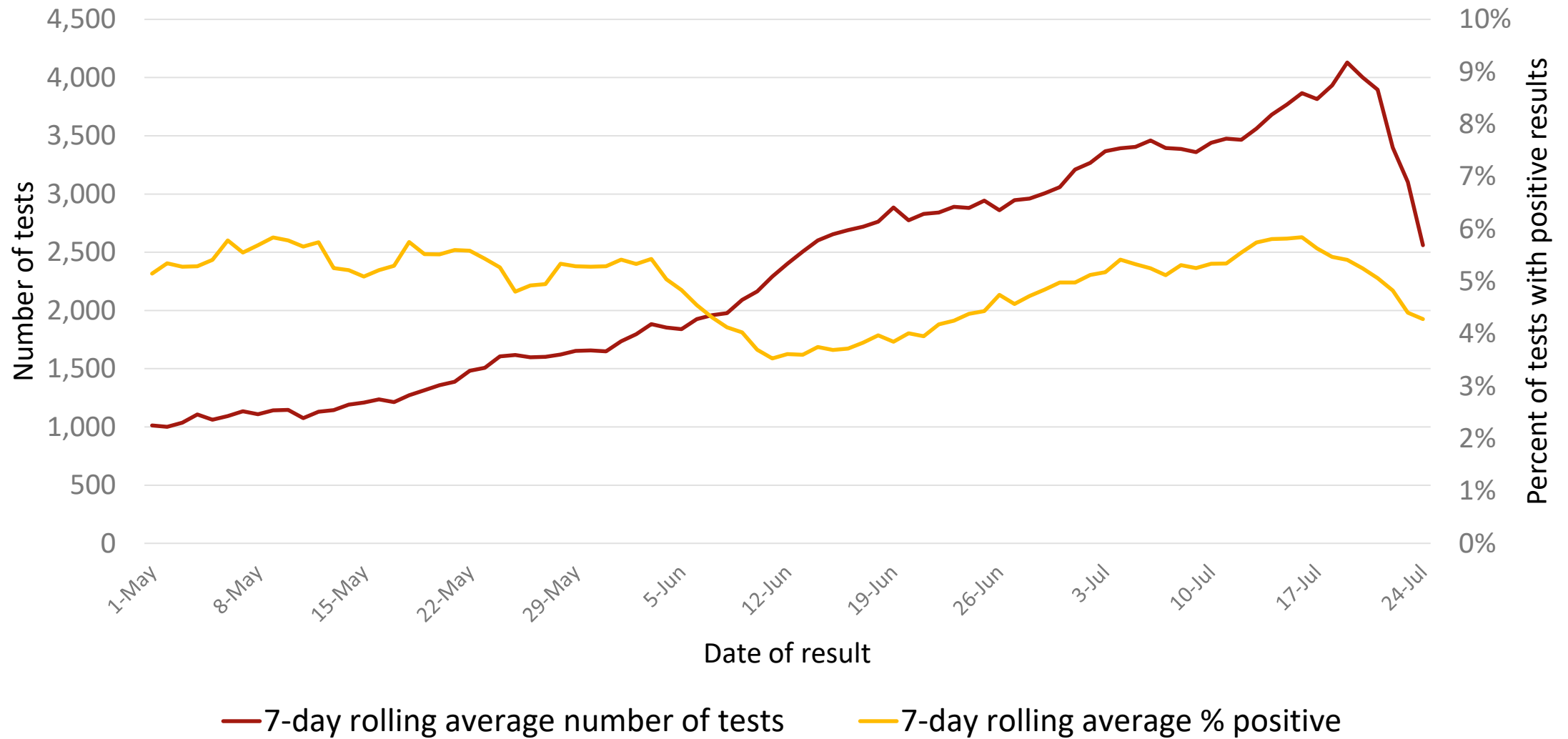
Alameda County Percent ICU Beds Available, 2020



Alameda County Percent Ventilators Available, 2020

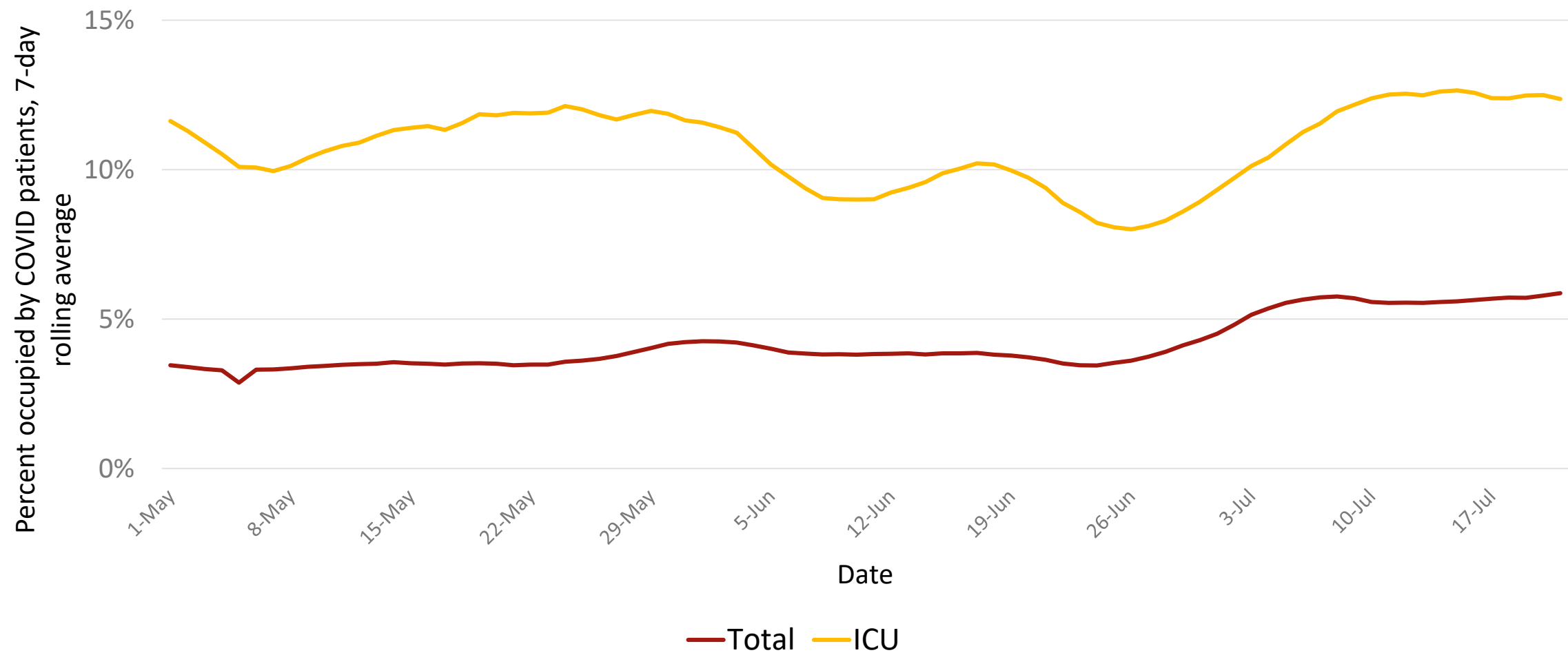


Alameda County COVID-19 Testing



Percent hospital beds occupied by COVID-19 patients, Alameda County, 2020

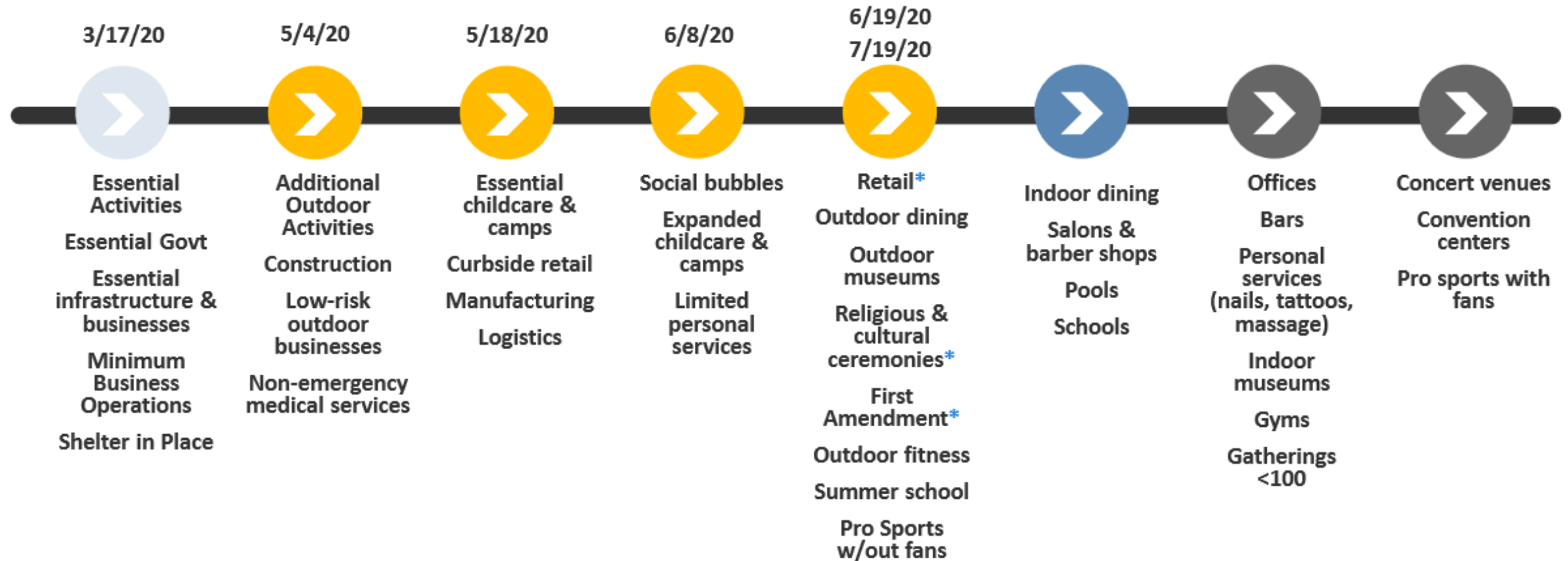
7-day rolling average



Alameda County Reopening Plan

Added to the State's Monitoring List on 7.12.20, activities with * [subject to restrictions per State Orders](#)

[Variance approved on 7.15.20, and reopening remains paused](#) due to continued elevated disease transmission and State restrictions



Face Coverings, Physical Distancing, and Site Specific Protection Plans Required – Stay in your Community



COVID-19 Risk

Lowest

Outdoor space
No physical contact
No shared surfaces

Moderate

Small outdoor gatherings
Physical distancing
Brief contact
Low mixing in community

High

Small indoor gatherings
Poor ventilation
Large outdoor gatherings
High mixing in community
Close physical contact
Longer duration of contact

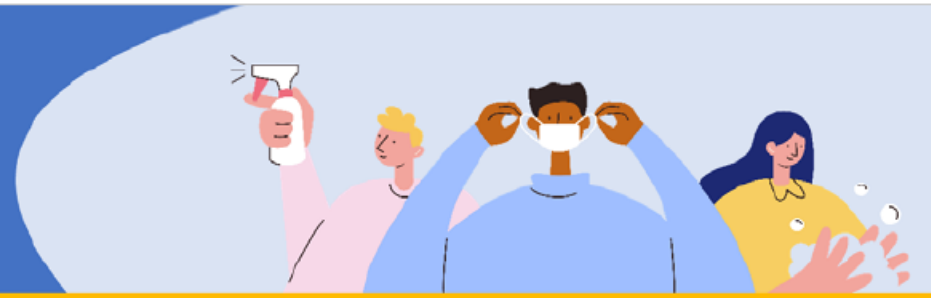
Highest

Large indoor gatherings
Crowded conditions
Prolonged contact
High mixing across communities
Shared objects & surfaces
Underlying health conditions





LOWER RISK BY WEARING FACE COVERINGS, PHYSICAL DISTANCING & AVOIDING CROWDS



COVID-19 STRATEGY



This strategy highlights key components of HCSA's COVID-19 response framework. **Community engagement** and **equity** considerations are infused throughout HCSA's work to reduce near and long-term impacts of the pandemic on disproportionately affected communities.

GOALS	 Prevent & control the spread of COVID-19	 Find, test, & isolate cases and their contacts to prevent further spread	 Support care of COVID-19 patients	 Coordinate an Effective Response
OBJECTIVES	Minimize community transmission Protect high-risk populations	Test widely Investigate cases and trace contacts Isolate infected people and quarantine their contacts	Ensure availability of critical care capacity Provide high-risk populations with needed support through their illness and recovery Distribute available treatment and vaccines	Establish a functional incident management system Use data to drive decisions Engage communities and the organizations that serve them Clearly communicate through multiple means