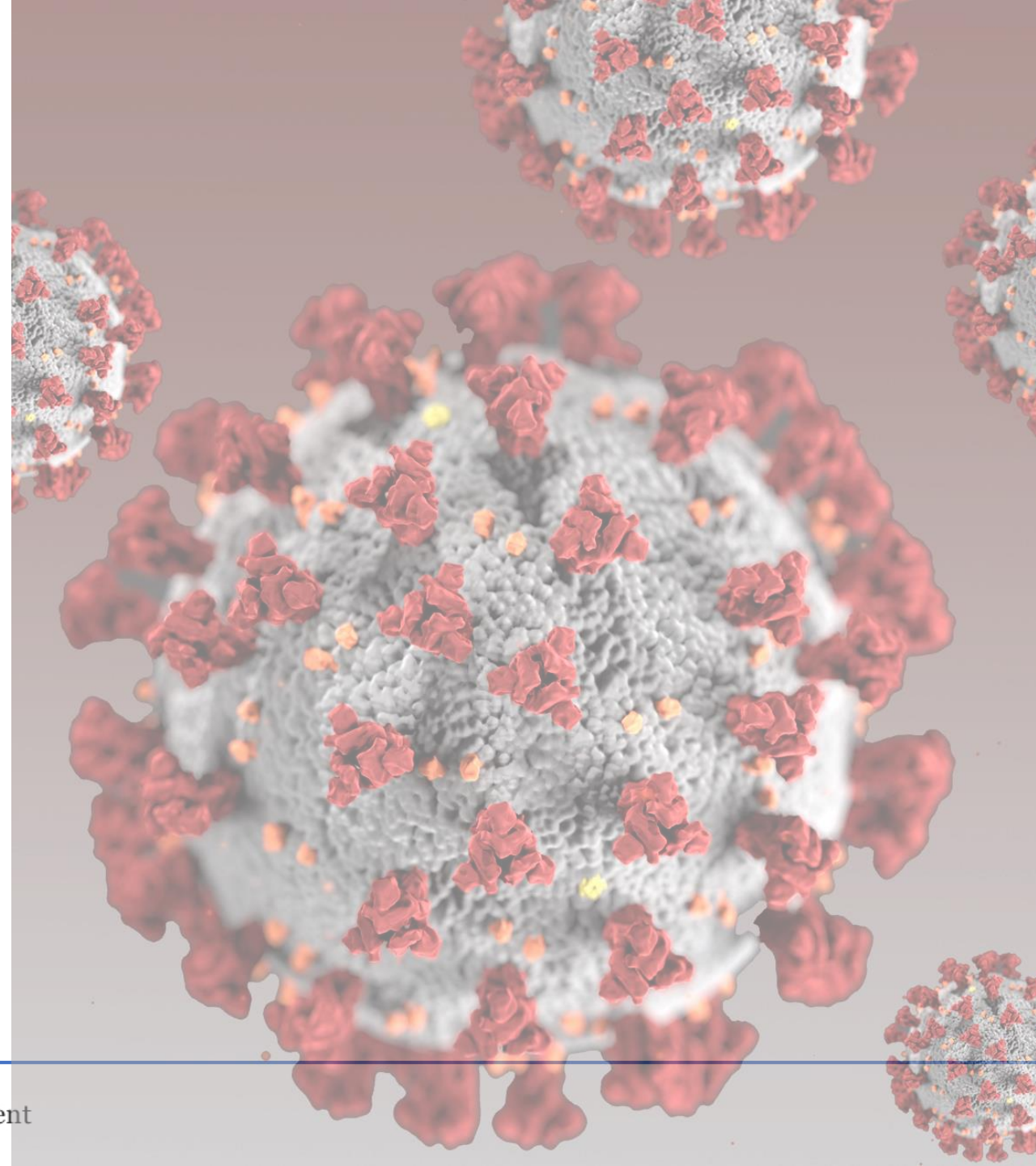


COVID-19 Update

Alameda County
Board of Supervisors
June 30, 2020

Colleen Chawla, Director
Dr. Nicholas Moss, Interim Health Officer
Health Care Services Agency
June 30, 2020



Alameda County
Health Care Services Agency



Alameda County Public Health Department
Celebrating Healthy People in Healthy Communities

Key Updates

- **Health Officer Transition**

- Thank you, Dr. Pan
- Thank you, Dr. Moss

- **Pause on Reopening**

- Current situation
 - Increases in hospitalizations and case rates in Alameda County
 - Similar increases in neighboring counties and across the state
 - Disproportionate impact on communities of color
 - Impact of San Quentin outbreak
- Extending the timeline for the next phase of reopening
- Will continue to monitor key indicators
- Not scaling anything back at this time, but not opening anything new





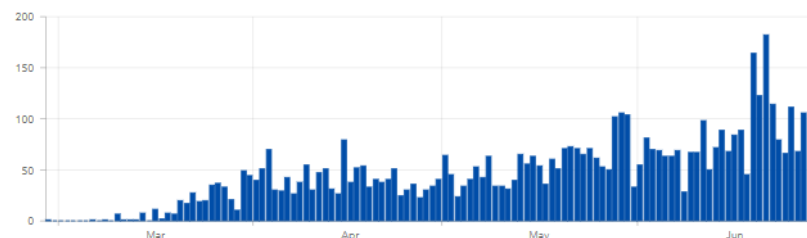
Alameda County COVID-19 Dashboard Updated 6/29/2020 with data through the end of 6/28/2020

Alameda County LHJ

5,615
Cases

132
Deaths

Alameda County LHJ Daily Cases



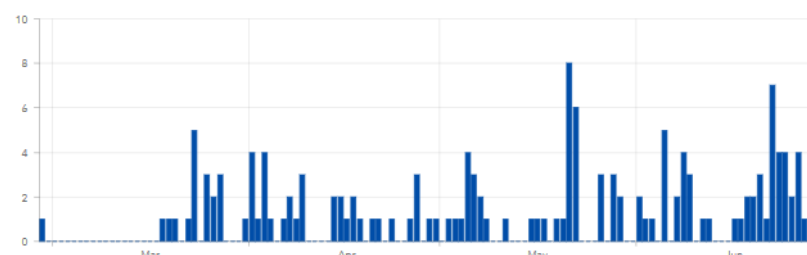
Cumulative **Daily**

Berkeley LHJ

147
Cases

1
Deaths

Berkeley LHJ Daily Cases



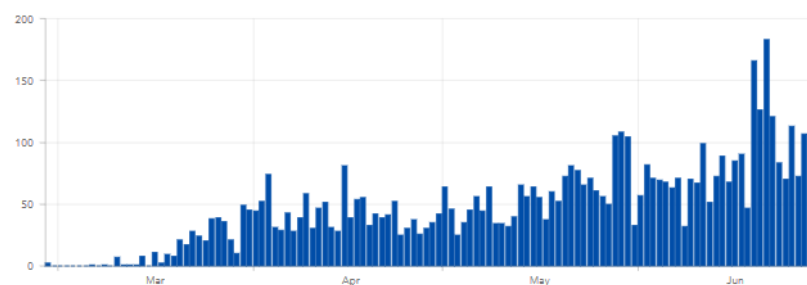
Cumulative **Daily**

Alameda County Total

5,762
Cases

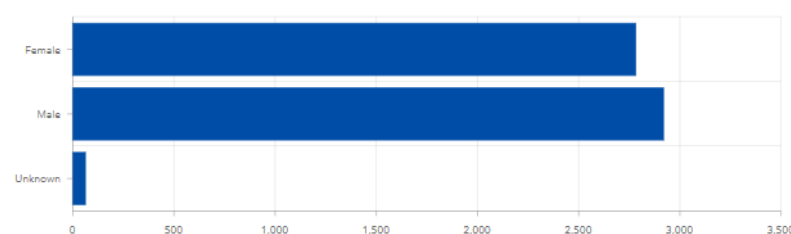
133
Deaths

Alameda County Total Daily Cases



Cumulative **Daily**

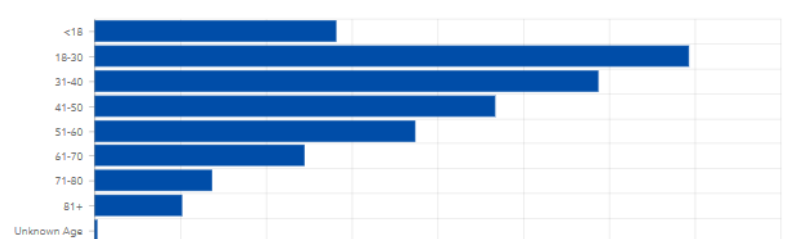
Alameda County Total Cases by Gender



Reported transgender, other, and unknown gender identities are each less than ten and so are suppressed

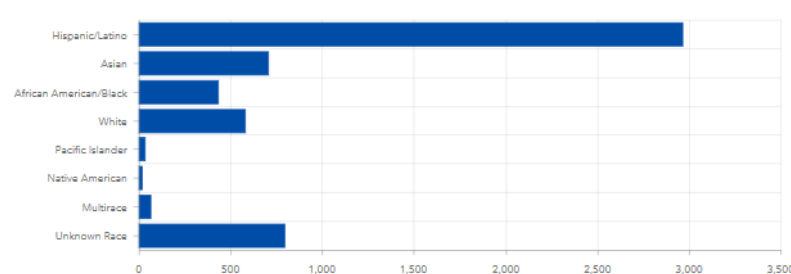
Cases **Case Rates**

Alameda County Total Cases by Age Group



Cases **Case Rates**

Alameda County Total Cases by Race/Ethnicity



Cases **Case Rates**

[Click here to go to our mobile dashboard.](#)

[Click here to go to our second dashboard with data on deaths by race/ethnicity, hospitalizations, and cases and case rates by zip code.](#)

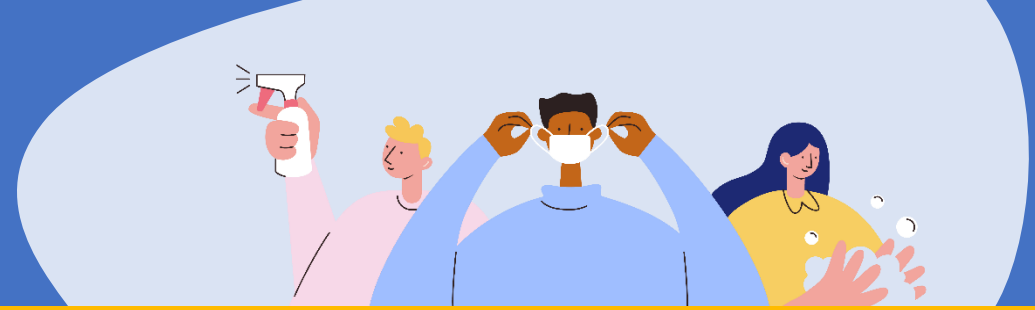
Alameda County Cases by City/Jurisdiction

Alameda County:	5762
Berkeley LHJ:	147
Alameda County LHJ:	5615
Under Investigation:	301
Homeless:	90
Address Unknown:	11
Santa Rita Jail*:	60
Alameda:	80
Albany:	11
Dublin:	49
Emeryville:	20
Fremont:	276
Hayward:	963
Livermore:	150
Newark:	159
Oakland:	2252
Piedmont:	13
Pleasanton:	99
San Leandro:	276
Union City:	189
Eden Area MAC (Ashland, Cherryland, Hayward Acres, San Lorenzo):	364
Castro Valley MAC:	181
Fairview MAC:	62
Sunol:	<10
Remainder of County:	<10





* SRJ notes total 63: 1 released and outside Alameda LHJ; 1 not yet in CalREDIE; 1 tested positive twice

Cases **Case Rates**

COVID-19 STRATEGY



This strategy highlights key components of HCSA’s COVID-19 response framework. **Community engagement** and **equity** considerations are infused throughout HCSA’s work to reduce near and long-term impacts of the pandemic on disproportionately affected communities.

GOALS	 Prevent & control the spread of COVID-19	 Find, test, & isolate cases and their contacts to prevent further spread	 Support care of COVID-19 patients	 Coordinate an Effective Response
OBJECTIVES	Minimize community transmission Protect high-risk populations	Test widely Investigate cases and trace contacts Isolate infected people and quarantine their contacts	Ensure availability of critical care capacity Provide high-risk populations with needed support through their illness and recovery Distribute available treatment and vaccines	Establish a functional incident management system Use data to drive decisions Engage communities and the organizations that serve them Clearly communicate through multiple means

Alameda County COVID-19 Indicators

6.29.2020

Indicator Movement

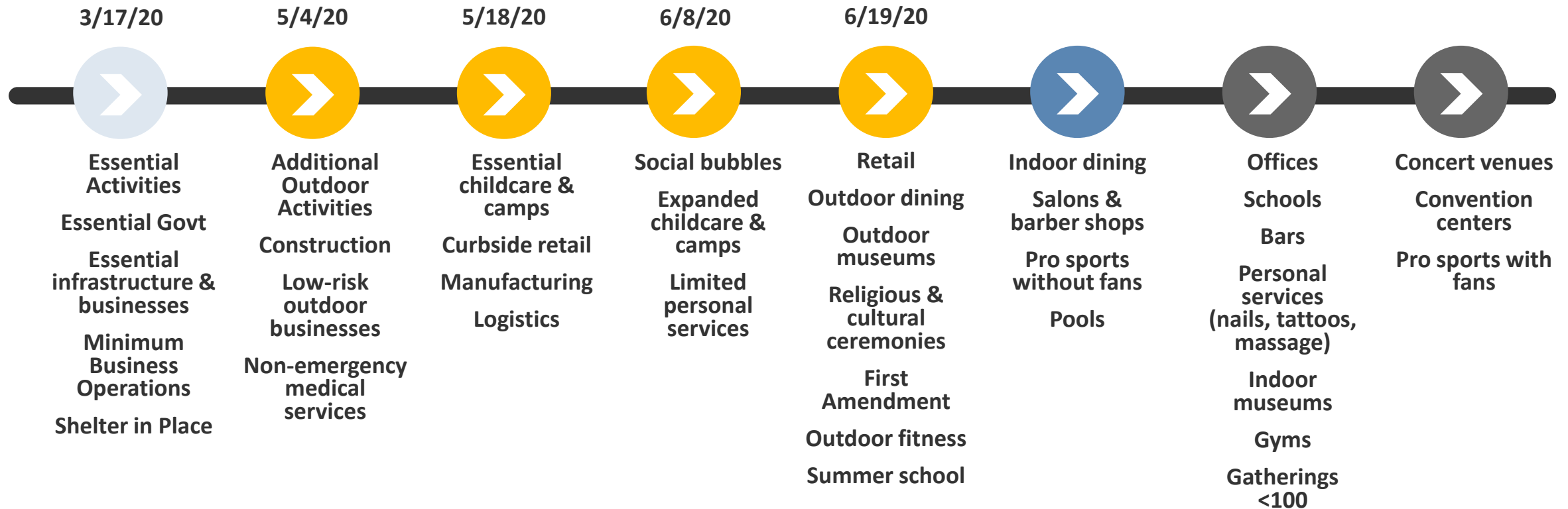


	Cases & Hospitalizations Flat or Decreasing	Sufficient Hospital & Surge Capacity	Sufficient Testing Capacity	Sufficient Disease Containment	Sufficient PPE
Indicator Status	■ ■ ■	■ ■ ■ ■ ■	■ ■ ■ ■	■ ■ ■	■ ■ ■
Trends & Data	<ul style="list-style-type: none"> • 5,670 cases • Cases rising in last 7 days • 99 cases hospitalized • Hospitalizations rising from 63.2 to 71.1/100k population in last 7 days • 7-day daily hosp change 4% (goal <5%) 	<ul style="list-style-type: none"> • 1,100 (47%) inpatient hospital beds available • 868 (100%) surge beds available 	<ul style="list-style-type: none"> • Positivity rate: <4% (goal <8%) • Over 2,800 tests/day (goal 3,100) • 1.2 tests/1,000 over 7 days (goal 1.5/1000) • 75% of residents w/in 30min drive to site 	<ul style="list-style-type: none"> • 90 case investigation & contact tracing staff (goal 300) • 830 isolation /quarantine rooms operating (goal 1,203) • Special settings teams: LTCF, Outbreaks, Encampments 	<ul style="list-style-type: none"> • 41 requests for PPE in last 14 days (goal 0) • 158 requests for PPE in last 30 days (goal 0)



Alameda County Reopening Plan: Updated 6.18.20

Movement to next stage contingent upon local COVID-19 indicators, at 2-4 week intervals



Face Coverings, Physical Distancing, and Site Specific Protection Plans Required – Stay in your Community

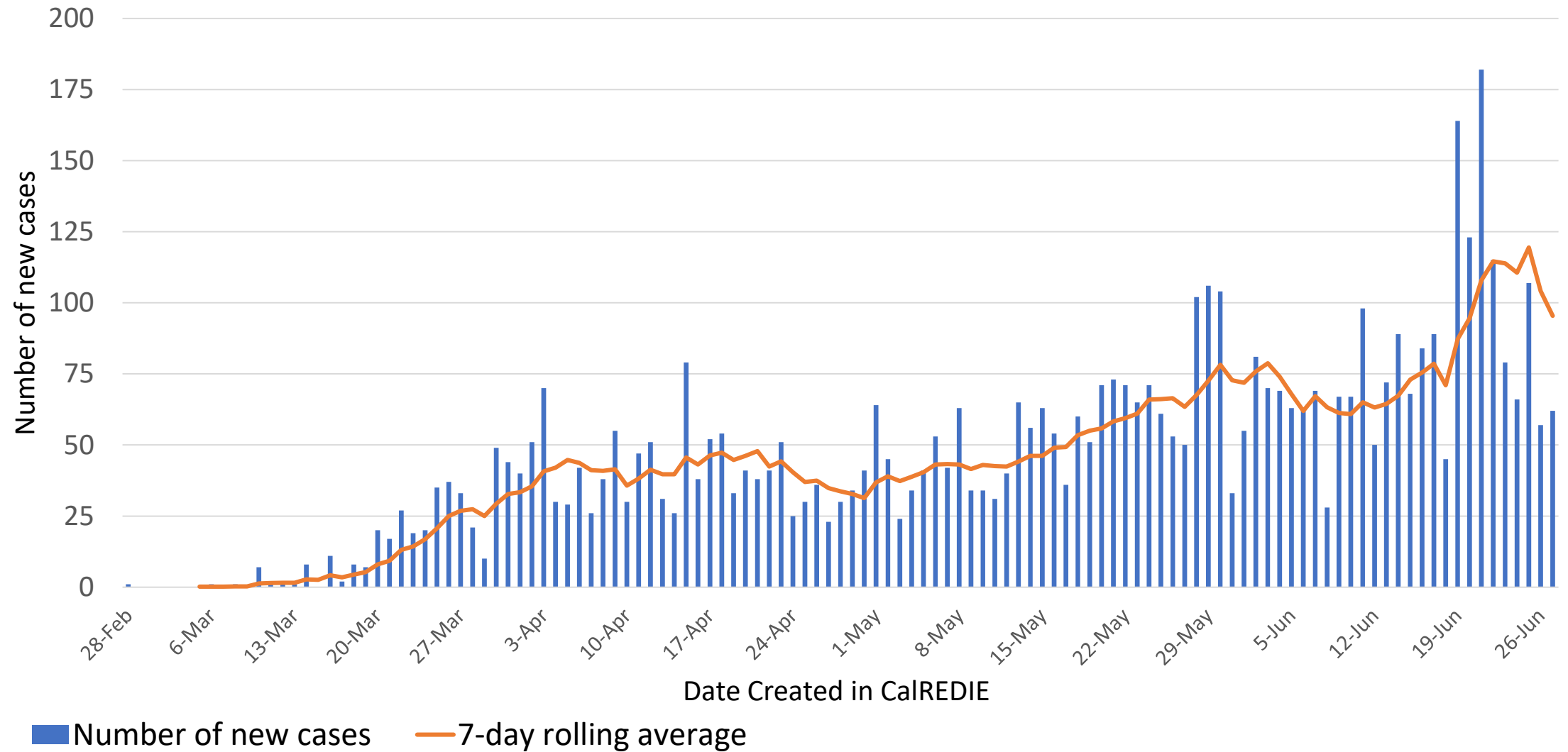


Alameda County
Health Care Services Agency

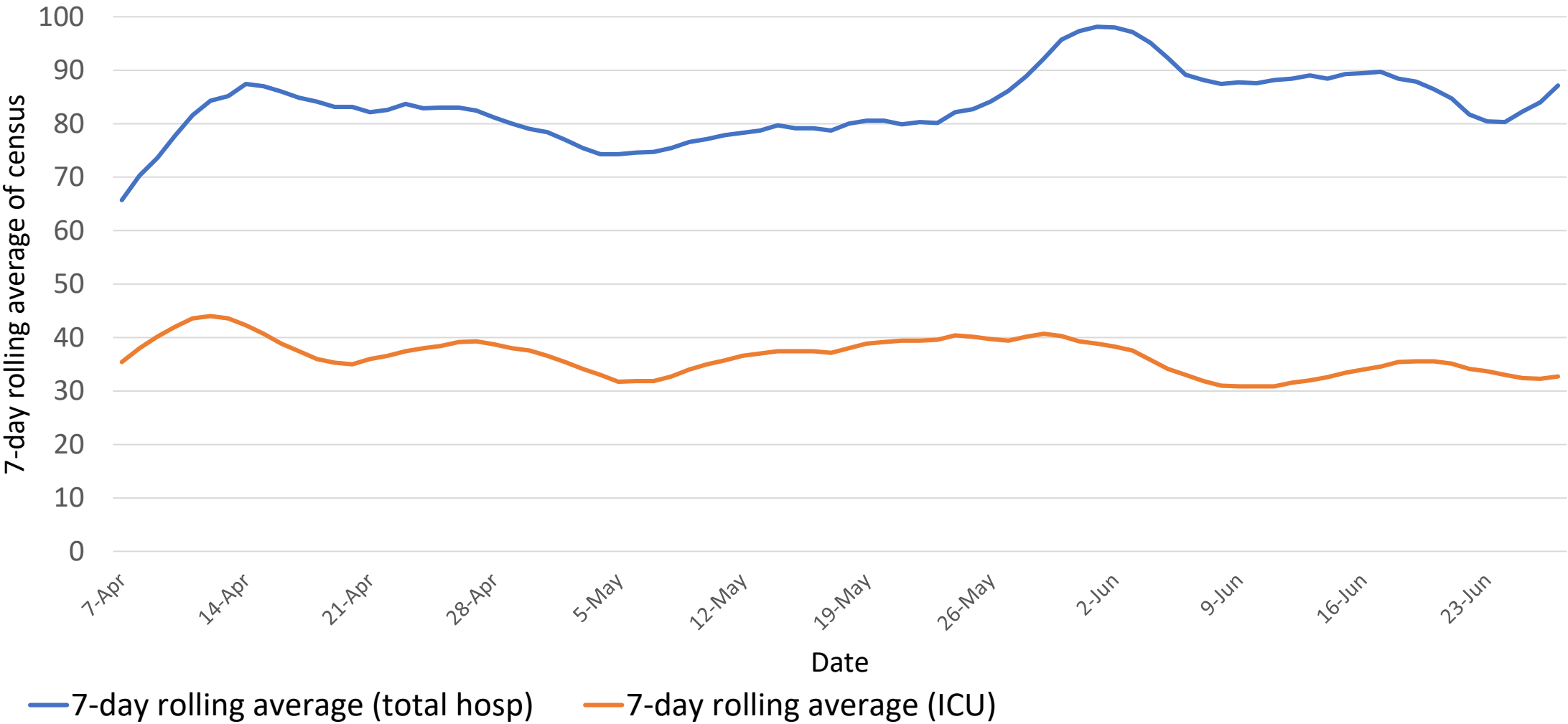


Alameda County Public Health Department
Celebrating Healthy People in Healthy Communities

New Alameda County COVID-19 Cases, 2020



COVID-19 Patients Hospitalized in Alameda County, 7-day rolling average, 2020



COVID-19 Testing

- COVID-19 Testing Request for Proposals released 6/10/20.
- Mechanism to quickly scale up testing in Alameda County.
- Bidders may apply in four categories:
 1. Stationary and Mobile Testing Sites (community-based testing)
 2. Community Health Centers and Primary Care Medical Clinics
 3. Testing at Long Term Care Facilities
 4. COVID-19 Lab Processing



COVID-19 Case Investigation & Contact Tracing

Two Phase Approach to Community-Based Expansion

- **Phase One** – Emergency Contracts with Community Clinics that serve populations most impacted by COVID-19
 - Identify clinics and explore expansion deliverables
 - Bring four emergency contracts for Board of Supervisors approval on July 14
 - Contract term July 15 – September 1
- **Phase Two** – Emergency Request for Proposal
 - Seek additional clinical and non-clinical contract partners
 - RFP opens between July 15 and August 1
 - Earliest term of awarded contracts is August 15



Project Roomkey Update: Operation Safer Ground

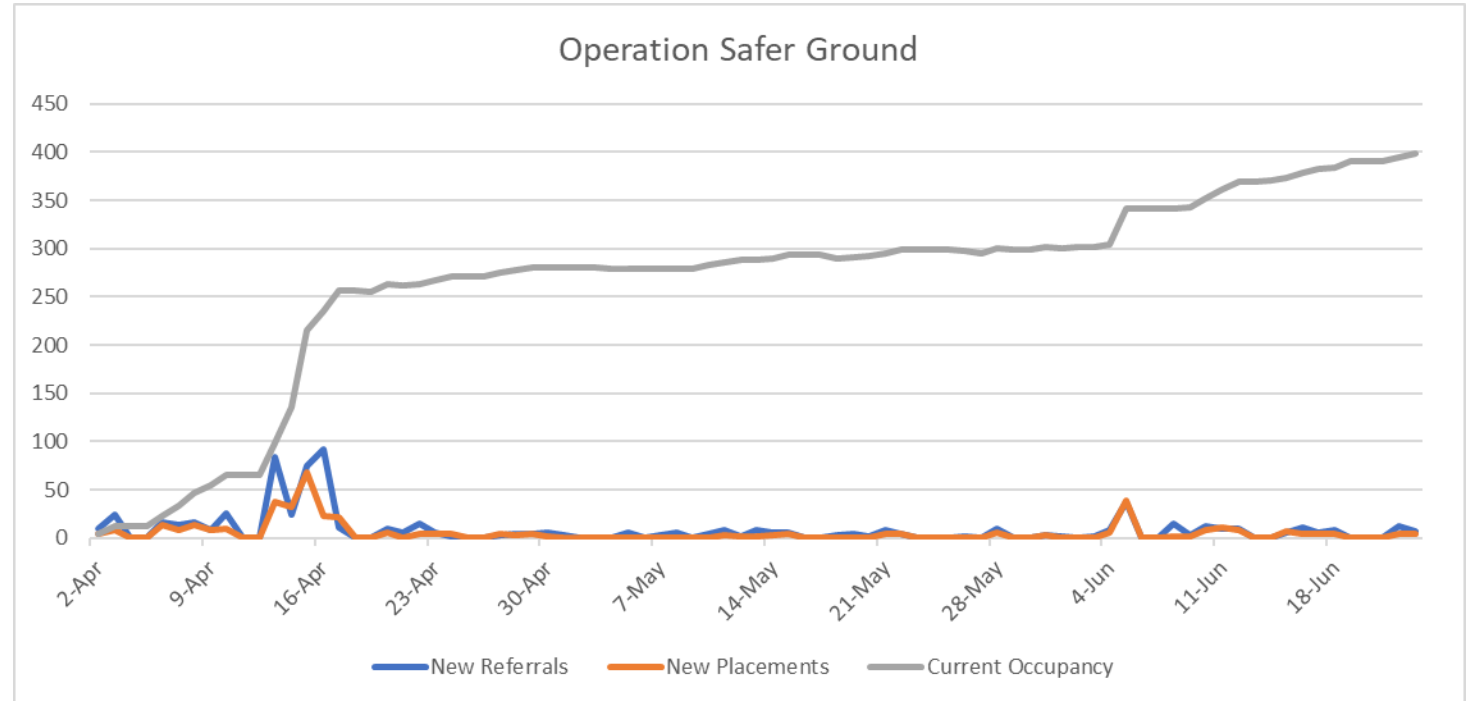
Target Population: Homeless/high risk

Current hotels: 3

Current number of households: 398

Level of occupancy: 90%

- Alameda site opened May 11
- Newark site opened June 5
- Currently seeking additional hotel contracts
- City trailer counts and occupancy will be added to overall Safer Ground housing goal



*Data as of 6/23/20

Project Roomkey Update: Operation Comfort

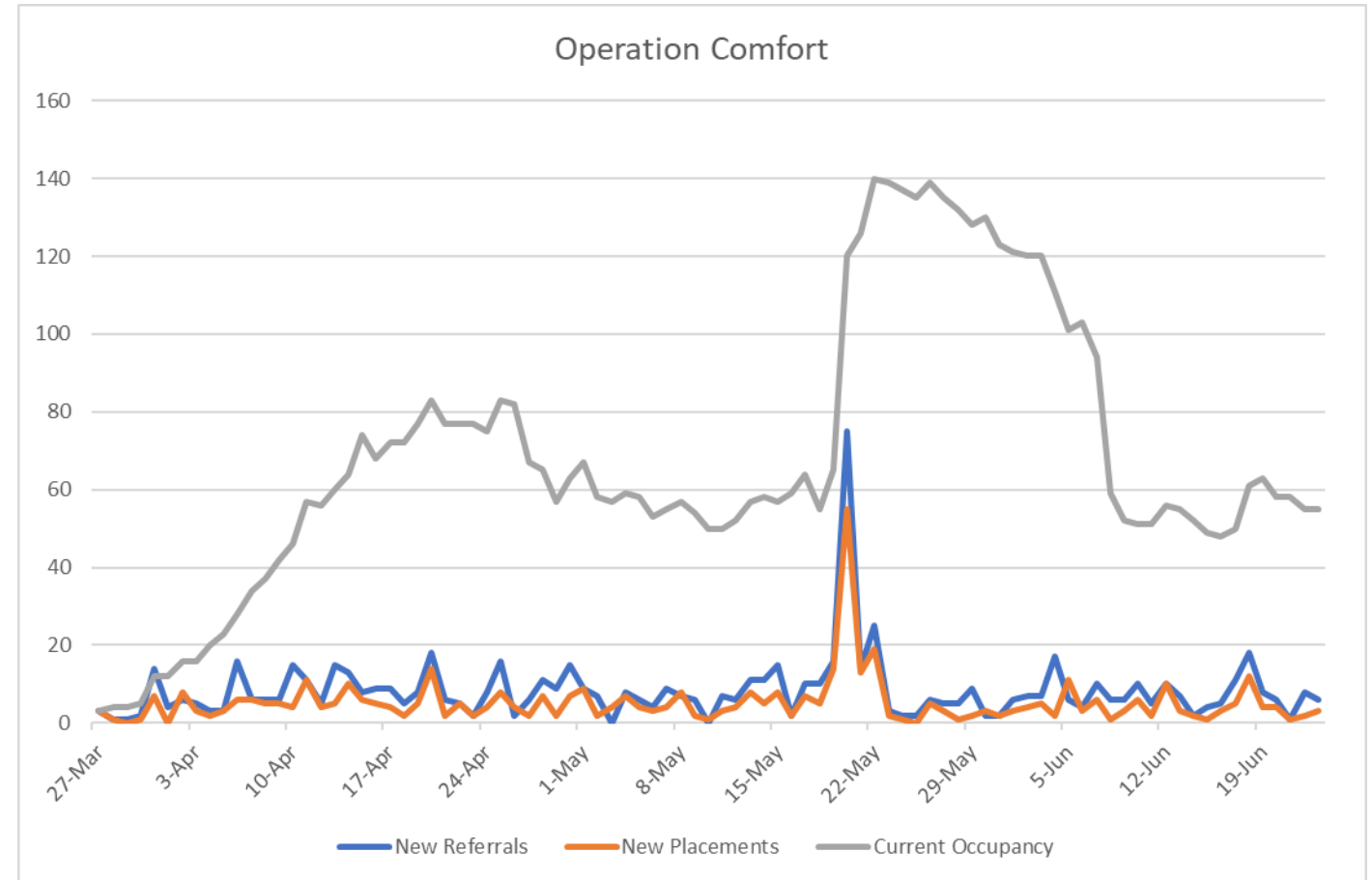
Target Population: COVID+/PUI homeless, or COVID+ other congregate

Current hotels: 2

Current number of households: 55

Level of occupancy: 28%

- Sharp rise in occupancy due to May 20th shelter decompression with 2 week minimum stay
- Level of occupancy is to allow for emergencies and additional shelter decompressions



*Data as of 6/23/20

Questions

• • • • Hey Alameda County! • • • •

YOU SAVED

6,441 lives
by staying home for 45 days.

On March 16, Alameda County's stay-at-home order went into effect.

While we are all aware of the rising death toll and the economic costs of COVID-19, it is important to recognize the positive difference we are all making to reduce the severity of this pandemic.

45
days home

60,216
people not in hospital

6,441
lives saved

60
days home

70,364
people not in hospital

7,291
lives saved

We are making an important difference everyday by staying home. Let's **keep staying home** and continue to **save lives**, Alameda County!

Using epidemiologists' models available through The New York Times, we can estimate the number of hospitalizations and deaths we can prevent by continuing to socially distance. The models are based on a variety of assumptions related to weather patterns, infectiousness of disease, and the aggressiveness of regulatory measures. As such, these numbers are only estimating the collective impact you and your neighbors are making to help save lives and are not actual hospitalizations or lives saved.

See the The New York Times model: bit.ly/NYTimesModel



Based on the infographic created by Community Information Now: bit.ly/CommInfoNow



Alameda County
Health Care Services Agency



Alameda County Public Health Department
Celebrating Healthy People in Healthy Communities