



COVID-19 Update

**BOS Health Committee
June 8, 2020**

**Colleen Chawla, Director
Health Care Services Agency**

Alameda County COVID-19 Indicators

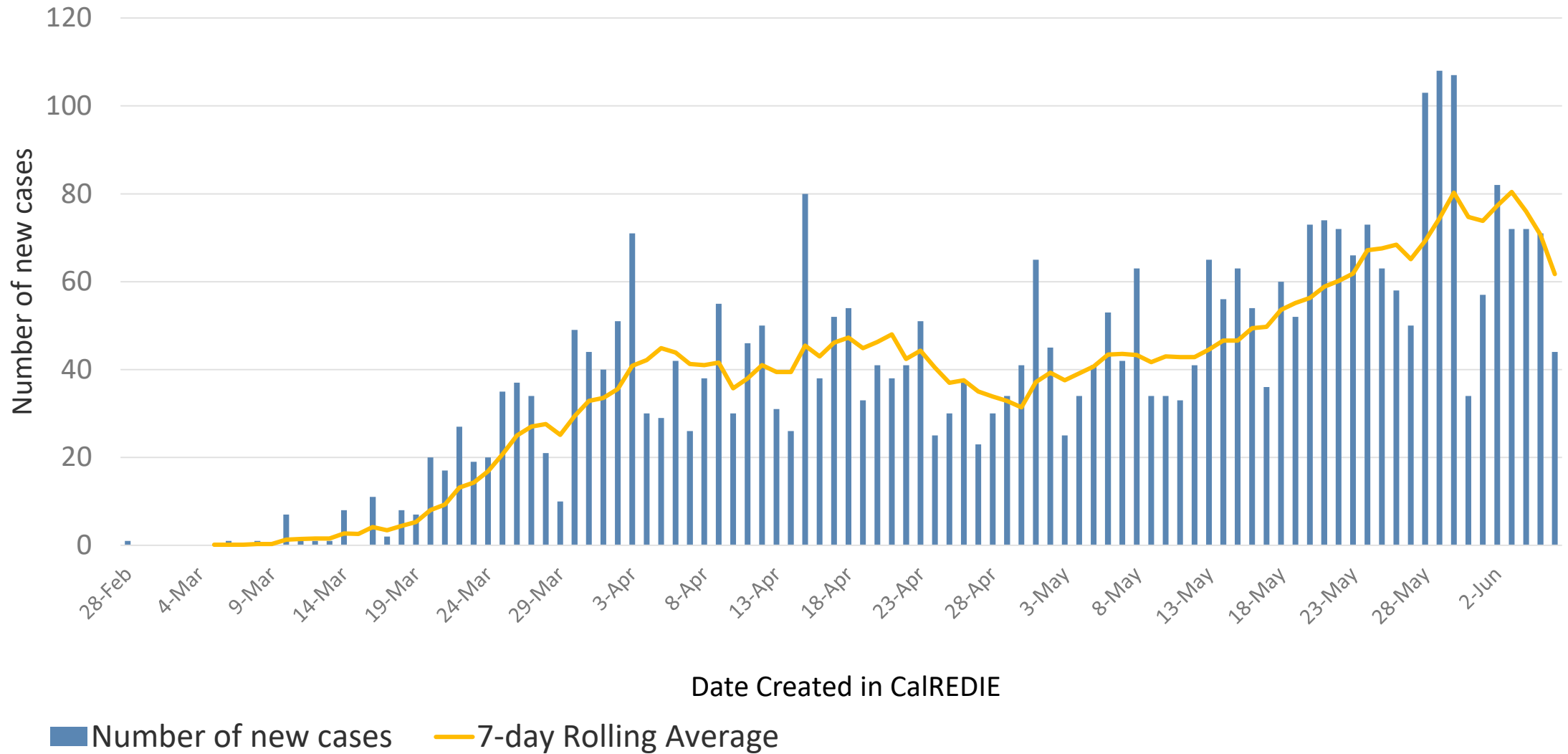
6.5.2020

	Cases & Hospitalizations Flat or Decreasing	Sufficient Hospital & Surge Capacity	Sufficient Testing Capacity	Sufficient Disease Containment	Sufficient PPE
Indicator Status	■ ■ ■	■ ■ ■ ■ ■	■ ■ ■	■ ■ ■	■ ■ ■
Related Activities	<ul style="list-style-type: none"> • Shelter in Place • Physical Distancing • Face Coverings • Clinical guidance • Public guidance 	<ul style="list-style-type: none"> • Health care systems planning • LTCF Partnership • COVID-19 patients 4% of hospital beds and 9% of ICU beds 	<ul style="list-style-type: none"> • Goal 3100 tests/day • As of 6/3 ~1500/day 	<ul style="list-style-type: none"> • Contact tracing expansion • Isolation & Quarantine support • Encampment response • Surveillance • LTCF Task Force • Equity lens 	<ul style="list-style-type: none"> • Procurement and fulfillment through EOC • Continued PPE requests from healthcare partners

Indicator Movement

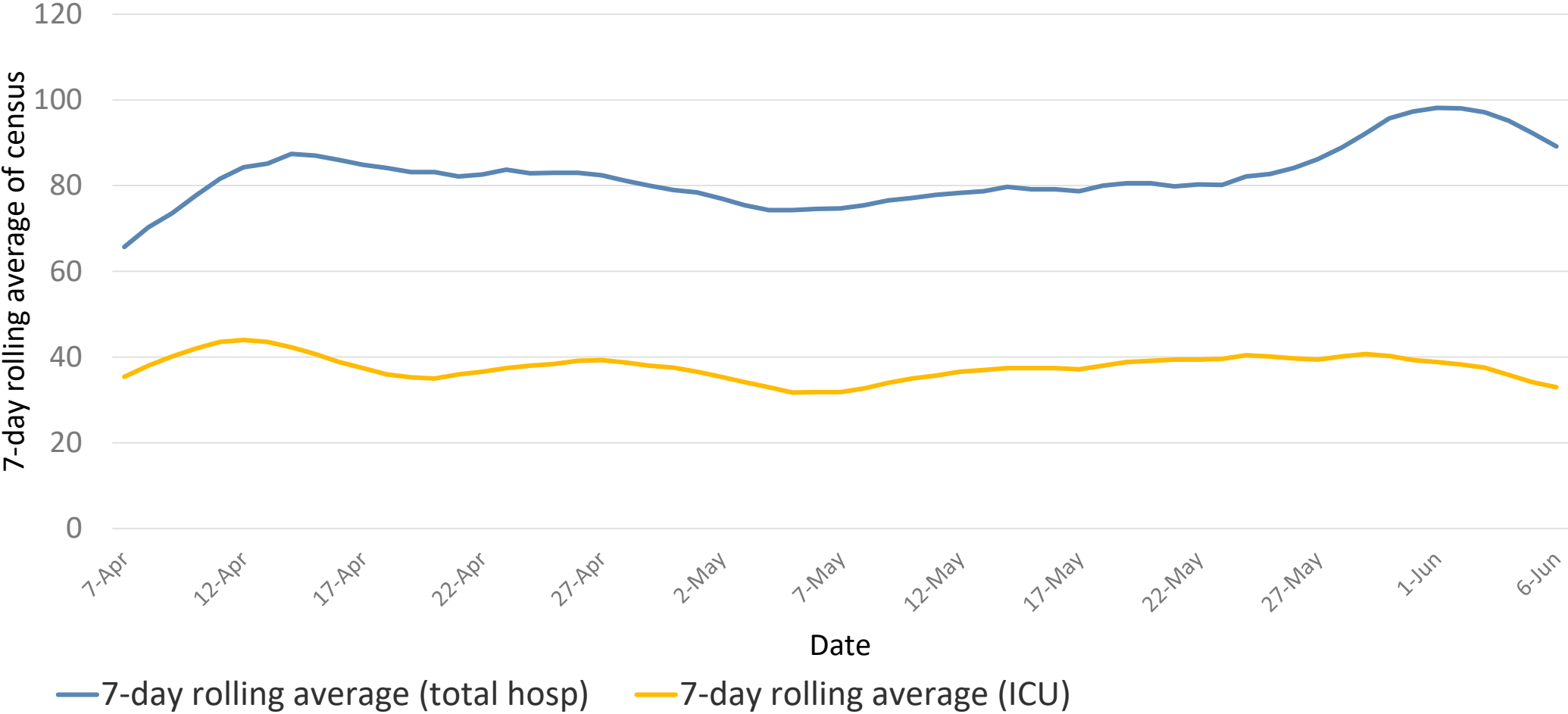


New Alameda County COVID-19 Cases, 2020



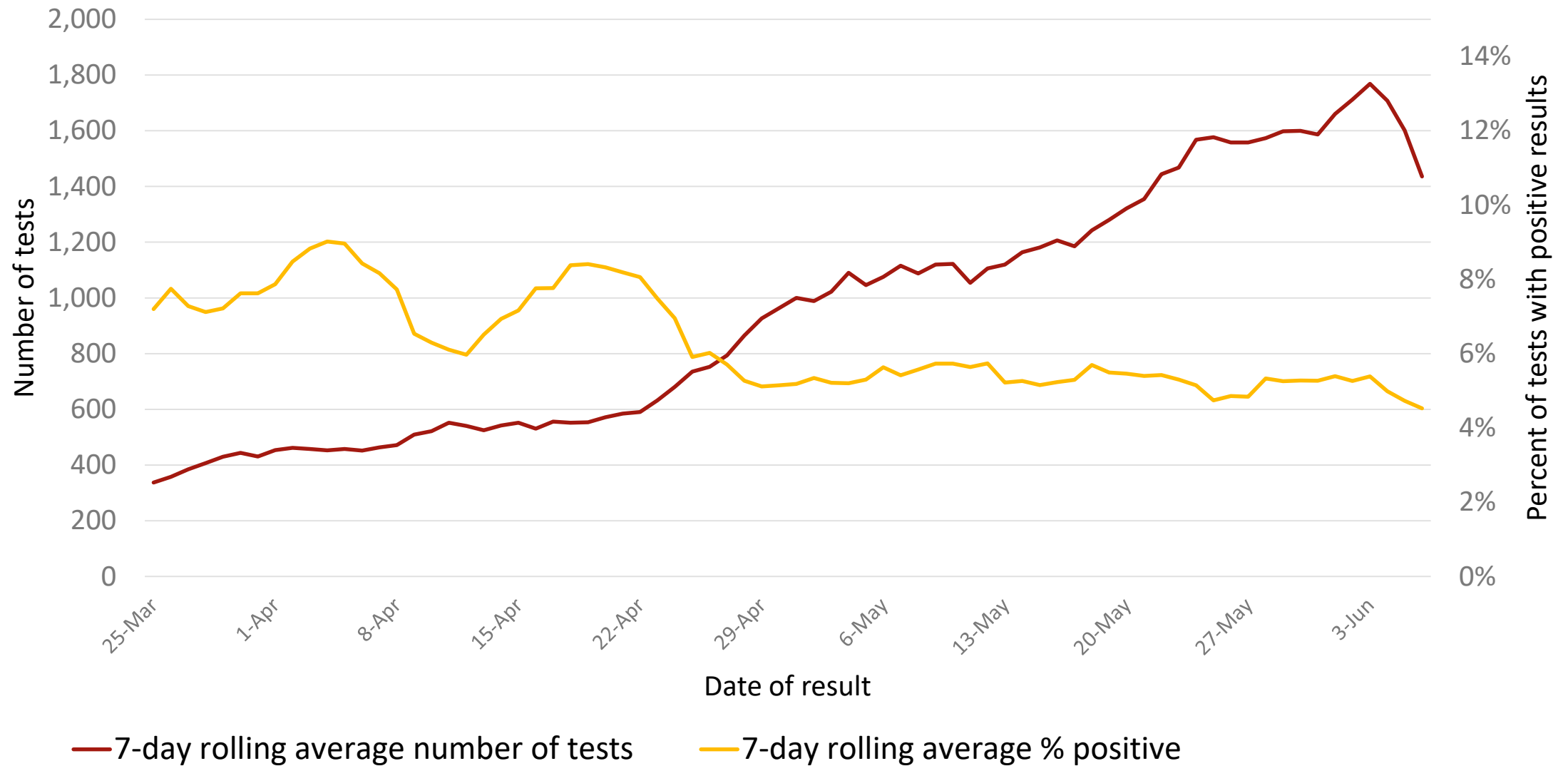
Source: CalREDIE entries through June 6, 2020.

COVID-19 Patients Hospitalized in Alameda County, 7-day rolling average, 2020



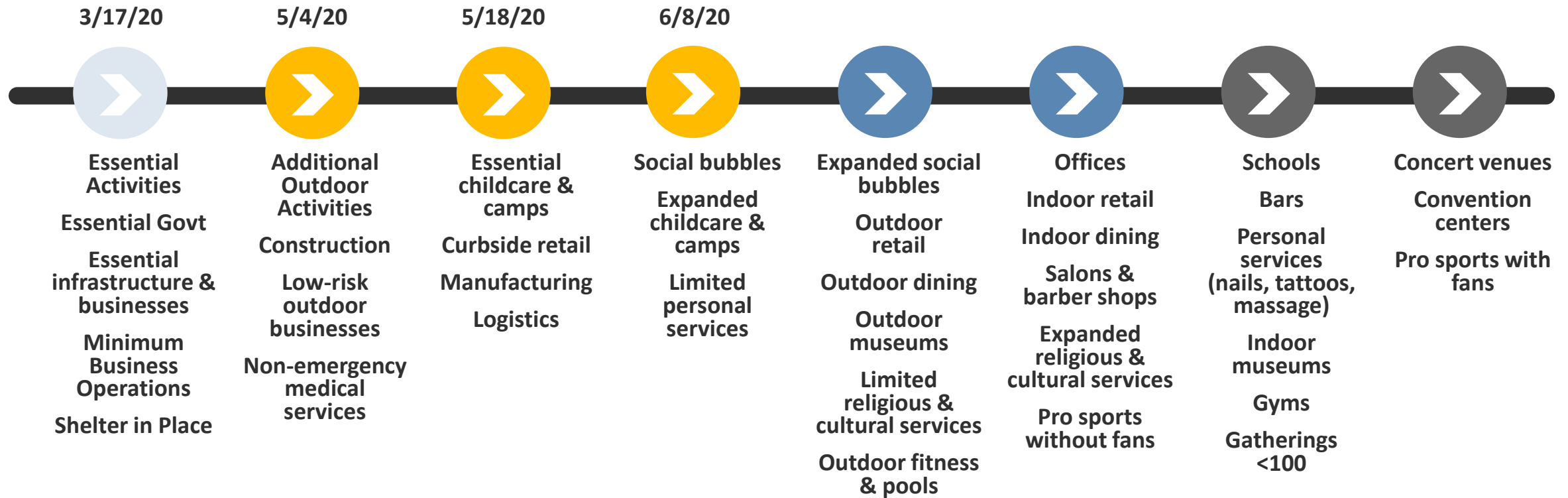
Source: https://data.chhs.ca.gov/dataset/california-covid-19-hospital-data-and-case-statistics/resource/6cd8d424-dfaa-4bdd-9410-a3d656e1176e?inner_span=True

Alameda County COVID-19 Testing



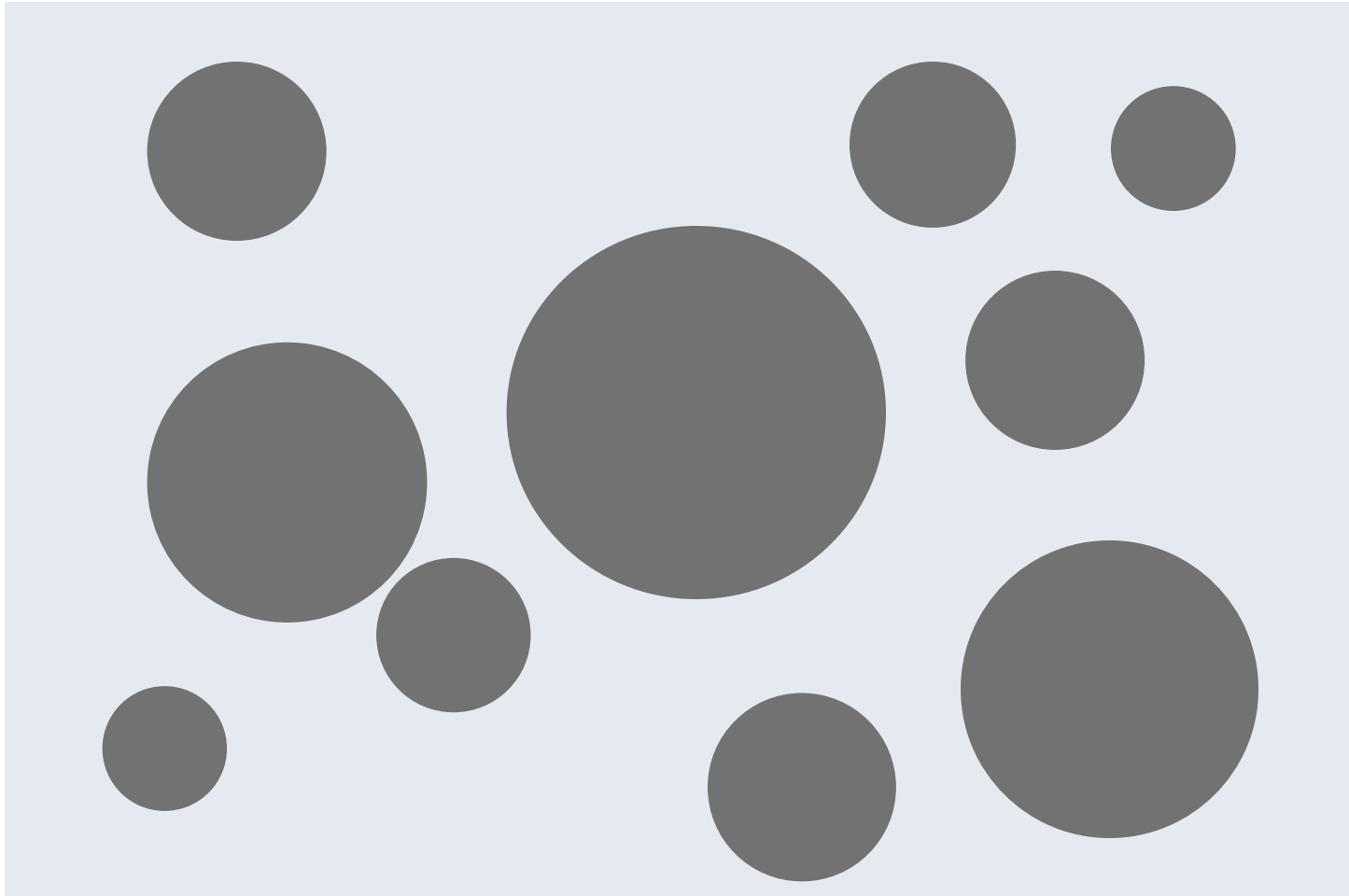
Alameda County Reopening Plan (6.5.20)

Movement to next stage contingent upon local COVID-19 indicators, at 2-4 week intervals



Face Coverings, Physical Distancing, and Site Specific Protection Plans Required – Stay in your Community

COVID-19 Social Bubble



Social Bubble Tips:

1. Stick to a stable group of 12 or fewer
2. Join only one bubble
3. Stick together for at least 3 weeks
4. Plan for outdoors only
5. Don't forget face coverings
6. Talk about why/how you want to bubble up: routines, communication
7. Agree to all follow the same rules
8. Agree to have no hard feelings if it doesn't work out
9. Remember that your actions affect everyone in the group

Operation Comfort Update

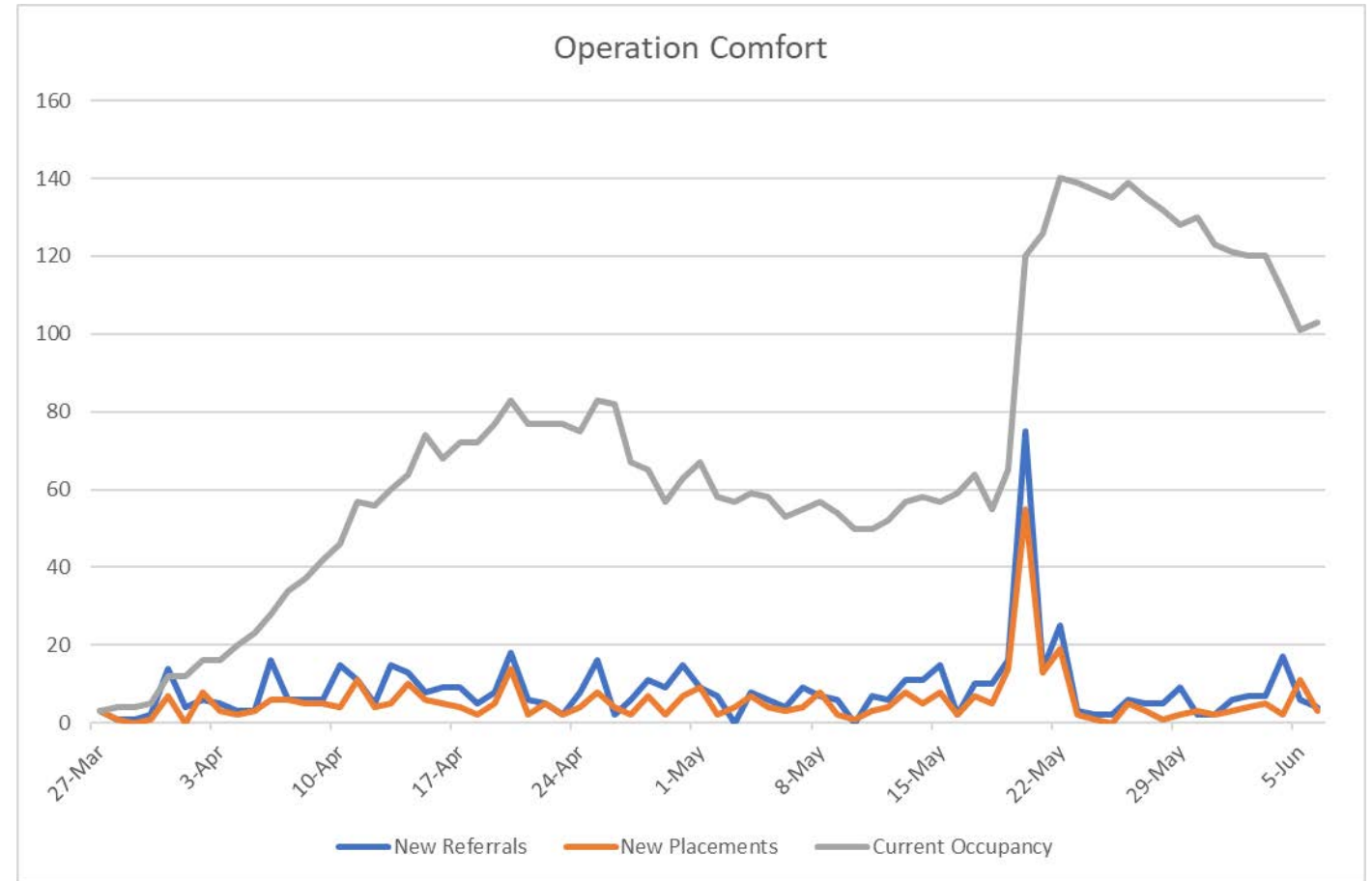
Target Population: COVID+ homeless or from other congregate

Current hotels: 2

Current number of households: 103

Level of occupancy: 52%

- Sharp rise in occupancy due to May 20th shelter decompression
- Starting June 1st, 2 week minimum stay
- Level of occupancy is to allow for emergencies and additional shelter decompressions
- Currently seeking additional hotel contracts



*Data as of 6/6/20

Operation Safer Ground Update

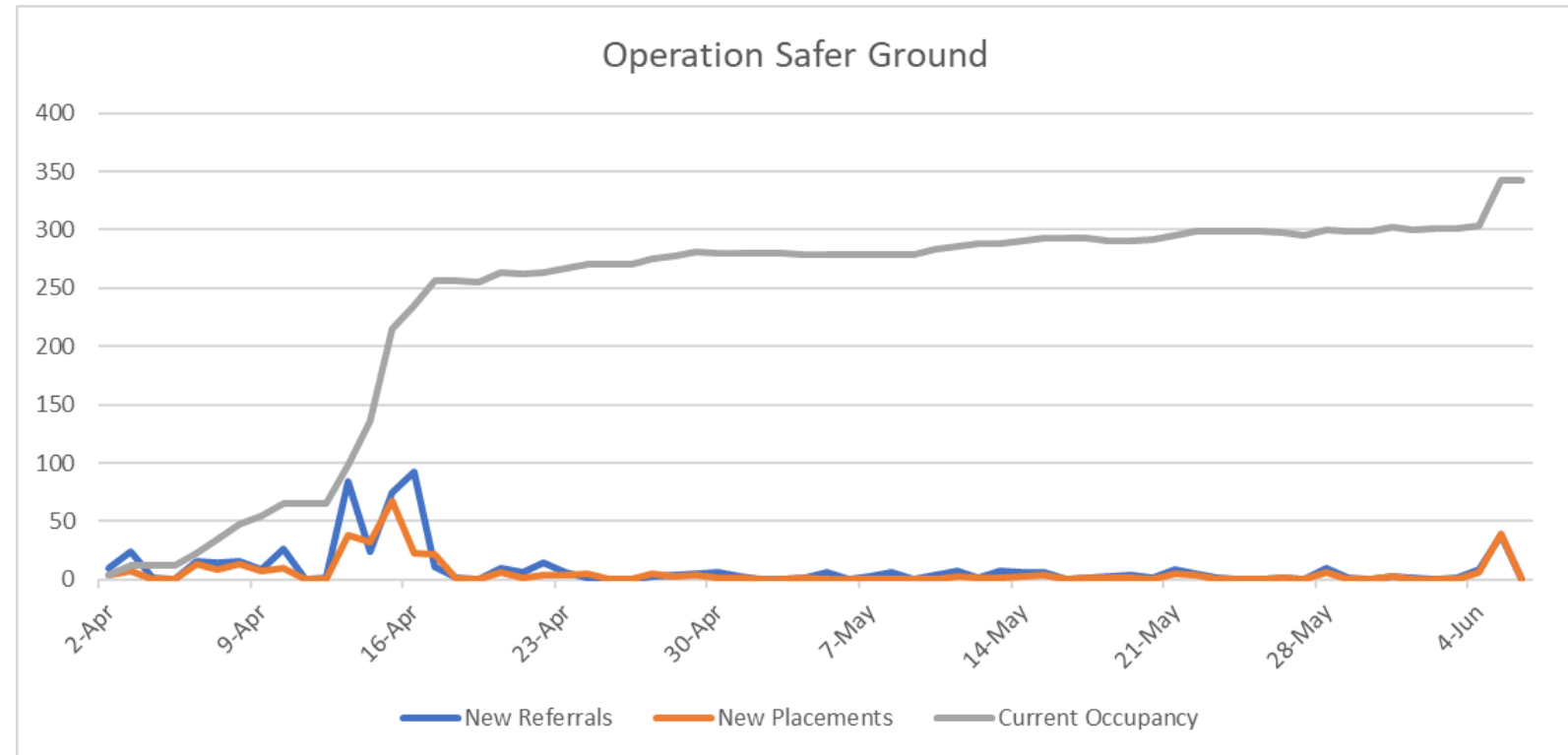
Target Population: Homeless/high risk

Current hotels: 3

Current number of households: 342

Level of occupancy: 77%

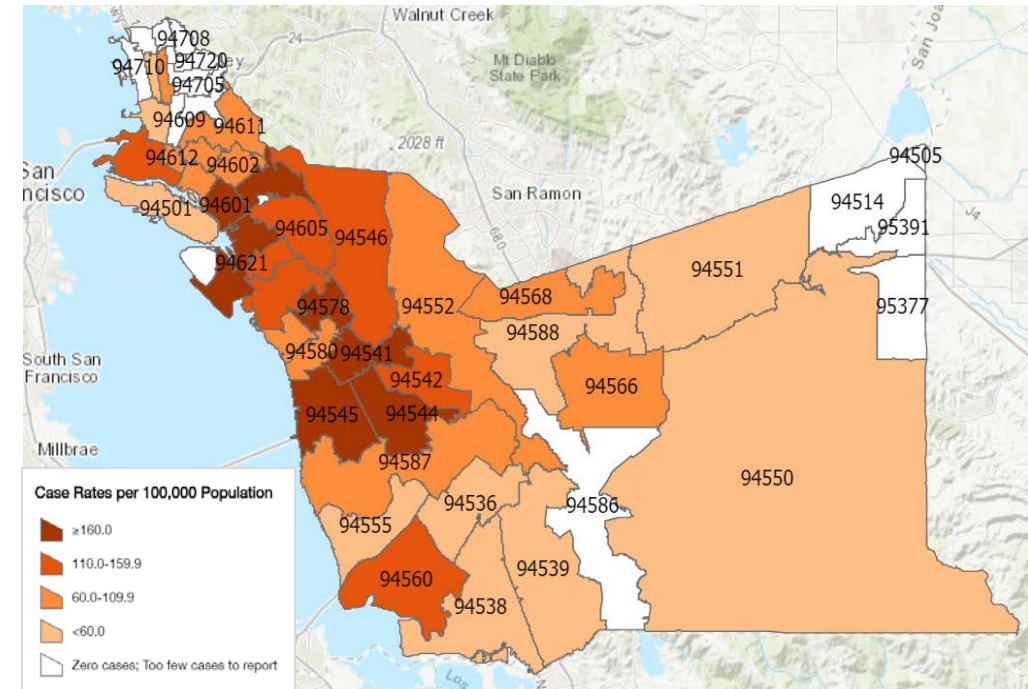
- Alameda site opened on May 11
- Newark site opened 6/5/20
- Ramp up occupancy for Safer Ground Newark; seek additional hotel contracts



*Data as of 6/6/20

HCSA Health Equity Task Force Update

- Increased testing in East (incl Fruitvale) and West Oakland
- Piloting Team-based case and contact investigation model
- Organizing advisory committee of community organizations



Hey Alameda County!
YOU SAVED
6,441 lives
 by staying home for 45 days.

On March 16, Alameda County's stay-at-home order went into effect.

While we are all aware of the rising death toll and the economic costs of COVID-19, it is important to recognize the positive difference we are all making to reduce the severity of this pandemic.



We are making an important difference everyday by staying home. Let's **keep staying home** and continue to **save lives**, Alameda County!

Using epidemiologists' models available through The New York Times, we can estimate the number of hospitalizations and deaths we can prevent by continuing to socially distance. The models are based on a variety of assumptions related to weather patterns, infectiousness of disease, and the aggressiveness of regulatory measures. As such, these numbers are only estimating the collective impact you and your neighbors are making to help save lives and are not actual hospitalizations or lives saved.

See the The New York Times model: bit.ly/NYTimesModel



Based on the infographic created by Community Information Now: bit.ly/CommInfoNow

QUESTIONS?

ACPHD COVID-19 webpage: acphd.org/2019-ncov

Email questions to: nCov@acgov.org

Business reopening questions: COVIDrecovery@acgov.org