



# CORONAVIRUS UPDATES

Get the latest news from our Public Health Department

## COVID-19 (Novel Coronavirus) Update

**Board of Supervisors  
May 19, 2020**

**Colleen Chawla, Director  
Health Care Services Agency**



Alameda County  
Health Care Services Agency



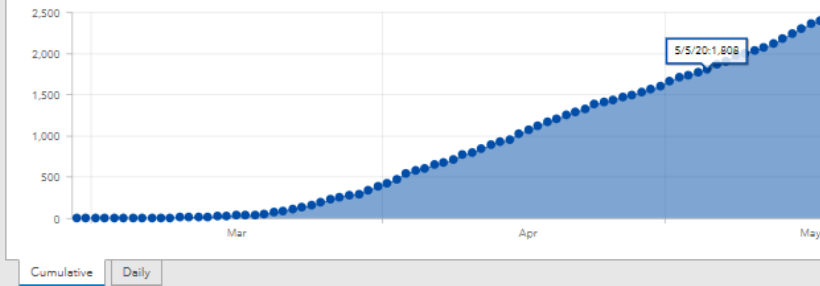
Alameda County Public Health Department  
Celebrating Healthy People in Healthy Communities

### Alameda County LHJ

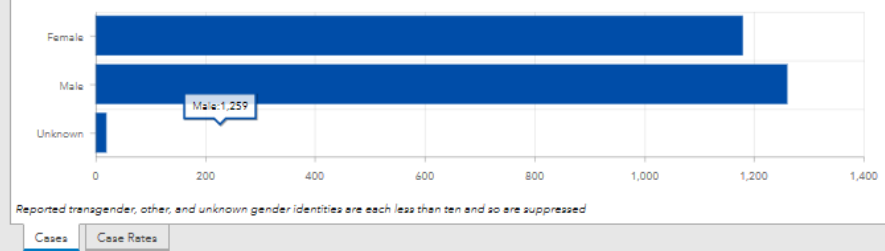
2,387  
Cases

82  
Deaths

Alameda County LHJ Cumulative Cases



Alameda County Cases by Gender



[Click here to go to our mobile dashboard.](#)

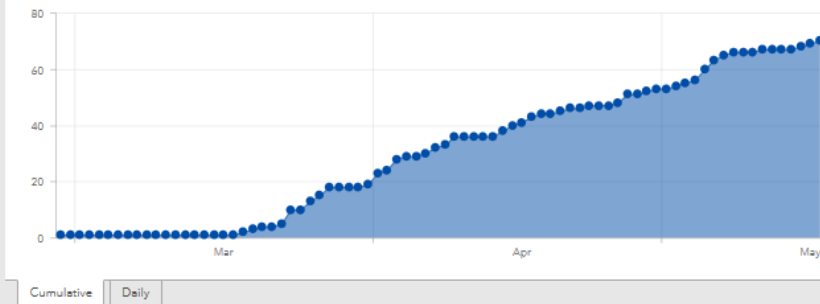
[Click here to go to our second dashboard with data on deaths by race/ethnicity, hospitalizations, and cases and case rates by zip code.](#)

### Berkeley LHJ

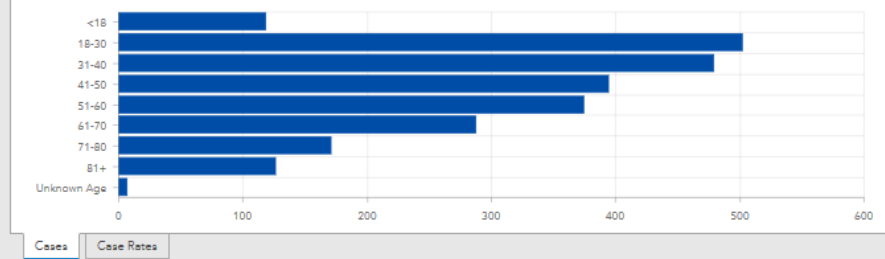
70  
Cases

1  
Deaths

Berkeley LHJ Cumulative Cases



Alameda County Cases by Age Group



Alameda County Cases by City/Jurisdiction

Alameda County:	2456
Berkeley LHJ:	70
Alameda County LHJ:	2386
Under Investigation:	47
Known Homeless:	26
No Address (May Be Homeless):	7
Santa Rita Jail*:	52
Alameda:	42
Albany:	<10
Dublin:	26
Emeryville:	<10
Fremont:	136
Hayward:	495
Livermore:	45
Newark:	72
Oakland:	819
Piedmont:	10
Pleasanton:	57
San Leandro:	122
Union City:	100
Eden Area MAC (Ashland, Cherryland, Hayward Acres, San Lorenzo):	183
Castro Valley MAC:	108
Fairview MAC:	13
Sunol:	0

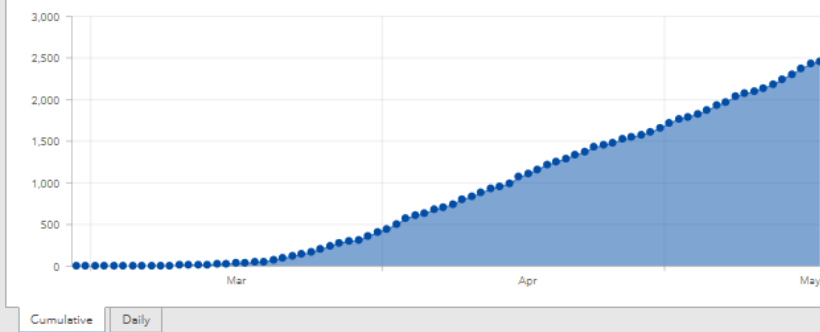
We are coordinating with Health Care for the Homeless and so the number homeless will change substantially.

### Alameda County Total

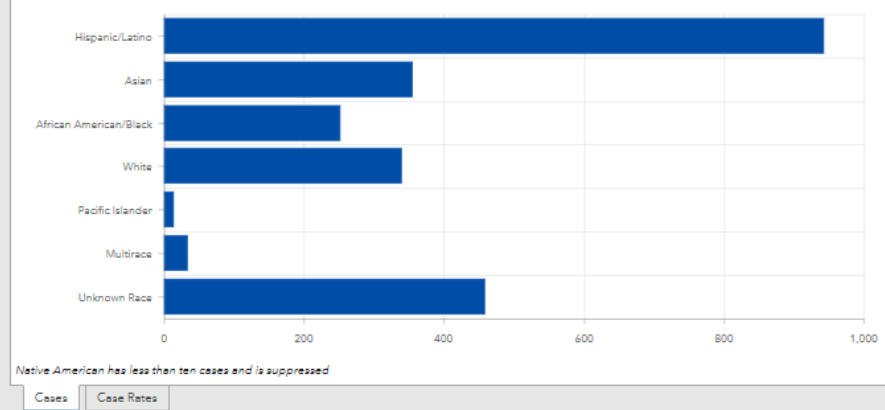
2,457  
Cases

83  
Deaths

Alameda County Total Cumulative Cases

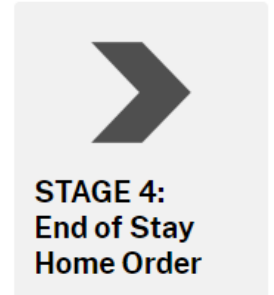
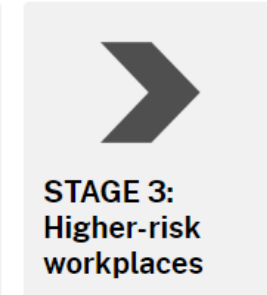
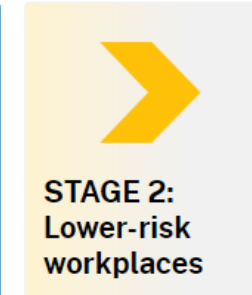


Alameda County Cases by Race/Ethnicity



# Alameda County: Early Stage 2

- **Modified SIP Order effective 5/18/20, allows additional businesses:**
  - Retail: curbside/storefront and delivery only
  - Manufacturing
  - Warehousing
- **Allowed businesses must comply with State and local guidance**
  - Social distancing, face coverings, administrative controls, employee training, enhanced cleaning and safety
- **Highly regulated vehicle based gatherings allowed 5/18/20**
  - Up to 200 cars for a maximum of 3 hours
  - Physical distancing and security requirements
  - Occupants of car must be from same household, may not leave care, and wear face coverings
- **COVID Recovery:** <http://www.acphd.org/2019-ncov/covid-recovery.aspx>

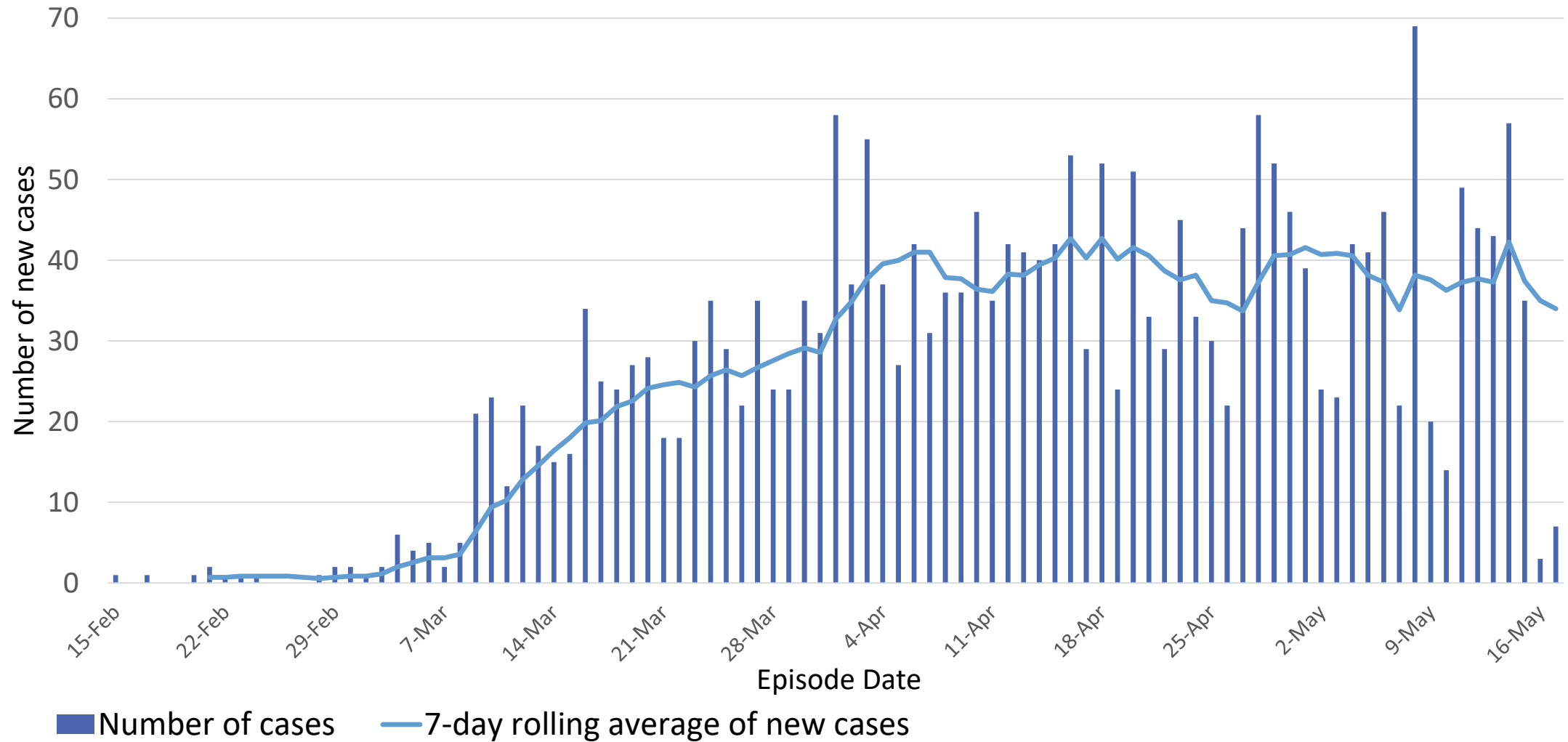


# Alameda County Progress

Indicator Status	Cases & Hospitalizations Flat or Decreasing	Sufficient Hospital & Surge Capacity	Sufficient Testing Capacity	Sufficient Disease Containment	Sufficient PPE
Related Activities	<ul style="list-style-type: none"> <li>Shelter in Place</li> <li>Clinical guidance</li> <li>Public guidance</li> </ul>	<ul style="list-style-type: none"> <li>Health care systems planning</li> <li>COVID-19 patients &lt;4% of hospital beds and &lt;12% of ICU beds</li> </ul>	<ul style="list-style-type: none"> <li>Goal 3100 tests/day</li> <li>As of 5/15 @ one-third of goal</li> </ul>	<ul style="list-style-type: none"> <li>Contact tracing expansion</li> <li>Isolation &amp; Quarantine support</li> <li>Encampment response</li> <li>Surveillance</li> <li>LTCF Task Force</li> <li>Equity lens</li> </ul>	<ul style="list-style-type: none"> <li>Procurement and fulfillment through EOC</li> <li>Still significant PPE requests from healthcare partners</li> </ul>



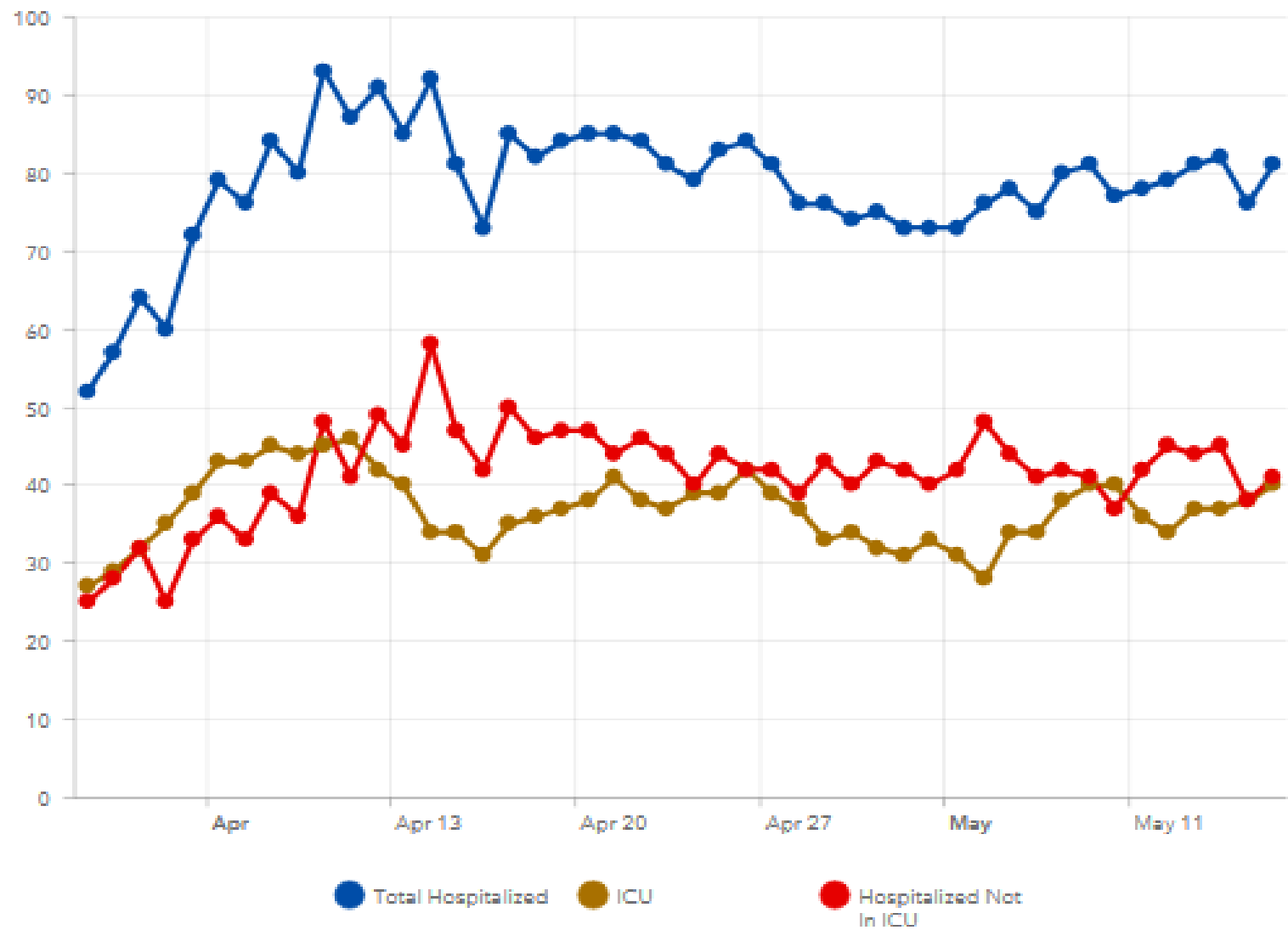
# New Alameda County COVID Cases, 2020



Source: CalREDIE Data Distribution Portal download May 18, 2020 10:45 am; includes CalREDIE entries through May 17, 2020.



# Alameda County COVID-19 Hospitalizations (as of May 16, 2020)



# New Testing Sites & Partnerships

- New testing sites for underserved areas
  - In partnership with City of Oakland, CORE and Verily Life Sciences
    - **Allen Temple Baptist Church**
    - **Roots Community Health Center**
  - In partnership with State and OptumServe at the **REACH Youth Center**
  - With these 3 new sites the goal is an additional 450 people / day being tested
  - Discussing testing sites with West Oakland Health Center and La Clinica
  - Working on strategy to expand testing to SNF and congregate settings

The screenshot displays the Alameda County Public Health Department website. The header includes the department name and navigation links: Home, Health Alerts, Programs & Services, Communicable Disease, Clinics, Data & Reports, About ACPHD, and Contact ACPHD. A secondary navigation bar lists: Division of Communicable Disease Control & Prevention, COVID-19, Coronavirus Disease (COVID-19) > Testing for COVID-19, and a search bar. The main content area is titled 'Testing for COVID-19' and lists 'Alameda County COVID-19 Testing Resources' with links to testing locations, food distribution maps, and testing maps. A 'Necessity of COVID-19 Testing' section provides guidance on when to get tested. A sidebar on the left contains links to Home, Health Officer Orders, Shelter in Place, Testing for COVID-19 (highlighted), Resources, For Clinicians, Isolation Housing, Press Releases, Alameda County Update Archive, and Contact Information. The footer contains contact information for the Alameda County Public Health Department, including address and phone number, and links to About ACPHD, Data & Reports, and Contact Us.

Alameda County Public Health Department

Start Here ▶ Health Alerts ▶ Font Size (+/-) ▶

Home Health Alerts Programs & Services Communicable Disease Clinics Data & Reports About ACPHD Contact ACPHD

Division of Communicable Disease Control & Prevention  
**COVID-19**

Coronavirus Disease (COVID-19) > Testing for COVID-19 Search Search

Coronavirus Disease (COVID-19)  
Home  
Health Officer Orders  
Shelter in Place  
**Testing for COVID-19**  
Resources  
For Clinicians  
Isolation Housing  
Press Releases  
Alameda County Update Archive  
Contact Information

**Testing for COVID-19**

**Alameda County COVID-19 Testing Resources**

- COVID-19 Testing Location  
English | Spanish | Arabic | Khmer | Simplified Chinese | Traditional Chinese | Vietnamese | Tagalog | Korean
- County of Alameda COVID-19 Food Distribution & Services Map (includes Testing Sites)
- Interactive COVID-19 Testing Map for California (CDPH)  
Find nearby test sites by address or zip code, and schedule appointments at State-run test sites.
- Blanket Isolation and Quarantine Orders

**Clinician Testing Information & Guidance**

**Necessity of COVID-19 Testing**

As there is no specific treatment for COVID-19 infection and COVID-19 testing capacity remains limited, people with mild illness should remain home until fully recovered. They should sleep in a separate room and use a separate bathroom from other household members when possible. Clean common areas regularly.

- **Contact your healthcare provider by phone** if you think you may have COVID-19 because of symptoms or exposure to someone suspected or known to be infected with COVID-19.
- If you have confirmed or suspected COVID-19, you must follow [Blanket Isolation and Quarantine Orders](#).
- If you develop **emergency warning signs for COVID-19**, you should get medical attention immediately.
- If you do not have insurance and are not receiving medical care at a clinic already, you may contact HealthPAC or the Community Health Clinic Network.

Alameda County Public Health Department  
1000 Broadway, Suite 500,  
Oakland, CA 94607  
(510) 267-8000  
©2013 Alameda County Public Health Department, All rights reserved  
Terms of Use | Privacy

**About ACPHD**  
Our Mission  
Our Organization  
Organization Chart

**Data & Reports**  
Data & Reports Web Site  
Reports by Topic  
Data Request Form

**Contact Us**  
How to Contact Us  
Office Locations  
Driving Directions  
Phone Directory

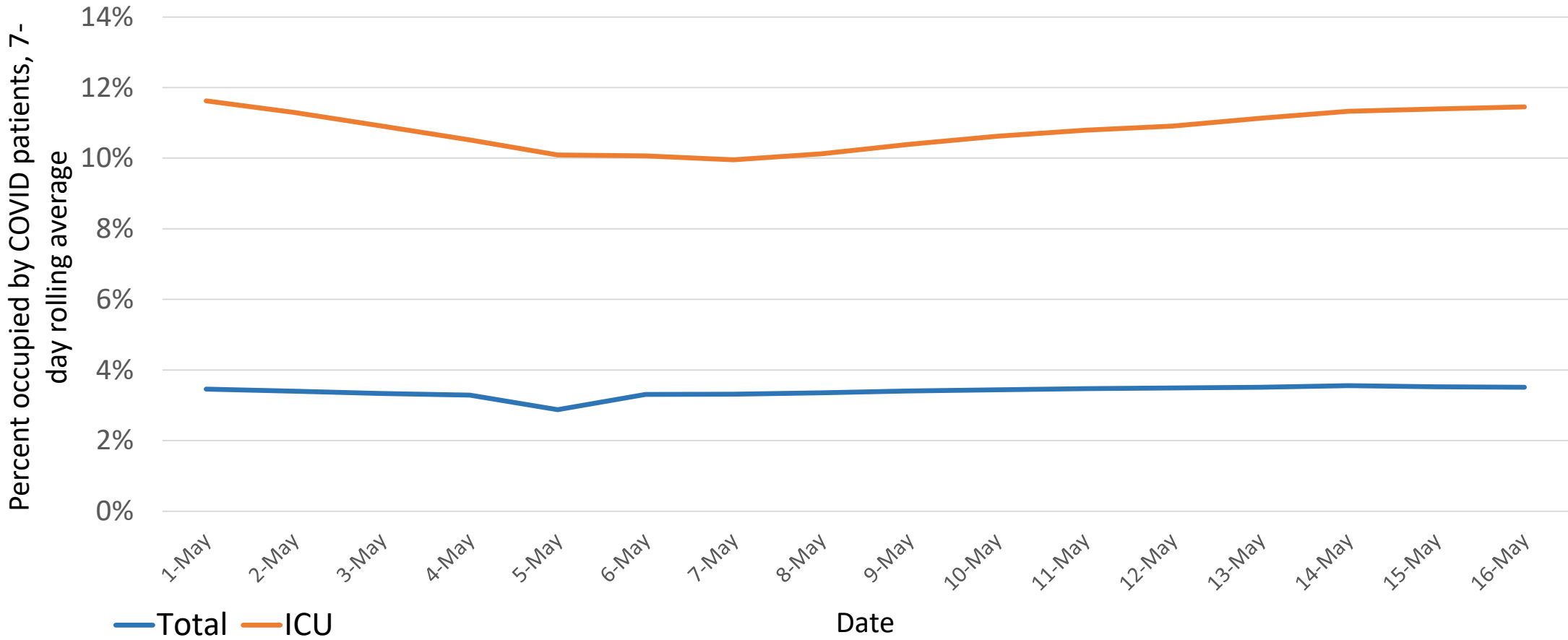
## Alameda County COVID-19 Testing





# Percent hospital beds occupied by COVID patients, Alameda County, 2020

## 7-day rolling average

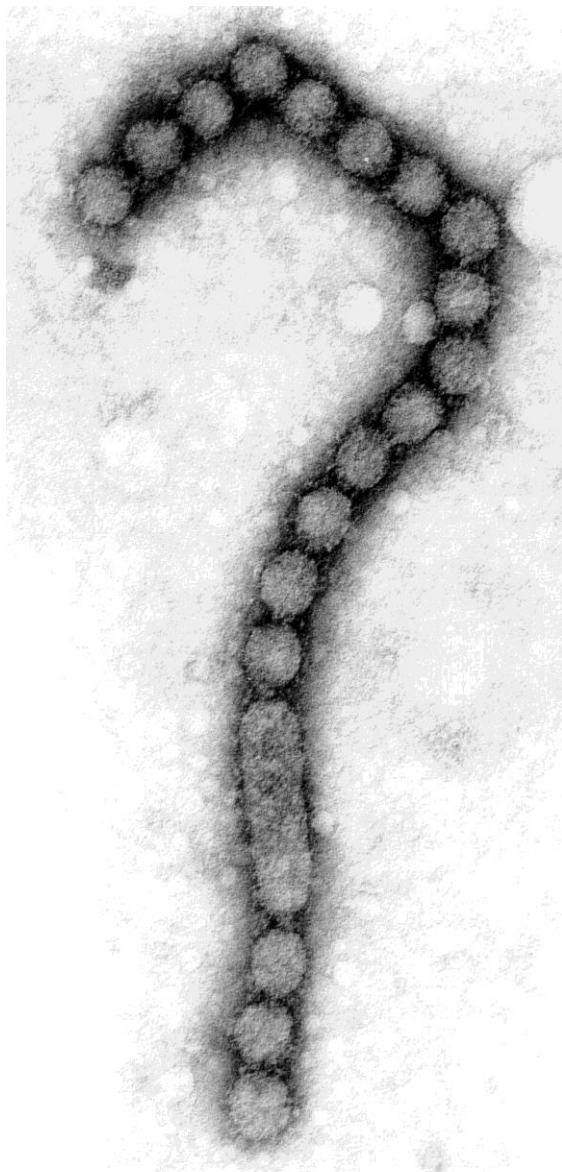


Source: California Department of Public Health. Denominators: Total beds – all staffable inpatient beds including surge; ICU beds – staffed ICU beds including surge.

# AHS/County Liaison on COVID-19

- County Liaison Team has made 8 hospital visits so far.
  - All 4 acute campuses
  - Multiple shifts and week day/week ends
  - Total 99 individuals interviewed so far in 22 units/floors
  - Observed conditions/availability of PPE
- Generally hearing from staff that:
  - PPE availability now is adequate, though access is controlled in some units
  - Staff noted “scary start” 3-5 weeks ago with rationing/reuse proposed and some things running out and inadequate training
  - Concerns expressed by staff the tone of communications between Administration and staff
- Site visits ongoing through end of May
- Interim findings given to BOS at Health Committee, Labor partners, BOT Exec
- Summary report to BOS with all findings after a total of 10 visits





**CORONAVIRUS UPDATES**  
Get the latest news from our Public Health Department

**INTERACTIVE MAP**  
**COVID-19 Food Distribution & Services MAP**  
The Alameda County Emergency Operations Center (EOC) Care & Shelter Branch in close coordination with Alameda County Community Food Bank, 211, and cities developed a countywide interactive map that includes food distribution sites and other essential services which are currently open under the COVID-19 Shelter-In-Place Order. The map will be updated regularly and remain active for the duration of the Shelter-In-Place Order.  
[Open Interactive Map](#)

**DONATIONS**  
**Help Us Fight COVID-19**  
Our Board of Supervisors has reactivated the Disaster Relief Fund. Due to the enormous and varied needs facing the community and the health care systems at this time, the county has established two separate funds. The Emergency Fund will provide needed services to those directly affected by the pandemic. The Recovery Fund will be used to purchase personal protective equipment and other supplies to assist those fighting the pandemic. You can also donate personal protective equipment.  
[Learn More / Donate](#)

**Get Email Updates**

**Thank you to our...**  
**health care workers,**  
**first responders,**

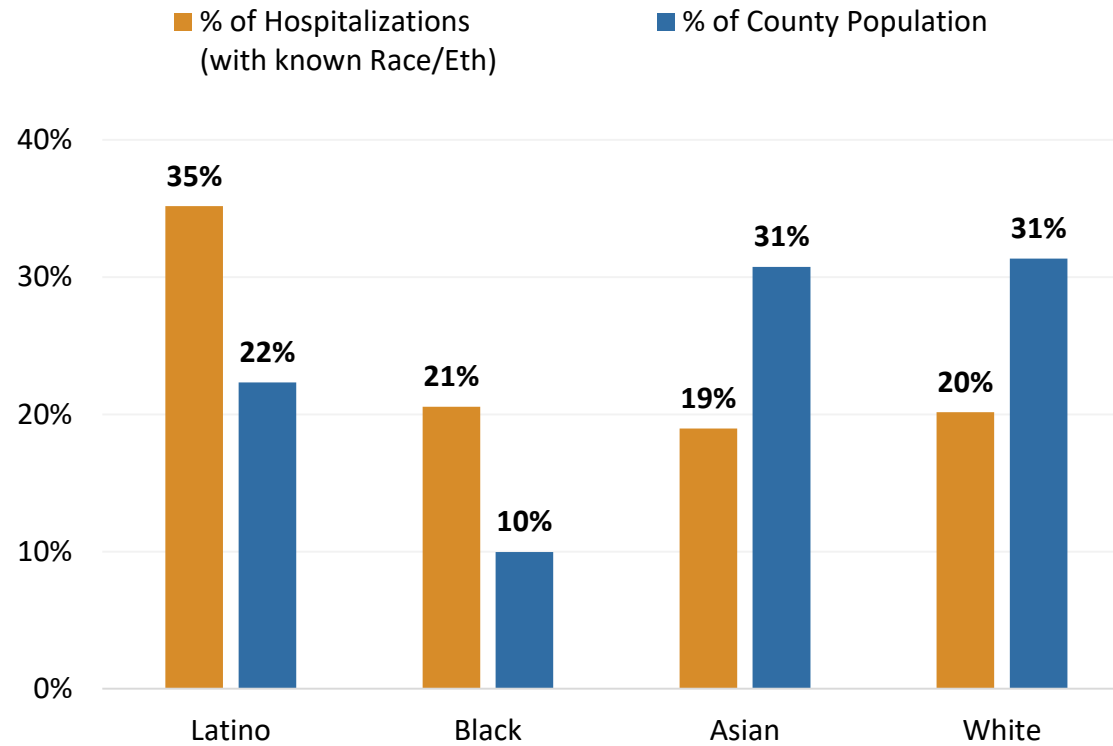
**PUBLIC SAFETY**  
**Face Coverings Now Required**  
Our Health Officer Dr. Erica Pan has issued an Order for all members of the public to wear face coverings when around people outside of their household. Face coverings can be simple and homemade, made of cloth, fabric, or other soft or permeable material without holes, that covers the

**ACPHD COVID-19 webpage: [acphd.org/2019-ncov](https://acphd.org/2019-ncov)**

Email questions to: [nCov@acgov.org](mailto:nCov@acgov.org)

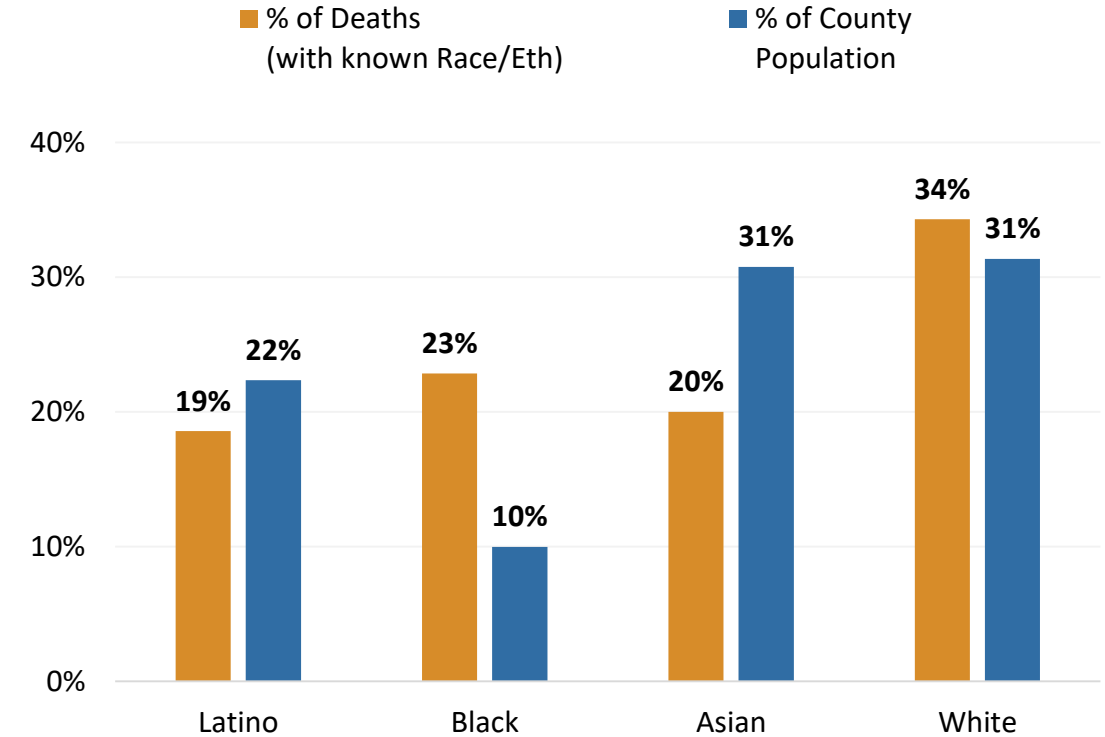


## Proportion of COVID-19 Hospitalizations by Race/Ethnicity Compared to Proportion of County Population



Note: Includes hospitalizations with known race (92%); Data as of 5/8/20

## Proportion of COVID-19 Deaths by Race/Ethnicity Compared to Proportion of County Population

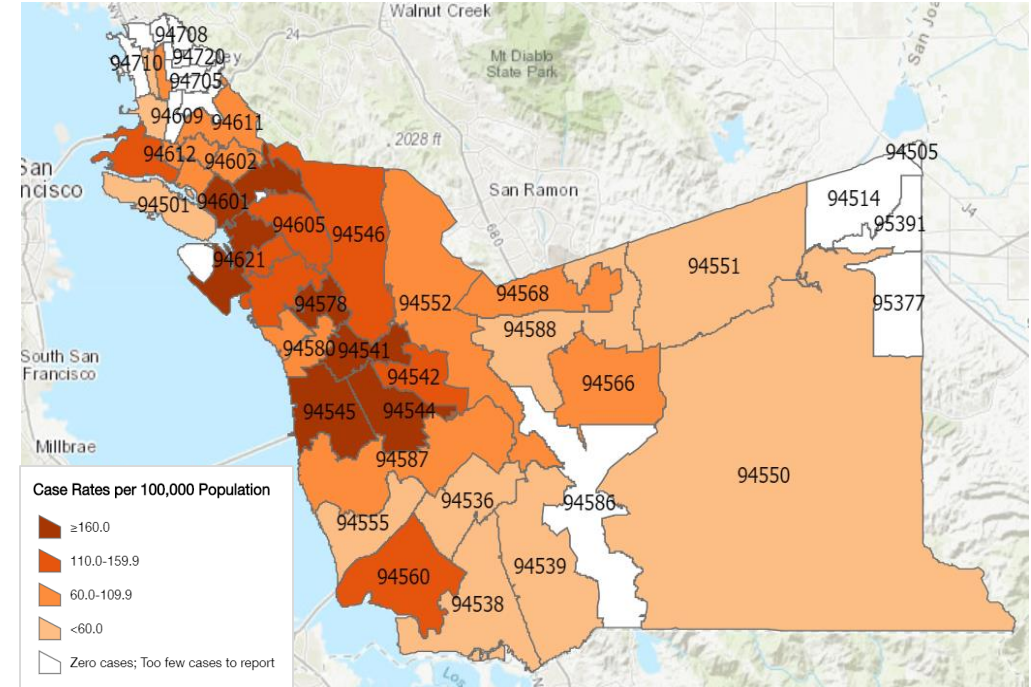


Note: Includes deaths with known race (100%); Data as of 5/8/20

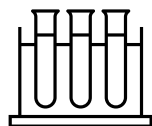


# HCSA Health Equity Task Force

- **Focus on communities with high COVID-19 disease burden**
  - African American, Latinx, Pacific Islander
  - West Oakland, East Oakland, Ashland/Cherryland and parts of South Hayward
- **Actionable initiatives supporting HCSA DOC disease response strategy**
  - Increased testing access for communities of color
  - Cultural sensitivity in case and contact investigations
  - Tailored and language responsive messaging
  - Improved race/ethnicity data quality and integrity
  - Health, social and economic supports to help people isolate and quarantine



# Institutional & Community Priorities for Action to Promote Racial Equity in COVID-19 Response and Recovery



**Expanded  
&  
Targeted  
Testing**



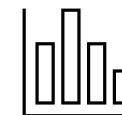
**Emergency  
Economic  
Assistance &  
Social  
Benefits**



**Isolation/  
Quarantine  
Supports &  
Protective  
Measures for  
High-Risk**



**Targeted  
Resources,  
Messaging,  
& Supports for  
Marginalized/  
Impacted**



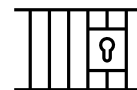
**Data  
Surveillance**



**Moratorium  
on Evictions,  
Foreclosures, &  
Utility Shutoffs**



**Protective  
Measures  
for People  
Experiencing  
Homelessness**



**Protective  
Measures  
for People  
who are  
Incarcerated**



**Healthcare,  
Emergency  
Assistance, &  
Sanctuary for  
Immigrants**

