



# CORONAVIRUS UPDATES

Get the latest news from our Public Health Department

## COVID-19 (Novel Coronavirus) Update

**Health Committee**  
**May 11, 2020**

**Colleen Chawla, Director**  
Health Care Services Agency

**Erica Pan, MD, MPH, FAAP**  
Interim County Health Officer



### Bay Area

**9,819**  
cases

87 on May 10

**347**  
deaths

2 on May 10

### California

**67,868**  
cases

1,067 on May 10

**2,717**  
deaths

27 on May 10

### United States

**1,329,072**  
cases

25,621 on May 9

**79,522**  
deaths

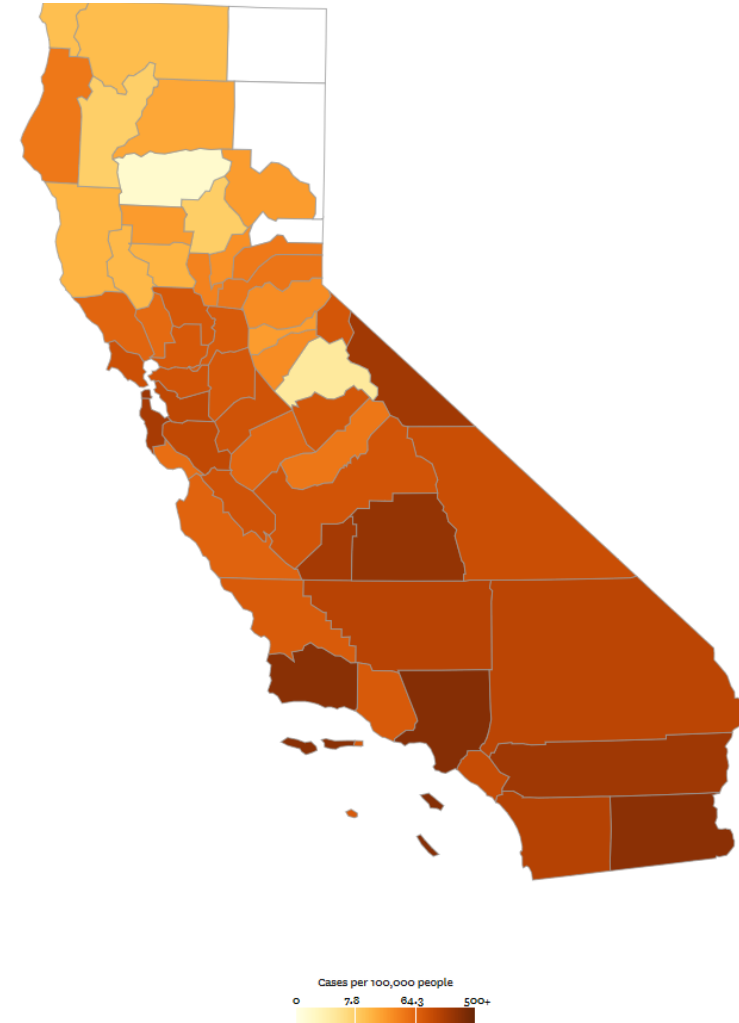
1,615 on May 9

## Coronavirus Tracker

The Chronicle is mapping every reported coronavirus case in the Bay Area, California and the U.S. We are tallying the number of tests reported, new confirmed cases, hospitalizations and deaths reported across the state by day.

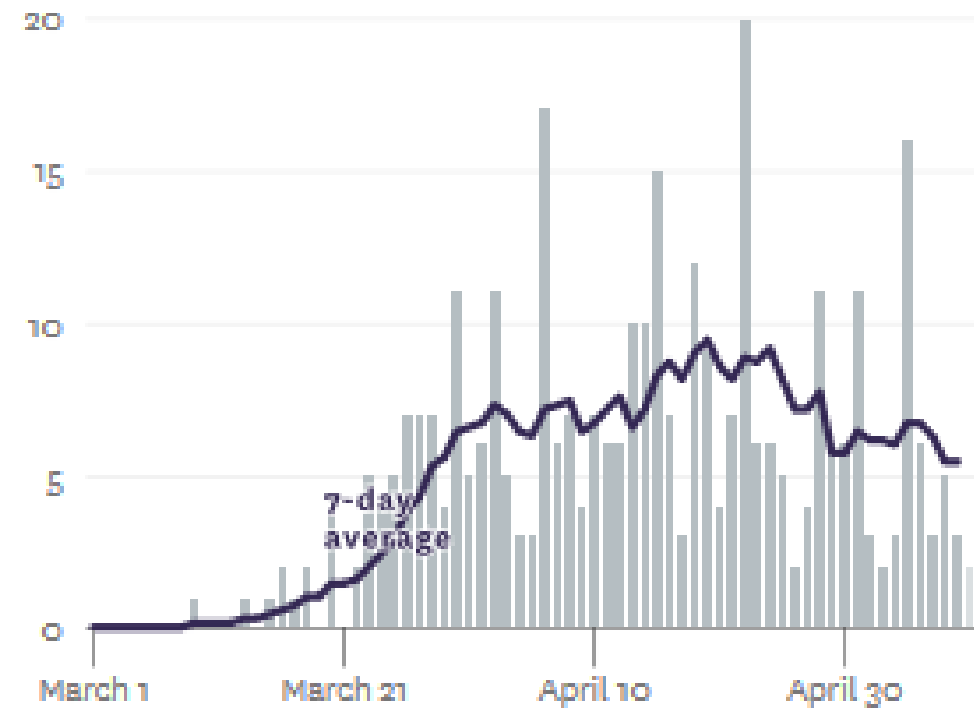
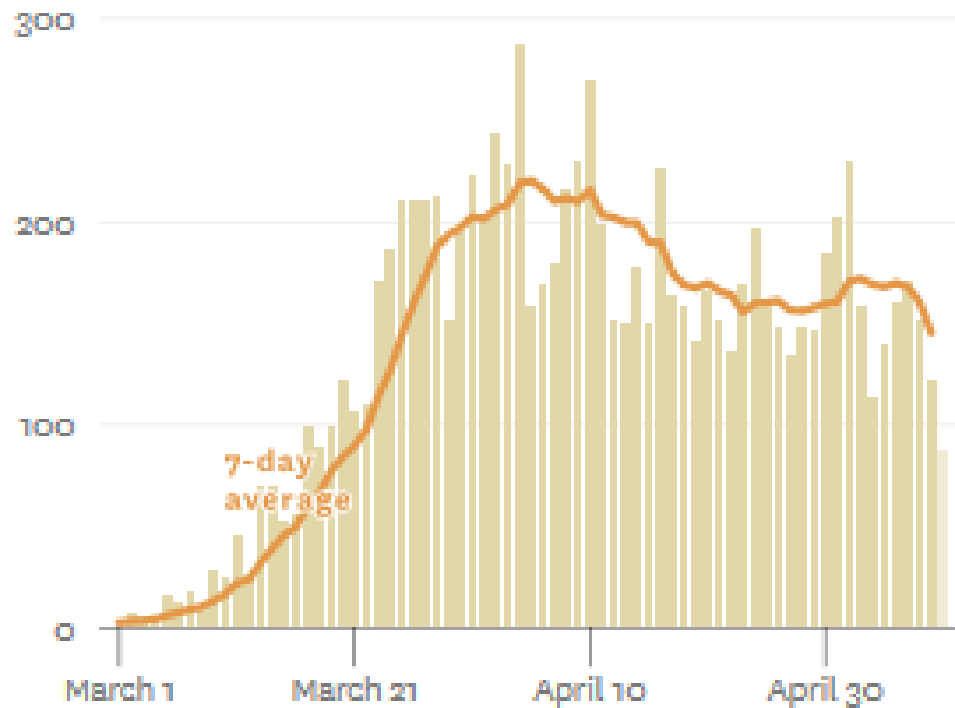
By [CHRONICLE DIGITAL TEAM](#) | LAST UPDATED: May 10, 2020 5:01 p.m.

California cases are organized by reporting county. Cases are based on reports from the U.S. Centers for Disease Control and Prevention, the California Department of Public Health and county public health departments, plus exclusive Chronicle reporting. For more information on the data, please [read about our methodology](#).



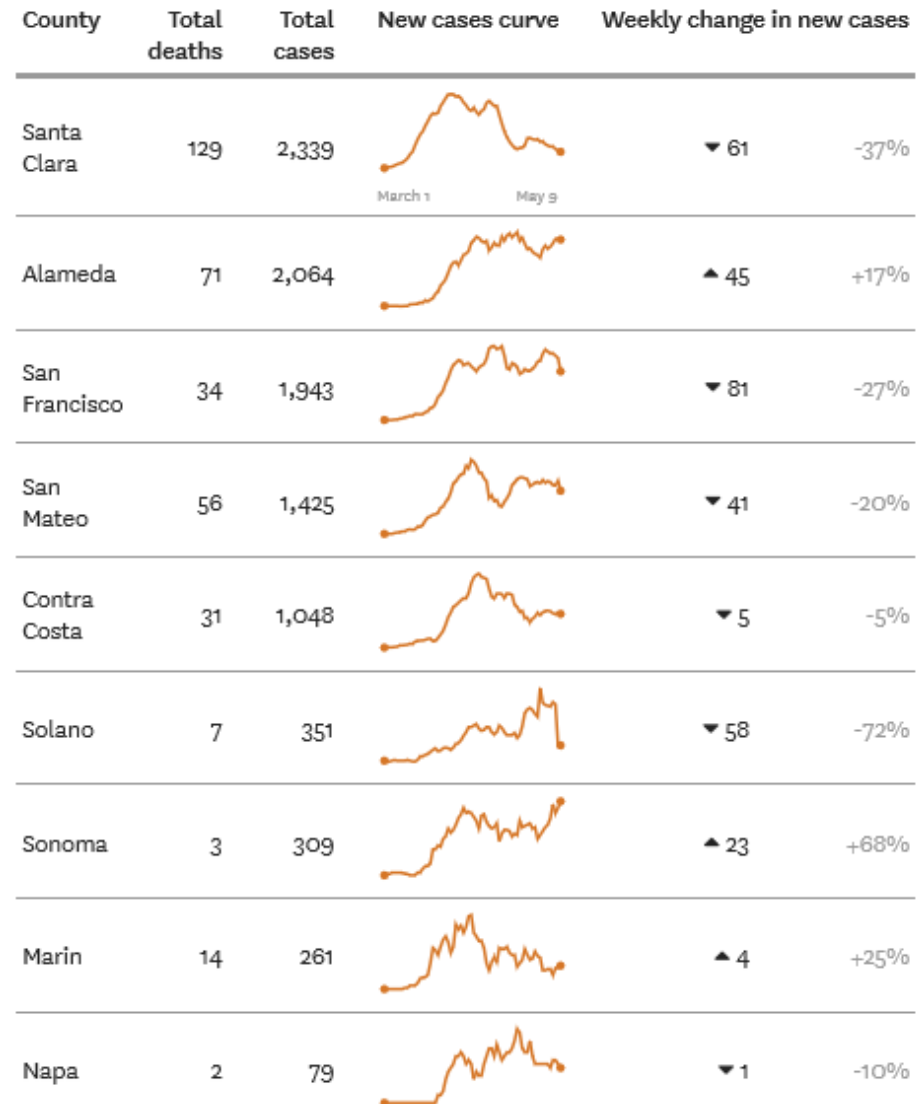
As of 5/10/20

## New reported cases and deaths in the Bay Area, by day



# COVID-19 in Alameda County and Greater Bay Area

- Alameda County (as of 5/10/20)
  - 2,064 cases in Alameda County health jurisdiction; 70 deaths
  - 66 cases in Berkeley health jurisdiction; 1 death





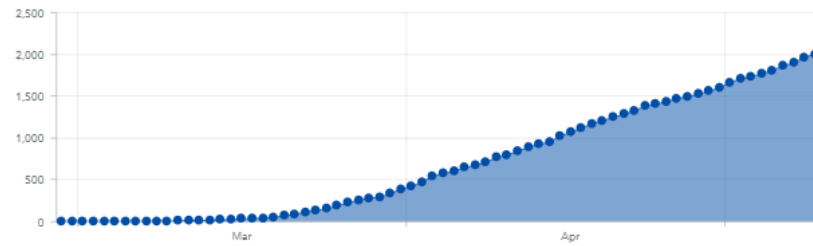
# Alameda County COVID-19 Dashboard Updated 5/10/2020 with data through the end of 5/9/2020

## Alameda County LHJ

**1,998**  
Cases

**70**  
Deaths

### Alameda County LHJ Cumulative Cases



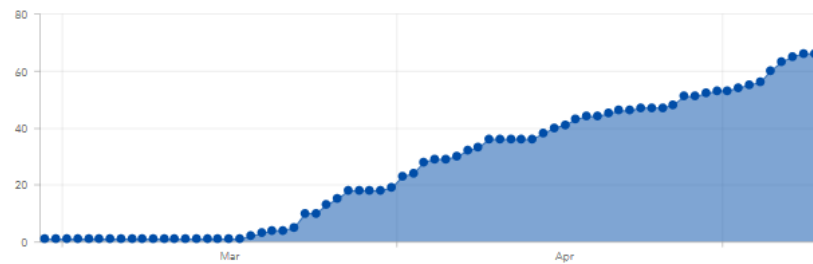
Cumulative Daily

## Berkeley LHJ

**66**  
Cases

**1**  
Deaths

### Berkeley LHJ Cumulative Cases



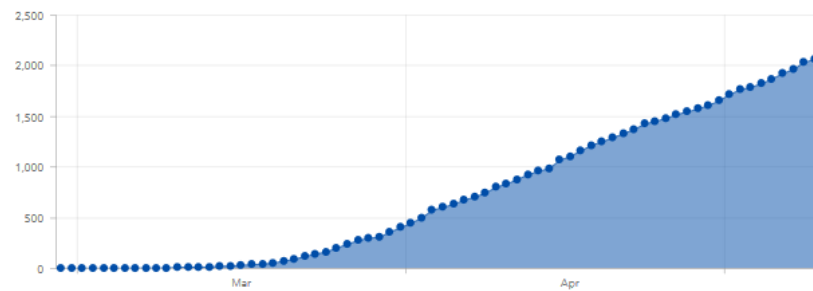
Cumulative Daily

## Alameda County Total

**2,064**  
Cases

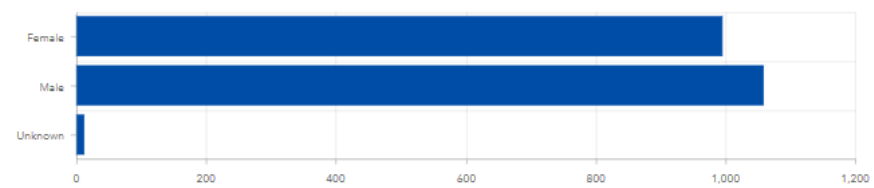
**71**  
Deaths

### Alameda County Total Cumulative Cases



Cumulative Daily

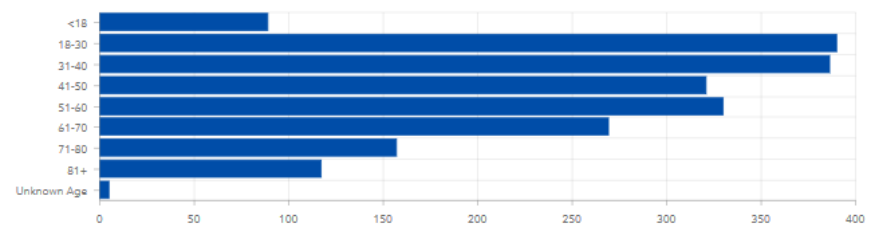
### Alameda County Cases by Sex



FTM and MTF are each less than ten and so are suppressed.

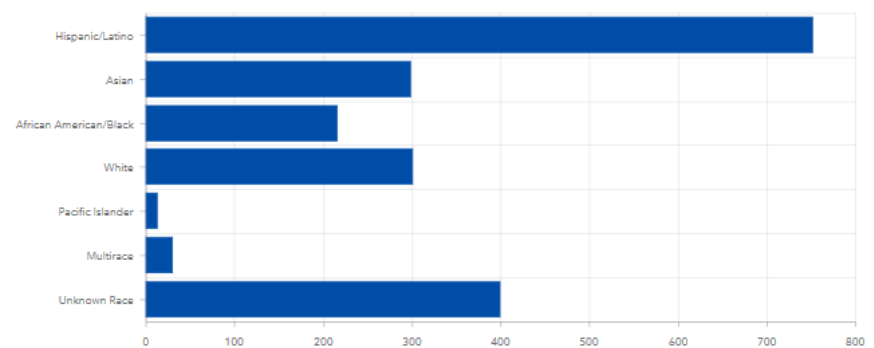
Cases Case Rates

### Alameda County Cases by Age Group



Cases Case Rates

### Alameda County Cases by Race/Ethnicity



Native American has less than ten cases and is suppressed

Cases Case Rates

[Click here to go to our mobile dashboard.](#)

[Click here to go to our second dashboard with data on deaths by race/ethnicity, hospitalizations, and cases and case rates by zip code.](#)

### Alameda County Cases by City/Jurisdiction

Alameda County:	2064
Berkeley LHJ:	66
Alameda County LHJ:	1998
Under Investigation:	3
Known Homeless:	26
No Address (May Be Homeless):	7
Santa Rita Jail*:	39
Alameda:	39
Albany:	<10
Dublin:	26
Emeryville:	<10
Fremont:	117
Hayward:	434
Livermore:	42
Newark:	63
Oakland:	656
Piedmont:	10
Pleasanton:	54
San Leandro:	110
Union City:	83
Eden Area MAC (Ashland, Cherryland, Hayward Acres, San Lorenzo):	164
Castro Valley MAC:	101
Fairview MAC:	<10
Sunol:	0

Cases Case Rates

We are coordinating with Health Care for the Homeless and so the number homeless will change substantially.

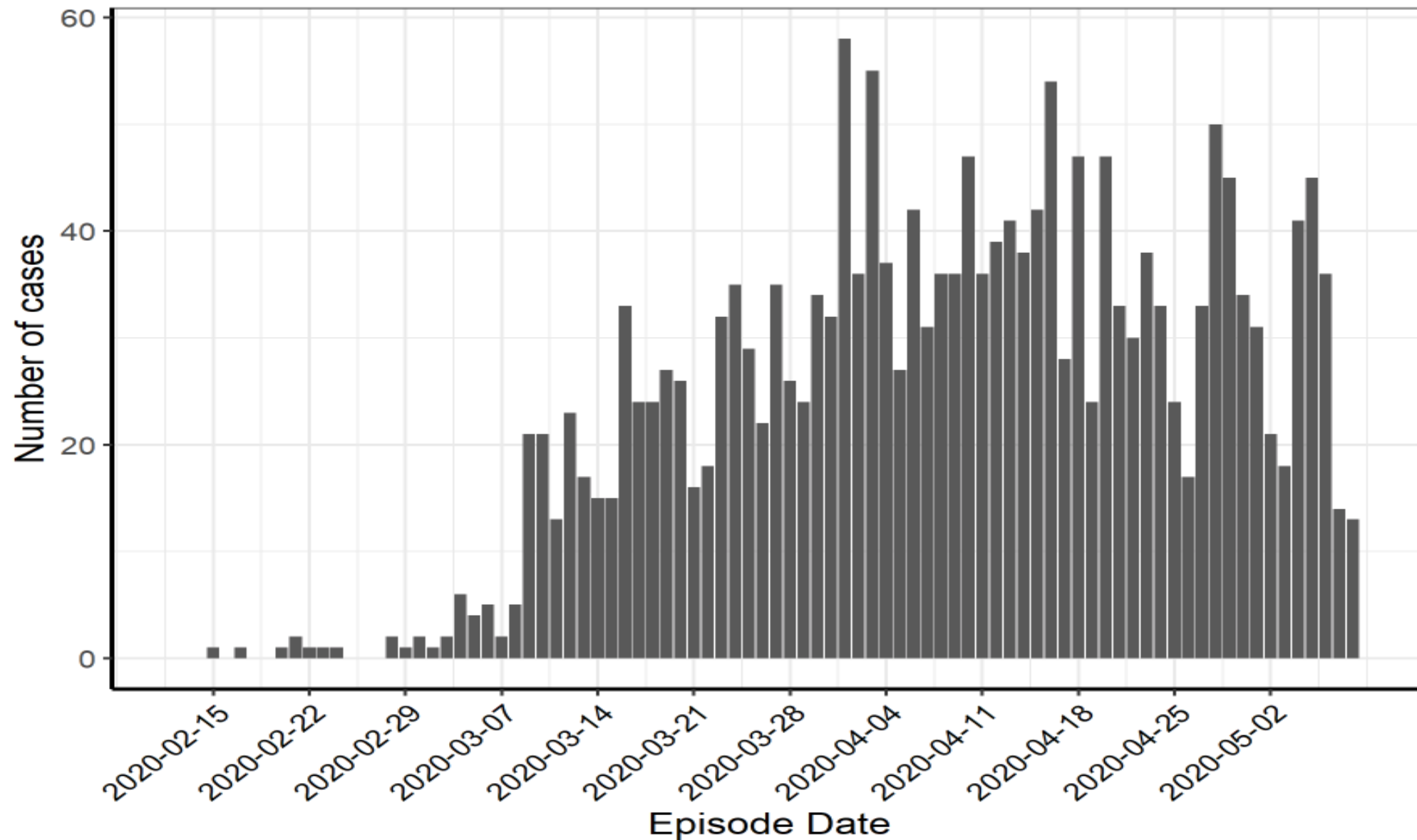


Alameda County  
Health Care Services Agency



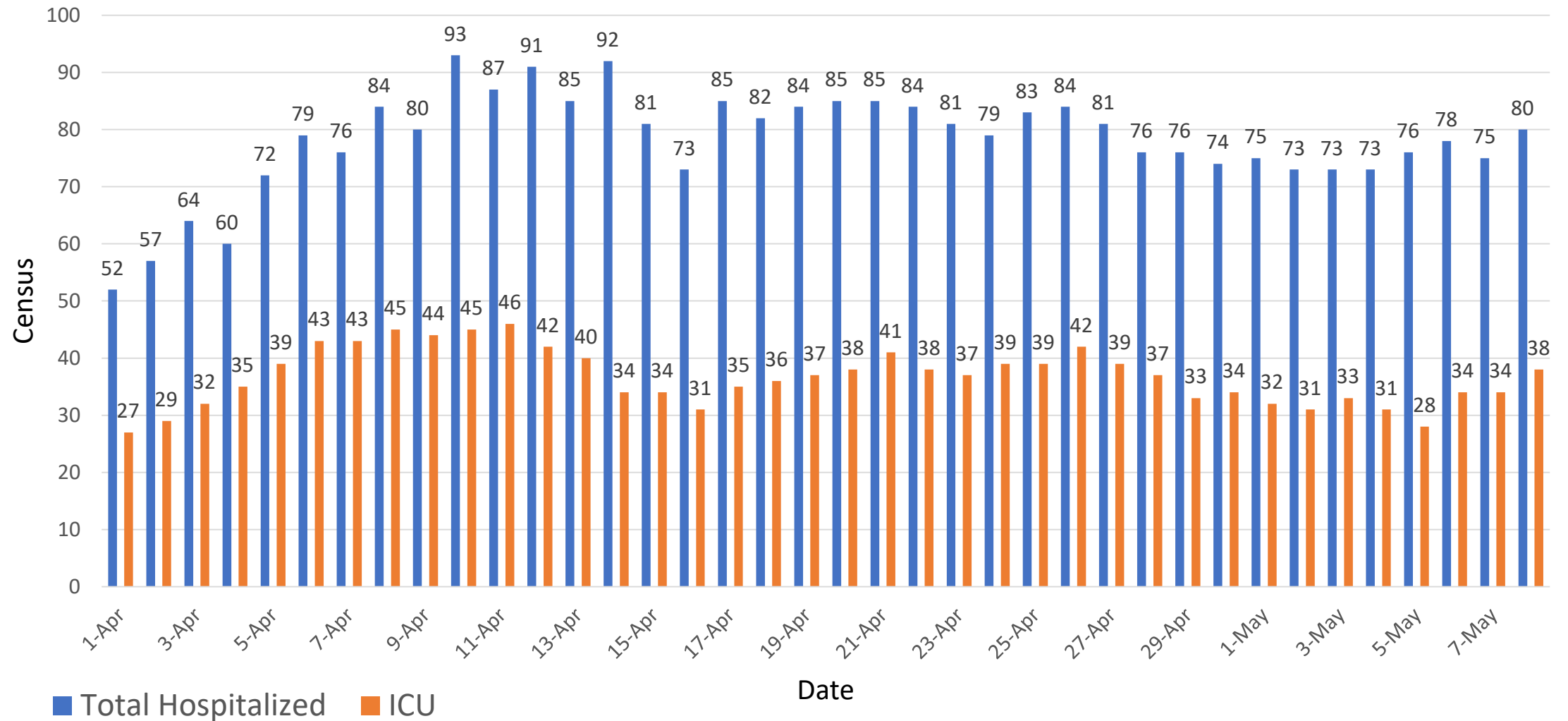
Alameda County Public Health Department  
Celebrating Healthy People in Healthy Communities

Epi curve of COVID-19 cases in Alameda County



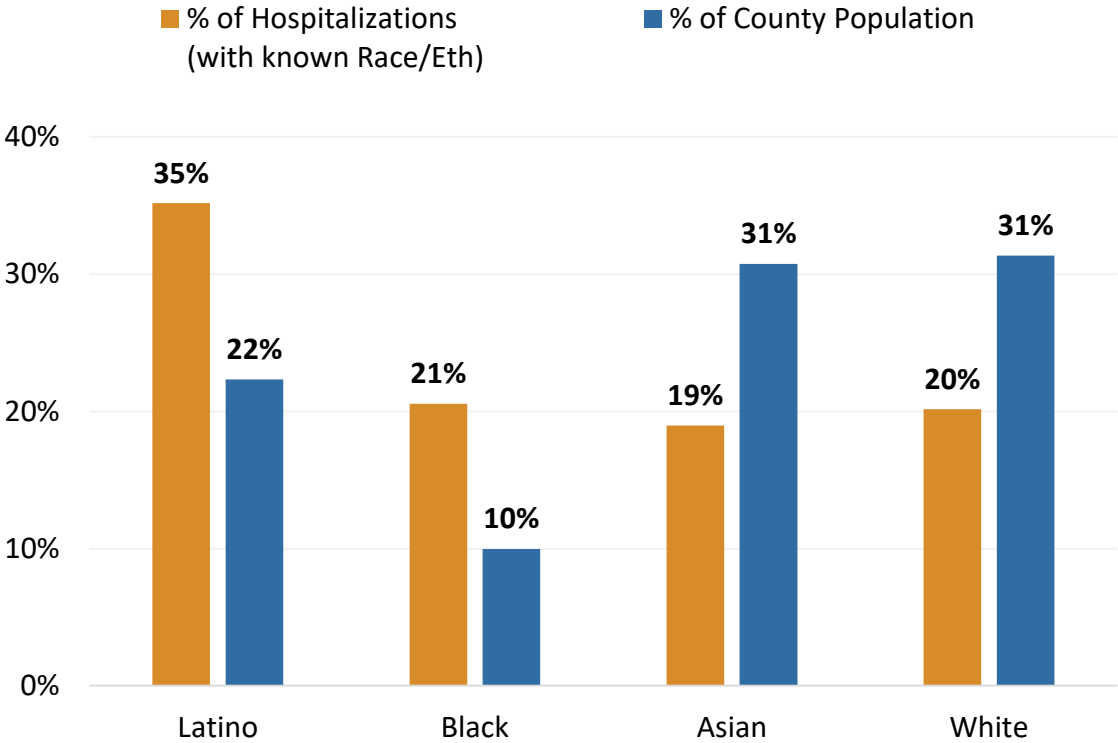
Source: CalREDIE Data Distribution Portal download May 9, 2020 9:45 am; includes CalREDIE entries through May 8,2020.

# COVID-19 positive patients hospitalized in Alameda County, 2020

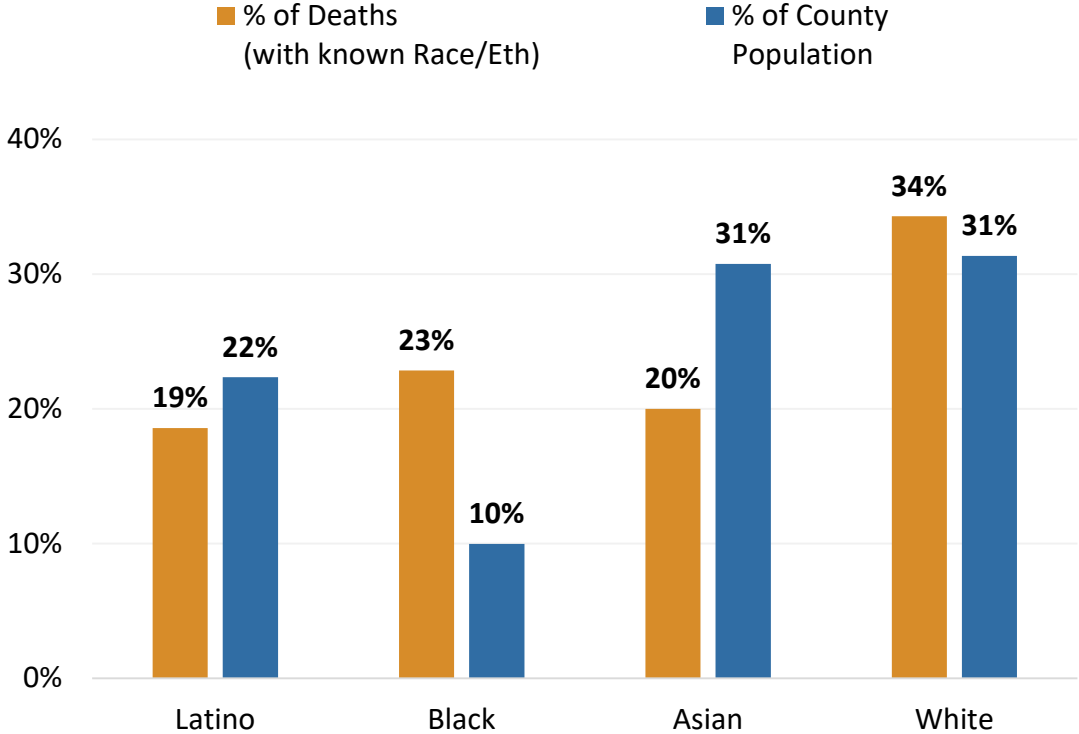


Source: [https://data.chhs.ca.gov/dataset/california-covid-19-hospital-data-and-case-statistics/resource/6cd8d424-dfaa-4bdd-9410-a3d656e1176e?inner\\_span=True](https://data.chhs.ca.gov/dataset/california-covid-19-hospital-data-and-case-statistics/resource/6cd8d424-dfaa-4bdd-9410-a3d656e1176e?inner_span=True)

Proportion of COVID-19 Hospitalizations by Race/Ethnicity Compared to Proportion of County Population



Proportion of COVID-19 Deaths by Race/Ethnicity Compared to Proportion of County Population



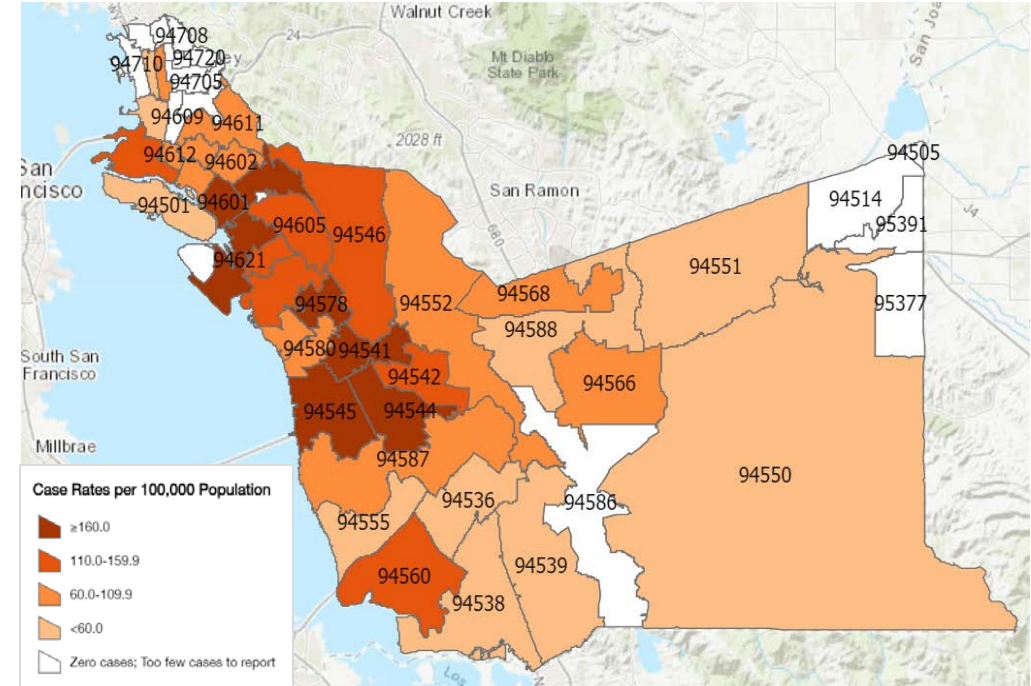
Note: Includes hospitalizations with known race (92%); Data as of 5/8/20

Note: Includes deaths with known race (100%); Data as of 5/8/20

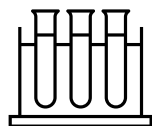


# HCSA Health Equity Task Force

- **Focus on communities with high COVID-19 disease burden**
  - African American, Latinx, Pacific Islander
  - West Oakland, East Oakland, Ashland/Cherryland and parts of South Hayward
- **Actionable initiatives supporting HCSA DOC disease response strategy**
  - Increased testing access for communities of color
  - Cultural sensitivity in case and contact investigations
  - Tailored and language responsive messaging
  - Improved race/ethnicity data quality and integrity
  - Health, social and economic supports to help people isolate and quarantine



# Institutional & Community Priorities for Action to Promote Racial Equity in COVID-19 Response and Recovery



**Expanded  
&  
Targeted  
Testing**



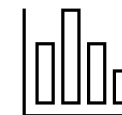
**Emergency  
Economic  
Assistance &  
Social  
Benefits**



**Isolation/  
Quarantine  
Supports &  
Protective  
Measures for  
High-Risk**



**Targeted  
Resources,  
Messaging,  
& Supports for  
Marginalized/  
Impacted**



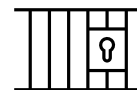
**Data  
Surveillance**



**Moratorium  
on Evictions,  
Foreclosures, &  
Utility Shutoffs**



**Protective  
Measures  
for People  
Experiencing  
Homelessness**



**Protective  
Measures  
for People  
who are  
Incarcerated**



**Healthcare,  
Emergency  
Assistance, &  
Sanctuary for  
Immigrants**



# Testing Updates

- Long term goals
  - All symptomatic persons
  - Community surveillance – sustainable
  - 3,100 tests/day
- Testing Task Force
- Testing survey conducted



- Public Health testing priorities:
  - Staff/residents of residential care facilities
  - Symptomatic health care personnel/medical first responders/essential infrastructure workers
  - Other congregate living settings
  - Outbreak investigations
  - Homeless
  - High-risk contacts
  - Hospitalized & critically ill
  - Deaths
  - Others at higher risk
- Public Health lab testing capacity
  - Up to 200/day, 7d/week
  - Surge can be sent to UCSF CZ Biohub, in discussion with other labs



# New Testing Sites & Partnerships

- Testing sites for underserved areas
  - In partnership with City of Oakland, CORE and Verily Life Sciences
    - **Allen Temple Baptist Church** (launching this week)
    - **Roots Community Health Center** (launched May 6)
  - In partnership with State and OptumServe
    - **REACH Youth Center** (launching this week)
    - **Alameda County offices in Hayward** at 224 W Winton Ave (launching this week)

The screenshot displays the Alameda County Public Health Department website. The header includes the department name and navigation links: Home, Health Alerts, Programs & Services, Communicable Disease, Clinics, Data & Reports, About ACPHD, and Contact ACPHD. A secondary navigation bar shows 'Start Here', 'Health Alerts', and 'Font Size (+/-)'. The main content area is titled 'Division of Communicable Disease Control & Prevention COVID-19' and 'Coronavirus Disease (COVID-19) > Testing for COVID-19'. A left sidebar lists links: Coronavirus Disease (COVID-19) Home, Health Officer Orders, Shelter in Place, Testing for COVID-19 (highlighted), Resources, For Clinicians, Isolation Housing, Press Releases, Alameda County Update Archive, and Contact Information. The main content area features a 'Testing for COVID-19' section with 'Alameda County COVID-19 Testing Resources' and a 'Necessity of COVID-19 Testing' section. A 'Clinician Testing Information & Guidance' button is also present. The footer contains contact information for the Alameda County Public Health Department, including the address (1000 Broadway, Suite 500, Oakland, CA 94607), phone number ((510) 267-8000), and copyright notice (©2013 Alameda County Public Health Department, All rights reserved). It also includes links for Terms of Use and Privacy, and a table with links for About ACPHD, Data & Reports, and Contact Us.

Alameda County Public Health Department

Start Here | Health Alerts | Font Size (+/-)

Home | Health Alerts | Programs & Services | Communicable Disease | Clinics | Data & Reports | About ACPHD | Contact ACPHD

Division of Communicable Disease Control & Prevention  
**COVID-19**

Coronavirus Disease (COVID-19) > Testing for COVID-19

Testing for COVID-19

Alameda County COVID-19 Testing Resources

- COVID-19 Testing Location  
English | Spanish | Arabic | Khmer | Simplified Chinese | Traditional Chinese | Vietnamese | Tagalog | Korean
- County of Alameda COVID-19 Food Distribution & Services Map (includes Testing Sites)
- Interactive COVID-19 Testing Map for California (CDPH)  
Find nearby test sites by address or zip code, and schedule appointments at State-run test sites.
- Blanket Isolation and Quarantine Orders

**Clinician Testing Information & Guidance**

**Necessity of COVID-19 Testing**

As there is no specific treatment for COVID-19 infection and COVID-19 testing capacity remains limited, people with mild illness should remain home until fully recovered. They should sleep in a separate room and use a separate bathroom from other household members when possible. Clean common areas regularly.

- **Contact your healthcare provider by phone** if you think you may have COVID-19 because of symptoms or exposure to someone suspected or known to be infected with COVID-19.
- If you have confirmed or suspected COVID-19, you must follow [Blanket Isolation and Quarantine Orders](#).
- If you develop **emergency warning signs for COVID-19**, you should get medical attention immediately.
- If you do not have insurance and are not receiving medical care at a clinic already, you may contact [HealthPAC](#) or the [Community Health Clinic Network](#).

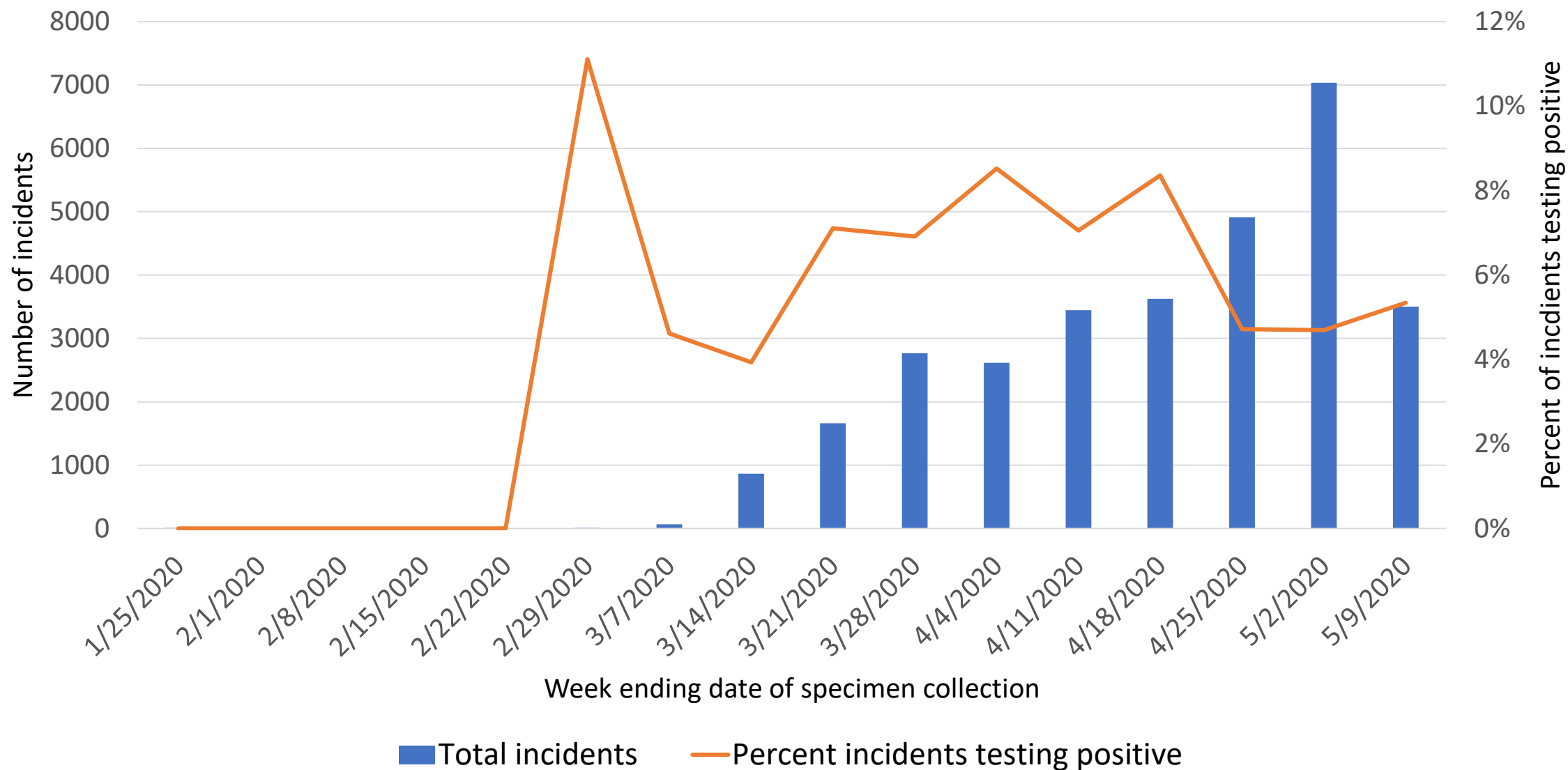
Alameda County Public Health Department  
1000 Broadway, Suite 500,  
Oakland, CA 94607  
(510) 267-8000

©2013 Alameda County Public Health Department, All rights reserved

Terms of Use | Privacy

About ACPHD	Data & Reports	Contact Us
Our Mission	Data & Reports Web Site	How to Contact Us
Our Organization	Reports by Topic	Office Locations
Organization Chart	Data Request Form	Driving Directions
		Phone Directory

# Alameda County COVID-19 Testing



Sources: 1) CalREDIE Data Distribution Portal download May 9, 2020 1:30pm; includes CalREDIE entries through May 8, 2020. 2) Avellino non-positive results received through May 8, 2020 2:30 am from Avellino spreadsheets.

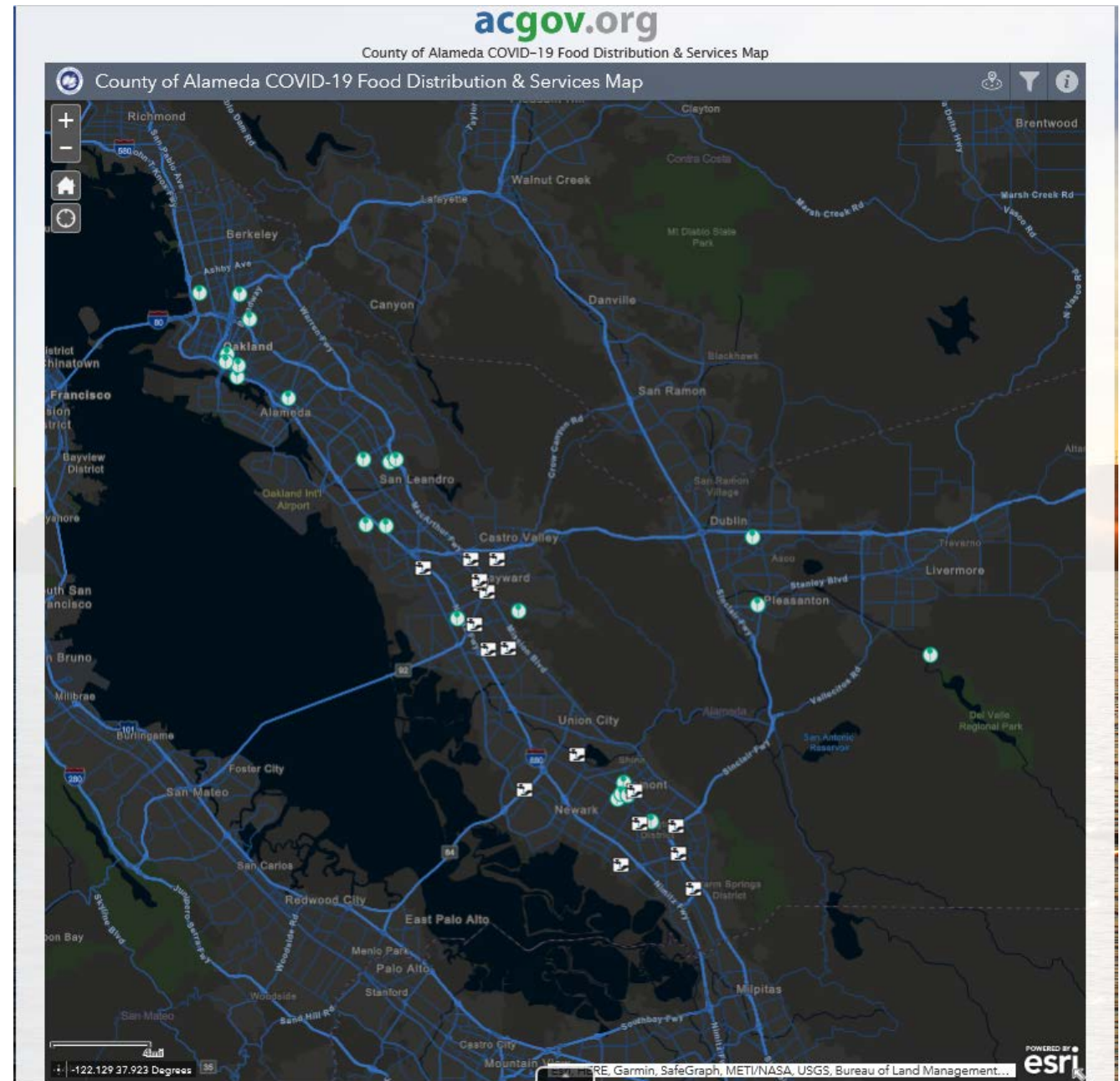


# The ACGOV Interactive Service Location Map

Information about testing sites and hygiene stations was recently added

The map is at  
<https://www.acgov.org/maps/food-services.htm>

It also provides information about  
Provides information about food  
services, shelter and transportation  
to food pickup



# Antibody Testing/Serology & Other Emerging Data

- Rapid disposable tests/point of care are not currently reliable
- Use and reliability depends on prevalence of disease in population tested
  - With low prevalence (<5%), positive predictive value is only 50-60%
- Further data needed to inform future use, reliability and significance

## TRACK COVID Study

- Regional surveillance project with UCSF, Stanford and ZSFGH funded by CZ Biohub thru 2020
- Systematic sampling weighted by zip code case rates
- PCR & Antibody testing serially over time
- Subset of health care workers

## CZ Biohub Genomic Sequencing

## California Emerging Infections Program

- Enhanced surveillance of HCWs with COVID19
  - Clinical work & PPE Use
- Enhanced surveillance & data collection on all hospitalized cases



# Key State Actions

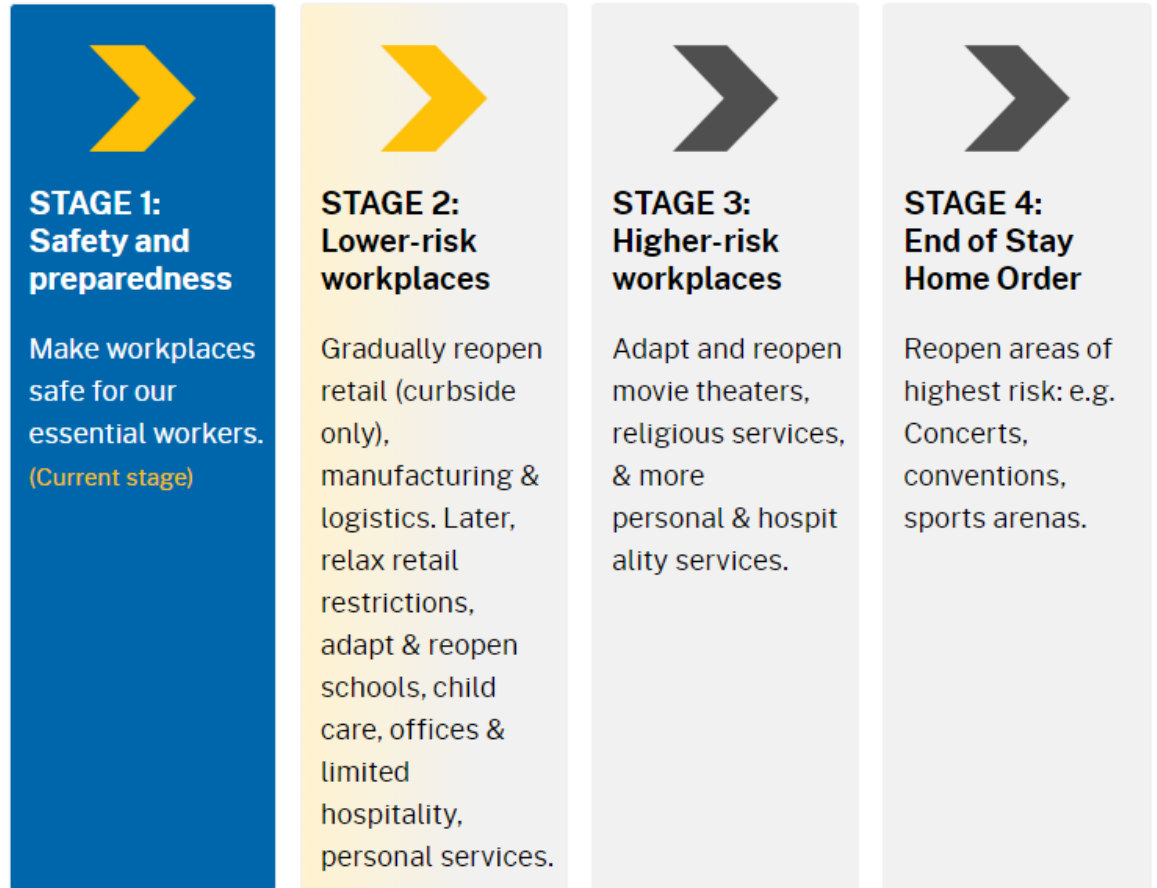
- 5/8/20: **Governor issues Exec Order to facilitate mail-in voting** for all registered voters for November election
- 5/8/20: **CA Health Officer allows limited re-opening curbside retail and associated manufacturing**
  - Counties may maintain stricter measures & Alameda County & Bay Area have not yet re-opened curbside retail
- 5/6/20: **Governor issues Exec Orders to**
  - **extend Workers' Compensation benefits** to all essential employees diagnosed with COVID-19 since March 19<sup>th</sup>
  - **extend deadlines and waive penalties for individual and small business property taxes**
- 5/5/20: **CA announces Contact Tracing training partnership with UCSF/UCLA;** technology platforms, training, and trained state employees to be available to local health jurisdictions





# CA allowed to move to Stage 2 of Resilience Roadmap on May 8

- **Counties may delay or accelerate adoption** of relaxation efforts based on local data and conditions
  - Counties moving faster must attest to disease containment metrics
- **Alameda County NOT yet in Stage 2**
- **Early Stage 2** : curbside & delivery: bookstores, jewelry stores, toy stores, clothing stores, shoe stores, home and furnishing stores, sporting goods stores, antique stores, music stores, florists
- **Later Stage 2**: restrictions relaxed for destination retail, schools, child care, offices, dine-in restaurants, outdoor museums
- State issued guidance for businesses



# Alameda County: Getting to Stage 2

- **Modified Bay Area SIP order effective 5/4/20, allows:**
  - All Construction projects
  - Low-risk outdoor businesses
  - Increased outdoor activities
  - Childcare and camps for children of people permitted to work outside their homes
- **Anticipate  $\geq$  2 weeks to see shift in indicators**
- **COVID Recovery Planning**
  - All businesses/organizations encouraged to plan for physical distancing, safety, and cleaning protocols for safe reopening
  - Aligning with State's guidance for businesses, with local modifications as needed
  - [COVIDrecovery@acgov.org](mailto:COVIDrecovery@acgov.org): technical assistance for business regarding COVID-19 plans



# Alameda County Progress

Indicator Status	Cases & Hospitalizations Flat or Decreasing	Sufficient Hospital and Surge Capacity	Sufficient Testing Capacity	Sufficient Disease Containment	Sufficient PPE
Related Activities	<ul style="list-style-type: none"> <li>Shelter in Place</li> <li>Clinical guidance</li> <li>Public guidance</li> </ul>	<ul style="list-style-type: none"> <li>Health care systems planning</li> <li>~6% of hospital beds COVID+/suspected</li> <li>~15% ICU beds</li> </ul>	<ul style="list-style-type: none"> <li>Countywide testing network @ 31 sites</li> <li>Goal 3100 tests/day</li> <li>As of 5/4 &gt;one-fourth of the way</li> </ul>	<ul style="list-style-type: none"> <li>Contact tracing expansion</li> <li>Isolation &amp; Quarantine support</li> <li>Encampment response</li> <li>Surveillance</li> <li>LTCF Task Force</li> <li>Equity lens</li> </ul>	<ul style="list-style-type: none"> <li>Procurement and fulfillment through EOC</li> <li>Still significant PPE requests from healthcare partners</li> </ul>



# Homelessness: Outreach and Shelter

- Street Health and Outreach Updates
  - Positive cases in multiple encampment sites but limited numbers
  - Health Care for the Homeless and Public Health conducted case investigation
  - Referred multiple people to Operation Comfort
  - Worked with Oakland and Livermore staff and providers to bring additional hygiene supplies and meals to the sites, encourage distancing
  - Continuing weekly call with providers
- Shelter Updates
  - Positive cases in three shelters to date, no major outbreaks
  - Most have reduced number of guests
  - Health Care for the Homeless distributing masks and thermometers
  - Site visits and weekly calls continue to provide technical assistance
  - Winter shelters closing 6/30



# Homelessness: Project Roomkey

Hotels Leased	City	Max Occupancy	Current Occupancy	%	Occupancy Notes	Target Population	Lease	Shelter Contract
Comfort Inn	Oakland	100	57	57%	Quarantine stay ~ 2 weeks	Homeless/ Covid +	State	Abode Services
Radisson	Oakland	274	246	90%	Moving people back post-water damage. 11 rooms offline longer term.	Homeless/high risk	State	Abode Services
Quality Inn	Oakland	98	32	33%	Reducing occupancy to move to COVID+ target population	Current homeless/ high risk; Future Covid +	County	Abode Services
Marina Village Inn	Alameda	50	4	8%	Scaling up May 8-22	Homeless/high risk women & families	County	Building Futures
<b>Total Operating</b>		<b>522</b>	<b>339</b>	<b>65%</b>				



# Homelessness: Social Health Information Exchange (SHIE) and Community Health Record (CHR)

- Emergency permission gained to expand records viewable in the CHR
- 614,000 consumer records are now viewable in the CHR, if needed for COVID related care coordination
  - Allows secure, legally vetted sharing
  - For hotel residents: housing navigation, Mental health and SUD referrals will be coordinated via the SHIE
  - Doctors screening potential guests for the hotels will have access to the CHR to improve their assessment of guests coming to the hotels
- Adding PHNs and some contact tracing staff as users

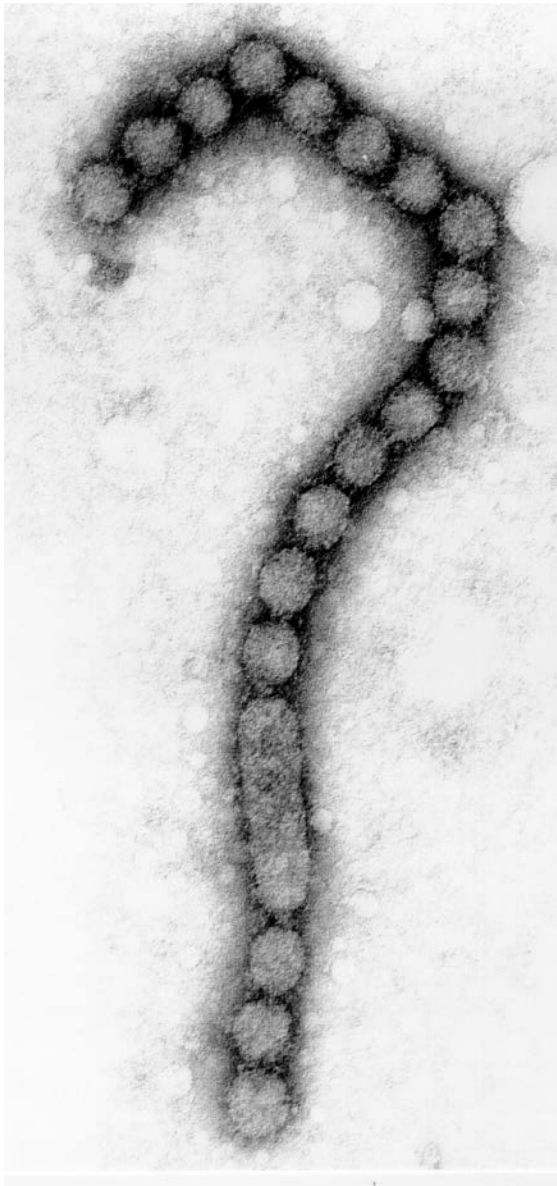


# AHS/County Liaison on COVID-19

- County Liaison Team has made 7 hospital visits so far.
  - All 4 acute campuses
  - Multiple shifts and week day/week ends
  - Total 85 individuals interviewed so far in 22 units/floors
  - Observed conditions/availability of PPE
- Generally hearing from staff that:
  - PPE availability now is adequate, though access is controlled in some units
  - Staff noted “scary start” 3-5 weeks ago with rationing/reuse pro and some things running out and inadequate training
  - Concerns expressed about the tone of communications between Administration and staff
- Site visits ongoing through end of May







**CORONAVIRUS UPDATES**  
Get the latest news from our Public Health Department

**INTERACTIVE MAP**  
**COVID-19 Food Distribution & Services MAP**  
The Alameda County Emergency Operations Center (EOC) Care & Shelter Branch in close coordination with Alameda County Community Food Bank, 211, and cities developed a countywide interactive map that includes food distribution sites and other essential services which are currently open under the COVID-19 Shelter-In-Place Order. The map will be updated regularly and remain active for the duration of the Shelter-In-Place Order.  
[Open Interactive Map](#)

**DONATIONS**  
**Help Us Fight COVID-19**  
Our Board of Supervisors has reactivated the Disaster Relief Fund. Due to the enormous and varied needs facing the community and the health care systems at this time, the county has established two separate funds. The Emergency Fund will provide needed services to those directly affected by the pandemic. The Recovery Fund will be used to purchase personal protective equipment and other supplies to assist those fighting the pandemic. You can also donate personal protective equipment.  
[Learn More / Donate](#)

**Get Email Updates**

**Thank you to our...**  
**health care workers, first responders,**

**PUBLIC SAFETY**  
**Face Coverings Now Required**  
Our Health Officer Dr. Erica Pan has issued an Order for all members of the public to wear face coverings when around people outside of their household. Face coverings can be simple and homemade, made of cloth, fabric, or other soft or permeable material without holes, that covers the

**ACPHD COVID-19 webpage: [acphd.org/2019-ncov](https://acphd.org/2019-ncov)**

Email questions to: [nCov@acgov.org](mailto:nCov@acgov.org)