



CORONAVIRUS UPDATES

Get the latest news from our Public Health Department

COVID-19 (Novel Coronavirus) Update

Board of Supervisors
April 28, 2020

Colleen Chawla, Director
Health Care Services Agency



Bay Area

7,634
cases

59 on April 27

264
deaths

3 on April 27

California

44,919
cases

1,171 on April 27

1,774
deaths

56 on April 27

United States

987,022
cases

27,631 on April 26

56,144
deaths

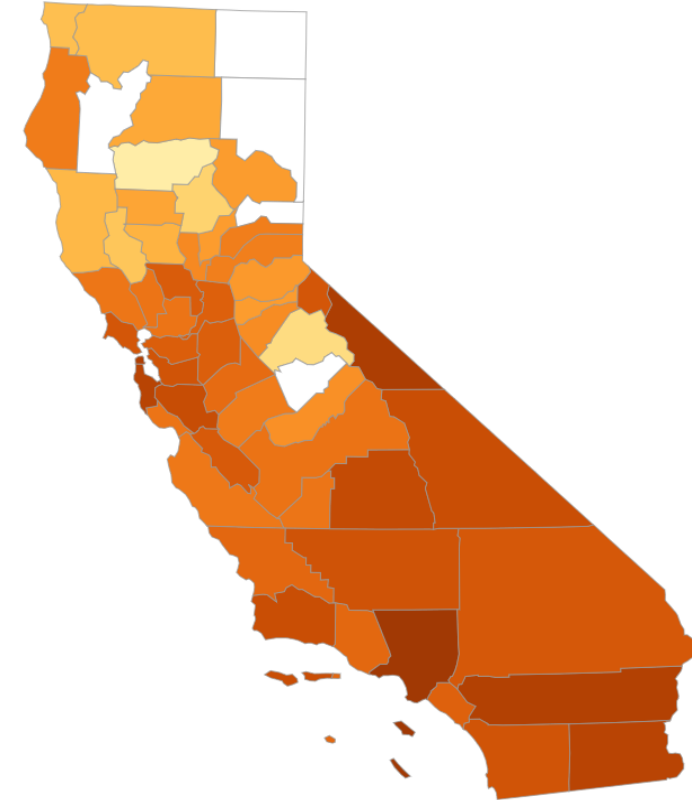
1,126 on April 26

Coronavirus Tracker

The Chronicle is mapping every reported coronavirus case in the Bay Area, California and the U.S. We are tallying the number of tests reported, new confirmed cases, hospitalizations and deaths reported across the state by day.

By [CHRONICLE DIGITAL TEAM](#) | LAST UPDATED: April 27, 2020 3:12 p.m.

California cases are organized by reporting county. Cases are based on reports from the U.S. Centers for Disease Control and Prevention, the California Department of Public Health and county public health departments, plus exclusive Chronicle reporting. For more information on the data, please [read about our methodology](#).



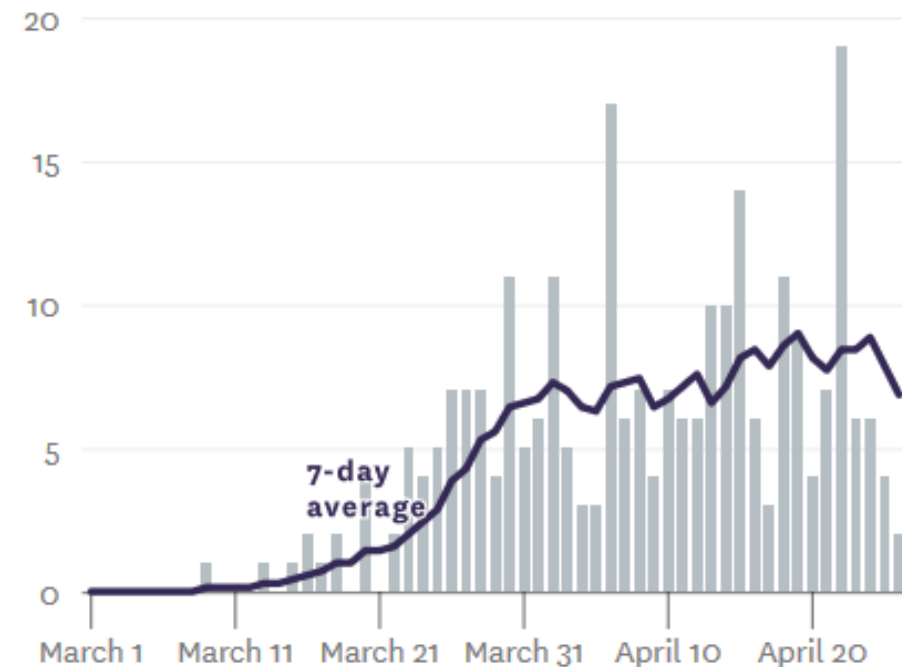
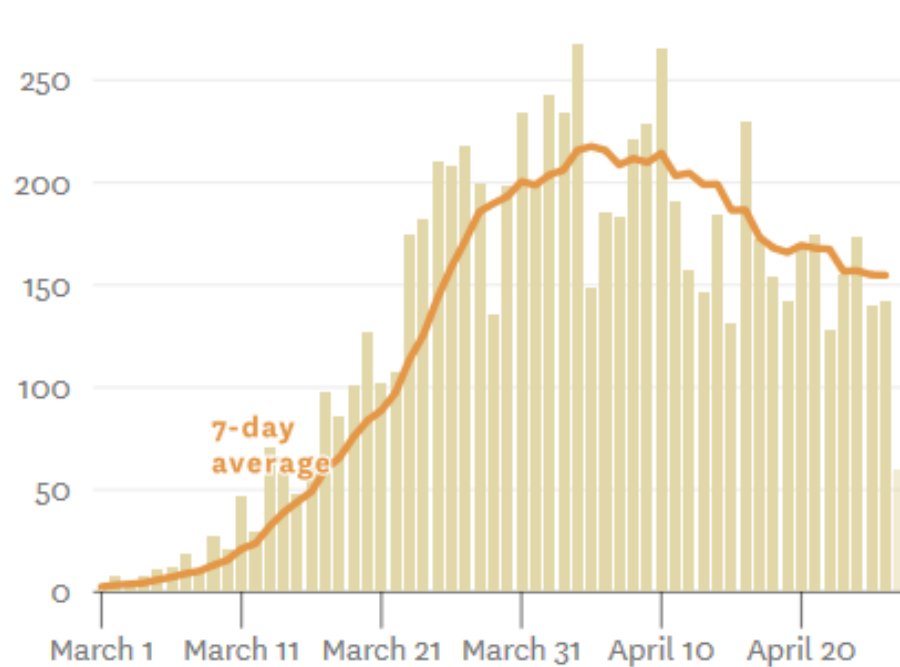
Cases per 100,000 people

0 7.8 64.3 500+



As of 4/27/20

New reported cases and deaths in the Bay Area, by day





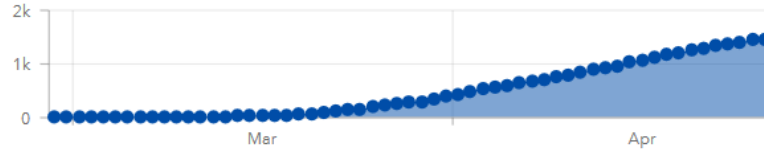
Alameda County COVID-19 Dashboard Updated 4/27/2020 with data through the end of 4/26/2020

Alameda County LHI

1,451
Cases

51
Deaths

Alameda County LHI Cumulative Cases



Using date created in CalREDIE

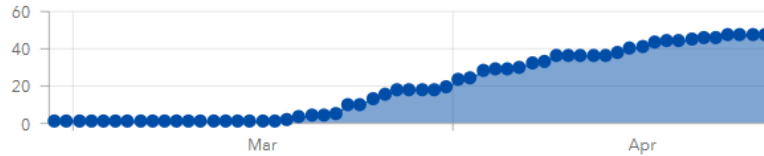
Cumulative Daily

Berkeley LHI

47
Cases

1
Deaths

Berkeley LHI Cumulative Cases



Using date created in CalREDIE

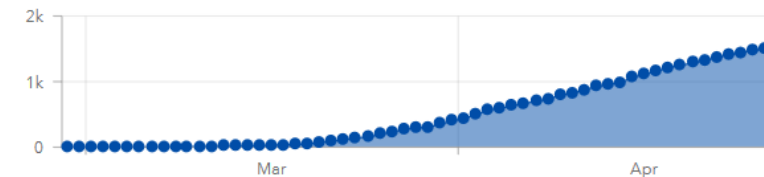
Cumulative Daily

Alameda County Total

1,498
Cases

52
Deaths

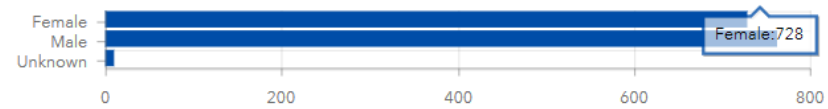
Alameda County Total Cumulative Cases



Using date created in CalREDIE

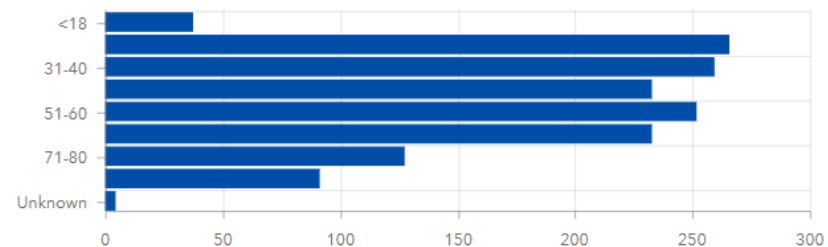
Cumulative Daily

Alameda County Cases by Sex



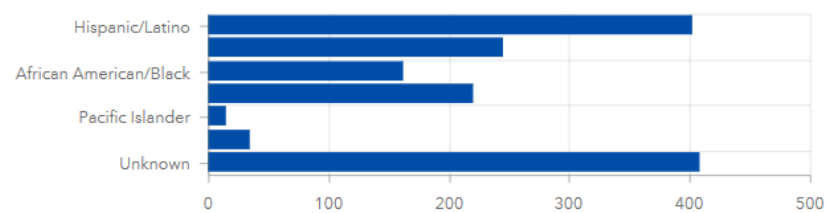
Cases Case Rates

Alameda County Cases by Age Group



Cases Case Rates

Alameda County Cases by Race/Ethnicity



Native American and Multirace each have less than ten cases and so are suppressed.

Cases Case Rates

[Click here to go to our second dashboard with data on deaths by race/ethnicity, hospitalizations, and cases and case rates by zip code](#)

Alameda County Cases by City/Jurisdiction

Alameda County: 1498

Berkeley LHI: 47

Alameda County LHI: 1451

Under Investigation: 8

Known Homeless: <10

No Address (May Be Homeless): 18

Santa Rita Jail*: 34

Alameda: 35

Albany: <10

Dublin: 24

Emeryville: <10

Fremont: 98

Hayward: 292

Livermore: 35

Newark: 54

Oakland: 430

Piedmont: 10

Pleasanton: 52

Cases Case Rates

Note that, through review and as in the notes at the bottom of the dashboard, case information has

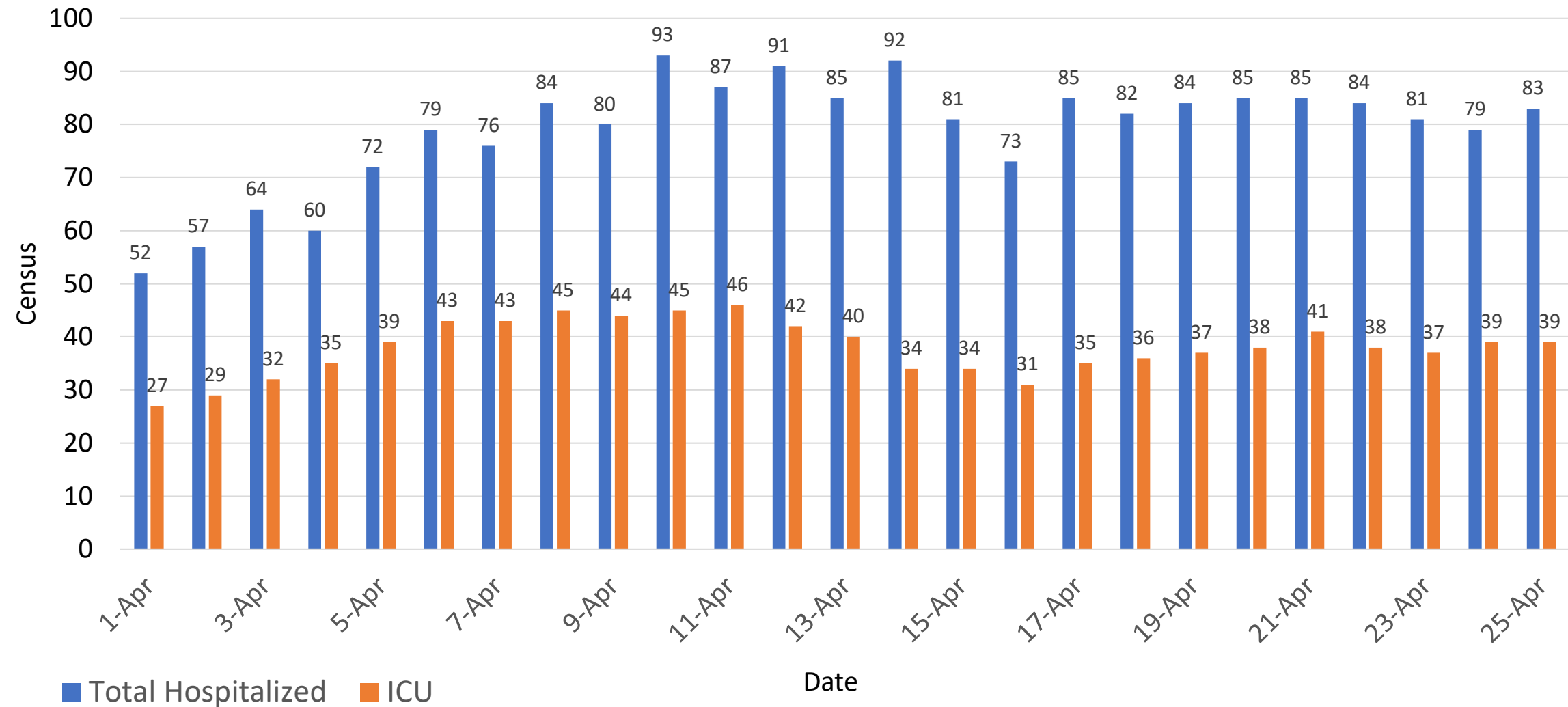


Alameda County
Health Care Services Agency



Alameda County Public Health Department
Celebrating Healthy People in Healthy Communities

COVID-19 positive patients hospitalized in Alameda County, April 2020



Source: https://data.chhs.ca.gov/dataset/california-covid-19-hospital-data-and-case-statistics/resource/6cd8d424-dfaa-4bdd-9410-a3d656e1176e?inner_span=True

Outbreaks & Response

Outbreaks

- Multiple congregate living facility Outbreaks
- Monitoring SNFS with EMS cluster alerts
- Santa Rita Jail
 - 33 cases
- Homeless cases

Long-Term Care Facility Task Force

- Focus on
 - Outbreak and Infection Control
 - Outreach & Prevention
 - PPE
- Partnering with CA Dept of Public Health, Alameda-Contra Costa Medical Association, Hospitals, CA Association of Health Facilities
- Pivoting hospital surge planning to Long-Term Care Facilities



Testing Updates

- Long term goals:
 - All symptomatic person
 - Community surveillance
- Testing Task Force

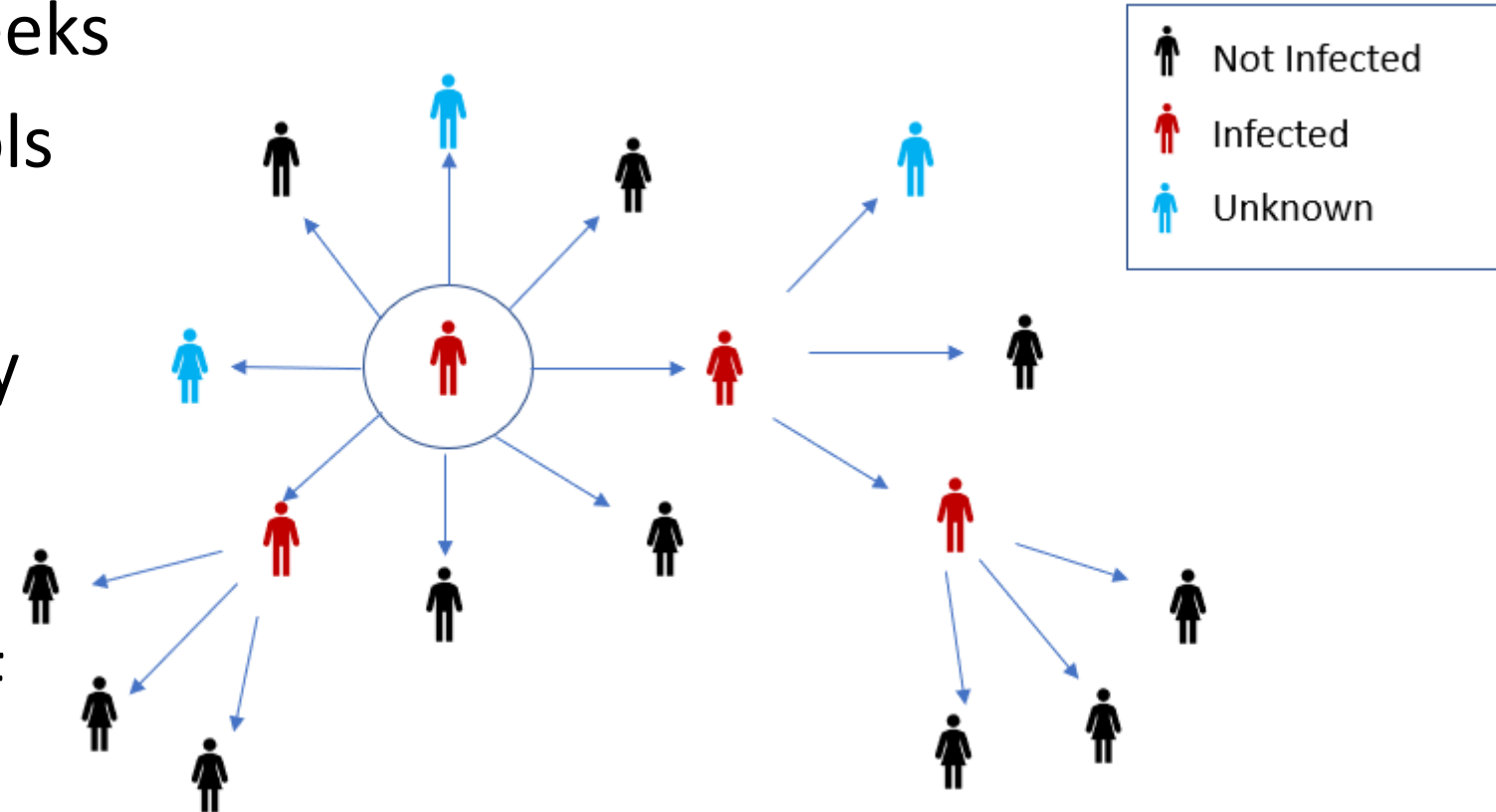


- Public Health testing priorities:
 - Staff/residents of residential care facilities
 - Health care personnel/medical first responders/essential infrastructure workers with sx
 - Other congregate living settings
 - Outbreak investigations
 - Homeless
 - High-risk contacts
 - Hospitalized & critically ill
 - Deaths
- Public Health Lab Testing Capacity
 - Up to 94/day, 7d/week
 - Surge can be sent to UCSF CZ Biohub



Alameda County's Covid-19 Contact Tracing

- Scaled up over past few weeks
- Consistent training protocols
- Ensuring patient privacy
- Exploring use of technology
- Could need ~300 people at COVID peak
- Collaborating with SF/UCSF



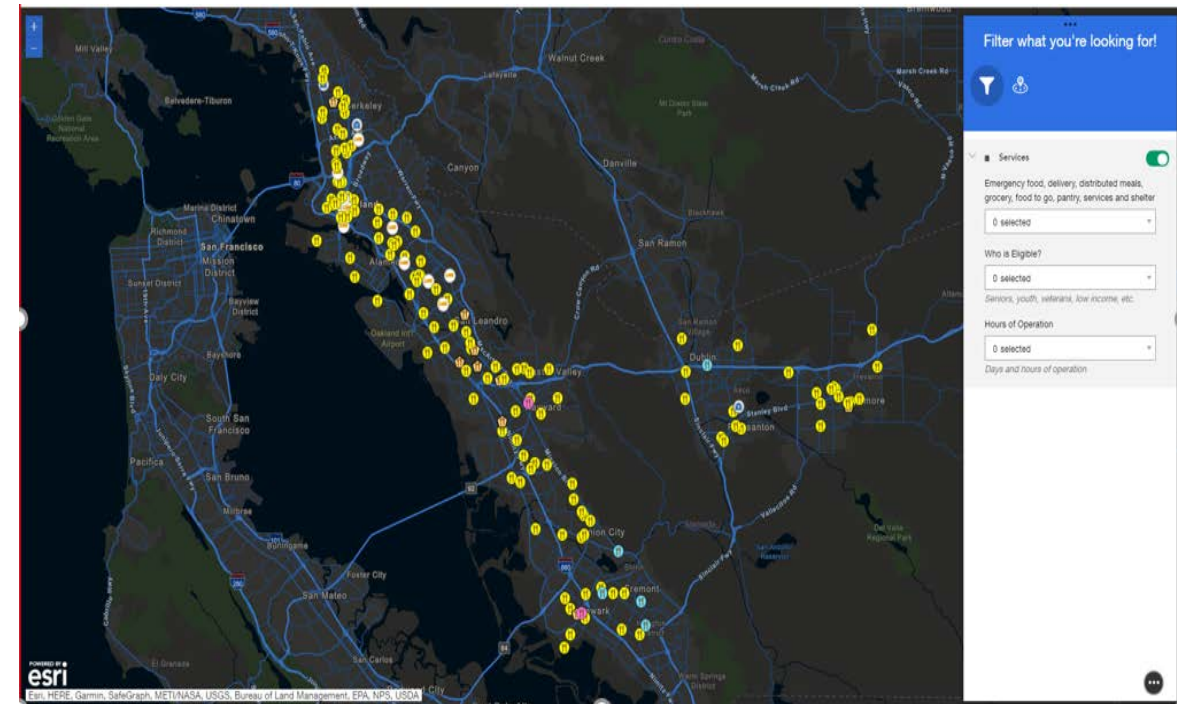
Homelessness: Hotel Project

- State Leased Sites Update
 - Operation Comfort COVID+/Presumptive has 82 guests
 - Isolation/Quarantine site
 - Nearing capacity (100)
 - Safer Ground for High Risk has 271 households
 - Working with guests to improve physical distancing
 - Behavioral health and substance use services on site
 - Nearing capacity (285)
- Planned Leases
 - North County – 211 units
 - Mid County – 51 units
 - Units for High Risk and COVID+/Presumptive
 - South and East County sites under negotiation



Emergency Food & Resources Map

- **OUSD:** food kitchen & packing site only;
Monday – Friday from 8:00am - 3:30pm
- **Alameda County Food Bank/Arena Center:**
Monday/Wednesday/Friday from 9:00am - 3:30pm (as of 4/27: 7,900 households; 4,494 emergency boxes; 112,000 lbs. of mixed produce).
- **REACH:** Wednesdays only from 11:00am – 12:30pm (400+bags of food; serving 195 households; 942 individuals)
- **All In/Dig Deep Farms:** Fridays only from 1:00pm – 3:00pm (900+ bags of food)



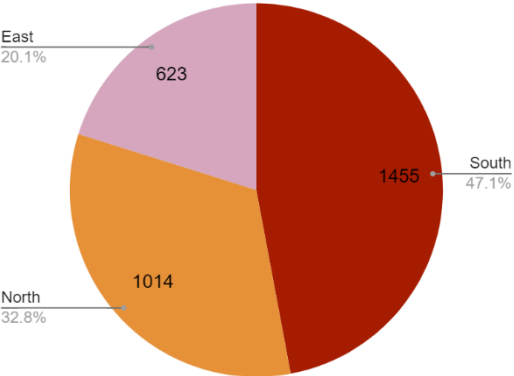
[Emergency Food & Resource Map](#), includes approx. **200+** Food distribution and other resources identified countywide.

Emergency Child Care Response Team

SUPPLY

Setting	Number of Sites	Back-Up Care Capacity	
		Overall Capacity	Infant Capacity
FCC	185	1045	293
Centers	54	1250	340
Total	239	2295	633

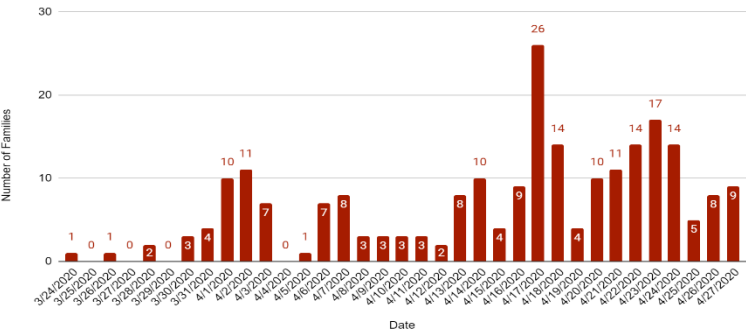
EBU Child Care Capacity by Region



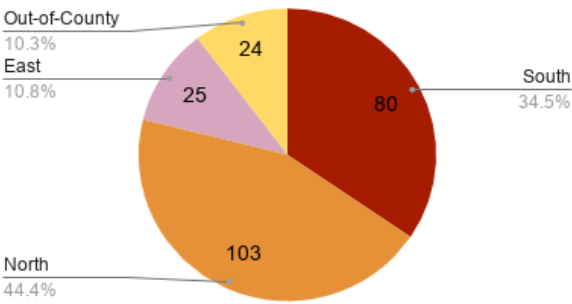
DEMAND



Number of Daily Requests

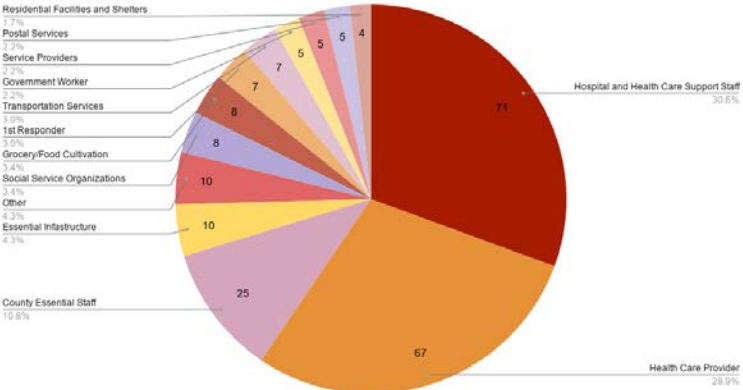


Family Residence by Region



12 Families Placed in Care; 118 with Families with Referrals for Child Care

Family Occupation

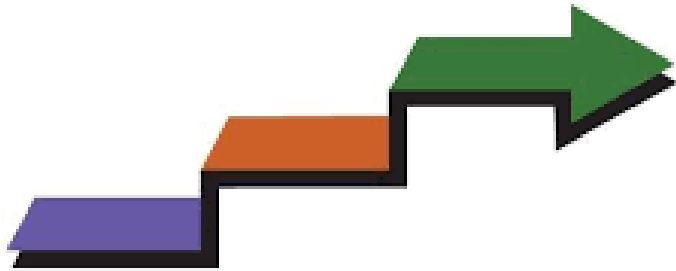


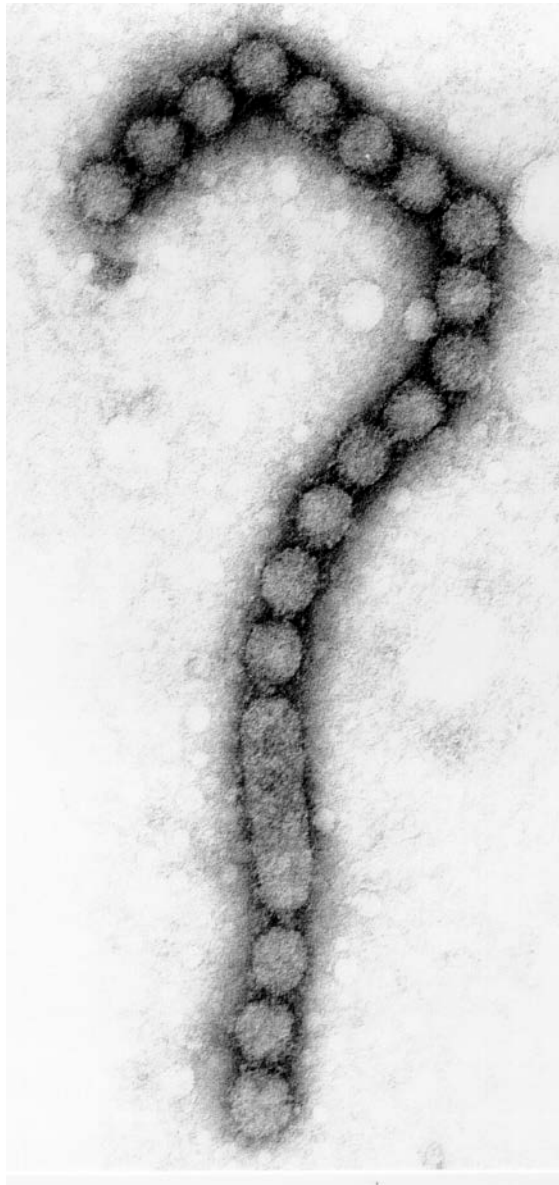
Need by Family Occupation

- 60% Represent Health Care Workers
- 11% Represent County Essential Staff

Strategies to Contain & Planning for Next Steps

- Regional indicators for “loosening” mitigation & physical distancing
- Phased approach
- Triggers for resuming mitigation
 - Hospitalizations flat or decreasing
 - Ensure adequate healthcare capacity and PPE supply
 - Increase Testing Capacity
 - Increase Surveillance network & Testing Strategy
 - Increase Capacity to investigate cases & contacts and provide Isolate & Quarantine





CORONAVIRUS UPDATES

Get the latest news from our Public Health Department

INTERACTIVE MAP

COVID-19 Food Distribution & Services MAP

The Alameda County Emergency Operations Center (EOC) Care & Shelter Branch in close coordination with Alameda County Community Food Bank, 211, and cities developed a countywide interactive map that includes food distribution sites and other essential services which are currently open under the COVID-19 Shelter-In-Place Order. The map will be updated regularly and remain active for the duration of the Shelter-In-Place Order.

[Open Interactive Map](#)

DONATIONS

Help Us Fight COVID-19

Our Board of Supervisors has reactivated the Disaster Relief Fund. Due to the enormous and varied needs facing the community and the health care systems at this time, the county has established two separate funds. The Emergency Fund will provide needed services to those directly affected by the pandemic. The Recovery Fund will be used to purchase personal protective equipment and other supplies to assist those fighting the pandemic. You can also donate personal protective equipment.

[Learn More / Donate](#)

Thank you to our...

health care workers,
first responders,

PUBLIC SAFETY

Face Coverings Now Required

Our Health Officer Dr. Erica Pan has issued an Order for all members of the public to wear face coverings when around people outside of their household. Face coverings can be simple and homemade, made of cloth, fabric, or other soft or permeable material without holes, that covers the

Get Email Updates

ACPHD COVID-19 webpage: acphd.org/2019-ncov

Email questions to: nCov@acgov.org