

# Alameda County Board of Supervisors Health Committee

## COVID-19 Update

Alameda County Health Care Services Agency

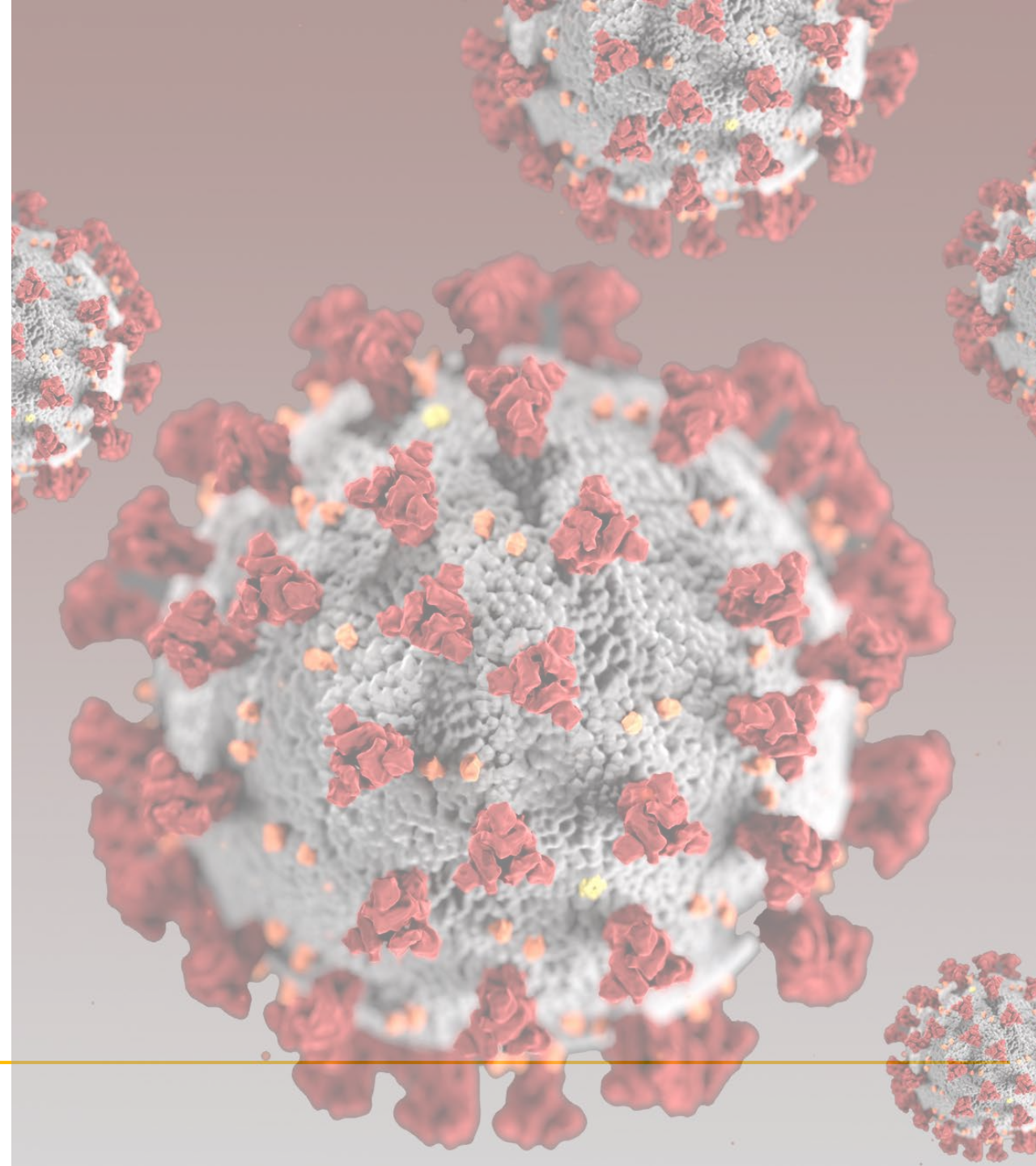
November 9, 2020



Alameda County  
Health Care Services Agency



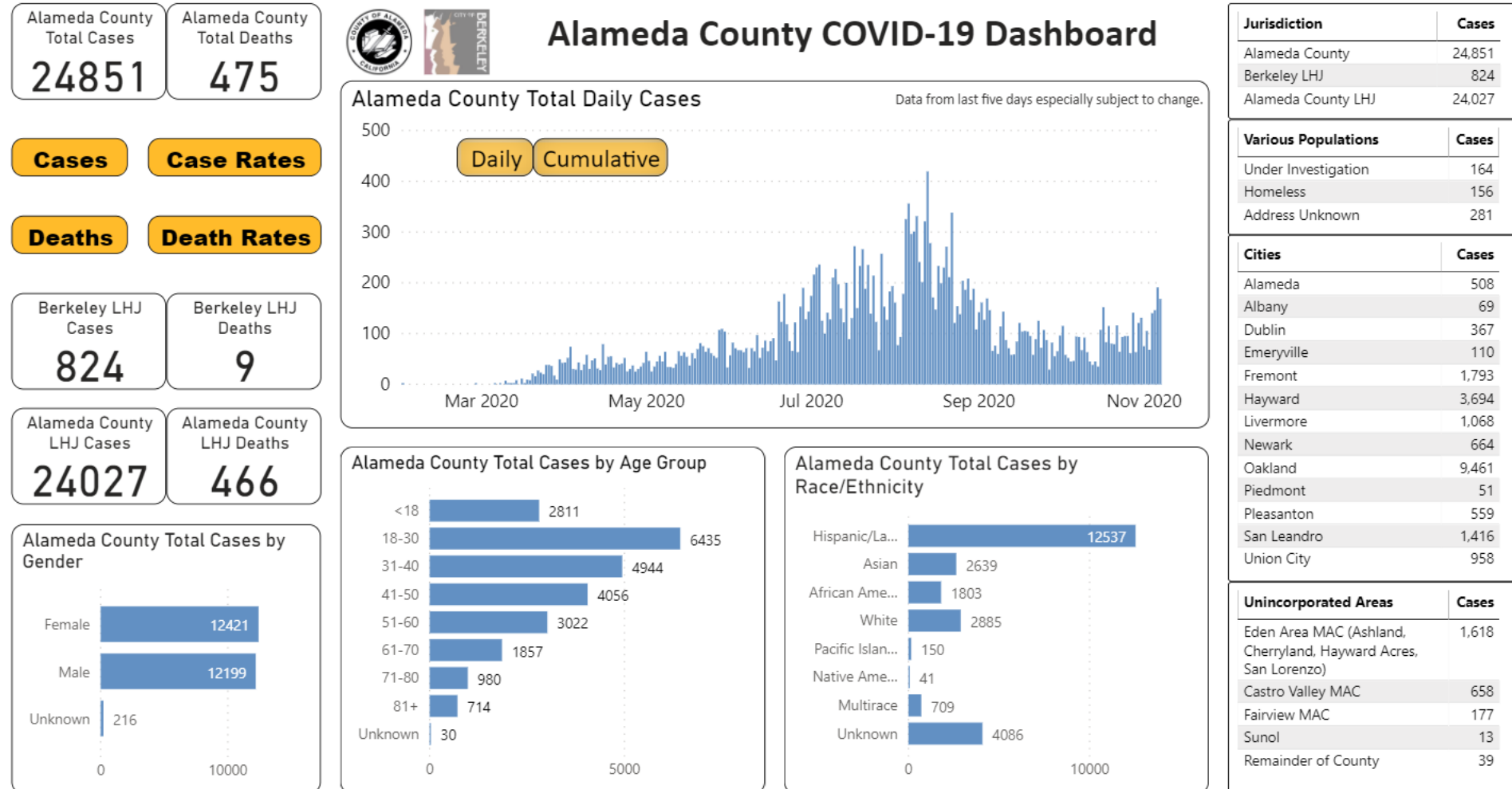
Alameda County Public Health Department  
Celebrating Healthy People in Healthy Communities



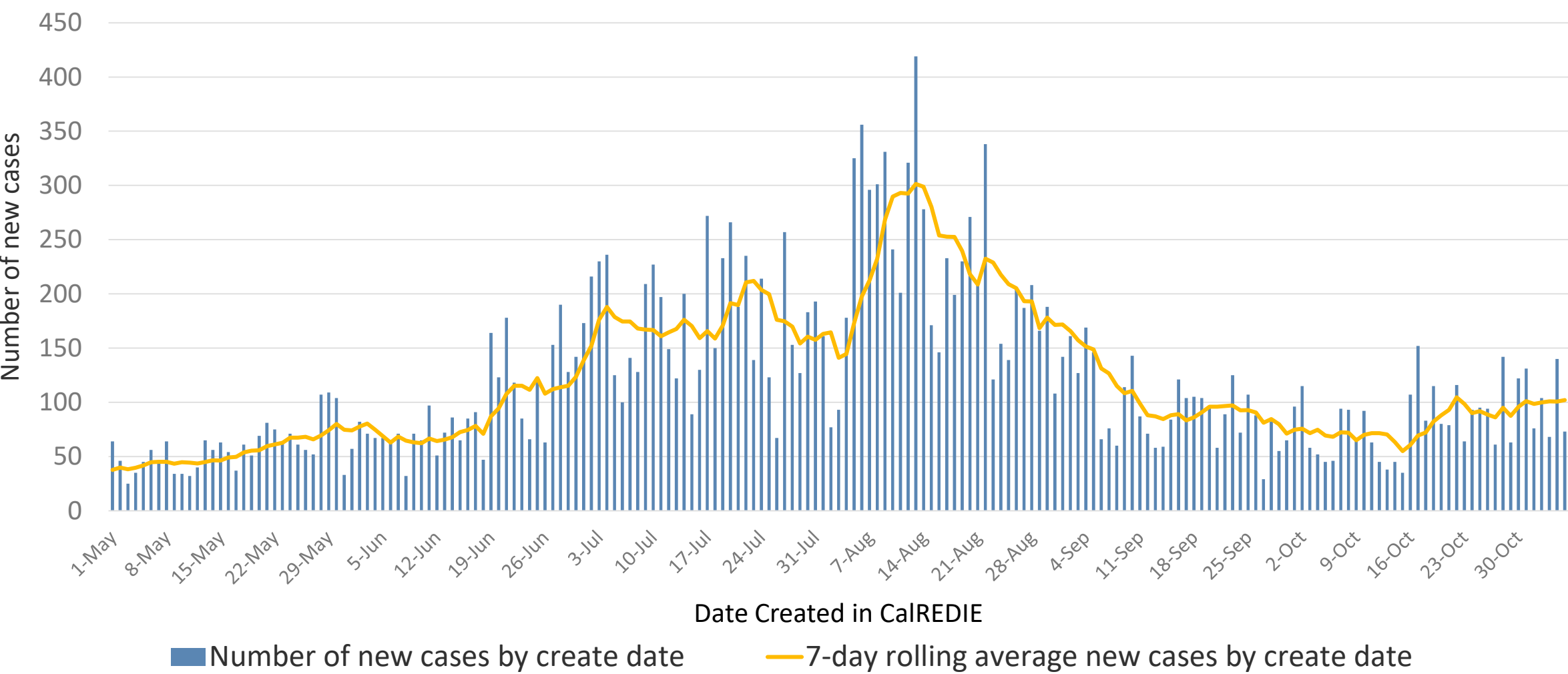
# Local COVID-19 Data

# CASES & DEATHS

By Gender, Race/Ethnicity, Age Group, Jurisdiction, and Over Time [Mobile version](#)



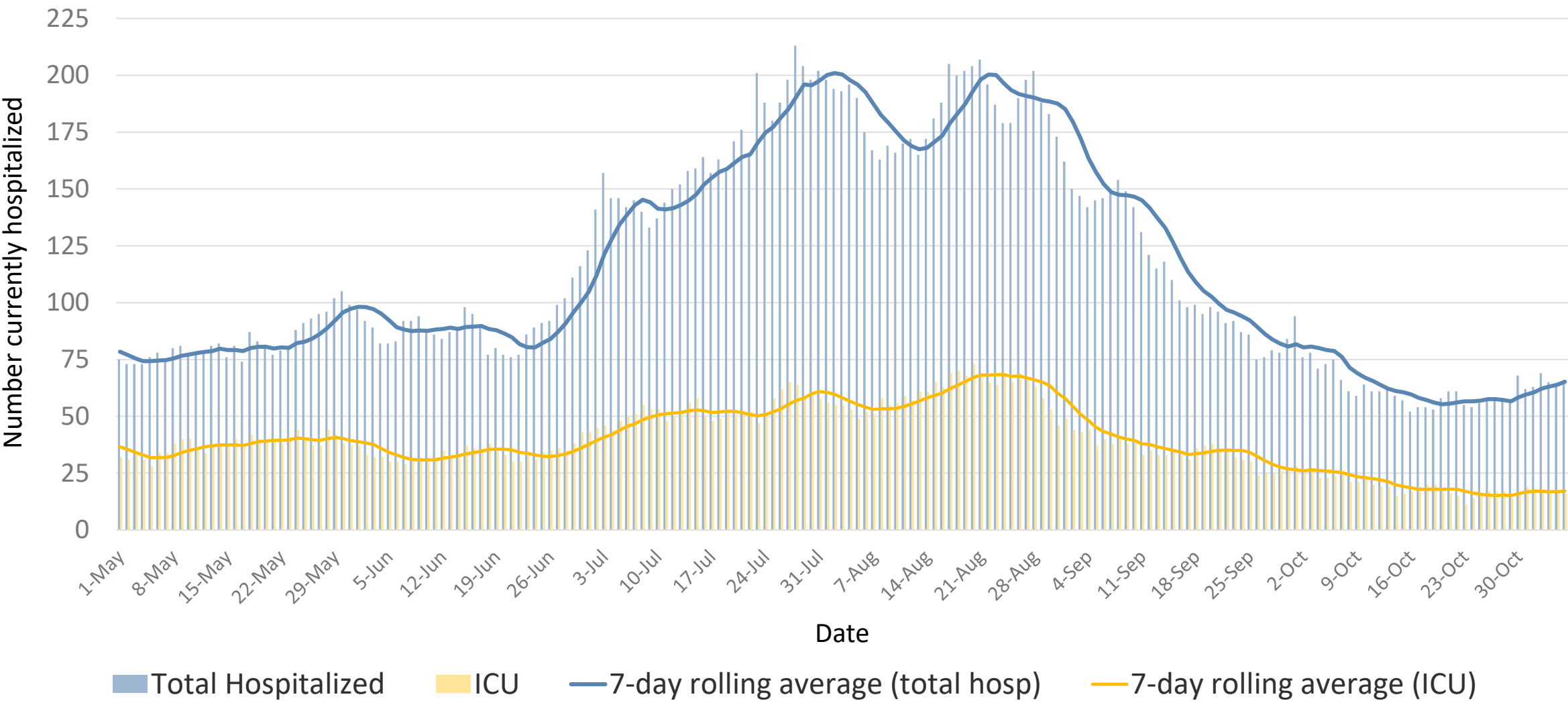
# New Alameda County COVID-19 Cases, 2020



Includes City of Berkeley

Source: CalREDIE Data Distribution Portal download November 6, 2020 10:45 am.

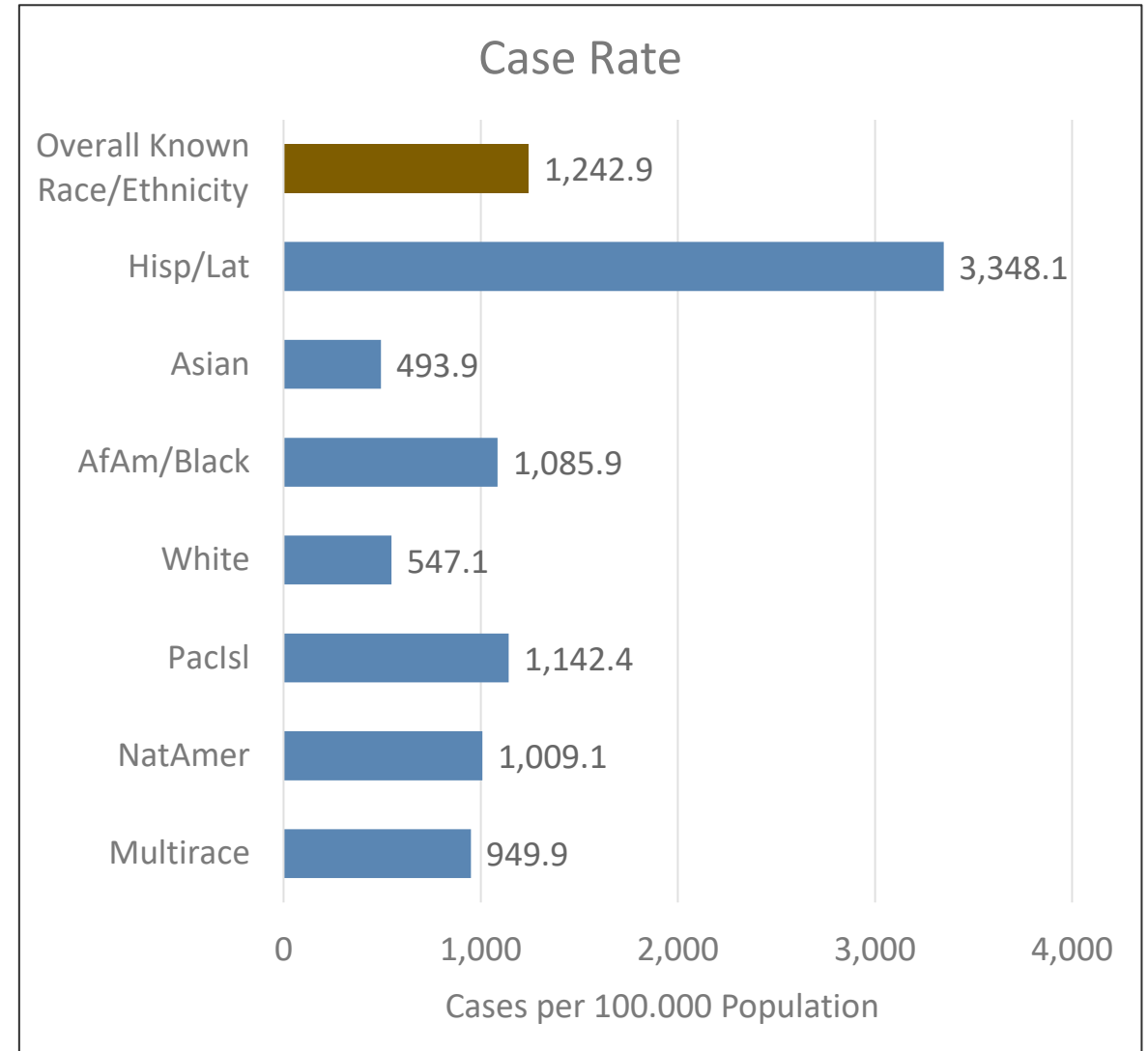
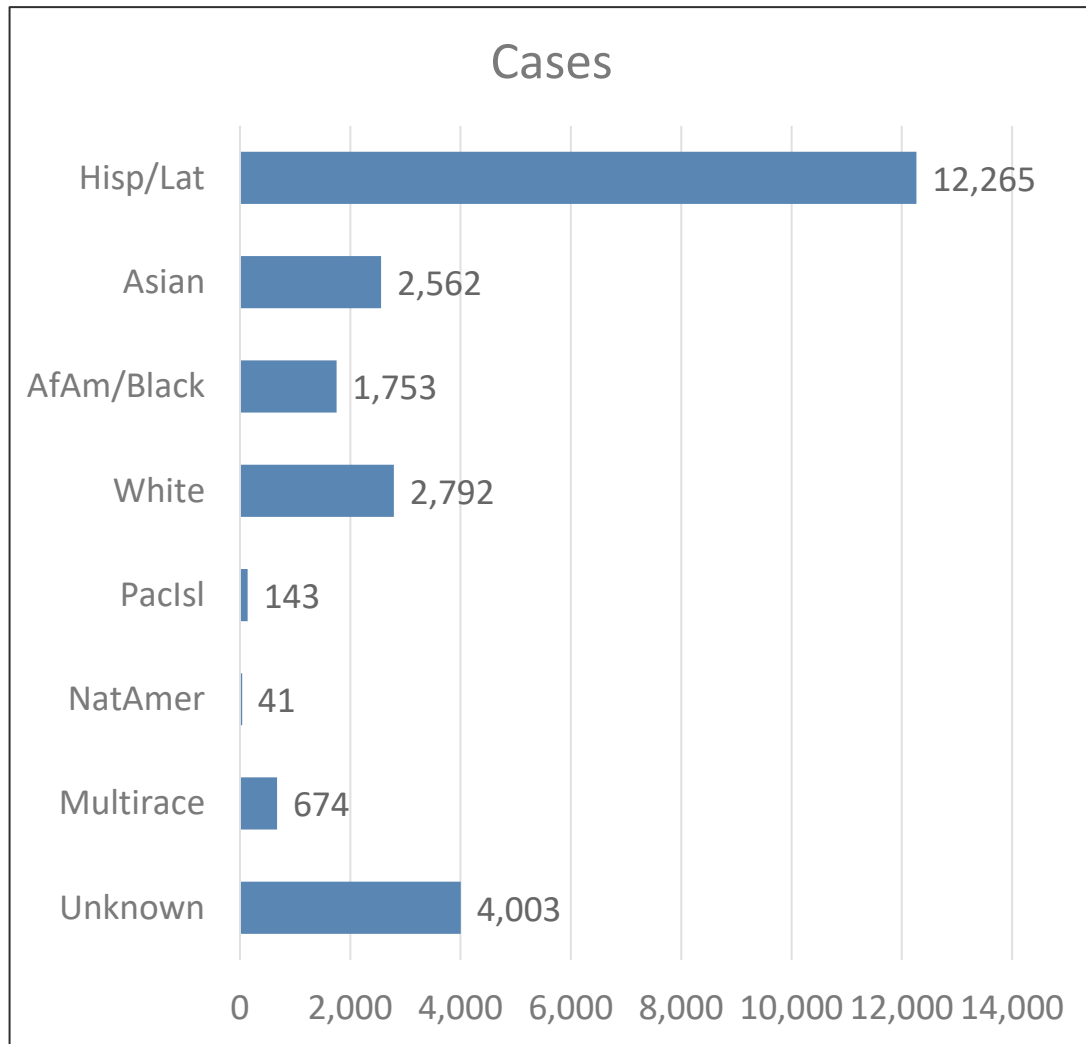
# COVID-19 Patients Currently Hospitalized in Alameda County, 2020



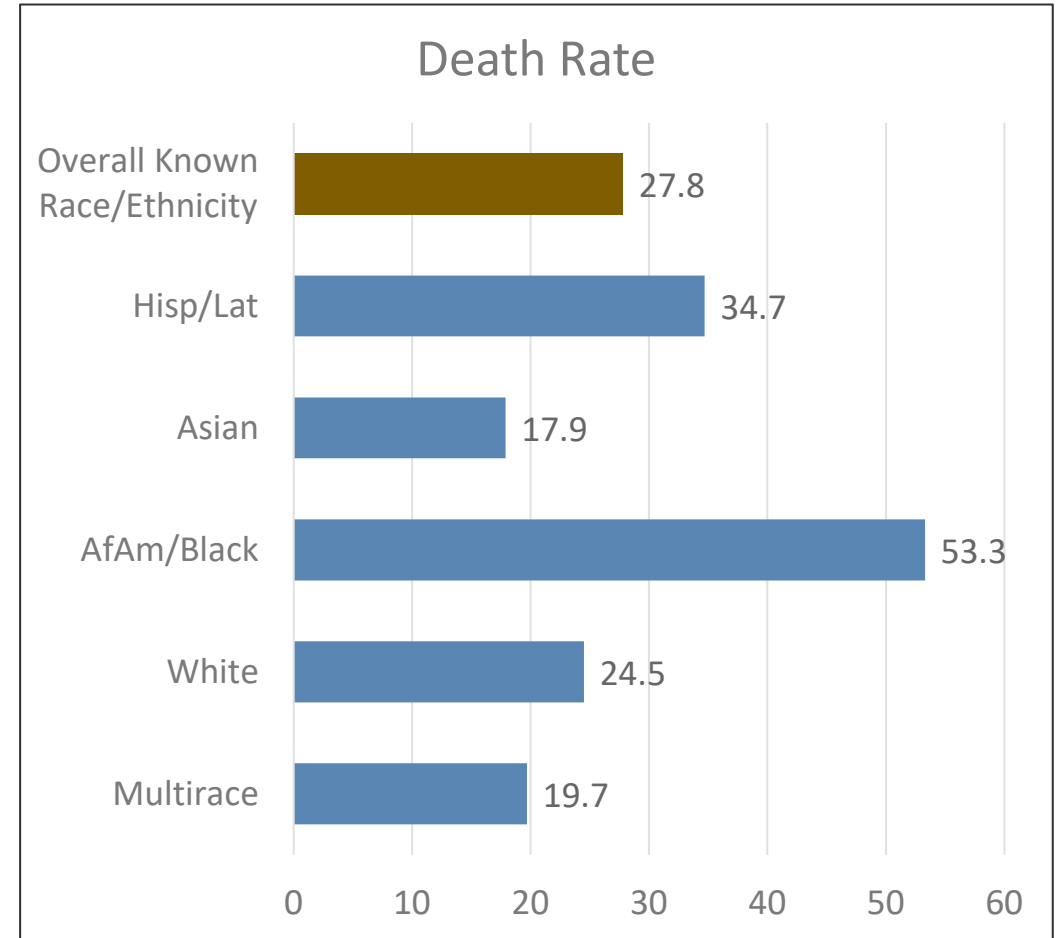
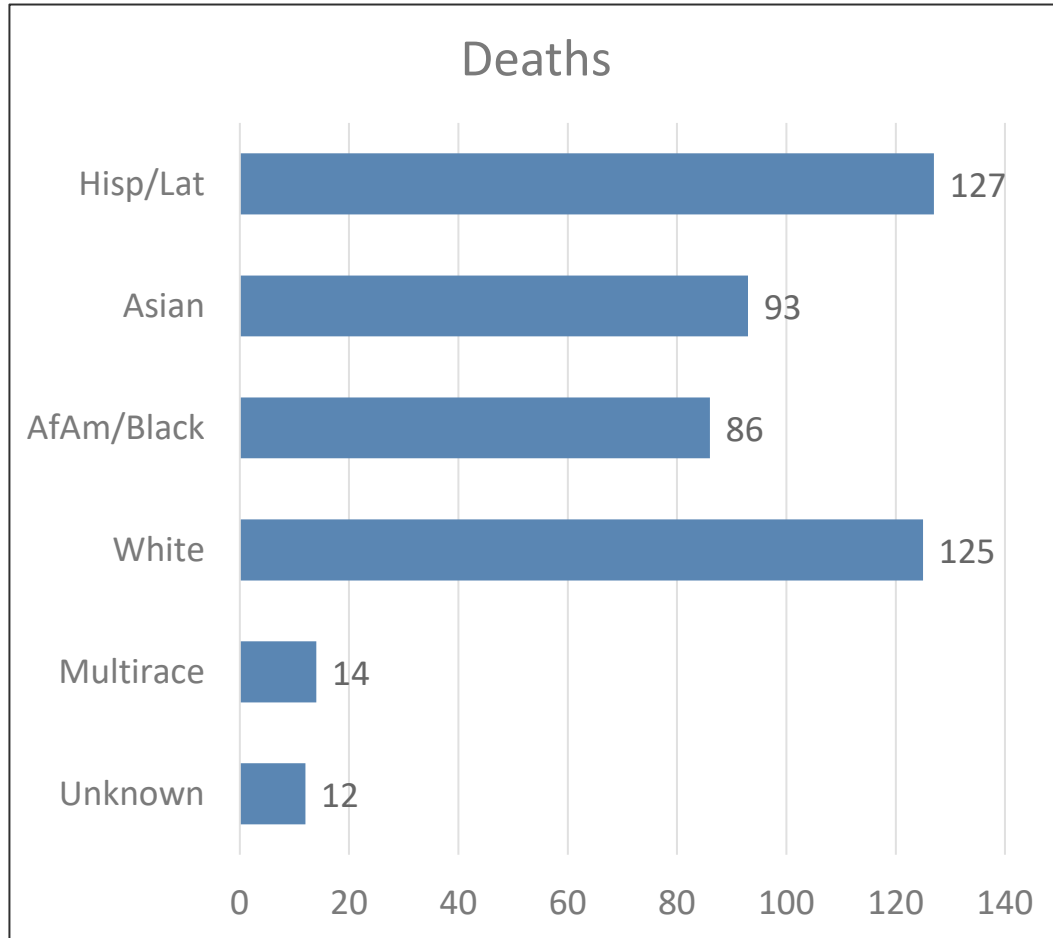
Source: California Department of Public Health

# COVID-19 Disparities Update

# COVID-19 Cases by Race Ethnicity in Alameda County



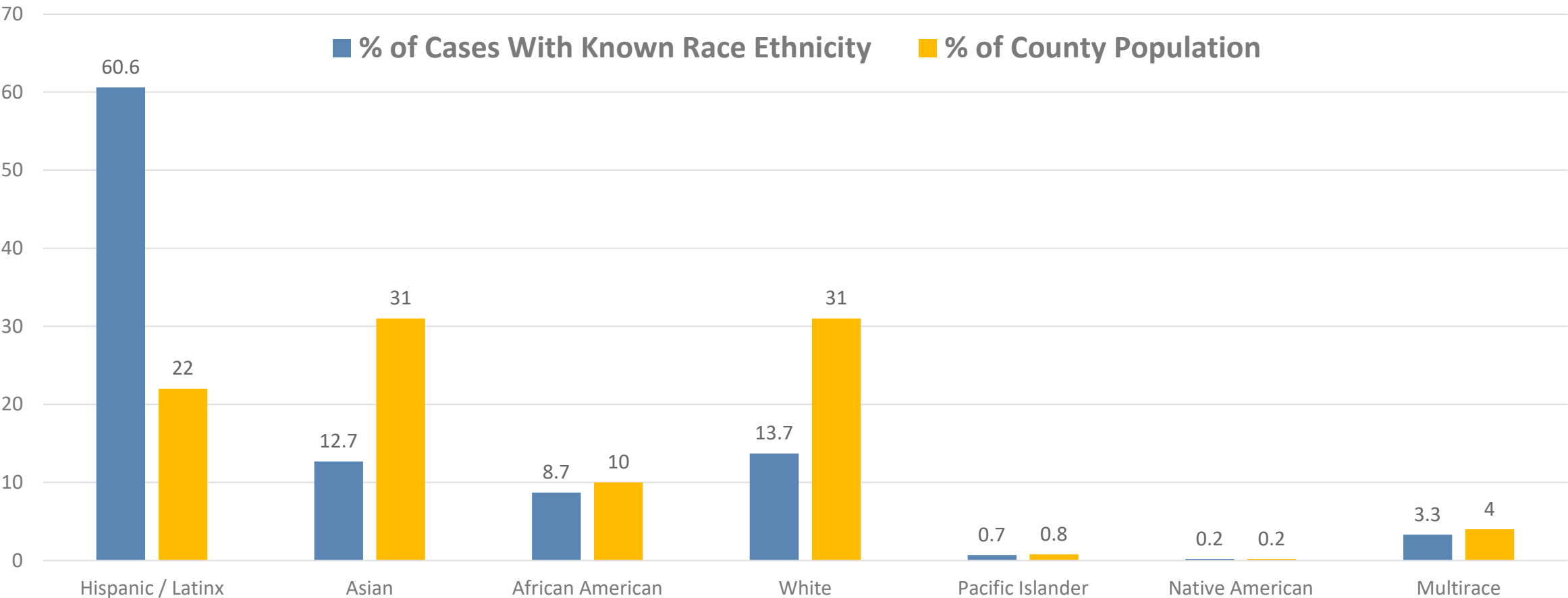
# COVID-19 Deaths by Race Ethnicity in Alameda County





# Racial Inequities in Alameda County

## Share of COVID-19 Cases by Race/Ethnicity vs. Share of the County Population

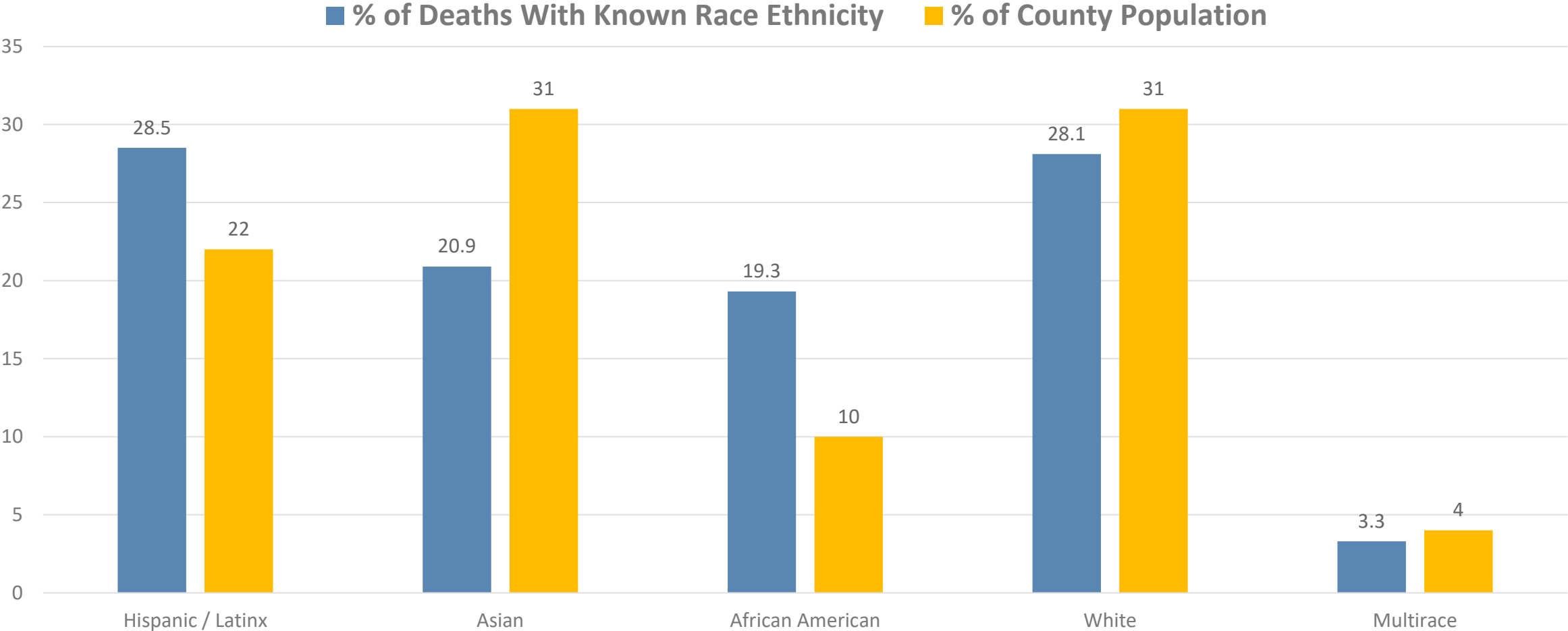


Source: ACPHD, with data from CalREDIE as of 11.4.20



# Racial Inequities in Alameda County

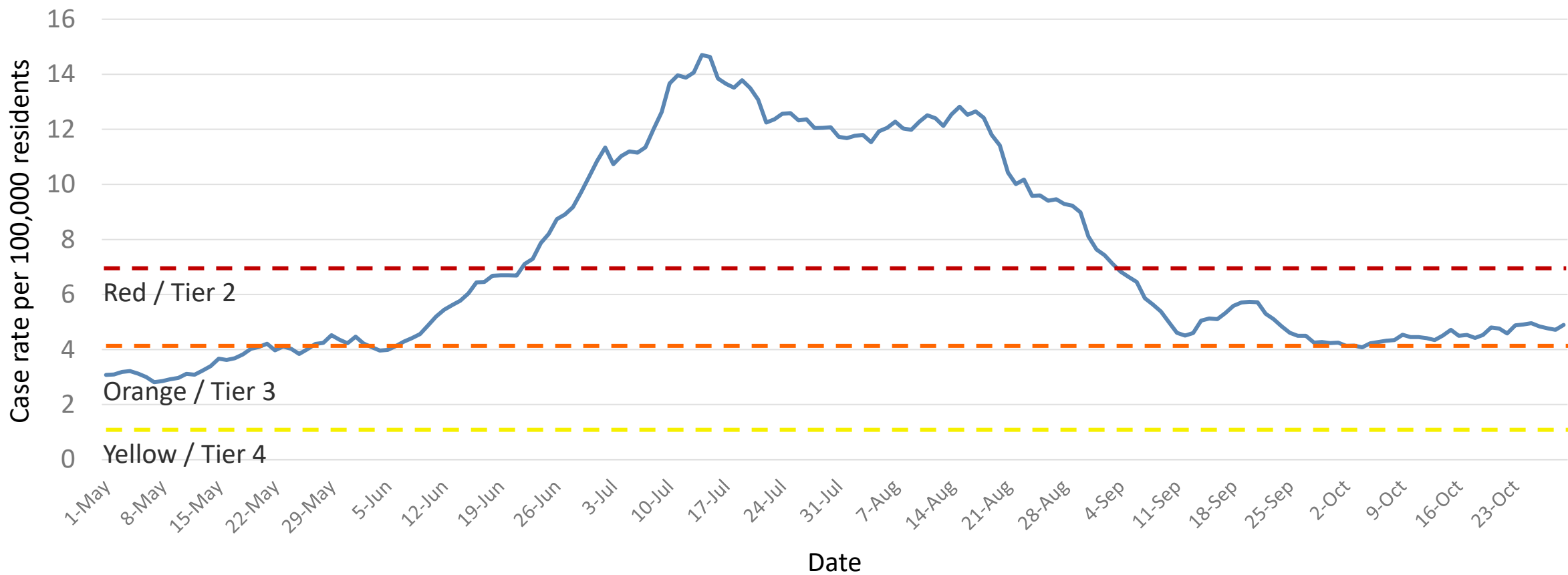
## Share of COVID-19 Deaths by Race/Ethnicity vs. Share of the County Population



Source: ACPHD, with data from CalREDIE as of 11.4.20



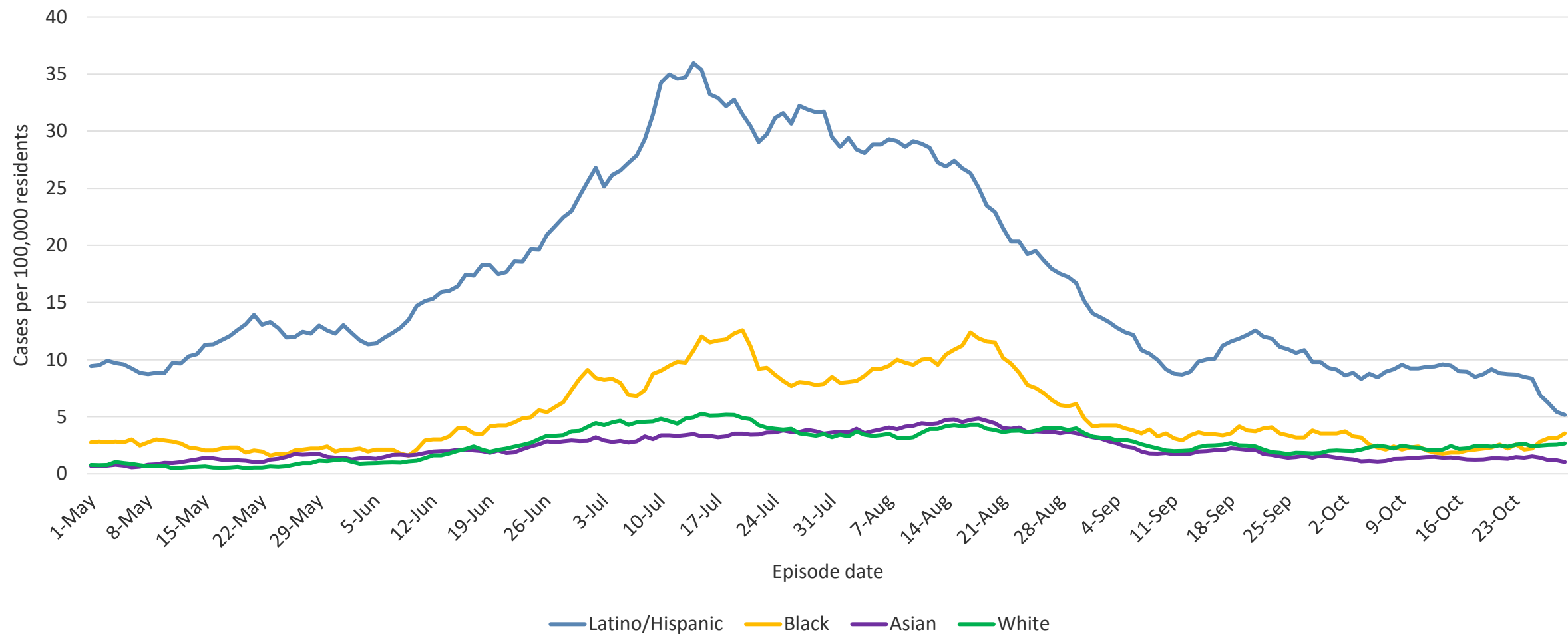
# Alameda County COVID-19 Daily Case Rate, 2020



— New cases per 100,000 per day, 7-day average, by episode date

Includes City of Berkeley  
Source: CalREDIE Data Distribution Portal download November 6, 2020 10:45 am.

# Alameda County COVID-19 daily case rates, 7-day rolling average, 2020

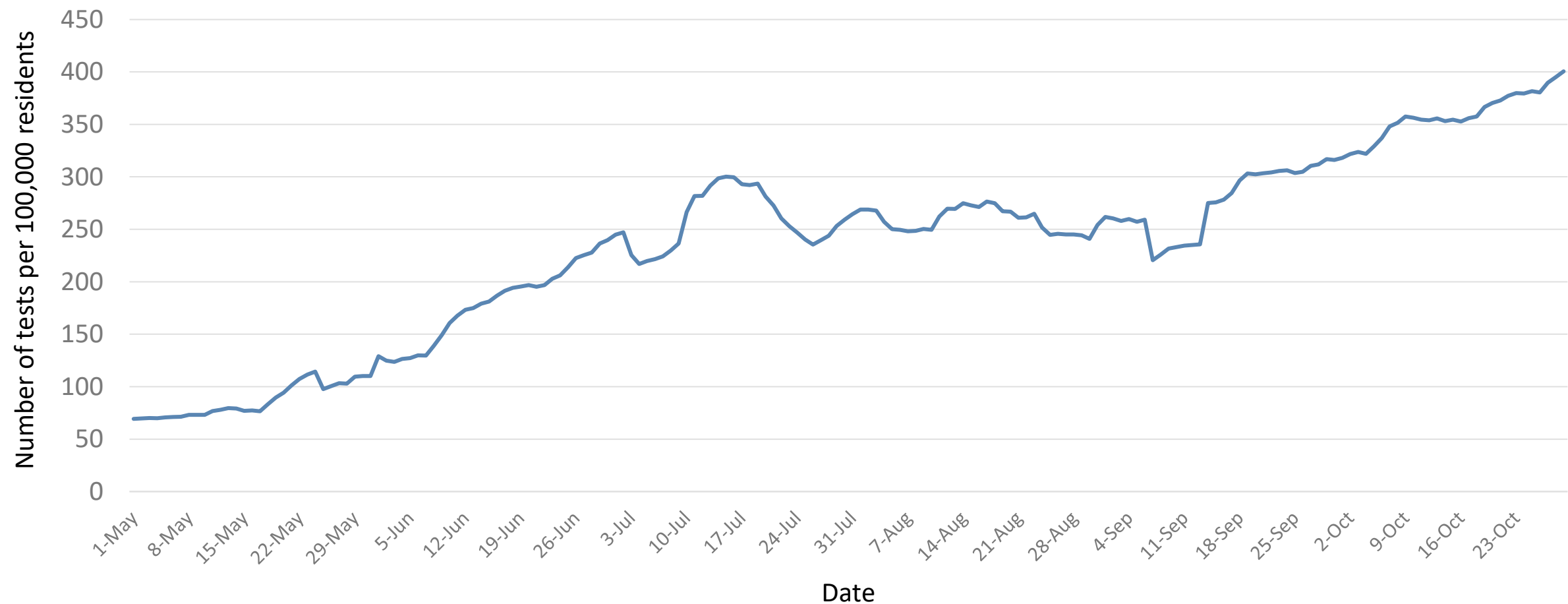


Includes City of Berkeley

Source: CalREDIE Data Distribution Portal download November 6, 2020 10:45 am.



# Alameda County COVID-19 Testing, 2020



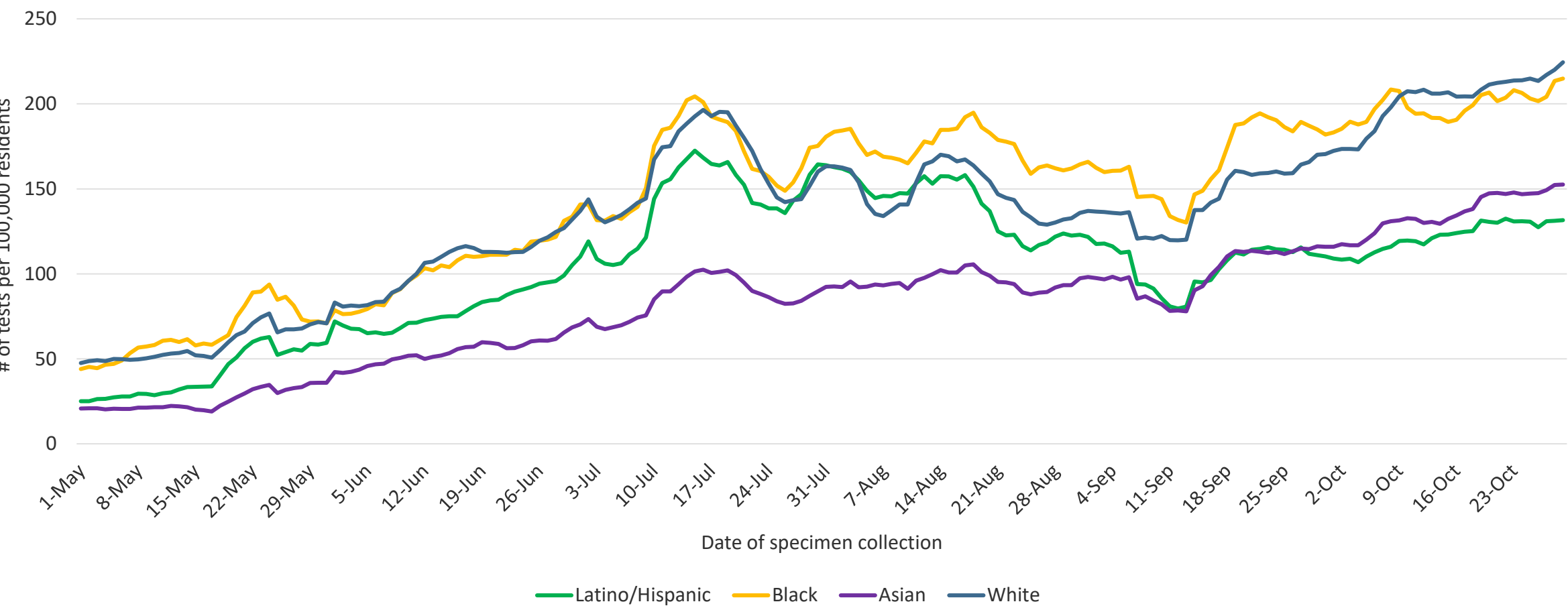
— 7-day rolling average # of tests per day per 100,000 residents, by specimen collection date

Includes City of Berkeley

Sources: 1) CalREDIE Data Distribution Portal download November 6, 2020 10:45 am. 2) Avellino master spreadsheet.



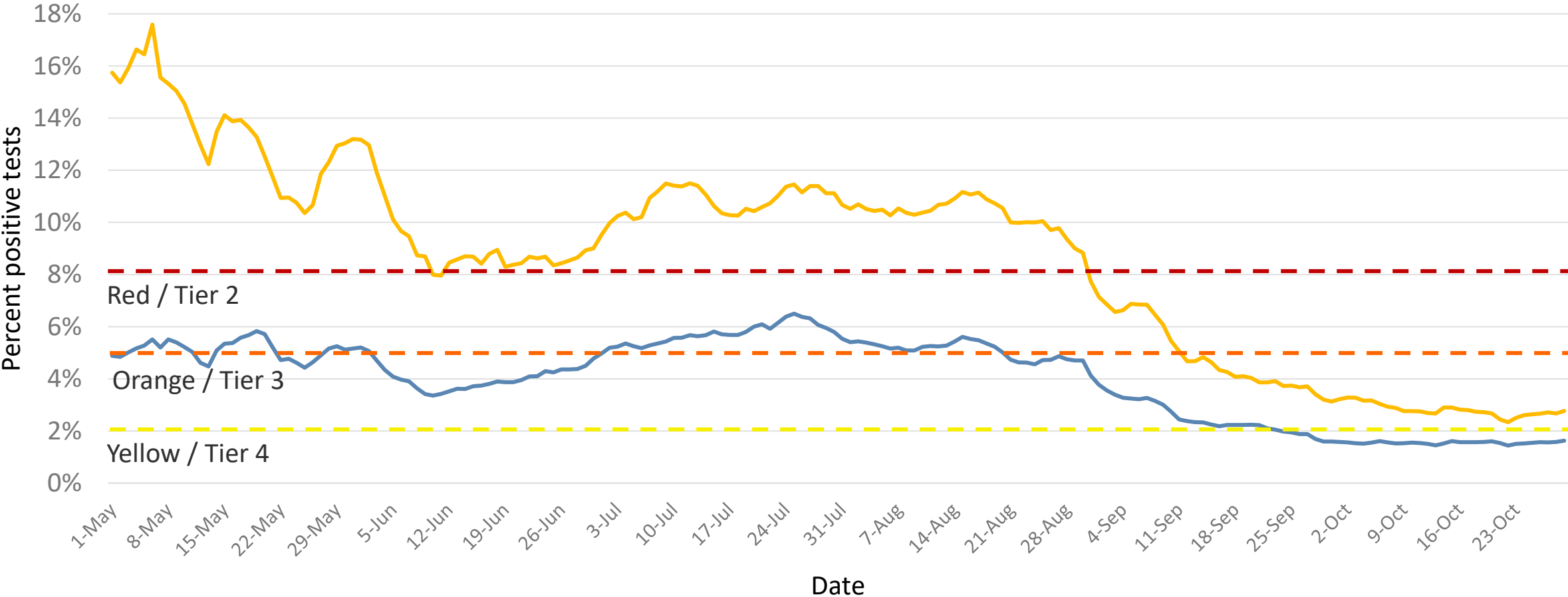
# Alameda County test rates per 100,000 residents, 7-day rolling average, 2020



**NOTE:** Approximately 54% of tests have Unknown or Other race/ethnicity, therefore test rates by race/ethnicity are underestimated.

Includes City of Berkeley  
Source: CalREDIE downloads November 6, 2020 10:45 am

# Alameda County COVID-19 Test Positivity, 2020

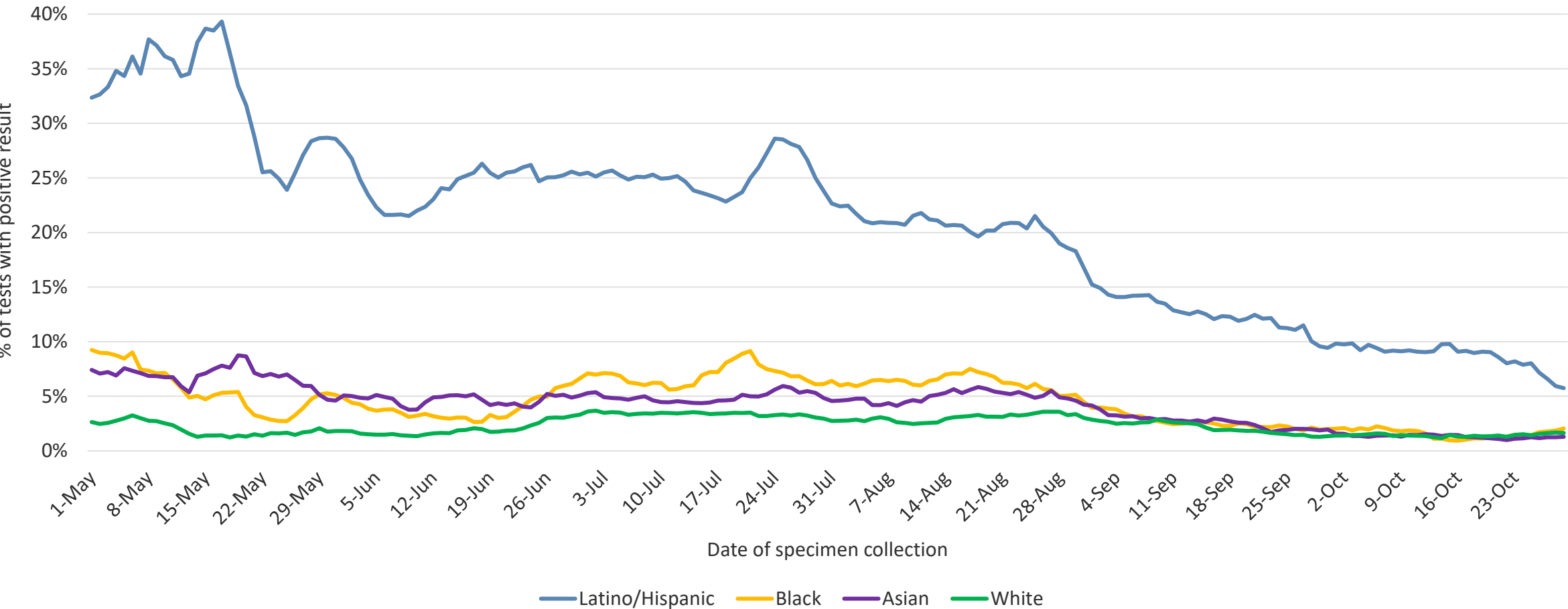


— % positive tests, 7-day rolling average, by specimen collection date    — % positive tests in HPI 1, 7-day rolling average, by specimen collection date

Includes City of Berkeley

Sources: 1) CalREDIE Data Distribution Portal download November 6, 2020 10:45 am. 2) Avellino master spreadsheet.

# Alameda County percent of tests with positive result, 7-day rolling average, 2020

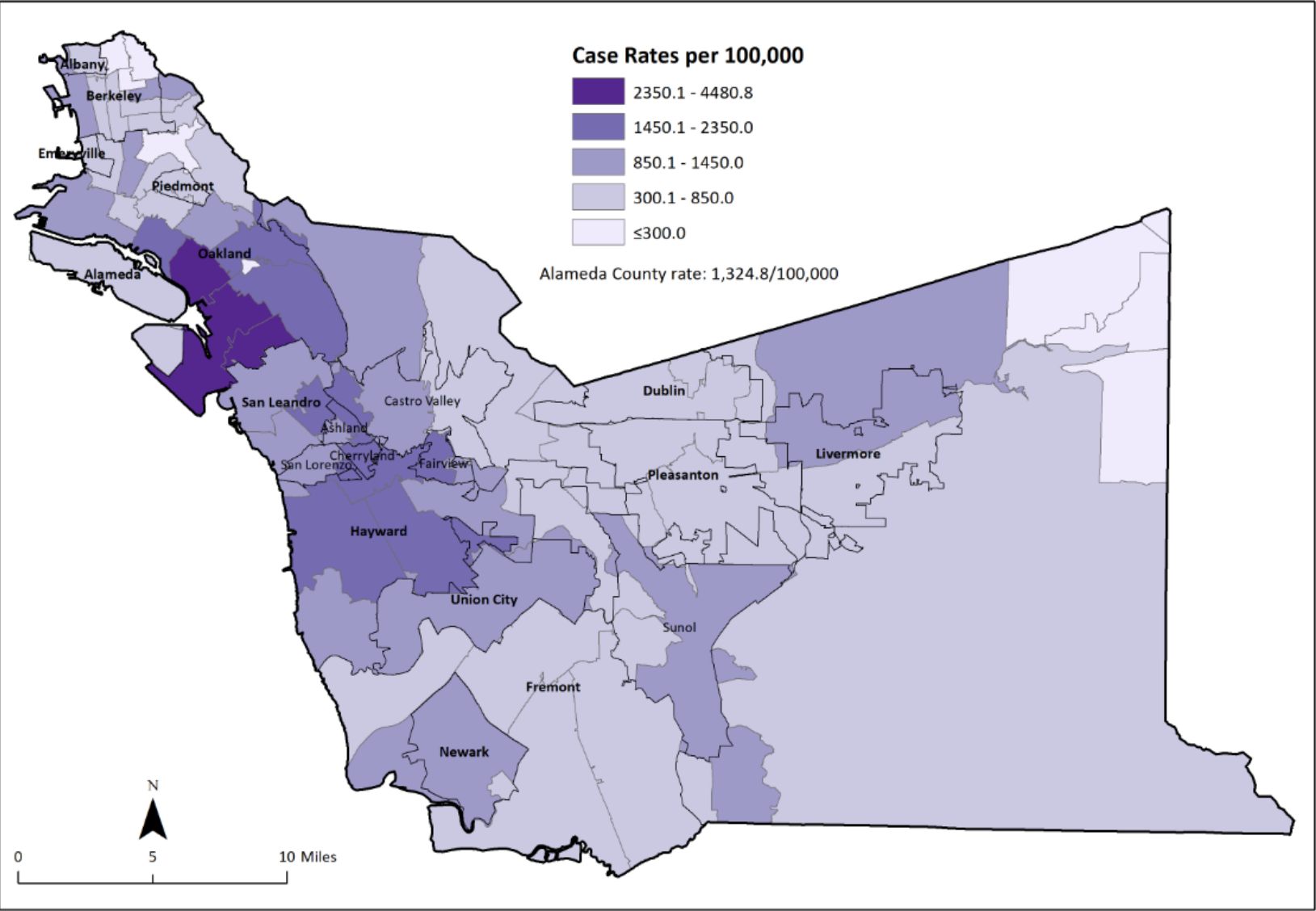


**NOTE:** Approximately 54% of tests have Unknown or Other race/ethnicity, therefore percent positive by race/ethnicity is overestimated.

Includes City of Berkeley  
Source: CalREDIE downloads November 6, 2020 10:45 am



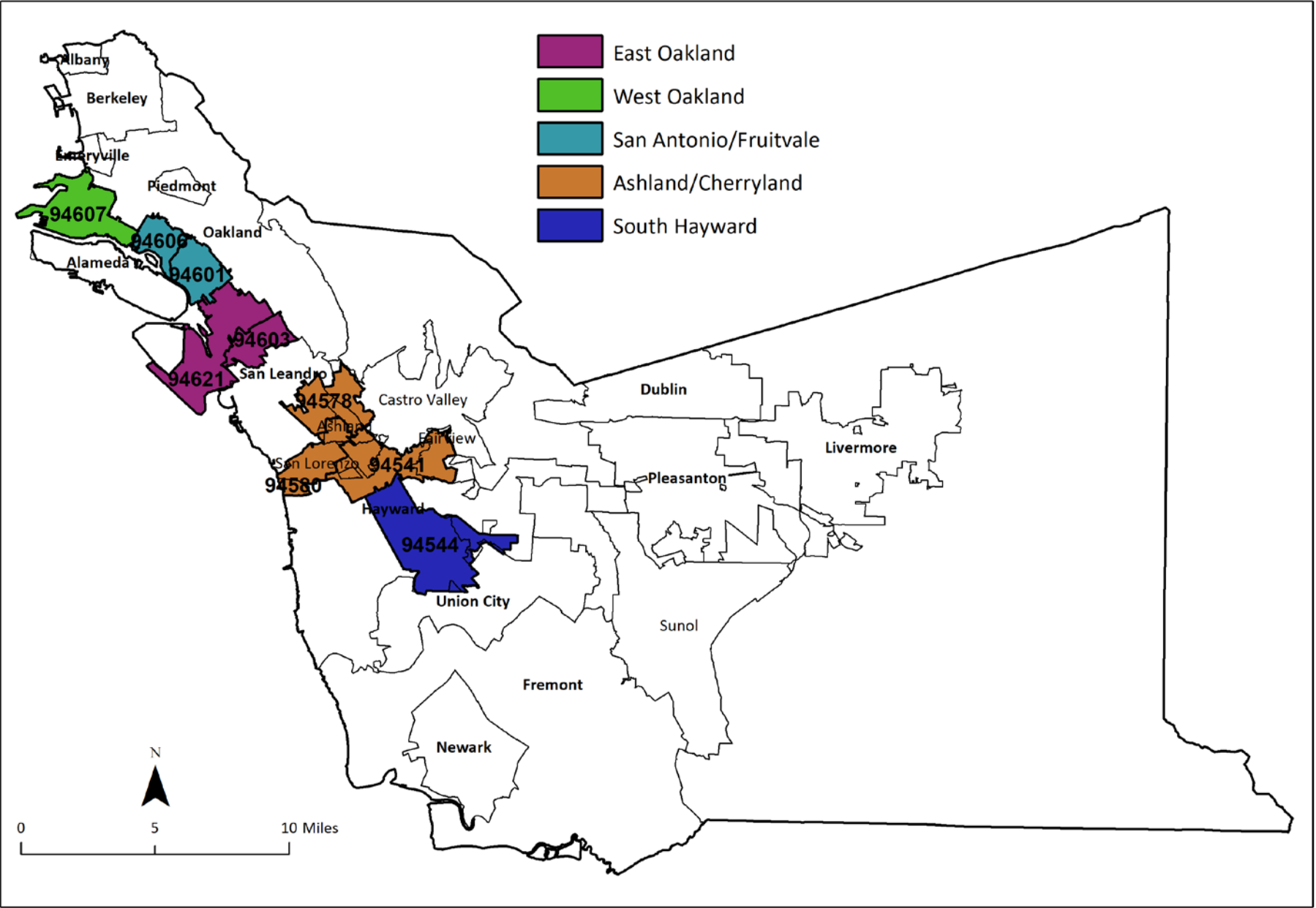
# Overall COVID-19 Case Rate



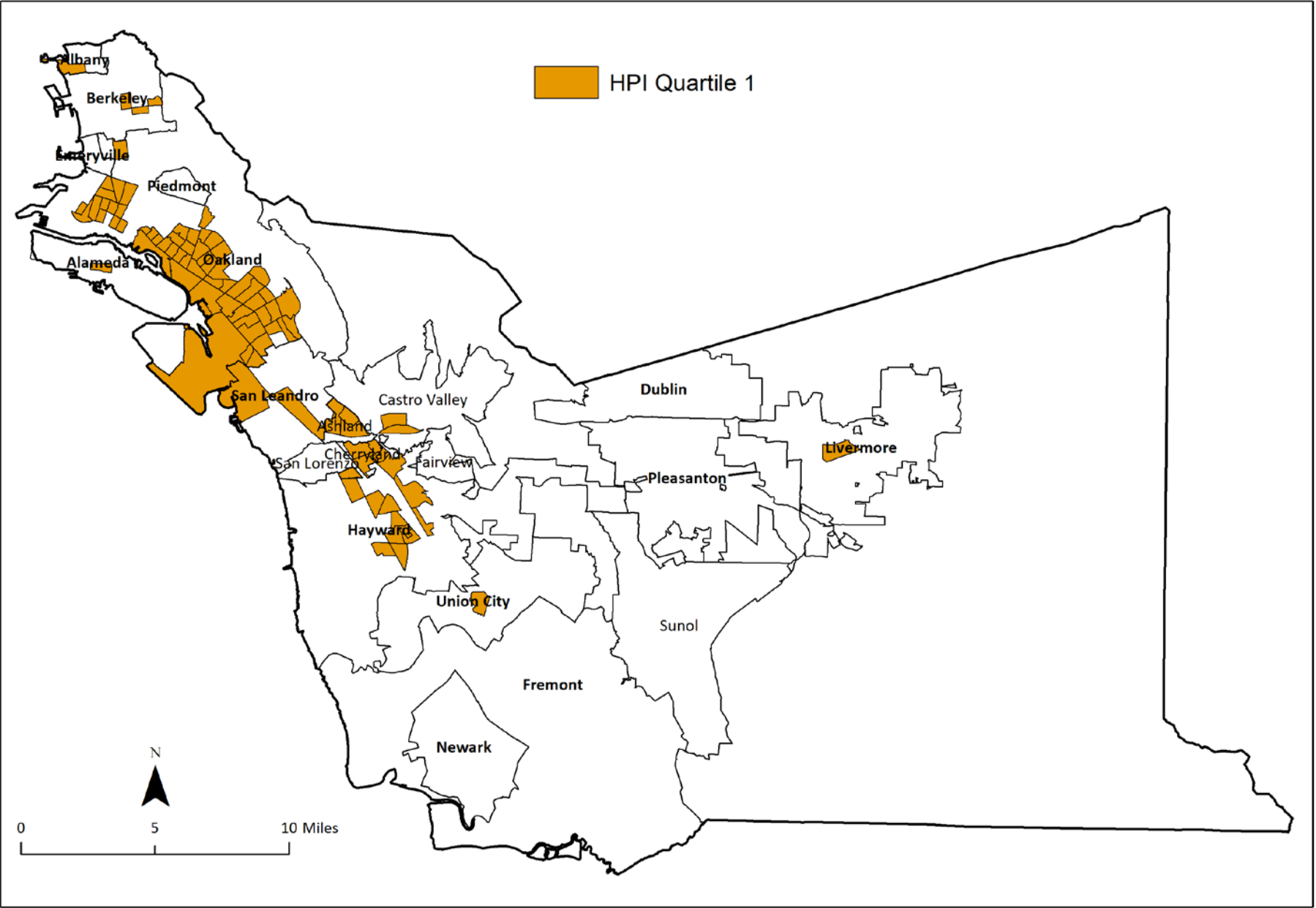
Source: CAPE, with data from CalREDIE 2020-10-07.



# Five Neighborhoods

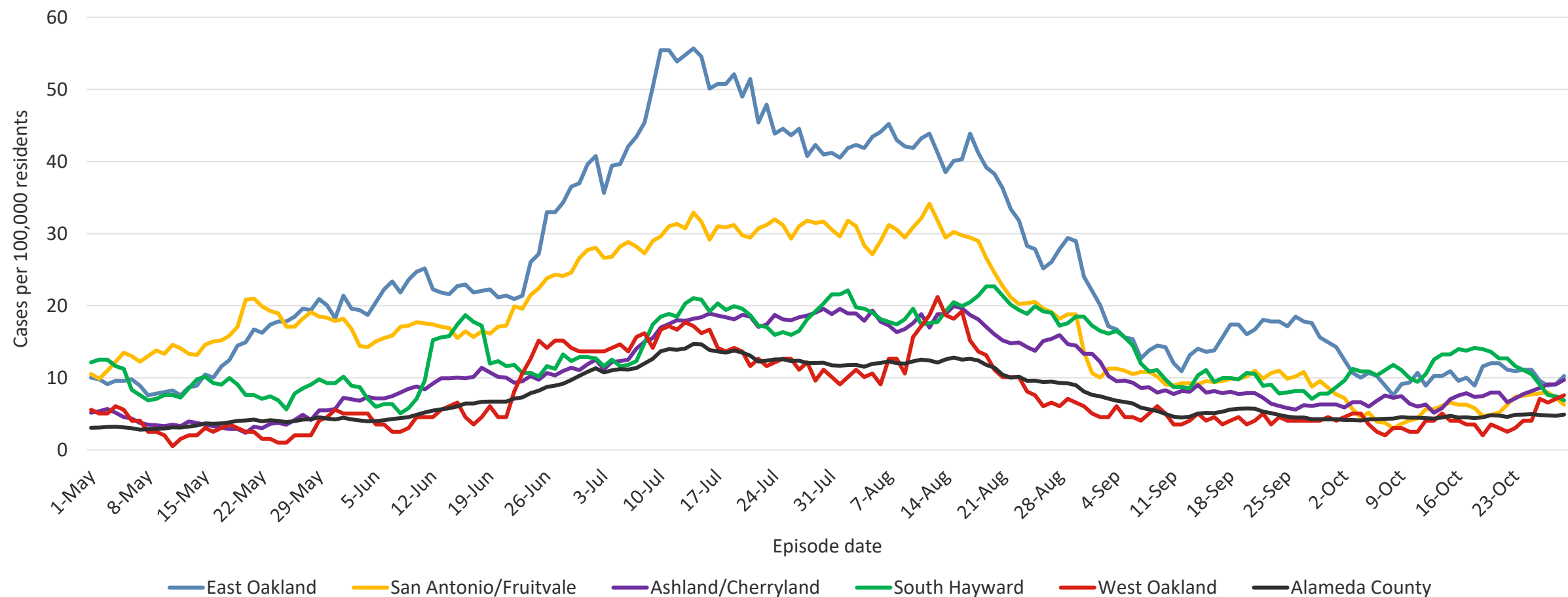


# HPI Quartile 1



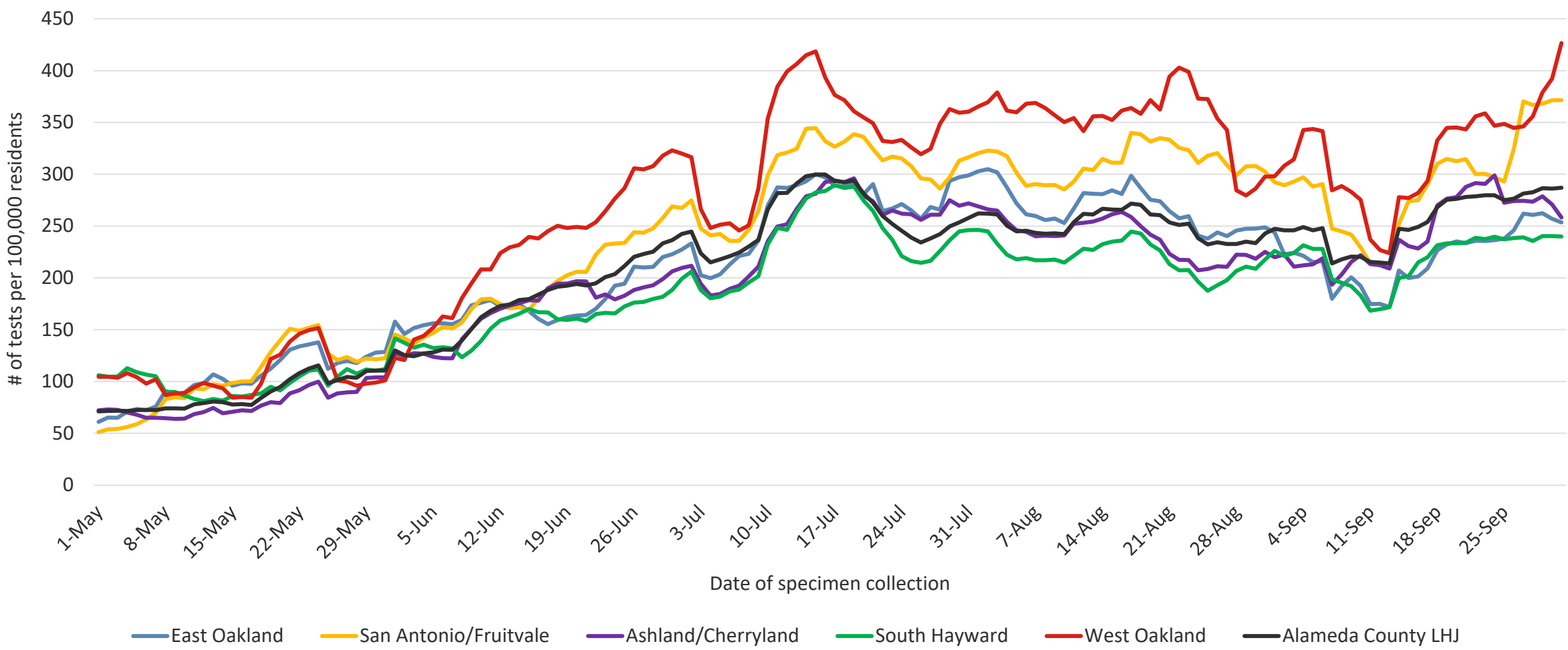
Source: CAPE, with data from CDPH.

# Alameda County COVID-19 daily case rates, 7-day rolling average, 2020



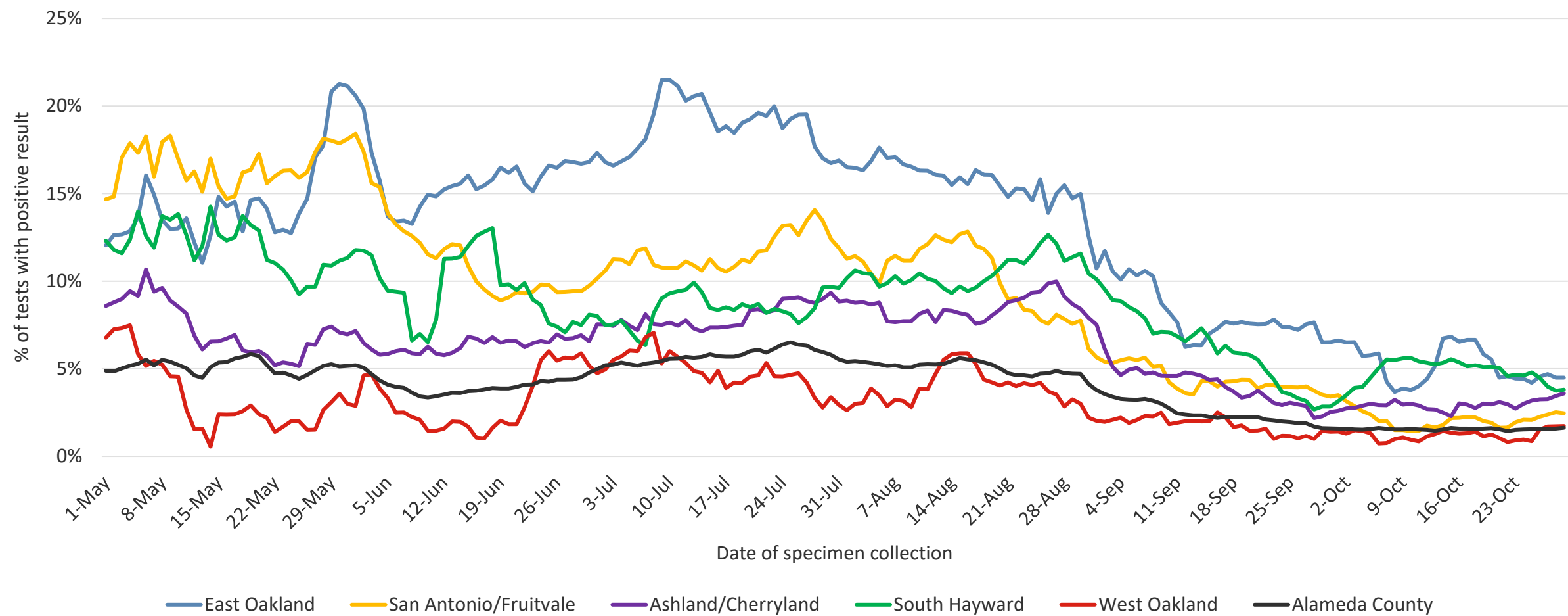
Alameda County includes City of Berkeley.  
Source: CalREDIE download November 6, 2020 10:45 am.

# Alameda County LHJ test rates per 100,000 residents, 7-day rolling average, 2020



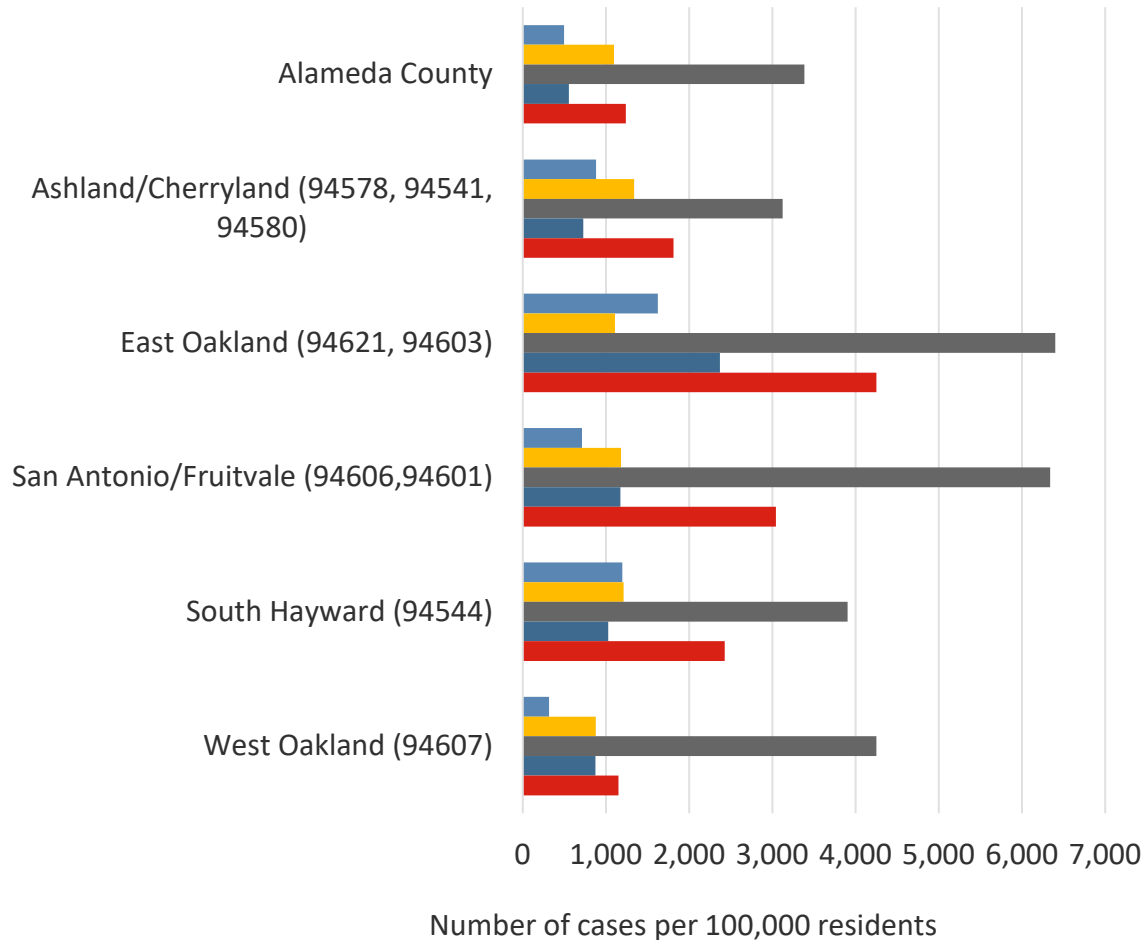
Source: CalREDIE downloads October 9, 2020 10:00 am

# Alameda County percent of tests with positive result, 7-day rolling average, 2020



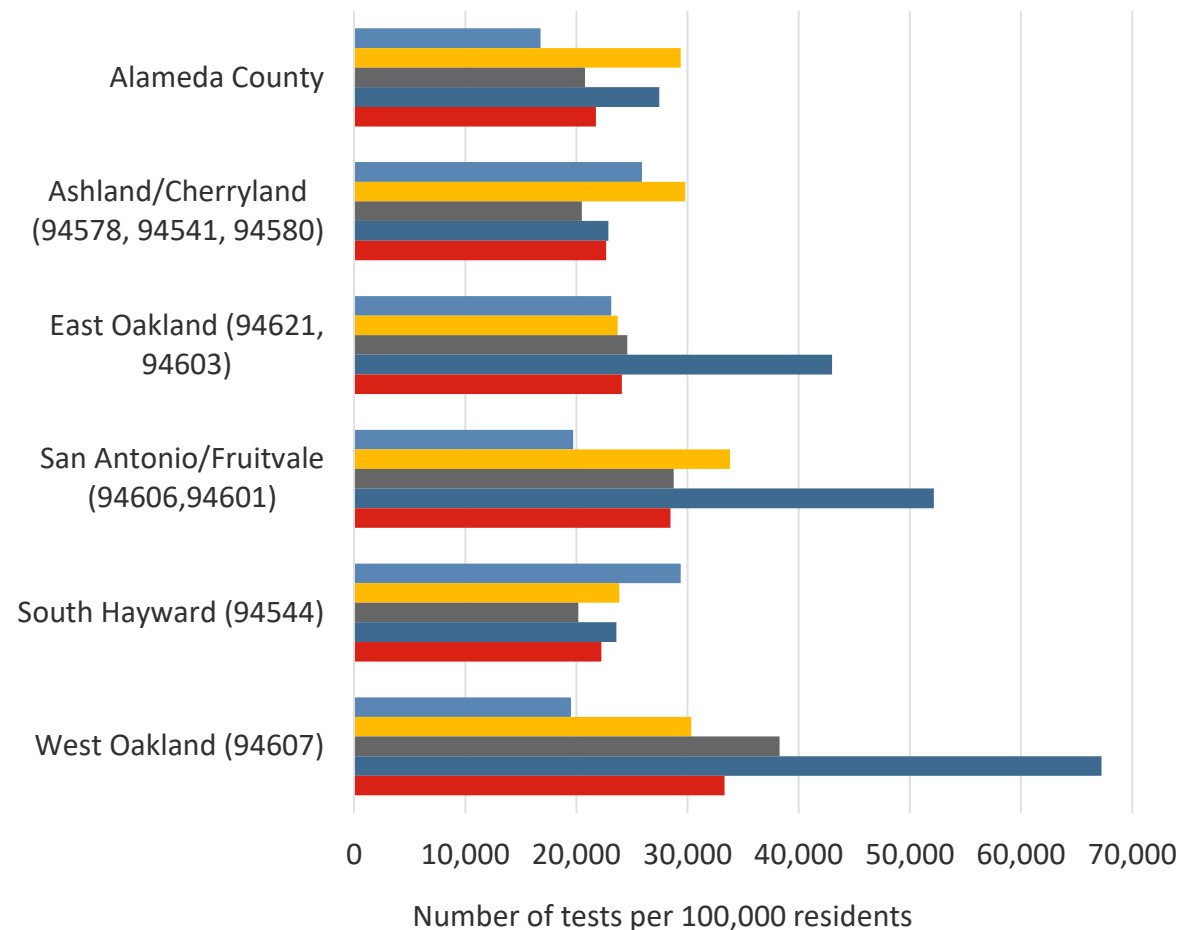
Alameda County includes City of Berkeley.  
Source: CalREDIE downloads November 6, 2020 10:45 am.

### Alameda County COVID-19 case rates



■ Asian ■ Black ■ Latino/Hispanic ■ White ■ Overall (with known R/E)

### Alameda County COVID-19 test rates



■ Asian ■ Black ■ Latino/Hispanic ■ White ■ Overall (with known R/E)

**NOTE:** Approximately 45% of tests in these neighborhoods (54% in AC overall) have Unknown or Other race/ethnicity, therefore test rates by race/ethnicity are underestimated.

# Alameda County's Tier Status

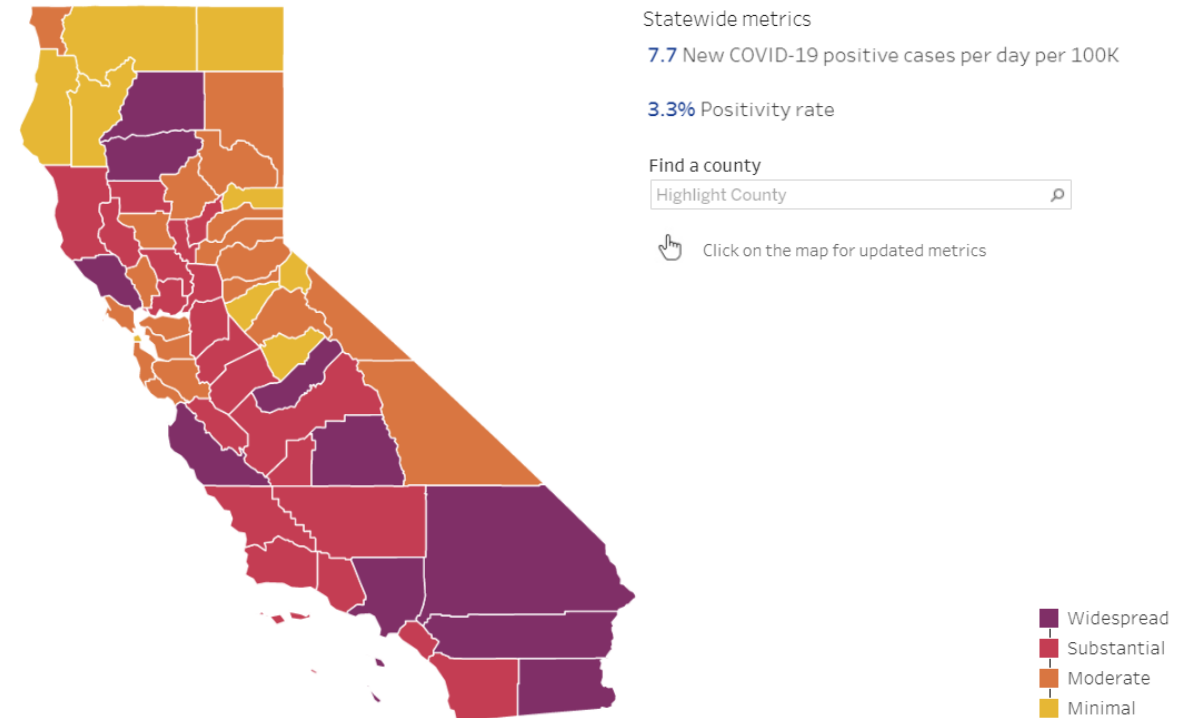


# Alameda County in the Orange Tier

- As of November 4, **Alameda County remains in the Orange Tier**, indicating moderate risk
- **Metrics for tier movement**
  - New cases
  - Rate of positive tests
  - Rate of positive tests in lowest socioeconomic census tracts

## Current tier assignments as of November 4, 2020

All data and tier assignments are updated weekly every Tuesday (*due to Election Day, the Tuesday, November 3 update has been moved to Wednesday, November 4*).



# Alameda County Tier Status, November 4, 2020

<b>Current Tier Status</b>	<b>Orange</b>
----------------------------	---------------

	Tier 1 (Widespread)	Tier 2 (Substantial)	Tier 3 (Moderate)	Tier 4 (Minimal)	<b>Alameda County (11/04/20)</b>
Adjusted Case Rate per 100,000	>7	4 to 7	1 to 3.9	<1	<b>3.2</b>
Overall Test Positivity Rate	>8%	5% to 8%	2% to 4.9%	<2%	<b>1.5%</b>
Health Equity Metric: Test Positivity Rate in Healthy Places Index Quartile 1	>8.0%	≤8.0%	<5.2%	<2.2%	<b>2.6%</b>

# Reopening Plan

# Alameda County Shelter in Place Order

- We have a **phased reopening plan** that balances increased risk of spread of COVID-19 from permitted activities with appropriate mitigation strategies
- However, recent data indicates increasing case rates and hospitalizations
- State Blueprint Tier status changes lag changes in data by several weeks
- Resumption of any activity restrictions will generally be guided by state Tier framework, but may need to happen on faster timeline
- A complete [list of activities permitted in Alameda County](#) is available on our COVID website



# Alameda County Reopening Plan Updates

[complete list of activities permitted in Alameda County](#) available on website

Reopening Date	Sectors & Activities
10/9/20	<ul style="list-style-type: none"><li>Hotels &amp; lodging for tourism: fitness centers and indoor pools restricted</li><li>Museums, zoos, &amp; aquariums: indoors &lt; 25% capacity</li><li>Personal care services: indoors with modification; services requiring removal of face covering prohibited</li><li>Libraries &lt; 25% capacity</li><li>Gyms and fitness centers: indoors &lt; 10% capacity; restrictions on aerobic exercise and classes</li><li>Outdoor film production per local guidance</li></ul>
10/13/20 11/9/20	<ul style="list-style-type: none"><li>Elementary Schools: may open per State and Local guidance, as ready</li><li><b>Middle and high schools</b> may open per State and Local guidance, as ready</li></ul>
10/16/20	<ul style="list-style-type: none"><li>Outdoor cardrooms and satellite wagering</li><li>Playgrounds</li></ul>
10/23/20	<ul style="list-style-type: none"><li>Indoor retail expansion to 50% capacity</li><li>Shopping centers expansion to 50% capacity, limited food courts</li><li>Indoor worship services at 25% capacity or &lt;100 people</li><li>Indoor dining &lt; 25% capacity or &lt;100 people</li><li>Indoor movie theaters &lt; 25% capacity or &lt;100 people</li><li>Indoor family entertainment (climbing walls and bowling alleys)</li><li>Gyms and fitness centers: indoors &lt;25% capacity</li></ul>
4-6 weeks as data trends permit	<ul style="list-style-type: none"><li>Orange tier activities</li></ul>



# Flu Vaccination Order

# Alameda County-Berkeley Healthcare Facility Flu Vaccination Order

- Since 2013 the AC and COB Health Officers ordered healthcare facilities to implement seasonal flu vaccination programs for healthcare workers (HCWs)
  - HCWs required to be vaccinated or could opt to wear a mask in patient care areas
  - In 2019-20 season, facility HCW flu vaccination rates were 87-89%
- HCWs are required to mask this season for COVID-19
- To avoid a decrease in flu vaccinations among healthcare facility staff, we removed the mask option from 2020-21 facilities flu vaccination program order
  - HCWs may have medical exemptions
- Similar orders have been implemented in other jurisdictions
- Flu vaccination for HCWs protects patients and preserves staffing; these will be critical to public health during the COVID-19 pandemic



JOINT HEALTH OFFICER ORDER NO. 20-16

**ORDER OF THE HEALTH OFFICERS OF THE COUNTY OF ALAMEDA AND THE  
CITY OF BERKELEY MANDATING THAT ALL HEALTH CARE WORKERS  
WORKING IN THE COUNTY OF ALAMEDA AND THE CITY OF BERKELEY  
OBTAIN ANNUAL INFLUENZA VACCINATIONS FOR EVERY INFLUENZA  
SEASON**

Date of Order: November 2, 2020

Please read this Order carefully. Violation of or failure to comply with this Order is a misdemeanor punishable by fine, imprisonment, or both. (California Health and Safety Code § 120295, et seq.; Cal. Penal Code §§ 69, 148(a)(1))

UNDER THE AUTHORITY OF CALIFORNIA HEALTH AND SAFETY CODE SECTIONS 101040, 101085, 101475, AND 120175, THE HEALTH OFFICERS OF THE COUNTY OF ALAMEDA AND THE CITY OF BERKELEY (“HEALTH OFFICERS”) ORDER:

1. All licensed health care facilities, residential care facilities, and locked psychiatric facilities in Alameda County and the City of Berkeley must implement a program requiring their Health Care Workers (HCWs) to receive an influenza vaccine for each influenza season. The Influenza Season dates are defined as November 1 to April 30 of





# Questions



Alameda County  
Health Care Services Agency



Alameda County Public Health Department  
Celebrating Healthy People in Healthy Communities