

## COVID-19 UPDATE

# What is contact tracing?

Testing and tracing help prevent the spread of infectious diseases like COVID-19



Testing and tracing are completely private! You will not be asked for your social security number or your immigration status.

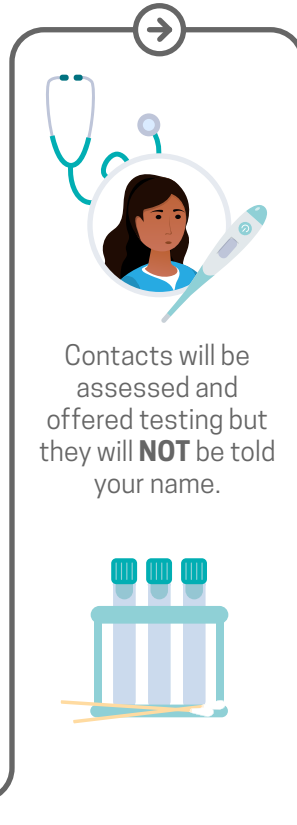


The Public Health Department and its community partners will contact people who test positive for COVID-19.

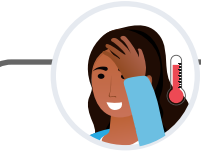
Answering the phone can save lives.



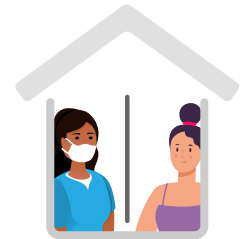
We “trace” or find others who have been in recent close contact with them.



Contacts are asked to quarantine themselves even if they are not showing symptoms.



If they are showing symptoms or have already tested positive they are asked to isolate themselves to prevent the spread of COVID to others.



## Stay Informed

Please click to view, “How COVID-19 Can Spread in the Community.”

Call 2-1-1 or text “COVID19” or “coronavirus” to 211211 to receive general information.

Check Public Health Department’s website: [www.acphd.org](http://www.acphd.org)

🐦 Subscribe to our social media



Alameda County  
Health Care Services Agency



Alameda County Public Health Department  
Celebrating Healthy People in Healthy Communities