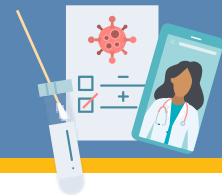


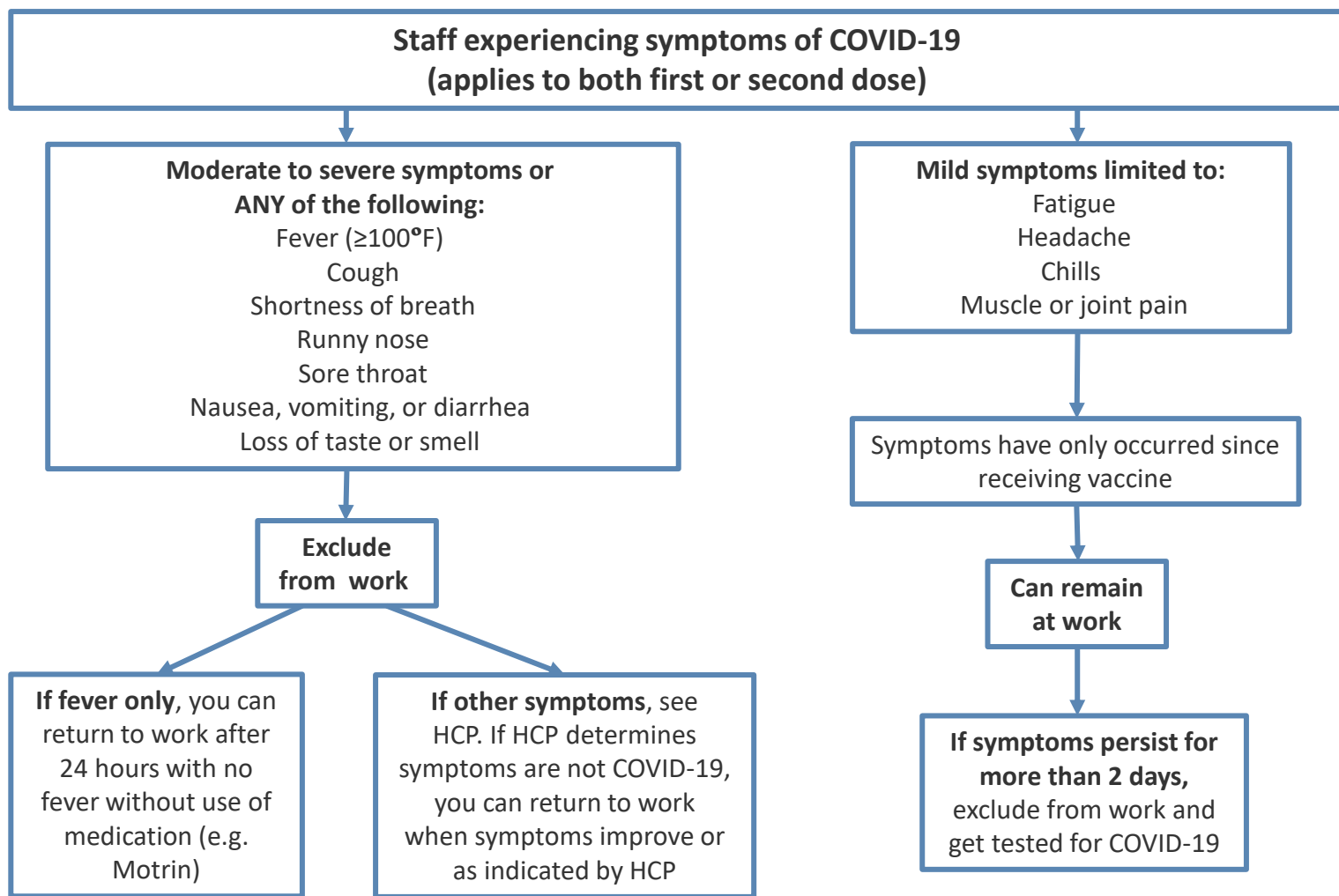
Post Vaccine Symptoms Guidance

What to do if you are feeling symptoms after your vaccine



This guidance is for symptomatic school/child care staff who have received a **COVID-19 vaccine in the prior 5 days** (Day 1 is day of vaccination) and have **NOT** had a close contact with a COVID-19+ person during the previous 14 days. Staff who are symptomatic post-vaccine and are **within 14 days of a close contact** should be excluded from work and evaluated by a health care provider (HCP) for SARS-CoV-2 infection.

Staff with symptoms of COVID-19 that begin on or after day 6 post-vaccination (1st OR 2nd dose) should be excluded from work and evaluated by a health care provider for SARS-CoV-2 infection.



Vaccinated staff should continue to be tested as part of routine screening. However, if resources are strained (i.e. not enough testing kits), unvaccinated personnel should be prioritized for testing.



**ALAMEDA COUNTY HEALTH CARE SERVICES AGENCY
PUBLIC HEALTH DEPARTMENT**

Colleen Chawla – Agency Director
Kimi Watkins-Tartt – Director
Nicholas Moss, MD – Health Officer

Contact
Public Health Department:
(510) 267-8000 Main Line
COVID-19 Information:
(510) 268-2101

www.acphd.org

Ver: 3/10/21